

Established 1900

— **GOLDINGS** —

Chartered Surveyors, Auctioneers & Valuers



AUCTION SALE

OF

Antiques



CONDITIONS OF SALE

1. The highest bidder shall be the buyer. The Auctioneers reserve the right of regulating the biddings; of rejecting any bid; and of bidding for, withdrawing, consolidating, dividing or altering the order of lots.
2. The purchase money for each lot with the usual commission of 10% plus VAT at the current rate shall be paid at the fall of the hammer (if required). Each lot at the fall of the hammer shall be at the sole risk and expense of the buyer, and shall be paid for and removed immediately after the conclusion of the sale, *but no lot shall become the property of the buyer, or be removable until paid for*, and if taken away in contravention of these conditions without an order for removal signed by the Auctioneers, they shall have power to seize the same by their servants or agents, or otherwise, or the Auctioneers may recover either the lot sold or the price thereof (at their option) by action at law.
3. No contra account of any description whatever will be allowed to the buyer as a set off, and payment for each Lot shall be made to the Auctioneers or their clerk only, and a buyer paying by cheque must give satisfactory references (if required).
4. For all purposes of this sale the Clerk of the Auctioneers shall be deemed to be the agent of both seller and buyer.
5. A bidder shall not be allowed to retract his bidding after the fall of the hammer, and he shall give up his full name and address if required. The Auctioneers will not recognise the transfer of any lot from one buyer to another, nor make any alteration in the sale book in respect thereof.
6. The Auctioneers are acting only as agents, and give no personal warranty as to the condition, quality or authenticity of any chattels offered for Auction. Any catalogue description is given merely as guide to purchasers, any description can be changed from the rostrum before the lot is sold. If a purchaser buys without previous inspection he will do so at his own risk.
7. Notwithstanding any other terms in these Conditions, if within 7 days of the sale a purchaser gives notice in writing that a lot is a deliberate forgery, with supporting factual evidence, the Auctioneers may rescind the transaction. The burden of factual proof lies with purchaser, mere opinions will not satisfy. This benefit is not assignable.
8. If any buyer neglect or refuse to comply with the above conditions or any of them, his deposit money (if any) shall be forfeited, and the lot uncleared may, at the option of the Auctioneers, be resold without notice by public auction or private contract, and any loss occasioned by such re-sale together with all expenses attendant thereon, or arising under these conditions shall be paid for by the defaulter at this sale and be recoverable as and for liquidated damages. This condition is however without prejudice to the right of the Auctioneers to enforce the contract made at this sale if they think fit.
9. Any Notes for Purchasers and catalogue Glossaries, where used, will be construed as Conditions of Sale.
10. The Auctioneers shall be the sole Arbitrators in all matters of dispute relating to these conditions both as between the seller and the buyer and between the several bidders and buyers and their determination on all matters shall be final and binding on all parties concerned.

Auctioneers: C. Robin Hall FRICS FAAV & Colin R. Young ANAVA

Upon instructions from the Executors of Mr R Hall (Dec'd),
Mrs F A Meads (Dec'd), and others.

Messrs

GOLDINGS

will sell by Auction selected pieces of

ANTIQUE & LATER

**FURNITURE, ORIENTAL RUGS & CARPETS
SILVER, GLASS, CERAMICS,
JEWELLERY & COLLECTORS ITEMS**

on Wednesday 25th November, 1992

Commencing 10am at

Grantham's Auction Rooms,
Old Wharf Road, Grantham, Lincolnshire, NG31 7AA
Telephone: (0476) 65118 Fax: (0476) 590998

Viewing Times:

Sunday 22nd November:	2pm to 5pm
Tuesday 24th November:	2pm to 7pm
Saleday:	9am to 10am

IMPORTANT NOTES FOR PURCHASERS

1. **PAYMENT:** Must be made in full immediately after the Auction. The following methods of payment are acceptable.
a) Cash b) Bankers Draft c) Building Society Cheque
d) Cheques, accompanied by a valid card. For accounts above the stated card limit, we reserve the right to retain the goods until clearance is established.
2. **BUYERS PREMIUM:** of 10% + VAT is payable on all lots.
3. **REMOVAL OF PURCHASES:** Goods must be collected as soon as they are paid for, and in the Two Working Days following the sale. If goods are not collected on these days we reserve the right to charge £1 per lot per day thereafter.
4. **COMMISSION BIDS:** If you are unable to attend this or any of our future sales we will be pleased to bid on your behalf. We always purchase at the lowest possible price, subject to other bids and reserves.

All bids must be handed to the office on an official form. It remains the responsibility of prospective purchasers to contact GOLDINGS to confirm whether their bids have been successful.
5. **SMOKING:** is not permitted in any part of the Saleroom.
6. **REFRESHMENTS:** will be available Saleday.
7. **ACCOUNT TRANSFERS:** will not be recognised after the sale. If any lots are purchased for another person, this must be declared at the fall of the hammer.

GLOSSARY

- a) Generally: 'As Found.' This term indicates the lot has some damage. Its absence does not indicate that the lot is free of defect. All lots are SOLD AS SEEN.
- b) Paintings: 'Signed, initialled, monogrammed.' In our opinion a work by that artist. If the prefix *bears* appears, this refers to the present state of the work.
- c) Books and printed matter: These items are not sold subject to collation and are not returnable once removed from the premises.
- d) Jewellery: Weights given are approximations given by basic instruments.
- e) Estimates: For intending purchasers we include in this catalogue the Auctioneers opinion of value. If no value is given the value is less than £20.



Lots 405, 462, 466.

COLLECTORS ITEMS

1. A Victorian PERAMBULATOR. £30-50
2. A small selection of handmade and other Garden Tools.
3. A Victorian POKER STAND with a brass bullet-shape sleeve, supported on an iron S-scroll and circular terraced base. £30-40
4. The Willcox & Gibbs "Automatic" SILENT SEWING MACHINE, with instruction book. £60-90
5. An Anglo-Indian ivory inlaid Trinket Box (AF), barleytwist candlesticks, etc.
6. Ladies Gloves.
7. A light brown LEATHER TRAVEL CASE fitted with electroplate lidded jars. £40-60
8. Grantham and Sleaford stoneware Kegs and a storage jar.
9. A stripped pine Pelmet.
10. A Wm IV Nightwatchman's TRUNCHEON, painted green with W.R.Z.4. in yellow. 92cm (36"). £30-40
11. Two wooden Fruit Bowls.
12. An oak and chromium two handle Tray.
13. A leopardskin Ladies half length Jacket.
14. An old tinsplate Rocking Horse.
15. An oak and electroplate Biscuit Barrel.
16. An embossed brass Coal Box. £20-30
17. A Pathescope Princess mini-projector and Kodak 'Brownie' Flash 8 bakelite and tan box camera.
19. Old Fish Weighing Scales.
20. Red velvet Curtains, etc.
21. Lace pieces from a four poster bed.

22. A Dolls House and contents.
23. A canvas Trunk, with ladies hats, etc.
24. Table Skittles, Building Blocks and games.
25. A baby Rocking Horse.
26. Rinso powder, bridle, Art Deco crumb brush, etc.
27. Avery Scales, Weights, three cast iron rosettes and a fire dog.
28. A set of cast iron SCALES with brass scoop and tray, by Herbert & Son,
Kings Cross. £30-50
29. Old Walking Sticks.
30. A Victorian brass rectangular Log Box. £25-40
31. A Singer Sewing Machine.
32. An 18thC oak Wall Bracket.
33. A bamboo Wall Bracket.
34. A Victorian cast metal 'rise and fall' Light Fitting. £25-40
35. A Victorian pine Cash Till.
36. Brass scbop, biscuit barrel, old weights, etc.
37. A needlework silk Muff (AF), old Newspapers, etc.
38. A Hornby 'O' gauge clockwork MO Passenger Trainset. £20-30
39. 78rpm Records.
40. A Victorian brass Hanging Trivet.
41. A gilt framed Porthole Mirror. £20-30
42. A Victorian slate Sundial. £25-40
43. Oil Lamp Bases and two glass Shades.
44. A Bush bakelite Radio.
45. Tin-plate toys; two vans, car, crane and mobo tortoise. (AF)
46. A T Hansell's Patent Cradle together with a boudoir doll and other soft

COLLECTORS ITEMS

47. A Victorian Oil Lamp with cast iron base. £40-60
48. A pair of Victorian spelter Marley Horses (AF).
49. A Damask Tablecloth, 220cm x 310cm (87" x 122").
50. A Damask Tablecloth, 220cm x 310cm (87" x 122").
51. A Damask Tablecloth, 220cm x 354cm (87" x 139").
52. Two Growling Teddy Bears and 3 other toys (AF). £30-50
53. A Romany Horse Nose Band. £20-30
54. A pair of 19thC Germanic cast metal Ewers 17" high. £30-40
55. A pair of Victorian spelter Figures. £20-30
56. A Burmese brass Table Gong of oval form suspended by two horns with silver plated mounts, on an oak plinth with striker. 40cm (16") high. £40-60
57. A Davis Kirkby MINER LAMP. £30-50
58. A plush TEDDYBEAR, straw filled and jointed. 46cm (18") high. £60-90
59. A plush TEDDYBEAR, straw filled and jointed. 53cm (21") high. £30-50
60. An English porcelain head Doll marked HL with an 8 in a lozenge, straw body and wax limbs. 24cm (9.1/23") high. £20-30
61. A late 19th C Gothic oak Bookrest.
62. A cellulose ladies Nightbag and two Compacts.
63. A Victorian rosewood Writing Slope. £30-50
64. A Victorian tabletop BUTTER CHURN with metal plaque of R A Lister & Co Ltd., Dursley, England. £40-60
65. A model bed with an English porcelain headed Doll. £30-40
66. A George III needlework SAMPLER worked with a pagoda over three verses, floral and animal motifs and inscribed 'Alethea Hewerdine aged 15 Years December 11th 1816 Woolsthorpe'. Mounted in a maple frame. 36cm x 30cm (14" x 12"). Some wear. £250-350
(See illustration on front cover.)
67. A needlework Sampler, Sarah Clarke 1883 age 11, in a modern frame. £25-35
68. A carved giltwood figure of a Buddha, 6'6" tall. £800-1200

69. A side-by-side SHOTGUN with one rifled, 12 bore damask barrel, inscribed
'Made in England for W Rawbone, Cape Town. Serial No. 27683.
The purchaser of this lot must have a current and valid Permit.
70. A Gent's leather Toiletries Case fitted with bakelite.
71. Doll and Linen.
81. Whisky Miniatures and Keyrings.
82. A Victorian turned bone Desktop Seal. £20-30
83. A 19th C tortoiseshell Card Case. £30-50
84. A leather handbag, silver rattle, lead animals, etc.
85. A four piece ivory Manicure/Pedicure Set, in a satin lined case.
86. A Chinese blue and white porcelain Snuff Bottle.
87. A Waterman's Fountain Pen.
88. A pair of ivory Napkin Rings.
89. A Chinese Opium Pipe and two further pieces.
90. Four porcelain Half Dolls. £25-40
91. A set of five Brass Weights. £20-30
92. A 19th C mother of pearl parquet Card Case. £30-50.
93. A cased set of c.150 modern Lead Soldiers. £80-100
94. A collection of ten POCKET INKPOTS including an Excise Officers brass
example in the form of a barrel. £100-150
95. to 100. Spare Lots.
101. A pair of Victorian blue glass LUSTRES (AF). £60-90
102. A modern German Temple Jar.
103. A milk glass Baluster Vase decorated with a butterfly and peacock amidst
foliage 35cm (14") high. £25-40
104. A pair of SATSUMA VASES of ovoid form having reeded and flared neck,
applied scroll handles, two figures in each front and back panels,
richly encrusted with dark enamels, Meiji period. 30cm (12") high
£120-180

105. A modern Imari style Baluster Vase.
106. A Mesopotamian style earthenware Vase.
107. Eight pieces of Sylvac Type pottery and two glass vases.
108. A SATSUMA earthenware BALUSTER VASE decorated with sunflowers and butterflies, late Meiji period. 64cm (25") high. £80-120
109. A sylvan Jasper Baluster Vase, 28cm (11") high.
110. A cut crystal Vase, 22cm (9") high.
111. Poole pottery Hors deuvre dish, cheese dish, etc.
112. A cut crystal Vase, 15cm (6") high.
113. A Crown Devon silver lustre 3 piece Teaset.
114. A cut crystal Dish, 30cm (12") dia.
115. A pair of peony design blue and white Tureens.
116. A Fieldings Crown Devon pedestal Fruitbowl 23cm (9") dia. £25-40
117. A modern Chinese Umbrella Stand.
118. A Royal Doulton Beaker commemorating the 1902 Coronation.
119. A Victorian Staffordshire Teapot. £20-30
120. Three modern Chinese Figures. £20-30
121. A modern Cantonese Fruit Bowl.
122. Whisky Decanter, willow pattern Tureen, etc.
123. A pair of Victorian etched ruby glass Vases and a Venetian style amethyst glass Decanter. £15-25
124. Six Royal Albert 'Gossamer' Cups and Saucers.
125. Two Carlton and one Beswick Leaf Dishes.
126. Two Wall Pockets and plate.
127. Mason's ironstone Plates (AF) and other blue and white china.
128. A 19thC Copeland oval Basket painted with flora. (AF). £25-40

129. Four Udder Vases, two Aller Vale and two Watcombe. £30-40
130. Six pieces of Torquayware.
131. A two handled polychrome Bowl, marked Henriot Quimper, France 113. £20-30
132. A Royal Worcester Sugar Bowl of circular form with flared rim the border decoration being rosebuds around a gilt blue frieze. Year cypher 1903. £20-30
133. A 19th C Samson figure of a Dandy Gentleman (AF) 17cm (6.3/4") high. £25-40
134. A Victorian Harvest Jug and two stoneware storage jars.
135. A blue and white Part Dinner Service.
136. A Jasperware Teapot, impressed mark to base Wedgwood England. Some restoration. £20
137. A white pottery Ewer with figures and palm trees in relief, date lozenge of 1852. Maker T.J. & J. Mayer, Longport. 24cm (9.1/2") high. £25-40
138. A set of six Minton COFFEE CANS AND SAUCERS of white moulded porcelain with gilt scroll handles, c.1900. £25-40
139. A Royal Doulton Indian Tree pattern plate, a Royal Doulton polychrome peony design plate and an Adams flared mug of Chinese Design. £20-30
140. A Victorian cut crystal Pickle Jar and three vine engraved conical beakers. £15-25
141. A Victorian cut and faceted crystal Decanter. 30cm (12") high. £30-40
142. A faceted glass Sweet Jar with an electroplate cover and detachable stand. £20-30
143. A DRESDEN three branch CANDELABRUM in the form of a tree with a boy with horn and squirrel to base and girl on the trunk, c.1880. 24cm (9.1/2") high. £150-250
144. A Kerr & Binns period WORCESTER BOWL in the form of four lotus leaves adjoined by their stems to form the four footed base, opposing leaves bearing a frog and beetle. Bearing both printed and impressed mark to base with year cypher of 1879. £80-120
145. Four DAVENPORT TRIO SETS of cup, saucer and plate. White porcelain with a turquoise frieze, gilt decoration and panel borders enclosing scenes of various small birds, c.1830. £120-180

146. A COALPORT DISH painted with six motifs of pansies, pierced gilt handle and scroll rim with gadrooned moulding. C.1840. 27cm (10.1/2").
£80-120
147. A pair of 19th C flatback STAFFORDSHIRE FIGURES of a lad and lass on horseback with bocage on the oval bases. 19cm (7.1/2") high. £60-80
148. A pair of early 20th C ROYAL DOULTON cylindrical STONEWARE VASES decorated with bands of mottled blue and green, each with four Art Nouveau stylised floral motifs. Impressed circle, lion and crown mark. 18cm (7") high.
£40-60
149. An IMARI BOWL painted with vases amidst foliage. Meiji period. 21.5cm (8.1/2") diameter, 10cm (4") high.
£80-120
150. An IMARI PLATE painted with three panels of foliage enclosing a central medallion. Meiji period. 21cm (8.1/2") diameter.
£20-40
151. An IMARI PLATE painted with six panels of foliage enclosing a central medallion, with a raised edge. Meiji period. 21cm (8.1/2") diameter.
£40-60
152. SPODE 'Indian Tree' stoneware pieces being; seven plates 18cm (7") and two oblong dishes 19cm x 26cm (7.1/2" x 10.1/2"). Black printed mark, c.1810.
£120-180
153. A pair of Prattware VASES transfer printed sporting scenes on a sky blue ground, date lonzenge of 1856. 10cm (4") high.
£40-60
154. A Beswick figure of a small bird.
155. A Victorian Wedgwood blue and white Comport.
156. An early 19thC saltglaze stoneware HUNTING JUG with base metal cover. 19cm (7.1/2") high.
£150-200
157. A 19thC saltglaze stoneware Tankard (AF). £20-30
158. Glass Preserve Jar, two ribbon plates and Great Exhibition Mug (AF).
160. A late 18thC Dutch Delft figure of a bear decorated in underglaze blue. 7cm (3") high.
£40-60

BOOKS AND POSTCARDS

161. STORR'S GRANTHAM POLL BOOK &c., June 1818 to July 1837. Bound in one volume.
£120-180

162. **Edmund TURNOR. COLLECTIONS for the HISTORY OF THE TOWN AND SOKE OF GRANTHAM. Containing memoirs of Sir Isaac Newton 1806. with detachable map, in a library binding. £80-120**
163. Thirteen Boston Postcards
164. Lincolnshire Postcards, principally Grantham area.
165. Six raphael tuck London Postcards.
166. British Empire and other Postcards.
167. An Album of Assorted Postcards.
168. A selection of Sheet Music, hymn books, etc.
169. Two Victorian leatherbound Family Bibles.
170. A Victorian leatherbound Bible, in two volumes.
171. Assorted Victorian Music Books.
172. A Victorian illustrated Family Bible in a gilt and tooled leather binding with brass clasps.
173. 1903 Country Life, two 1914 Vanity Fair and sundry magazine.
174. Hogarth's Works. (AF)
175. Sixteen Dickens Novels.
176. Assorted Books.
177. Assorted Books.
178. Two albums of scraps and postcards.
179. The Compact Encyclopaedia, in six volumes.
180. A display of c.90 early SAUCY POSTCARDS. £25-40
181. to 190 Spare Lots.

VIOLINS

191. A modern Chinese 'Skylark' Violin, cased with bow. £30-40

192. A 19th C VIOLIN, 15", cased with bow. £30-40
193. A 19th C VIOLIN, 13", cased with bow. £30-40
194. A 19th C Violin Double Case with TWO VIOLINS, 14", one bearing label 'Alman'. £60-90
195. A Czechoslovakian Stradivarius Copy VIOLIN, also bears label of the London Violin Company Ltd., Reg. No. BL73410, cased with bow. £30-50
196. to 200. Spare Lots.

CLOCKS & WATCHES

201. A Victorian brass cased MANTEL CLOCK in the form of a classical building, with an 8-day movement. 29cm (11.1/2") high. £80-120
202. An oak Mantel Clock with arch top and barleytwist pillars.
203. A walnut cased Bulle electric Mantel Clock. £20
204. A Victorian rock crystal BULLS-EYE FOB WATCH, white dial having roman numerals, spade hands and a cylinder movement. Engraved 'M&F Jan 16th 1895' on bezel which is of unmarked sterling silver, and mounted on a small trace chain. £150-200
205. A Victorian 18K Gent's POCKETWATCH, the white faced dial having roman numerals and seconds ring, the movement stamped S & Co, enclosed by an engine turned case. Boxed together with three winding keys. £80-120
206. A Ladies Wristwatch with a Swiss 15 jewel movement in a 9 carat gold case and similar strap. £25-35
207. to 210. Spare Lots.

JEWELLERY & BIJOUTERIE

211. A Victorian 9ct rose gold fancy belcher ALBERT CHAIN. 32 grammes (1 oz). £70-90
212. A heavy gold plated Gent's Band set with a single white stone. £20-35
213. A crystal and pearl Necklace together with a Liberty & Co box.
214. A 9 t gold sapphire Flowerhead Ring. £20-30

215. A 9ct gold topaz Ring. £20-30
216. A 22ct gold Wedding Band, 10 grammes. £40-50
217. An 18ct gold and platinum five stone Diamond Ring. #50-80
218. A 9ct gold Wedding Band.
219. A Victorian gold MOURNING BROOCH set with nine almandine garnets in a lozenge formation and having a lock of hair en verso. £40-50
221. A Jewellery Box containing two ladies wristwatches, crystal necklace and other costume jewellery. £20-30
222. Ten old Jewellery Boxes. £20-30
223. A 12ct gold Wedding Band, 10 grammes. £20-30
224. An Eternity Ring (AF) and a citrine single stone Ring. Both 9ct gold. £20-30
225. A Bow Brooch and a Butterfly Bar Brooch. Both 9ct gold with seed pearls. £25-35
226. A bright cut Bangle marked 'Sterling Silver' and a yellow agate Bangle. £20-30
227. Pearl Necklaces, two single strand and a three strand (AF). £20
228. A 9ct rose gold Double Belcher Chain. £25-35
229. Four Necklaces and a curb/heart Bar Brooch. £25-35
230. Silver cufflinks, gold signet ring, pair of earrings, a pearl pendant, and silver pocket watch. £20
231. A silver mounted Scottish Rabbit's Foot Brooch and an oval carved ivory Brooch 5cm (2). £20
232. A pair of rolled gold Earrings set with hexagonal red stones.
233. A George V 9ct gold RING, set with five oval garnets and bright cut shank, boxed. Birmingham 1918. £40-60
234. A Victorian 9ct gold Mourning Brooch. £25-40
235. A 9ct gold designer Ring. £20-30
236. An 18ct gold sapphire and diamond HALF-HOOP RING. £70-90
237. A pair of 9ct gold ruby EARRINGS. £70-90

238. A 9ct gold Bow Brooch.
239. A 9ct gold cameo Ring.
240. An Art Deco 18ct gold and platinum SAPPHIRE AND DIAMOND RING. £100-150
241. A 9ct gold diamond Ring.
242. A 9ct gold ruby Half-Hoop Ring.
243. An 18ct gold sapphire and diamond 3 stone RING. £280-350
244. A pair of amber Earrings.
245. A 9ct gold Ring.
246. A 9ct gold buckle Ring.
247. A 9ct gold curb BRACELET. £40-60
248. A pair of 9ct gold Cufflinks. £20-30
249. A 9ct gold opal and diamond RING. £70-90
250. A pearl wishbone Brooch.
251. A 9ct gold cabachon ruby and pave set DIAMOND PENDANT. £200-300
252. A 9ct gold Brooch. £30-50
253. Two old Locketts.
254. A 9ct gold sapphire Ring.
255. A 9ct gold Cross on a 9ct gold Chain.
256. A 9ct gold opal and sapphire Ring. £20-30
257. A 9ct gold Ring.
258. A 9ct gold Snake Ring set with 3 rubies. £30-40
259. A 9ct gold sapphire Ring. £20-30
260. A 9ct blue topaz and diamond PENDANT. £180-250
261. A 9ct gold opal and diamond CLUSTER RING. £180-250
262. An 18ct gold and platinum collet set ruby and diamond RING. £80-100

263. A Victorian 9ct gold SLAVE RING. £80-120
264. A 9ct rose gold Ring. £20-30
265. A 9ct gold onyx heart Ring.
266. An 18ct gold emerald and diamond POLKA DOT RING. £400-500
267. A 9ct gold half-hoop Ring.
268. A 9ct gold wishbone Ring.
269. An Edwardian 15ct gold pearl and diamond GYPSY RING. £200-300
270. A 9ct gold Pendant set with blue and white stones.
271. An 18ct gold 5 stone diamond RING. Birmingham 1918. £60-80
272. An 18ct white gold diamond HALF-HOOP RING. £300-400
273. A Victorian/Edwardian 9 ct gold multi-gem BRACELET with safety chain,
boxed. £150-200
274. A 9ct gold opal and sapphire Cluster Ring. £20-30
275. An Art Deco 18ct white gold EMERALD AND DIAMOND RING. £350-450
276. A Victorian 9ct rose gold curb NECKLACE with a bright cut crucifix.
£80-120
277. A 9ct rose gold curb ALBERT. £150-180
278. A 9ct gold DRESS RING with three oval black sapphires enclosed by illusion
set diamonds. £120-150



279. An opal and diamond DRESS RING on a gold shank. (See illustration.)
£250-£350
280. An 18ct gold and platinum 3-stone RING with central baguette emerald flanked by diamonds. (See illustration.)
£120-180
281. An 18ct gold 3-stone RING, claw-set with central round sapphire flanked by round diamonds. (See illustration.)
£180-250
282. A 9ct gold RIBBON PENDANT set with two opals. (See illustration.)
£120-180
283. An 18ct gold DRESS RING with 2 amethysts and 2 diamonds (1 amethyst missing).
£120-180
284. An 18ct white gold 3-stone DIAMOND RING, each stone 3mm diameter.
£180-250
285. A large oval DRESS RING with a 15mm central oval opal enclosed by a single row of diamonds, on an 18ct gold shank, boxed. (See illustration.)
£1000-1500
286. A modern 22ct gold RING set with cabochon and baguette sapphires in the manner of the Arts & Crafts movement. (See illustration). £280-350
287. A similar lot with rubies. £280-350
288. A similar lot with rubies. £280-350
289. A large 18ct white gold MARQUISE RING set with central baguette 1.4 carat emerald, enclosed by sixteen small diamonds, flanked by two round 0.5 carat diamonds. (See illustration.)
£2000-2500
290. A DRESS RING with central oval sapphire surrounded by two rows of diamonds on an openwork 18ct gold shank. (See illustration).
£1000-1500
291. A diamond SOLITAIRE RING on an 18ct gold shank. 2.2 carat, boxed. (See illustration.)
£3000-3500



292. A diamond SOLITAIRE RING mounted in a heavy 18ct gold shank. 1.1 carat.
£1200-1500
293. An 18ct gold DOUBLE CURB BRACELET. 120 grammes (4 oz). £900-1200
294. An Arts & Crafts white metal NECKLET. £40-60
296. A Victorian 9ct gold Bow Brooch with pendant. £40-60
297. A Victorian 18ct gold RING set with five graduated diamonds. Birmingham
1863. £250-350
298. A diamond SOLITAIRE RING, 0.5/6 carat, claw set in silver on a 9ct gold
shank. £350-450
299. A 9ct gold CHARM BRACELET, 32 grammes. £60-90
300. A 9ct gold CHARM BRACELET, 40 grammes (all in). £80-120
301. A 1974 KRUGERRAND Pendant on a 9ct gold belcher chain. £200-250
302. A 9ct gold PENDANT with central heart shape amethyst enclosed by seed
pearls. £50-80
303. A cross-over Brooch with single oval opal. (1 stone missing). £40-60
304. An 18ct gold and platinum 3-stone diamond RING. £120-150
305. An 18ct gold diamond SOLITAIRE RING. £120-150
306. An 18ct gold DRESS RING with central round aquamarine enclosed by eight
illusion set diamonds. £50-80
307. An 18ct gold CROSS-OVER RING set with two round emeralds. £80-120
308. A 9ct gold BRACELET 42grammes (1.1/4 oz). £80-100
309. Five Victorian and later Bead Necklaces. £20-30
310. Cameo Brooch, gold buckle ring, etc.
- 310A. A 1915 Sovereign PENDANT. £50-70
- 310B. A 1900 Half-Sovereign PENDANT with a flat curb chain. £50-70

COINS & MEDALS

- 311. A Victorian Half-Sovereign, 1896. £40-60
- 312. An Edward VII Coronation Coin, five crowns and further English and European coins.
- 313. Assorted Roman and other coins.
- 314. Assorted English coins.
- 315. Three Crowns, 1887, 1965 (Churchill), and 1980 (Queen Mother).

- 315A. Two WWI Service Medals and a Churchill Crown.

NETSUKE

- 316. A signed Japanese ivory Netsuke study of a noh play actor standing holding a face mask and a fan. £30-40
- 317. A signed Japanese hardwood Netsuke study of Jorogin the Immortal of All Wisdom with his large domed head. £30-40
- 318. A well detailed and signed Japanese hardwood Cabinet Netsuke study of a fisherman returning with his catch. £30-40
- 319. A signed Japanese ivory NETSUKE, a traditional study of chestnuts. £50-60
- 320. A finely detailed and signed Japanese ivory NETSUKE study of a seated youth sleeping in fine kimono. £50-60
- 321. A signed Japanese ivory NETSUKE, a well detailed study of a street pedlar carrying various wares. £60-70
- 322. A signed Japanese ivory NETSUKE study of a fat Buddhist monk in fine decorated robes laid upon a sack. £60-70

SILVER AND PLATE

323. A silver PUNCH LADLE with a twisted whalebone handle, the bowl impressed with a 1702 shilling. £80-120
324. A silver PUNCH LADLE with a twisted whalebone handle, the bowl impressed with a 1777 Spanish coin. £80-120
325. A set of four pairs of electroplate Fish Knives and Forks with bone handles.
326. A set of six pairs of silver KNIVES AND FORKS with bright cut decoration, cartouche banding and mother of pearl handles. Sponsor JG. Birmingham 1864. Together with similar electroplate Sweet Knife. £60-90
327. A set of six Edwardian silver TEASPOONS the handles engraved 'H' in a satin lined Mappin & Webb case with provision for tongs. Sponsor GJ & DF. London 1909. 160 grammes (5.1/4 oz). £40-60
328. A silver backed Hairbrush, Shoe Horn and two lace hooks. Various marks. £20-30
329. A Victorian SCENT BOTTLE in slice cut green glass, with a repousse hinged lid in the form of a crown. 10cm (4") high. £60-90
330. A pair of George V silver rat-tail Sugar Nips. Sheffield 1911.
331. A set of six William IV silver fiddle pattern TABLE FORKS. Sponsor Mary Chawner. London 1836. 300 grammes (9.1/2 oz). £50-80
332. A set of six pairs of electroplate Fish Knives & Forks, cased. £20-30
333. An electroplate Pickle Fork with a twist bone handle.
334. A pair of electroplate and mother of pearl Carvery Rests and 3 silver napkin rings. £20-30
335. A small silver Letter Knife with dolphin handle. Import marks.
336. A pair of silver Clothes Brushes.
337. A set of six pieces of electroplate Cutlery, in a satin lined case, together with an electroplate Cream Jug. £20-30
338. Five silver Trophies, early 20th C. £30-40

339. A Victorian pierced and repousse circular BON-BON DISH on raised base.
Sponsor J D & S. Sheffield 1894. 95 grammes (3 oz). £60-90
340. A pair of Victorian repousse circular BON-BON DISHES. Sponser S B & W S.
Sheffield 1895. 55 grammes (1.3/4 oz). £40-604
341. A Victorian pierced and repousse heart shaped BON BON DISH on ball feet.
Sponsor H M. Birmingham 1901. 22 grammes (3/4 oz). £30-40
342. A Victorian pierced and repousse heart shape BON BON DISH on ball feet.
Sponser M & L. Birmingham 1897. 34 grammes (1 oz). £30-40
343. A George IV silver FRUIT SPOON with a bright cut handle, gilt bowl
embossed with fruit. Sponsors Wm Eley and Wm Fearn. London
1823. £20-30
344. A George V circular silver TEAPOT with ebony scroll handle and finial.
London 1910. 430 grammes (14 oz) all in. £100-150
345. A George VI silver TEAPOT of canted rectangular form with caddy lid,
rounded base on four stepped feet, ebonised handle and
finial. Sponsor ALD. Birmingham 1937. 600 grammes (19.1/2
oz) all in. £120-180
346. A George VI silver THREE PIECE TEASET of elliptical form with a single
milled band of decoration. Sponsor S&W. London 1937. 1065
grammes (35 oz) all in. £280-350
347. An Edwardian silver THREE PIECE TEASET of plain flowerhead design.
Sponsor J & C. Birmingham 1905. 750 grammes (24.1/2 oz) all
in. Together with a similar Coffee Pot without hallmarks.
400 grammes (13 oz) all in. £400-600
348. A Mappin & Webb bone handled eight place CUTLERY SET in an oak
Canteen-on-stand. £150-200
349. An electroplate Teapot on a warming stand. £25-40
350. Three Sheffield Plate Candlesticks. (AF)
351. An electroplate Cake Basket with swing handle.
352. An electroplated Coffee Pot in the form of a Grecian ewer and engraved
with classical decoration. £25-40
353. A Victorian TABLE CRUET with six cut crystal bottles on a hexagonal
electroplate stand. £80-120
354. A Sheffield Plate CHAMBERSTICK with snuffer. £30-50

355. A 19th C Sheffield Plate CASTOR with detachable pierced cover over a bulbous octagonal body and terraced foot 16 cm (6.1/2") high. £25-40
356. Six Victorian fiddle pattern DESSERT SPOONS and LADLE. 280 grammes (9 oz). £30-50
357. Two pairs of Victorian silver Sugar Tongs.
358. Silver handled button hook, 1845 Caddy Spoon, etc.
359. A bone handled electroplate Cutlery Set, cased. £20-50
360. Spare Lot.

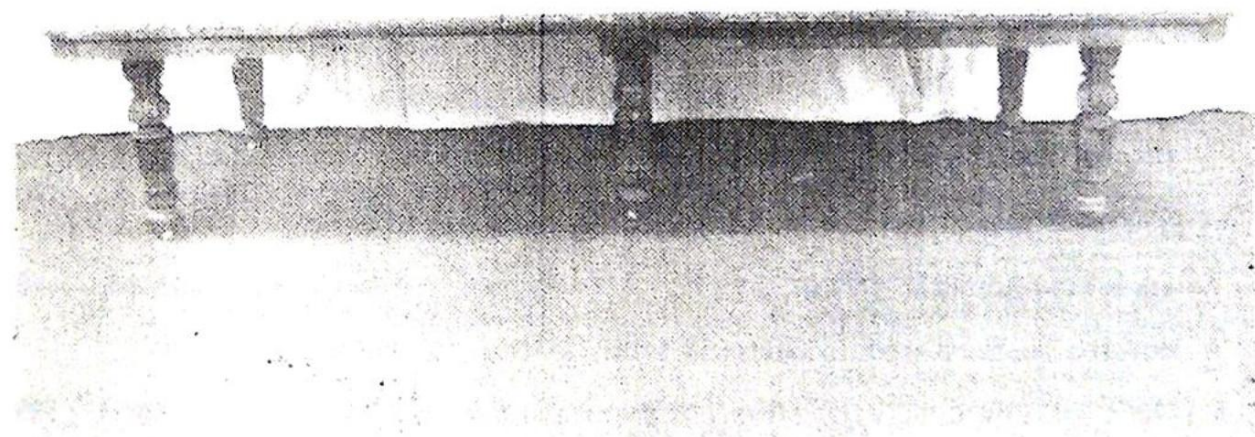
PICTURES

361. A modern Print 'Tattenham Corner', the Derby, after Alken. £30-50
362. A modern print 'Sandown, after Snaffles. £30-50
363. A Swiss pastoral scene Print.
364. Two framed old Portrait Photographs.
365. Two colour Prints.
366. Two large photo-engravings 'The Toast' and 'A Runaway Match', and further print of 'Winterstille', all in oak frames. £25-35
367. A 19thC painting of a Soldier and Horse, oil on canvas, unsigned, in an ebonised frame. 60cm x 46cm (24" x 18"). £40-60
368. A needlework Collage of a lady in a ball gown standing by an ovolo column, in a Victorian gilt frame. £30-50
369. An oil painting of a terrace of houses signed John Piper and a landscape print. £30-50
370. An oil-on-canvas of Water Lilies, unsigned, in a gilt frame. 31cm x 61cm (12" x 24"). £25-40
371. A Victorian gilt framed print of Mr & Mrs Gladstone. £30-40
372. H E Kirk. A scene of girl at roadside at the gate of a thatched cottage. Oil-on-board. Signed and inscribed 'Old Wilford'. 23.5cm x 31 cm (9.1/2" x 12") in gilt frame. £30-40

373. ? H. Cubley. 19thC, signed, oil on canvas, inscribed verso 'On Loch Levan Bullyhullish. Painted from nature, by ? H. Cubley Newark on Trent. £80-120
23cm x 27cm (9.1/2" x 14.1/2").
374. A watercolour entitled 'Old Market Place, Grimsby', signed L Johnson. £30-50
28cm x 37cm (11" x 15").
375. A similar lot, 37cm x 28cm (15" x 11"). £25-40
376. A set of six Hunting Prints, after J F Herring, Snr in black frames. £20-30
377. A north Mediterranean Coastal Scene, watercolour, unsigned, in a gilt frame. 21cm x 26cm (8.1/2" x 10"). £25-40
378. A Coastal Scene, watercolour, unsigned, in a modern gilt frame. 26cm x 36cm (10" x 14"). £25-40
379. to 399. Spare Lots.
399. A 20th C female nude, oil on canvas, bears signature W Moralt. 20cm x 25cm (8" x 10"). £80-100
400. F Varley. Two sailing dinghies and a palm beach 20th C watercolour, signed. 18cm x 28cm (7" x 11"). £30-40
401. J H Sharples. A 20th C still life of roses, bluebells and other flora in a blue vase, oil on canvas, signed. 35cm x 25cm (14" x 10"), in a modern gilt frame. £40-60
402. English School. A late 19th C landscape with two cowhands and small herd of cattle, oil on canvas mounted on board. 39cm x 50cm (16" x 20") in a maple frame. £60-90
403. Unsigned mid-European scene with buildings in an olive grove, an unfinished work. £30-40
404. A 20th C landscape with lady and two children in the foreground. £50-80
25cm x 23.5cm (10" x 13") in a gold mount and gilt frame.
405. GUDRUN SIBBONS. A pair of Flamenco Dancers, oil on canvas, signed. 50cm x 30cm (20" x 16") in a gilt frame. (See illustration.) £150-200
- # For a similar work by this artist refer to Antiques Trade Gazette 26th January 1991 p.38.
406. W Petroff. An interior architectural scene of the St Sofia Mosque, 20th C oil on canvas mounted on board. Signed W Petroff, Istanbul. 45cm x 32cm (17.1/2" x 12.1/2"). £80-120

409. A copper Engraving Plate of a scene with a Sheraton sideboard and ornamentation.
408. A 19thC print 'The Good Shepherd'.
411. A Jacobean style dark oak GATELEG TABLE with lunette carved oval top and turned legs. £40-60
412. A pair of ladderback Bedroom Chairs with barleytwist legs and rush seats.
413. An Edwardian rectangular Music Stool. £20-30
414. A Victorian wrought iron Standard Lamp converted to electricity. £30-40
415. A Benares OCCASIONAL TABLE with recessed circular brass top, on a folding ivory inlaid six leg base. £40-60
416. Three Edwardian Chairs and a Towel Rail (AF).
417. A small oak Table.
418. A Victorian mahogany ARMCHAIR upholstered in gold button dralon with turned front legs. £80-120
419. A 1930's leathered two seater Sofa with drop-arm. £25-40
420. An Edwardian Armchair (AF).
421. A Footstool upholstered in buttoned brown leather, with four bun feet.
422. A 1920's oak SIDEBBOARD with linenfold doors and barleytwist legs. £40-60
423. A 1930's oak Dressing Chest. £25-40
424. An Edwardian Chest of 2 short and 3 long drawers with later applied top and base. £50-80
425. A Victorian painted pine WASHSTAND. £50-80
426. An Edwardian stripped satinwood Chest of three drawers. £25-40
427. A stripped pine Chest of two short and two long drawers. £40-60
428. A late Georgian pine CHEST of three graduated drawers with turned knob handles and feet (AF). 60cm (24") wide. £50-80
429. A pair of Victorian cast iron GARDEN SEAT ENDS. £40-60
430. A George III oak dome top TRUNK with iron strapwork. £80-120

431. A late Georgian elm bow-back WINDSOR CHAIR with pierced vase splat and crinoline stretcher. £100-150
432. An early 19thC ash and elm bow-back WINDSOR CHAIR. £80-120
433. A Georgian elm bow-back WINDSOR CHAIR. £200-250
434. A Victorian lathback GRANDFATHER CHAIR (AF). £25-40
435. A Victorian lathback GRANDFATHER CHAIR. £50-80
436. A Victorian oak pull-out DINING TABLE, the top having four extension leaves with moulded edge, on six carved reeded and turned legs. 410cm x 130cm (13'5 x 4'3). (See illustration.) £800-1200

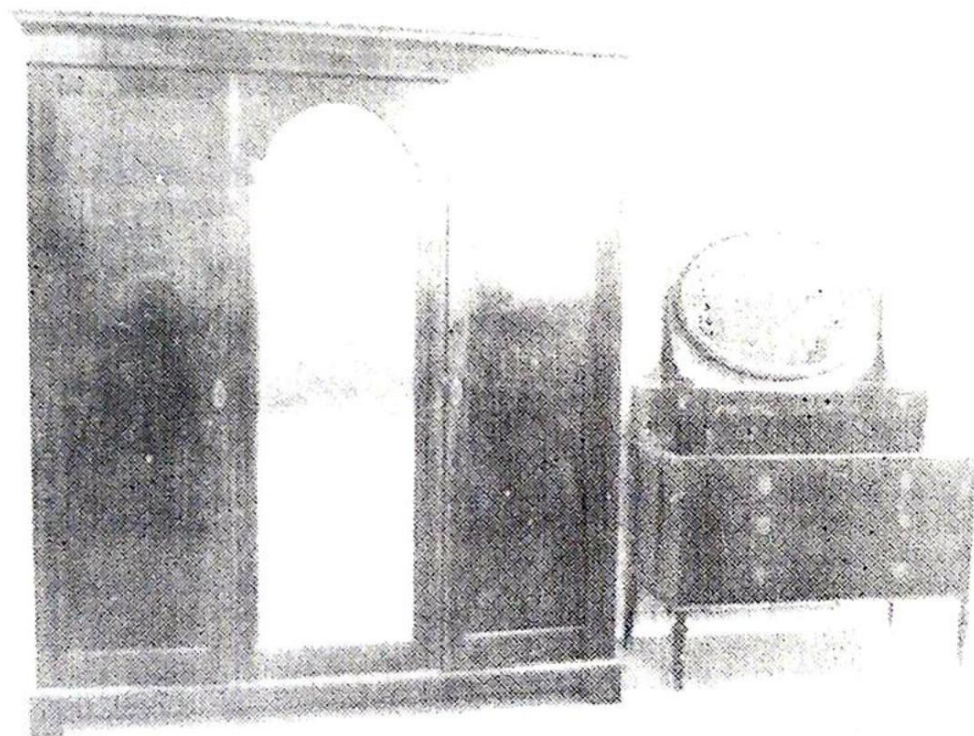


437. A Tub Nursing Chair with floral loose covers. £25-40
438. A Victorian balloonback Bedroom Chair upholstered in green dralon.
439. An Edwardian walnut barback NURSING CHAIR with turned front legs. £60-90
440. A 1920's burr walnut oval Coffee Table. £25-40
441. A 1920's burr walnut Tip-Top Table with pie crust edge. £40-60
442. A pair of 1920's oak Bedroom Chairs in the Queen Anne style. £20-30
443. A late Victorian mahogany OCCASIONAL TABLE with leaf carved top, shaped legs and undershelf. £80-120
444. A Victorian pine fall flap Kitchen Table with scrub top, two drawers and turned legs.

445. A Victorian pine scrubtop Kitchen Table. £25-40
446. A circular Edwardian Occasional Table with four shaped legs and undershelf. £30-40
447. An Edwardian mahogany Washtand with later applied top. £40-60
448. A Victorian ash POT CUPBOARD. £50-80
449. A George III elm BLANKET BOX. £60-90
450. A Victorian mahogany WALL CABINET with two doors over an open shelf. 56cm (22") wide. £30-50
451. A small pine 24 drawer Cabinet. £20-30
452. A late Georgian inlaid mahogany hanging CORNER CABINET with dentil cornice and shaped astragals 103cm (41") high. £200-300
453. A George III oak bow front hanging CORNER CUPBOARD 42cm (36") high. £120-180
454. A set of six 1920's oak DINING CHAIRS with moulded cresting rails, splat backs, drop-in floral tapestry seats, barleytwist front legs and plain 'H' stretchers. £380-450
455. An Elizabethan style drawleaf oak REFECTORY TABLE, the seven plank top over a carved frieze, the four fluted and carved bulbous legs joined by a plain stretcher, late 29thC. 105cm x 259cm (41.1/2" x 102") maximum. £700-900
- # Formerly of St George's Rectory, Stamford.
456. A Victorian ash and elm SMOKER'S BOW CHAIR with a double 'H' stretcher. £120-150
457. A Victorian oak KNEEHOLE DESK with leather top, 3 frieze drawers and 3 graduated drawers to each pedestal, with knob handles. 117cm x 68cm (46" x 27") £280-350
458. A William IV mahogany TORCHERE, the scalloped octagonal top surmounting a taper twist column with a ringed centre piece and square lower section, on a quadruped sabre leg base, satinwood and ebony stringing throughout. 142cm (52") high. £200-300
459. A set of five Victorian WINDSOR SIDE CHAIRS with balloonbacks, recessed seats, turned legs and stretchers. £120-180
460. A Victorian mahogany BREAKFAST TABLE with circular tip-top on an octagonal swell pedestal, trefoil base with bun feet. 122cm (48") dia. £350-400

461. A set of four Victorian mahogany DINING CHAIRS with shaped balloon backs, and taper turned front legs. £350-450
462. An early Victorian mahogany DINING TABLE the double moulded top having two extra leaves, the turned and reeded legs terminating with ceramic castors. 122cm x 210cm (48" x 83"). (See illustration.) £400-600
463. A Victorian mahogany wind-out DINING TABLE, the plain oval top and frieze on four square taper legs with spade feet terminating with brass castors. No extra leaves. 122cm x 153cm (48" x 60"). £180-250
464. A Victorian mahogany wind-out DINING TABLE with plain top with two extra leaves, on four cabriole legs having acanthus carved knees, ball & claw feet, on brass and ceramic castors. 122cm x 996cm (48" x 66") maximum. £300-500
465. A Victorian oak wind-out DINING TABLE the plain top and frieze over four heavy fluted and carved taper legs, terminating with brass and ceramic castors. The table has a single leaf to cover 152cm x 178cm (60" x 70"), the undercarriage having provision to withstand many further leaves. £400-600
466. A late Georgian yew bow-back WINDSOR CHAIR, with pierced splat and turned supports, recessed elm seat, turned legs and 'H' stretcher, and a later ash section above the arm bow. (See illustration) £250-350
467. A Regency mahogany TEA TABLE, the plain circular snap-top on pear shape baluster column, supported by three fluted splay legs with reeded brass cappings and castors. 89cm (35") diameter. £250-350
468. A George III elm Carver Chair with camel-back, pierced vase splat and plain legs. Later arms. £30-50
469. A Victorian mahogany Step Commode (AF). £20-30
470. An Edwardian mahogany Side Cabinet with shaped 'X' stretcher. (AF) £50-80
471. An oak JOINT STOOL. £80-120
472. A Victorian birds-eye maple TRIPLE WARDROBE the moulded cornice beaded with mahogany, surmounting three arch top doors, mirrored central door enclosed by barleytwist columns and flanked by two doors having scratch carving and applique moulding enclosed by similar columns, on a moulded base. £600-900

473. A Victorian ebonised **WARDROBE COMPACTUM** the moulded arch top surmounting a single mirror door over drawer, flanked on each side by a set of six graduated drawers, on a moulded base. Decorated throughout with white painted simulation inlay. £300-500
474. An Edwardian flamed mahogany **BEDROOM SUITE** comprising fitted triple wardrobe with central mirror door, dressing table with oval mirror, two short and two long graduated drawers, fluted legs and brass castors, and washstand (no top). (See illustration.) £400-600



475. A George III elm hanging **CORNER CUPBOARD** with plain panel door, iron 'H' hinges and shaped shelves. 91cm (36") high. £150-200
476. An early Victorian mahogany **CHEST** of 2 short and 3 long graduated drawers with turned knob handles. 114cm (45") wide. £150-200
477. A Victorian walnut **DRESSING TABLE MIRROR**, the arched glass supported by two turned and carved pillars, on a stepped and shaped base with scroll feet. £80-120
478. A Victorian oval **WALL MIRROR** with bevel glass. £50-70

479. A late Victorian oak SECRETAIRE CABINET, having fitted drawer over two carved panel doors. Formerly having a bookcase top. 122cm (48") wide.
£80-150
480. A 1920's walnut BUREAU BOOKCASE the arched and glazed astragal top over a fall flap, two drawers and cabriole legs with ball and claw feet. 77cm (30") wide.
£200-300
481. A Georgian oak CHEST of three long and two short graduated drawers with brass knob handles and bracket feet. 100cm (40") wide.
£180-250
482. A Victorian mahogany Swing Toilet Mirror with drawer base.
£25-35
483. A Victorian cast iron FIREPLACE with a marbled and polished slate surround.
£100-150
484. A brass top fireguard.
485. A mid 19th C Flemish walnut DOUBLE WARDROBE, the two beaded and herringbone banded doors enclosed by fluted columns adorned with acanthus scrolls on a base with turned feet.
£200-300
486. A 1920's oak SIDEBBOARD with mirror back.
487. A small Victorian Wall Mirror.
488. A modern rectangular Wall Mirror.
489. A stripped pine WARDROBE with mirror door and drawer base. £60-90
490. A Victorian oak Fire Surround. £30-40
491. A 1920's barleytwist oak Music Cabinet £25-35
492. A Jacobean oak OVERMANTEL PANEL with three arched fields with demi lune and scoop carving.
£350-500
493. A modern oak WELSH DRESSER made in oak from the Belvoir Estate. £180-250
494. A 1920's oak Single Wardrobe with beaded double doors and drawer base.
£40-60
495. A 1920's oak BUREAU BOOKCASE the upper section having a moulded cornice surmounting two astragal glazed doors, the lower section having a beaded and applique moulded fall flap enclosing a fitted interior, over two short and a single long drawer with brass pear handles, on barleytwist legs with moulded stretchers. 107cm (42") wide 214cm (84") high.
£500-800
496. An upright Grand PIANO by Kent & Cooper Ltd, Lincoln, with iron frame, walnut case with Art Nouveau urn motif.
£60-90

- 497. A Victorian mahogany swing TOILET MIRROR with drawer base.
- 498. A Victorian pine DRESSER BASE with six drawers. £60-90
- 499. A Regency rectangular WALL MIRROR in a flamed mahogany frame. £40-60
- 500. A Victorian mahogany swing Toilet Mirror. £25-40
- 501. A Victorian painted CABINET BOOKCASE. (AF). £100-150
- 502. A Victorian marbletop Washstand with tiled back. (AF). £50-80
- 503. A Benares brass Traytop Table. £20-30
- 504. An Edwardian two seater Boudoir Sofa. £50-80

CARPETS AND RUGS

- 521. A Shiraz Runner, 338cm x 113cm. £150-200
- 522. A Joshaghan Carpet, 236cm x 600cm. £500-700
- 523. A Kurdish Rug, 187cm x 103cm. £150-200
- 524. A Shiraz Runner, 365cm x 138cm. £200-300
- 525. An Azerbyjan Kelim, 144cm x 200cm. £80-120
- 526. A Dergazine Rug, 117cm x 82cm. £100-150
- 527. A Hamadan Rug, 192cm x 119cm. £100-150
- 528. A Kurdish rug, 207cm x 102cm. £100-150
- 529. A Bakhtiar Carpet, 208cm x 309cm. £400-550
- 530. A Bakhtiar Carpet, 164cm x 352cm. £150-200
- 531. An Ardebil Carpet, 332cm x 225cm. £500-700
- 532. A Caucasian Rug, 158cm x 99cm. £80-120
- 533. A Shiraz Rug, 219cm x 120cm. £100-150
- 534. A Dergazine Rug, 148cm x 85cm. £100-150
- 535. A Tabriz Carpet, 314cm x 294cm. £280-350

536. An Azerbyjan Kelim, 357cm x 140cm. £200-300
537. A Turkoman Dozar, 162cm x 136cm. £180-250
538. A Koliaey Pardeh, 269cm x 157cm. £180-250
539. A Bakhtiar Carpet, 291cm x 210cm. £400-500
540. A Hamadan Dozar, 205cm x 124cm. £100-150
541. A Tabatabaei Zaranim, 154cm x 96cm. £100-150
542. A Bluch Rug, 178cm x 94cm. £80-120
543. An Azerbyjan Carpet, 240cm x 162cm. £150-200
544. A Malayer Runner, 106cm x 290cm. £120-180
545. A Bluch Runner, 296cm x 74cm. £180-150
546. A Bijar Dozar, 202cm x 130cm. £250-320
547. A Kalardashi Dozar, 208cm x 143cm. £180-250
548. A Gharajeh Dozar, 181cm x 150cm. £180-250
549. A Shiraz Carpet, 259cm x 160cm. £180-250
551. A Malayer Zaranim, 153cm x 107cm. £100-150
552. An Afshar Rug, 205cm x 155cm. £350-500
553. A Tabriz Dozar, 186cm x 139cm. £150-200
554. A Savah Zaronim, 150cm x 94cm. £80-120
555. An Azerbyjan Runner, 400cm x 70cm. £180-250
556. A Hamadan Runner, 300cm x 80cm. £180-250
557. A Hamadan Runner, 290cm x 79cm. £180-250
558. An Azerbyjan Kelim, 260cm x 133cm. £150-200
559. An Azerbyjan Kelim, 100cm x 92cm. £50-80
560. A Kurdish Kelim, 126cm x 107cm. £50-80
561. A Shiraz Rug, 230cm x 136cm. £120-180

- 562. A Bluch Kelim, 124cm x 110cm. £50-80
- 563. A Mahal Dozar, 203cm x 127cm. £180-250
- 564. A Mahal Dozar, 201cm x 133cm. £180-250
- 565. An Azerbyjan Runner, 300cm x 80cm. £180-250
- 566. A Joshaghan Zaronim, 157cm x 105cm. £180-250
- 567. A Bluch Rug, 211cm x 118cm. £180-250
- 568. A Bluch Rug, 187cm x 110cm. £120-180
- 569. A Sarogh Dozar, 221cm x 135cm. £200-300
- 570. A Savah Zaronim, 146cm x 105cm. £80-120
- 571. A Shiraz Rug, 202cm x 106cm. £100-150
- 572. An Afshar Dozar, 225cm x 150cm. £350-450
- 573. A Borchalou Dozar, 227cm x 138cm. £200-300
- 574. A Savah Zaronim, 151cm x 104cm. £80-120
- 575. A Hamadan Dozar, 211cm x 135cm. £150-200
- 576. A Lillihan Carpet, 315cm x 200cm. £400-500
- 577. A Malayer Carpet, 312cm x 219cm. £300-400
- 578. A Heriz Carpet, 361cm x 282cm. £700-900
- 579. A Najafabbot Carpet, 310cm x 205cm. (See illustration). £500-800
- 580. A Lioness Skin Rug with stuffed mask. £50-80

END OF SALE



FORTHCOMING AUCTIONS

THE COMPLETE AUCTION SERVICE

GOLDINGS will sell by AUCTION

ANTIQUE AND MODERN HOUSEHOLD FURNITURE & EFFECTS

on Wednesday 9th & 16th December 1992, at 10am

**Viewing: Day prior to Sale 1pm to 5pm
& Saleday 9am to 10am**

INSURANCE & PROBATE VALUATIONS

Our next Catalogued Sale of

ANTIQUES AND FINE ARTS

is on Wednesday 24th February 1993, at 10am

Further entries of: Furniture, Paintings, Prints, Glass, Ceramics, Toys, Silver, Clocks, Watches, Jewellery, Metalware, Stamps, Coins, Books, Arms & Armour, Bygones, etc, Are Required before Friday 5th February.

Sale includes a Derby Cream Jug, c.1760 painted by Withers.

FREE SALE VALUATIONS

For a FREE Valuation please contact our Auctioneer & Valuer, Colin Young ANAVA for an appointment either at the Auction Rooms or in your home. He is available to advise you in the strictest confidence of all your Antiques and Works of Art.

Established 1900

— GOLDINGS —

Chartered Surveyors, Auctioneers & Valuers
Residential, Commercial, Agricultural, Antiques & Fine Art

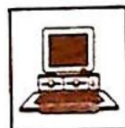
45 High Street, Grantham, NG31 6NE
Telephone: 0476 · 590211

PROFESSIONAL SERVICES FOR



RESIDENTIAL

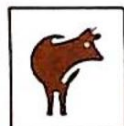
We have a department headed by Chartered Surveyors to undertake valuation and sale of all types of property from Castles to Town Houses. Surveys, Homebuyers Reports, Mortgage, Insurance and Probate Valuations to individual requirements.



COMMERCIAL

Property; Dealing with the survey of Shops, Offices and Factories. Sale, Valuation and Rent Reviews, Lease negotiations and Rent Arbitration for the landlord and tenant.

Plant, Machinery & Assets; Sales for Receivers, Liquidators, High Court & County Court. Auction Sales on Site prepared for private and public clients alike.



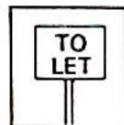
AGRICULTURAL

Our Senior Partner has wide experience in the sale and valuation of Agricultural Properties, conducting Farm Sales and Valuation of Live and Dead Farming Stock for dissolution, Probate and other matters. Other areas covered include Rent Reviews, Development Land reports and Annual Stocktaking Valuations.



FINANCIAL SERVICES

Our Experienced Consultant is available to advise on all matters concerning Finance, Mortgages, Insurance, Investment, Planning and Pensions.



PROPERTY MANAGEMENT

Personal service and attention to detail ensures that our management team exploits your investment portfolio whether an Individual Family Home let for a small fee or Office, Factory, Shop or Farm with rent collected and regular inspections made.

Saleroom Manager
Colin R. Young ANAVA

Partners
C. Robin Hall FRICS FRAV
Ian J. Shaw FRICS, FNAEA

Financial Service Consultant
John G. Stukins

— GOLDINGS —

ANTIQUES DEPARTMENT



GENERAL ENQUIRIES

Our Auction Rooms are open concerning valuation appointments, sales information, house clearance and transport arrangements from 9 am to 5 pm Monday to Friday. Please telephone Grantham (0476) 65118



VALUATIONS

For items too large or numerous to bring to us our valuer can visit your home to give personal advice on the best method of sale.

With an increasing number of thefts, particularly of Antiques & Works of Art it is essential to have a detailed inventory and report with photographic records. This can be invaluable when negotiating with Insurance Companies.



SELLING WITH GOLDINGS

For over 90 years we have held sales in Grantham. Our spectrum ranges from important paintings, such as two examples by Fred Stead selling for \$10,800 to items of a few pounds.

Our versatility enables us to deal with single items to Country House Sales with the same level of professional competence. Flexible commission rates, extensive register of specialist buyers and regular sales ensure that your valuables get the widest International exposure and that selling with us is a pleasurable and profitable experience.

HOW TO FIND ...
"THE LARGEST
PURPOSE BUILT
AUCTION ROOMS
IN THE AREA"

