



Established 1900

GOLDINGS

Auction Rooms

Old Wharf Road, Grantham, NG31 7AA

Telephone: 0476 · 65118 Fax: 0476 · 590998

Auctioneers

Valuers

Surveyors

Estate Agents

Upon instructions from the Directors
of Spelminster Ltd. due to re-organisation and others

GOLDINGS will sell by AUCTION

BUILDING MATERIALS

SITE PLANT AND EQUIPMENT

VEHICLES, ETC...

on site at Laxton Woodyard

Near Harringworth Northamptonshire

on Saturday 7th November 1992 at 10 am

Viewing: Friday 6th November 10am to 4pm
and Saleday from 9am

Terms: Cash - Cheques by prior arrangement only

THE COMPLETE AUCTION SERVICE

Auction Sales in our Salerooms or on your premises of: Antique & Modern Furniture & Effects · Office Shop & Catering Equipment
Vehicles · Plant & Agricultural Machinery · Stock-in-Trade · Business Assets · Liquidations & Receiverships
VALUATIONS undertaken for Insurance, Probate, Family Division and Sale Purposes · Full HOUSE CLEARANCE SERVICE.

VAT No. 568 0636 19

CONDITIONS OF SALE

1. The highest bidder shall be the buyer. The Auctioneers reserve the right of regulating the biddings: of rejecting any bid; and of bidding for, withdrawing, consolidating, dividing or altering the order of lots.
2. The purchase money for each lot with the usual commission of 5% plus VAT shall be paid at the fall of the hammer (if required). Each lot at the fall of the hammer shall be at the sole risk and expense of the buyer, and shall be paid for and removed immediately after the conclusion of the sale, *but no lot shall become the property of the buyer, or be removable until paid for*, and if taken away in contravention of these conditions without an order for removal signed by the Auctioneers, they shall have power to seize the same by their servants or agents, or otherwise, or the Auctioneers may recover either the lot sold or the price thereof (at their option) by action at law.
3. No contra account of any description whatever will be allowed to the buyer as a set off, and payment for each Lot shall be made to the Auctioneers or their clerk only, and a buyer paying by cheque must give satisfactory references (if required).
4. For all purposes of this sale the Clerk of the Auctioneers shall be deemed to be the agent of both seller and buyer.
5. A bidder shall not be allowed to retract his bidding after the fall of the hammer, and he shall give up his full name and address if required. The Auctioneers will not recognise the transfer of any lot from one buyer to another, nor make any alteration in the sale book in respect thereof.
6. The Auctioneers are acting only as agents, and give no personal warranty as to the condition, quality or authenticity of any chattels offered for Auction. Any catalogue description is given merely as guide to purchasers, any description can be changed from the rostrum before the lot is sold. If a purchaser buys without previous inspection he will do so at his own risk.
7. Notwithstanding any other terms in these Conditions, if within 7 days of the Sale a purchaser gives notice in writing that a lot is a deliberate forgery, with supporting factual evidence, the Auctioneers may rescind the transaction. The burden of factual proof lies with purchaser, mere opinions will not satisfy. This benefit is not assignable.
8. If any buyer neglect or refuse to comply with the above conditions or any of them, his deposit money (if any) shall be forfeited, and the lot uncleared may, at the option of the Auctioneers, be resold without notice by public auction or private contract, and any loss occasioned by such re-sale together with all expenses attendant thereon, or arising under these conditions shall be paid for by the defaulter at this sale and be recoverable as and for liquidated damages. This condition is however without prejudice to the right of the Auctioneers to enforce the contract made at this sale if they think fit.
9. Any Notes for Purchasers and catalogue Glossaries, where used, will be construed as Conditions of Sale.
10. The Auctioneers shall be the sole Arbitrators in all matters of dispute relating to these conditions both as between the seller and the buyer and between the several bidders and buyers and their determination on all matters shall be final and binding on all parties concerned.

Persons attend the Auction Site at their own risk and neither the Vendor nor the Auctioneer will be responsible for any loss or damage to persons or property, in the absence of negligence on their behalf.

SITE LOCATION

Laxton Woodyard is approximately equidistant between the villages of Laxton and Harringworth. 'To the Sale' signs will be erected at these centres.

IMPORTANT NOTES FOR PURCHASERS

1. Payment: must be made in full immediately after the Auction. Accepted methods of payment are, a) Cash, b) Bankers Draft/Building Society Cheque, or c) Cheque (A letter of clearance from your Bank stating the Auctioneers, Saledate and guaranteed credit limit will be required; before the sale commences).
 2. Buyers Premium: is operated in accordance with Condition of Sale no. 2.
 3. VAT: is payable on all lots, except Cars. Other exceptions may be announced Saleday.
 4. Collection: can be made upon settlement of account. The Auctioneers Staff will be on-site Saleday until 4 pm and other times by arrangement.
 5. Refreshments will be available on-site.
 6. Lotted Lists will be available Saleday.
-

INVENTORY

VEHICLES

KUBOTA R.W.30 4 W/D EXCAVATOR with four in one bucket, back actor, Ditching Bucket, Dyking Bucket, 12", 18" & 24" Buckets, one owner.

1989 FORD 190 TRANSIT TIPPER 35 cwt. with aluminium body and tow bracket, F212 BAV (59,000 miles), Petrol MOT to March 1993.

1989 VW JETTA CAR, 16v, 47,500 miles one owner.

1962 COMMER (Mr.Softee Ice Cream Van), MOT tested and working, Regn.USK.679.

3 JAGUAR CARS (2 x J6 Series One + 1 x J6 Series Two) in need of restoration.

1966 FORDSON MAJOR TRACTOR with cab.

Two 2 Wheel TIPPING TRAILERS.

12ft.Low LOADING TRAILER with tandem axle and ramps.

Benford diesel DUMPER TRUCK

INVENTORY

SITE EQUIPMENT

Wooden SITE HUT

Tow Chain

Hiben & Watts DUMPY LEVEL
with Tripod and Staff

Set of Ranging Rods

Belle 1/2 bag CEMENT MIXER with
Briggs & Stratton 127 cc Petrol
Engine and Stand.

Benford 5 - 1/2 bag Diesel.
CEMENT MIXER and further 1/2 bag
bag diesel MIXER.

CLIPPER STONE CUTTER with Briggs
& Stratton 5hp petrol engine.

ABT CIRCULAR SAW BENCH with Honda
4 stroke petrol engine.

Lister 6.25 kva PORTABLE GENERATOR
with Lister twin cylinder diesel
engine.

PRESCO PORTALOO

RIDE-ON-MOWER 8hp 3speed
Commando 8.

Concrete Coal Bunker

Poulan Chain Saw

IBM 5632 10k COMPUTER with extra 37k
(Screen/Software, Desk -
Keyboard).

Barrell and Stand

3 Water Tanks

500 gallon Diesel Tank

Motorola 4500X PORTABLE TELEPHONE

SCAFFOLDING

c.200 Pudlogs

c.60 Scaffold Planks

Large quantity of Scaffold Clips

9 Acrow Jacks

3 pairs of Scaffold Trestles

25 'H' Frames

Tower Scaffold

c.100 21' Poles

c.50 8'/12' Poles

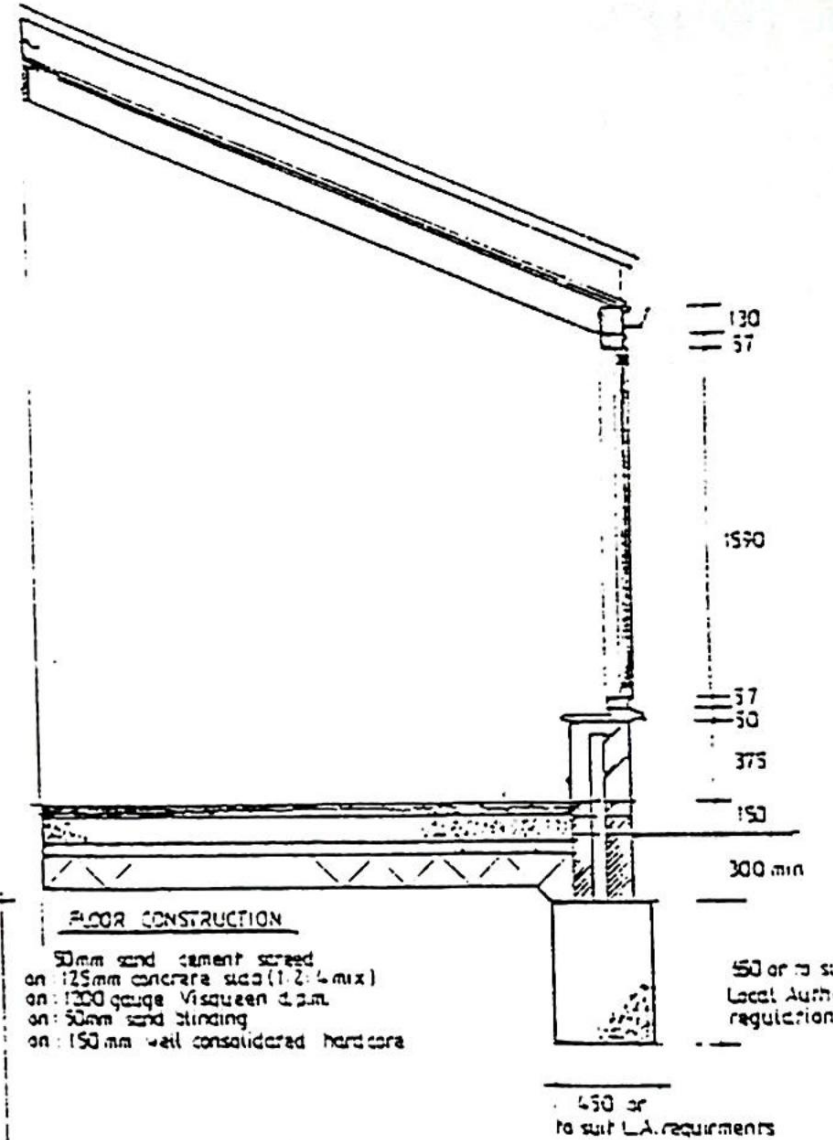
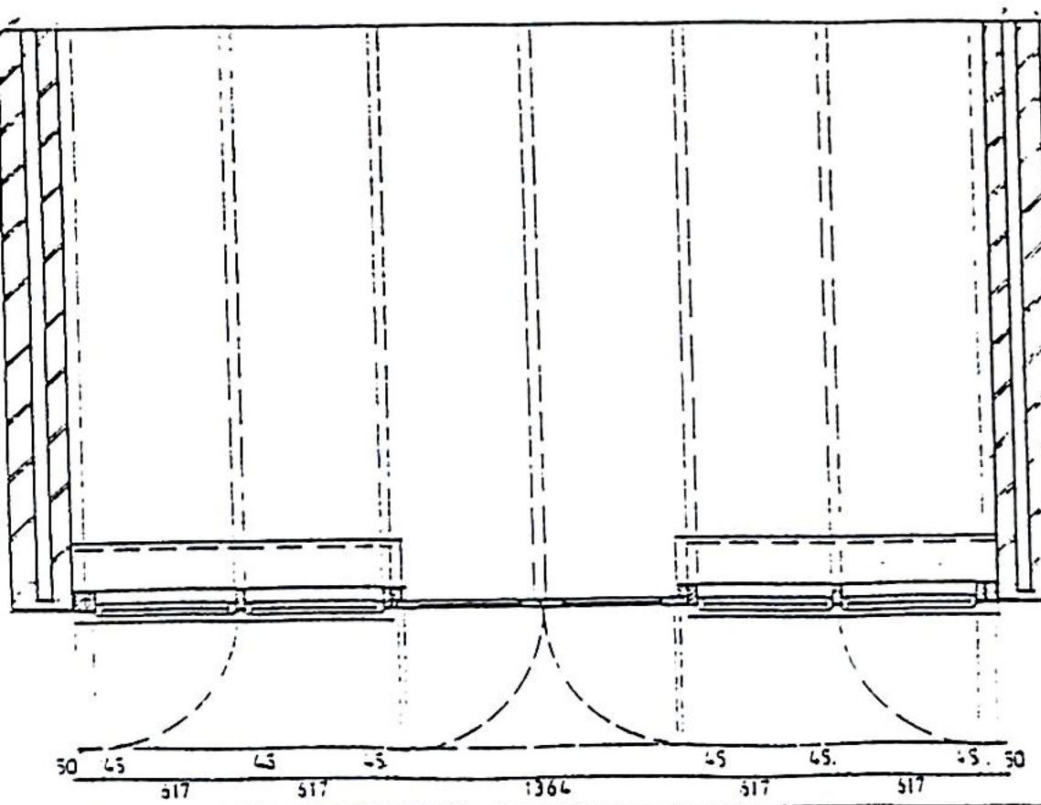
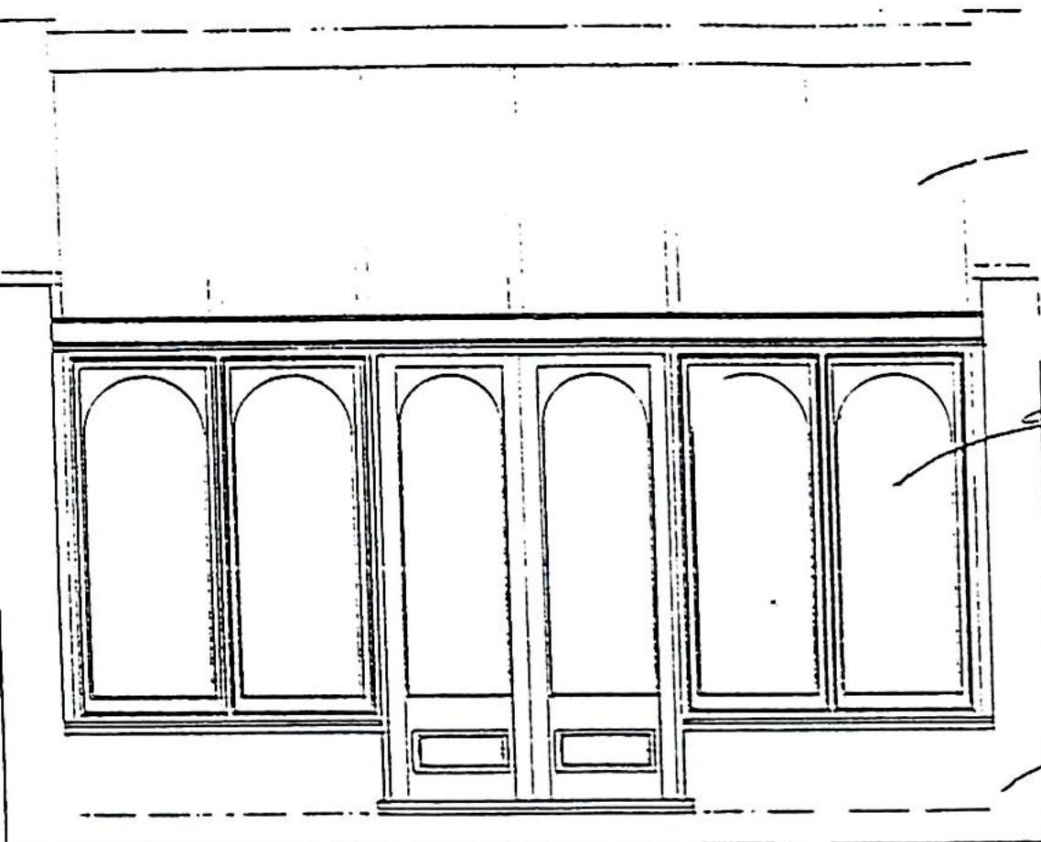
Good Qty.Scaffold Trellis
(including adjustable)

INVENTORY

MATERIALS

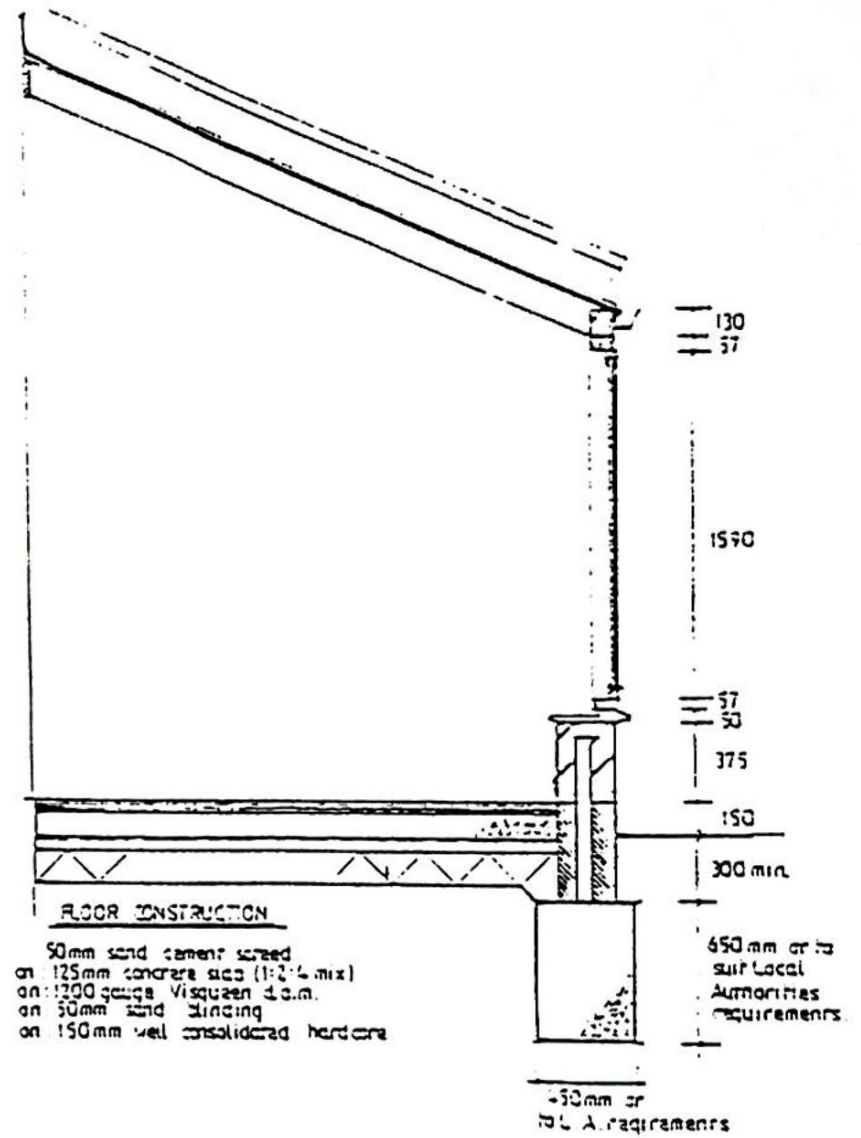
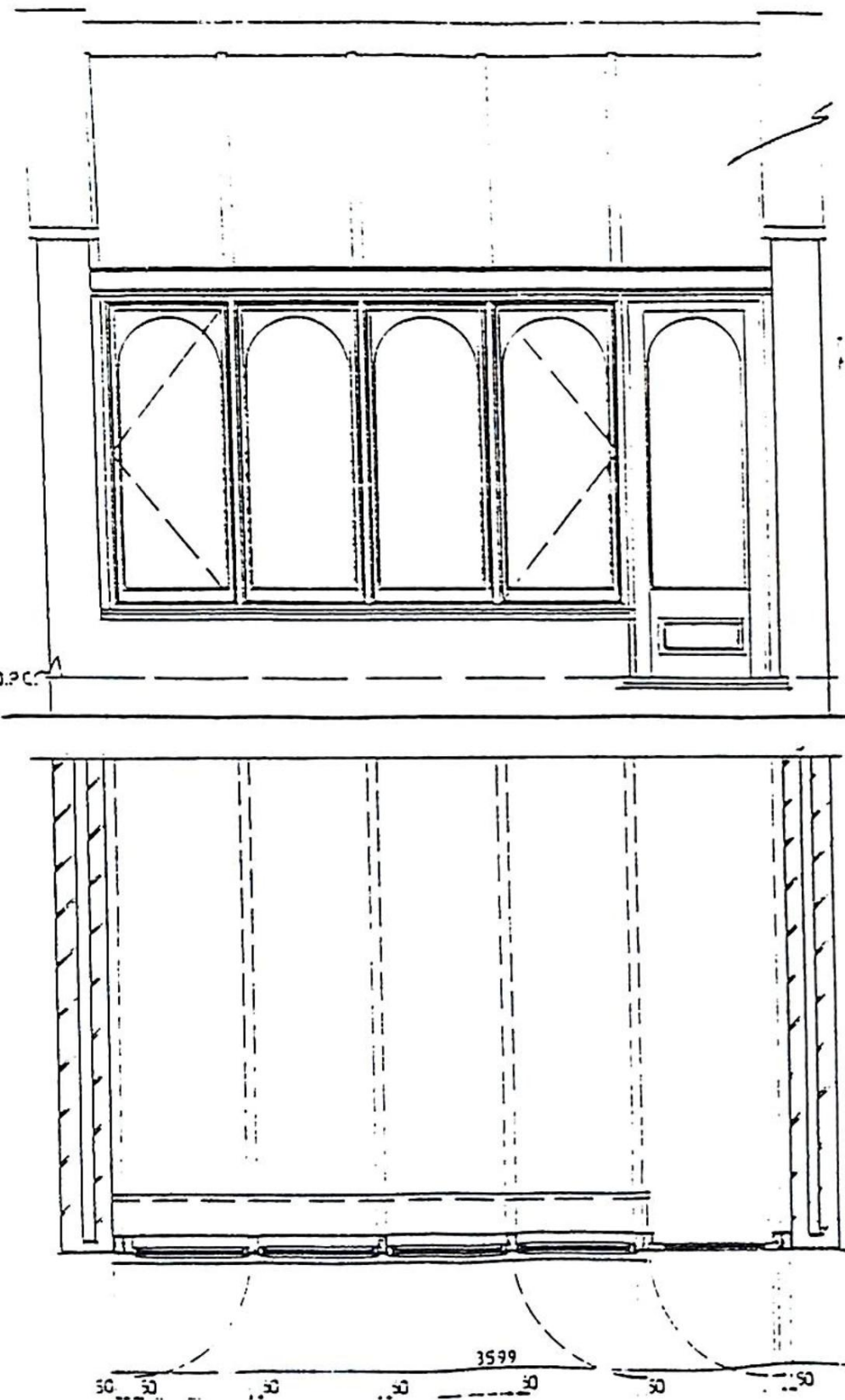
12 Oak Beams c.8'	Internal Lintels, plasterbed and eaves ventilators.
c.10 Oak beams c.18'	Qty. Bradstone Quoins
c.40 tonnes Building Stone incl. large quantity of cut stone quoins	3 Hayracks
20 tonnes of Victorian handcut 4" x 4" Courtyard Sets.	Qty. Wooden Toilet Seats
c.30 Railway Sleepers	2 Cast Iron Corner Mangers
c.100 Timber Joists incl. a large selection in Oak	1 Galvanized Corner Manger
Qty. of Joist Hangers	4 Ceramic Corner Mangers
9 RSJ's approx. 8" x 4" x 18ft.	3 Corner Mangers
6 Timber Roof Trusses 16" span	Osma Manhole and plastic drainage gutters etc.
1 Timber Roof Truss 19" span	Qty. Plastic Drainage Fittings
c.1000 Concrete & Clay Roofing Tiles (old and modern)	Qty. 1" Polystyrene Sheeting - flooring grade.
Pallet of Blue Saddleback Coping and Ridge Tiles	21 rolls of Hyload D.P.C.
c.800 of Staffs. Blue Bricks	China Washbasin.
c.1200 Red Hand Made Bricks	2 Stainless Steel Sinks.
c.600 Terracota Pavers	3 Royal Doulton Ceramic Sinks
Pallet of Blue Paving Bricks 6" x 12"	2 Belfast Sinks
c.40 tonnes Stone for landscaping.	New Sta-rite Swimming Pool Filter & large qty of polypipe pool fittings.
Rockery Stone	Sundry door and window frames
Qty. Wall Tiles	3 Velux Roof Lights, GGI 1, 5 & 7
Qty. Clay Drainage & water pipes	Pallet of Stone cills & treads.
3 Staddle stones	3 Worktops
Qty. Flue Liners	Gold plated Sanitary fittings
2 Pallets of Bradstone 'Collyweston' tiles	3 Pallets of Blocks
	1/2 Pallet New hand made coping bricks

CONSERVATORY TYPE 'A'



Two Victorian style frontages with swept heads in primed and undercoated timber, together with double glazed panels. In separate lots.

CONSERVATORY TYPE 'B'



Two Victorian style frontages with swept heads in primed and undercoated timber, together with double glazed panels. In separate lots.

F O R T H C O M I N G A U C T I O N S

T H E C O M P L E T E A U C T I O N S E R V I C E

Our next Fortnightly Sale of

ANTIQUE & MODERN HOUSEHOLD FURNITURE & EFFECTS

is on Wednesday 11th November 1992, at 10am

Viewing: Tuesday 10th 1pm to 5pm & Saleday 9am to 10am
Further entries invited.

Our Next Catalogued Sale of

ANTIQUES & FINE ART

is on Wednesday 25th November 1992, at 10am

FURNITURE: inc Victorian oak pull-out Dining Table (13'5"), Victorian mahogany wind-out Dining Table, Regency mahogany Tea Table, Victorian secretaire base, Jacobean carved oak Overmantel, 19thC. Armoire, Georgian yew Windsor Chair, early 18thC. Coffin, 2 Edw. Display Cabinets, Victorian Nursing Chair, Georgian and later Chests of drawers, Tables and Chairs, occasional pieces, etc. Also pine pieces, shipping goods and circa 60 LOTS OF ORIENTAL CARPETS AND RUGS.
JEWELLERY: excellent selection inc. 2.2 ct diamond solitaire ring, large emerald/diamond marquise ring, large opal and diamond ring, 3 Guild of Handicraft style rings, bullseye fob watch, opal ribbon pendant, emerald and diamond 3 stone ring, 3 sapphire and diamond rings, opal and diamond dress ring, 2 rose gold Alberts, 18ct curb chain (120g), in all c.80 lots.
CHINA: inc pieces of Imari, Satsuma, Dresden, Coalport, Davenport, Royal Worcester, Doulton, Spode, etc. SILVER & PLATE: inc 1905 & 1937 3 piece Teasets, 1937 Teapot, Victorian slice-cut Scent Bottle, 1836 tableforks, Victorian bon-bon dishes, punch ladles, etc. MISCELLANEA: inc Condoy Impressionist bronze, 1816 Sampler, Teddy Bears, Workboxes, 5 Violins, Wm IV Truncheon, Rural and Domestic bygones, metalware, card cases, 1818/37 Grantham Poll Books, Dolls, Victorian pram, unusual Sewing Machine, Pictures by Gudrun Sibbons, Cubley, etc.

Viewing: Sunday 22nd November 2pm to 5pm,
Tuesday 24th November 1pm to 7pm & Saleday 9am to 10am.

Catalogues £2 by post (pre-paid). Further quality entries are invited to complement the selection already at hand. Contact Colin Young ANAVA for entering items and enquiries.