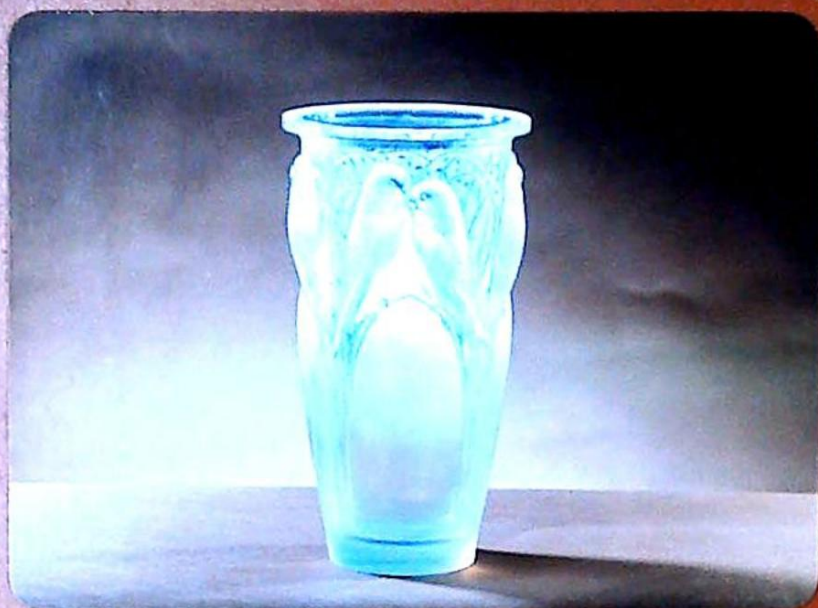


Established 1900

-GOLDINGS-



AUCTION SALE

OF

Antiques



THE GRANTHAM AUCTION ROOMS



## CONDITIONS OF SALE

1. The highest bidder shall be the buyer. The Auctioneers reserve the right of regulating the biddings; of rejecting any bid; and of bidding for, withdrawing, consolidating, dividing or altering the order of lots.
2. The purchase money for each lot with the usual commission of 10% plus VAT at the current rate shall be paid at the fall of the hammer (if required). Each lot at the fall of the hammer shall be at the sole risk and expense of the buyer, and shall be paid for and removed immediately after the conclusion of the sale, *but no lot shall become the property of the buyer, or be removable until paid for*, and if taken away in contravention of these conditions without an order for removal signed by the Auctioneers, they shall have power to seize the same by their servants or agents, or otherwise, or the Auctioneers may recover either the lot sold or the price thereof (at their option) by action at law.
3. No contra account of any description whatever will be allowed to the buyer as a set off, and payment for each Lot shall be made to the Auctioneers or their clerk only, and a buyer paying by cheque must give satisfactory references (if required).
4. For all purposes of this sale the Clerk of the Auctioneers shall be deemed to be the agent of both seller and buyer.
5. A bidder shall not be allowed to retract his bidding after the fall of the hammer, and he shall give up his full name and address if required. The Auctioneers will not recognise the transfer of any lot from one buyer to another, nor make any alteration in the sale book in respect thereof.
6. The Auctioneers are acting only as agents, and give no personal warranty as to the condition, quality or authenticity of any chattels offered for Auction. Any catalogue description is given merely as guide to purchasers, any description can be changed from the rostrum before the lot is sold. If a purchaser buys without previous inspection he will do so at his own risk.
7. Notwithstanding any other terms in these Conditions, if within 7 days of the sale a purchaser gives notice in writing that a lot is a deliberate forgery, with supporting factual evidence, the Auctioneers may rescind the transaction. The burden of factual proof lies with purchaser, mere opinions will not satisfy. This benefit is not assignable.
8. If any buyer neglect or refuse to comply with the above conditions or any of them, his deposit money (if any) shall be forfeited, and the lot uncleared may, at the option of the Auctioneers, be resold without notice by public auction or private contract, and any loss occasioned by such re-sale together with all expenses attendant thereon, or arising under these conditions shall be paid for by the defaulter at this sale and be recoverable as and for liquidated damages. This condition is however without prejudice to the right of the Auctioneers to enforce the contract made at this sale if they think fit.
9. Any Notes for Purchasers and catalogue Glossaries, where used, will be construed as Conditions of Sale.
10. The Auctioneers shall be the sole Arbitrators in all matters of dispute relating to these conditions both as between the seller and the buyer and between the several bidders and buyers and their determination on all matters shall be final and binding on all parties concerned.

Auctioneers: C. Robin Hall FRICS FAAV & Colin R. Young FNAVA

Established 1900

# **-GOLDINGS-**

**THE GRANTHAM AUCTION ROOMS**

Old Wharf Road, Grantham, Lincolnshire NG31 7AA  
Telephone: (0476) 65118 Fax: (0476) 590998

A  
COLLECTIVE  
AUCTION SALE  
of

**ANTIQUE & LATER**

**FURNITURE, SILVER & PLATE, GLASS, CERAMICS,  
BYGONES, PICTURES, COLLECTORS ITEMS,  
ORIENTAL RUGS AND JEWELLERY**

on Wednesday 17th November, 1993

Commencing at 10am

Viewing Times:

Sunday 14th: 2pm to 4pm  
Tuesday 16th: 1pm to 7pm  
Saleday: 9am to 10am

Cover Illustration: Lot 172



## IMPORTANT NOTES FOR PURCHASERS

1. **PAYMENT:** Must be made in full immediately after the Auction. The following methods of payment are acceptable.
  - a) Cash b) Bankers Draft c) Building Society Cheque
  - d) Cheques, accompanied by a valid card. For accounts above the stated card limit, we reserve the right to retain the goods until clearance is established.
2. **BUYERS PREMIUM:** of 10% + VAT is payable on all lots.
3. **REMOVAL OF PURCHASES:** Goods must be collected as soon as they are paid for, and in the Two Working Days following the sale. If goods are not collected on these days we reserve the right to charge £1 per lot per day thereafter.
4. **COMMISSION BIDS:** If you are unable to attend this or any of our future sales we will be pleased to bid on your behalf. We always purchase at the lowest possible price, subject to other bids and reserves.

All bids must be handed to the office on an official form. It remains the responsibility of prospective purchasers to contact GOLDINGS to confirm whether their bids have been successful.
5. **TELEPHONE BIDS:** There are inherent dangers with this practice, therefore all such arrangements are made entirely at the bidder's risk. Telephone bids will only be accepted if the lower catalogue estimate is £500 or above. For lots with a lower estimate below this figure Commission Bids Only will be accepted.
5. **SMOKING:** is not permitted in any part of the Saleroom.
6. **REFRESHMENTS:** will be available Saleday.
7. **ACCOUNT TRANSFERS:** will not be recognised after the sale. If any lots are purchased for another person, this must be declared at the fall of the hammer.

## GLOSSARY

- a) **Generally: 'As Found.'** (AF). This term indicates the lot has some damage. Its absence does not indicate that the lot is free of defect. All lots are SOLD AS SEEN.
- b) **Paintings: 'Signed, initialled, monogrammed.'** This refers to the present state of the work and is not an attribution.
- c) **Books and printed matter:** These items are not sold subject to collation and are not returnable once removed from the premises.
- d) **Silver & Jewellery:** Weights given are approximations given by basic instruments.
- e) **Estimates:** For intending purchasers we include in this catalogue the Auctioneers opinion of value. If no figures are given the value is less than £20.

## BYGONES & COLLECTORS ITEMS

1. A horse drawn MILK FLOAT. See illustration on centre pages.  
£400-600
2. A Victorian cast iron Bath with ball and claw feet. £40-60
3. A pair of rectangular LEAD PLANTERS. 23" long. £150-200
4. An early Hoover Vacuum Cleaner.
5. A 19thC circular COPPER. 36" dia. £200-300
6. A Cabin Trunk.
7. Sanderson floral print 61" drop curtains, two 63" wide, one 45" wide. (3)
8. A 19thC bronze CAULDRON, 12" dia. £50-80
9. An M.D.S. Engineers Level and tripod, 1950. £30-50
10. An Ashton copper Fire Extinguisher. £35-45.
11. Old hand Tools.
12. Three stoneware Pots.
13. Two earthenware Pancheons.
14. An old Yoke.
15. A pine Collector's Chest. £40-50.
16. A leather case.
17. A Victorian Curtain Pole.
18. An EPIDIOSCOPE by Ross of London. No 130449. £50-80
19. Two leather Suitcases.
20. Four old Whicker Baskets. £25-40
21. A large Bell. £40-60
22. A Victorian mahogany BOOT JACK. £50-80
23. A pair of Riding Boots with stretchers by Rowell & Sons, Melton Mowbray.
24. A pair of Riding Boots with stretchers by Rowell & Sons, Melton Mowbray.
25. A pair of Riding Boots with stretchers by Rowell & Son, Melton Mowbray.
26. An African tribal Drum, bow and 2 spears.
27. Two earthenware Pancheons. £20-30
28. A Smith Premier Typewriter.
29. A Sampler Picture.
30. An old enamel Stallholders Lamp. £40-60
31. Five lawn Bowls. £25-40.
32. Six ash Wickets and three balls.
33. Three sets of brass Stair Rods. £25-35
34. A large Khukri Knife.
35. An old Carriage Lamp and a copper Jug.
36. Two Victorian cast iron Bakehouse Clocks.
37. An ORGANETTA with two music rolls. £70-90
38. A pair of Carriage Lamps. £25-40
39. A 19thC leather cylindrical CONTAINER with handle and royal coat of arms. 21" high. £60-80
40. A 19thC Wool Winder. (AF)
41. A painted cast iron Butchers' Display Model. £30-40
42. Copper jug, etc.
43. An early Swan electric Toaster.
44. A Sampler Picture.



45. A pokerwork Tray.
46. A Chinese Stay Bust.
47. Six Winnie the Pooh Pictures.
48. A Victorian rosewood Work Box. £25-35
49. A brass and copper Pentray and Inkwell. £25-35
50. A Victorian mahogany Tea Caddy of sarcophagus form. £20-30
51. A 19thC Japanese red lacquer Tea Caddy.
52. Two Victorian papier mache Trays.
53. A Victorian walnut Writing Box. (AF)
54. A Victorian rosewood Tea Caddy of sarcophagus form, inlaid with mother of pearl. £40-60
55. A Victorian brassbound rosewood Work Box. (AF)
56. Brassware; toasting fork, pierced box, etc.
57. Two cases of fishing flys, three reels, bag, etc. £30-40
58. A Milbro F.79S fishing rod and a split cane example by Foster Bros, Ashbourne. £25-40
59. A Hardy Bros 4 1/2" Fishing Reel, bronzed brass with ivory handle, oval logo and rod-in-hand mark. £30-40
60. A leather Jemmy and two cases.
61. An iron Bull leader.
62. A 1940's Hammond electric Organ. £70-90
63. An old Tennis Racquet.
64. A Star Model Yacht, 18" long.
65. A painted firescreen.
66. An Indian brass Tray with scalloped rim.
67. An Islamic blackened brass Tray.
68. Two Paisley Bedspreads. £25-40
69. An enamel Flour Bin.
70. A Pond Yacht, 10" long.
71. Part Meccano set, games, etc.
72. Bar skittles, bagatelle and two kaleidoscopes.
73. A tinsplate Mickey's Tug Boat and Drum.
74. A leather Flying Helmet and goggles.
75. Blow Football and other games.
76. Tinsplate crane, steam engine, Mark Hesse dynamobil, etc.
77. Dominoes, wooden blocks and old tins.
78. Two cameras and a pair of binoculars.
79. A small Sampler and photograph album. £20-30
80. Plated cutlery, brass tray, etc.
81. Beer taps, blow lamps, and fender.
82. Two pine boxes.
83. A Skeleton Force Pump. £80-100
84. A good selection of riding Tack.
85. Two bird shape Condiment Sets.
86. A small oriental Doll.
- 87 to 90 Spare Lots.
91. Five fountain pens and propelling pencil.
92. A Victorian satin lined Sewing Case, mother of pearl handled fittings and two silver thimbles. £25-40.
93. A Victorian walnut miniature Casket. £20-30
94. A Mickey Mouse Toy Lantern Outfit with full colour slides including Snow White.

95. An electric fan and motor Construction Outfit and the Kay Electrical Outfit.
96. A Chad Valley Tap-Tap with hammer and nails.
97. A Mickey Mouse Circus Train by Wells of London.
98. A clockwork tinplate Truck with 2 trailers.
99. The Four Bears, a boxed shooting game.
100. A Wells of London clockwork tinplate Model Car with electric lights, boxed 15".
101. Two tinplate clockwork Cats chasing mice.
102. A German clockwork tinplate Railway Turntable Toy.
103. Circa 60 lead Farm Animals and Figures, including Britains. £80-120
104. A Victorian desk Calendar.
105. A blue john EGG. £60-80
106. A 1935 Silver Jubilee brass Tray and a needlework case.
- 107 to 120 Spare Lots.
127. A first period Worcester black and white BOWL, open crescent mark. 6" diameter. £30-50
128. A Warwick part Tea Service. £40-60
129. Doulton Jug, Jasperware lidded dish, etc.
130. Victorian jug, oblong dish, etc.
131. Ornaments, etc. (3 trays)
132. 1897 Diamond Jubilee Plate.
133. A pair of Victorian crystal Decanters. £20-30
134. A Royal Doulton FIGURE, Cobbler, HN1706, 8". £60-90
135. A red and green iridescent Vase (AF). £20-30
136. Seven pieces of Wedgwood Jasperware. £20-30
137. A Spode Bowl and two handled cup. £20-30
138. A Shelley three piece TEASET with a gilt maroon border, and two plates. £50-80
139. Assorted blue and white Chinaware. £20-40
140. Lustre goblet, Derby duck, etc.
141. A Satsuma Vase, peony kobe.
142. A 19thC Spode Oriental Sports pattern Meatplate and 2 plates. £50-80
143. Three decorative plates.
144. A Victorian cranberry glass Jug, 5". £30-50
145. A Victorian cranberry glass Jug, 5" £30-50.
146. A Victorian cranberry glass JUG, 7". £50-80
147. A cottage 3 piece Tea Set. £20-30

## GLASS & CERAMICS

121. A cut glass Bowl and four dishes.
122. A Chinese redware Teapot.
123. A Copeland Spode's Italian Fruitbowl and side dish.
124. Four Minton blue and white Humber pattern Plates.
125. Four Wedgwood greenleaf Plates.
126. An Etruscan black and white 17" Plate. £25-40
147. A cottage 3 piece Tea Set. £20-30



148. A large Cheese Dish and 2 Meatplates.
149. A Carltonware dish, two jugs and bottle.
150. Two ginger jars and other china.
151. Two Carltonware gilt Leaf Dishes.
152. Eight decorative Plates.
153. Paperweight, glasses, etc.
154. A blue and white Bowl.
155. Six Shelley Cups and Saucers of floral design. £50-80
156. A blue ground TOILET SET with fruit decoration. £60-80
157. A 19thC Moore circular Dish with gilt feet. £20-30
158. A Victorian cut crystal LUSTRE VASE. £35-50
159. Six Victorian WINE GLASSES with amethyst bowls. £50-80
160. Five German Jars, rosebud design.
161. Two Tureens with gilt blue trim.
162. A pair of Victorian blue and white Tureens and a willow pattern Meatplate.
163. A Victorian veined Meatplate. £20-30.
164. A Tureen and Plates with a gilt blue border. £40-60
165. A Victorian bisque Group of boy and girl. £40-60
166. **An English salt-glazed stoneware MODEL OF HOUSE** with bird to ridge. 10" high. **£150-200**
167. A crestedware Zeppelin.
168. A Paperweight.
169. A Belleek trunk shape Vase. £25-40
170. Two small Belleek shell Jugs. £25-40

171. An 18thC blue and white Leaf Dish. £20-30

172. **Ceylan, a Lalique opalescent glass VASE** of tapering cylindrical form moulded in relief with pairs of budgerigars, wheelcut R. Lalique, France No.905. 9½" high. See cover illustration. **£1400-1800**

173. Two large Vases, 1950's. £35-45

174 to 180 Spare Lots.

## PRINTED ITEMS

181. Postcards: 16 Mabel Lucie Attwell, silks, etc. £35-50
182. Cigarette and Tea Cards, etc.
183. A large album of Postcards. £25-40
184. Ten silk Postcards. £25-40
185. Ten Grantham Postcards.
186. Ten Grantham Postcards.
187. Ten Grantham Postcards.
188. Ten Grantham Postcards.
189. 1906 Postcard of Arthur Priestley MP for Grantham.
190. An essay dated 1900 - Ordered to the Front.
191. Lois Bates. Kindergarten Guide, Longmans 1906.
192. Assorted books on Collecting.
193. Lewis Carroll. The Hunting of the Snark, Macmillan 1876, gilt edged.
194. International Library of Famous Literature, 20 vols. leather spined, in an oak case. £30-50
195. An album of world Stamps and loose examples.
196. Circa 1000 assorted Foreign and GB stamps.



197. Circa 1500 assorted Foreign and GB stamps.

198 to 200 Spare Lots.

## JEWELLERY & BIJOUTERIE

201. A moonstone and white metal BAR BROOCH.

202. A George III bronze commemorative Medal, 25 October 1810 and a Louisiana Purchase Exposition bronze Medal 1904, together with script. £20-30

203. A Victorian rose gold Fob Watch Key.

204. A 9ct rose gold mounted amber Cigar Holder.

205. A 15ct gold Diamond set BAR BROOCH. £40-60

206. A 9ct gold buckle design SCARF CLIP. £30-40

207. Four Oriental gold CHARMS. £80-120

208. A 9ct gold Sapphire & Diamond 1/2 Eternity RING. £30-40

209. A 9ct gold & enamel Naval Sword BROOCH. £40-60

210. Three 9ct gold eternity Rings. £25-35

211. Assorted 9ct gold CHARMS. £80-100

212. Two Pairs of gold Earrings, gold chain, gold chain & heart pendant. £25-35

213. A 9ct gold Cameo Ring. £25-35

214. Three assorted dress Rings (2 AF). £20-30

215. A silver Fob Watch and silver Locket. £25-40

216. Costume Jewellery, silver thimble, etc.

217. A silver Bracelet.

218. An oval sapphire RING encircled by diamonds, on an 18ct white gold shank. £200-300

219. An oval topaz RING encircled by diamonds on a 9ct shank. £100-150

220. An 18ct gold BROOCH set with garnets (AF). £20-30

**221. A fine oval CAMEO BROOCH depicting a wine god, in a 9ct gold mount. 2 1/2". £300-400**

222. A Chinese porcelain Snuff Bottle.

223. A Chinese embossed glazed porcelain Snuff Bottle depicting a dragon.

224. A Chinese cloisonne enamelled metal Baluster Vase.

225. A Chinese internally painted rock crystal Snuff Bottle depicting children in a garden. £20-30

226. An 18ct white gold 3 stone TWIST RING. £120-150

227. An 18ct gold and platinum, ruby and diamond RING. £100-150

228. A 9ct white gold 5 stone diamond RING. £150-200

229. An 18ct diamond PENDANT on a 9ct Chain. £80-120

230. A brass Seal.

231. A pair of 9ct gold Cufflinks. Chester 1931.

232. A 9ct gold 5 stone diamond twist RING. £80-100

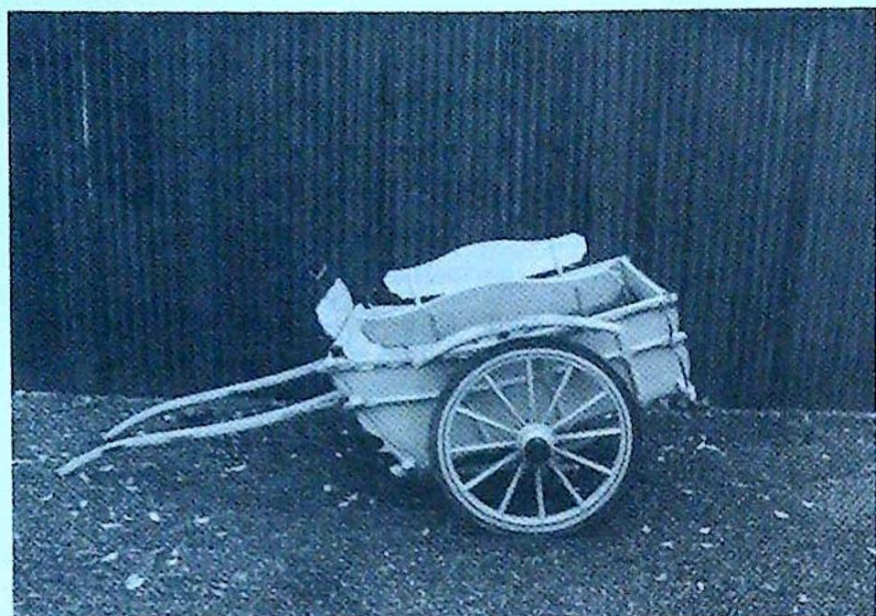
233. An antique diamond CORNUCOPIA BROOCH. £150-200

234. An old agate clasp and another.

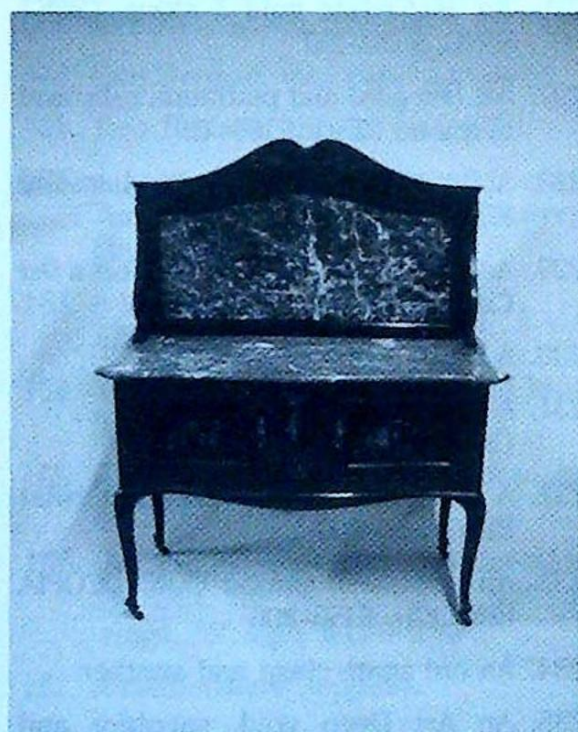
235. An Art Deco gold, sapphire and diamond BROOCH. £120-180

236. A 9ct gold Charm Bracelet with three 9ct charms.





Lot 1.



Lot 469.



Lot 469.





Lots 435 and 436.



Lot 437.



237. A 15ct gold aquamarine and pearl PENDANT. £150-200
238. An 18ct gold ruby and diamond RING. Chester 1906. £70-90
239. A Victorian 12ct gold garnet RING. Birmingham 1869. £60-80
240. An 18ct gold sapphire and diamond BOAT SHAPE RING. £250-350
241. A 15ct gold Bar Brooch with initial 'C' in diamonds. £40-50
242. A gold Stickpin.
243. A 9ct gold garnet, turquoise and pearl HORSESHOE RING. £60-80
244. A Victorian 9ct gold turquoise ring. Birmingham 1900.
245. An 18ct gold diamond GYPSY RING. Birmingham 1918. £70-90
246. A heart-shaped turquoise Stickpin.
247. A 9ct rose gold and coral child's Bracelet.
248. A turquoise and pearl BROOCH. £80-120
249. A 9ct gold Scarf Clip.
250. A Victorian 9ct gold Memorial Locket, dated November 26th, 1851. £25-40
251. An 18ct gold Jockey Brooch. £40-60
252. A silver and amethyst Guard Chain. £40-60
253. A pair of jet Earrings.
254. A pair of amber Earrings.
255. An aventurine Necklace. £80-100
256. A butterfly wing Brooch.
257. An old silver Pendant and Chain.
258. An Edwardian 18ct gold sapphire and diamond RING. Birmingham 1905. £100-150
259. An 18ct gold 5 stone sapphire and diamond RING. Birmingham 1922. £80-100
260. A 9ct gold sapphire GYPSY RING. £50-70
261. A 15ct gold ruby and pearl RING. £50-70
262. An 18ct gold ruby and diamond GYPSY RING. £70-90
263. A 15ct gold sapphire and diamond STICKPIN. £60-80
264. An 18ct gold 3 stone sapphire and diamond TWIST RING. £50-70
265. An Art Deco 18ct gold and platinum diamond Twist Ring. £40-60
266. A Victorian 9ct gold FOB. £120-150
267. A silver Cameo Pendant and chain.
268. A two colour gold CHAIN. £120-180
269. A rose gold Victorian Locket. £30-40
270. An Art Deco 18ct white gold sapphire and diamond PENDANT AND CHAIN. £150-200
271. An antique gold, diamond and enamel NECKLACE. £240-300
272. An 18ct gold and silver, aquamarine and diamond PENDANT. £120-180
273. An Edwardian 9ct gold turquoise and pearl BRACELET. £150-200
274. A 9ct gold BRACELET set with sapphires and diamonds. £250-350
275. An 18ct gold and platinum diamond SOLITAIRE RING. £70-90
276. An 18ct gold 2 stone diamond RING. £100-150
277. An 18ct gold diamond Cluster Ring. £40-50
278. An Art Deco 18ct gold and platinum diamond CLUSTER RING. £60-80



279. A coral and pearl RING. £70-90
280. A 15ct gold ruby, diamond and pearl RING. £80-120
281. A 15ct gold aquamarine and pearl STICKPIN. £60-80
282. A gold Guard Chain, 16 grammes. £180-250
283. An 18ct white gold 3 stone diamond RING. £80-100
284. A silver BANGLE set with blue and white sapphires. £80-100
285. A pair of 9ct gold drop chain EARRINGS each with a single amethyst. £50-70
286. A Victorian pinchbeck Bracelet with a turquoise clasp. £20-30
287. A 9ct rose gold ALBERT having two curb chains. 15 grammes. £120-180
288. A rosewood Snuff Box, a silver and coral Necklet and 2 filigree brooches. £30-40
289. Pearl necklets, silver pieces, etc.
- 290 to 300 Spare Lots.

## NETSUKE

301. A signed Japanese hardwood Netsuke, a study of an apprentice Buddhist monk knelt at prayer.
302. A Japanese mother-of-pearl Sumada School Netsuke, a well decorated study of a flat fish.
303. A signed Chinese circular Seal Box (Inro) corded and attached to a signed hardwood Netsuke, a study of a man knelt beside a sack upon which sits a monkey.
304. A signed Japanese Netsuke, a study of a youth in a fine detailed costume holding a broom. £30-40
305. A signed Japanese Netsuke a study of a Geisha in finely decorated kimono kneeling in waiting attendance. £30-40
306. A signed Japanese Cabinet Netsuke, a study of an armed Samauri walking in voluptuous kimono. £30-40

## CLOCKS & WATCHES

307. A silver Pocketwatch (AF).
308. An American yellow metal Gents Wristwatch. £30-40.
309. A 1920's blue enamel FOB WATCH with a Swiss movement, on a matching silver and enamel NECKLACE. £200-300
310. A silver and blue enamel CLOCK, 3" high. Birmingham 1924. £100-150
311. A silver cased Waltham gentleman's Pocketwatch and a Railway Time Keeper. £20-30
312. A George III verge POCKETWATCH in a silver pair-case, with plain white enamel dial and gilt fusee movement, signed Thos Boyfield, Melton, No 85. £150-200
313. A repeating brass Carriage Clock. (AF) £50-80
314. A Victorian walnut Vienna regulator WALL CLOCK. £250-350
315. A Victorian mahogany circular WALL CLOCK with fusee movement and painted face by W Gardner, Manchester. £200-300
- 316 to 320. Spare Lots

## SHOTGUNS

321. A 12 bore side by side SHOTGUN by Westley Richard. Serial No. 22702. £100-150



322. A 12 bore single barrel ejector SHOTGUN by Argyle. Serial No. 23771. £50-80

323. A 12 bore Spanish side by side SHOTGUN. Serial No 253176. £50-70

324 to 325 Spare Lots.

## MUSICAL INSTRUMENTS

326. A VIOLIN bearing label Nicolaus Amatus fecit in Cremona 1636, cased with bow. 14". £100-150

327. A VIOLIN bearing label Sold at Longman & Co, Music Shop No 26 Cheapside, London. 14" cased with bow.

328. A VIOLIN by Giovanni Croix a Paris 1920. 14", cased with bow.

329. A Ukelale.

330. Spare Lot.

## SILVER & PLATED WARE

331. Six Georgian silver Coffee Spoons. £25-35

332. Eleven silver Spoons and fork. £25-40

333. A cased set of six silver Teaspoons and Sugar Nips. Birmingham Assay. £20-30

334. A set of six Edwardian silver handled Butter Knives, in a satin lined case. Maker H.W. Sheffield 1907. £30-40

335. An engine turned silver Cigarette Case. Birmingham 1932.

336. An engine turned silver Cigarette Case. Birmingham 1941. 6oz. £25-35

337. An Edwardian CARVERY SET with silver banded bone handles and a pair of silver rests. £40-60

338. A George VI silver TEAPOT of castelated octagonal form. 19oz all in. £180-250

339. A pair of Edwardian silver cauldron shape SALTS, cased, London 1901; two salt spoons. 5oz. £80-100

340. A Sheffield plate MUSTARD POT. £30-40

341. A Victorian silver pierced and embossed Bon Bon Dish. Birmingham 1897. £30-40

342. A silver plated Sugar Helmet.

343. An ornate silver plated Syphon Holder by Walker & Hall. £30-50

344. A silver plated oval Tray and two shallow bowls.

345. A circular electroplate Cruet Stand and four bottles. £70-90

346. Three Sheffield plate Mugs stamped Askew and Oldham, both of Nottingham. £25-35

347. Silver plated cigarette box, bowl and cutlery.

348. Two EPBM Teapots. £25-40

349 to 350. Spare Lots.

## PICTURES

351. A colour print of Horse and Jockey.

352. A Faithful Guardian, colour print.

353. A pair of riverside scene colour prints.

354. An 1815 engraving a country gentleman and horse.

355. A small watercolour Cottage Scene.

356. A colour print of George V. £20-30

357. Six prints after Henry Moore. £20-30

358. A set of four colour HUNTING PRINTS. £50-80



359. A Coaching Scene oleograph.
360. A set of four hand coloured engravings after H Alken. 'Duck shooting', 'Snipe shooting', 'Partridge shooting', and 'Pheasant shooting'. £40-60
361. A set of four hand coloured Fishing Lithographs 'Mr Briggs and his doings'. £30-40
362. A R Ansell. Looe River, watercolour, bears signature. 14" x 18".
363. J Cross. A pair of still lifes, fruit, oil-on-canvas, 6" x 9". £30-40
364. 19thC English School. A primitive painting of huntsmen and hounds in the foreground and Belvoir Castle in the background, oil on metal, unsigned, framed. 7" x 10". £350-450
365. The Death of a Dinosaur; a limited edition print bearing the signatures of many of the DAMBUSTERS. £250-300
366. Prelude; a limited edition print bearing the signatures of many of the DAMBUSTERS. £250-300
367. 19thC English School. A pair of oil landscapes. £40-60
368. C R Stock. Two triple engravings after E A Douglas, Horse Racing scenes. £30-40
369. Early 20thC unframed colour prints.
370. A colour print entitled 'All That Was Left of Them', Boer War. £30-40
371. A pen and ink sketch of a boy and mermaid signed T H Woolgrove.
372. A landscape watercolour initialled H.B.B.. £40-60
373. A maple framed print of Gladstone. £40-60
374. A large gilt framed religious print.
- 375 to 380. Spare Lots.

## ORIENTAL RUGS

381. A Caucasian RUG. 81" x 51". £250-300
382. An Azarbijan RUG. 97" x 53". £280-350
383. A Caucasian RUG. 81" x 51". £250-300
384. A floral pattern Indian Carpet. £30-40
385. A Belouch Rug. 79" x 38".
386. A Kurdish Rug. 79" x 39".
- 387 to 390. Spare Lots.

## FURNITURE

391. A George III oak TEA TABLE with folding top, plain freeze and legs. £70-100
392. A Victorian Step Commode. £20-30
393. A 1920's oak BUREAU. £80-100
394. A pair of Victorian elm lathback Kitchen Chairs. £20-30
395. An early Victorian oak Side Table with drawer. £40-60
396. A George III elm country Chair in the Hepplewhite manner. £25-40
397. A George III elm Country Chair. £30-40
398. A mid 17thC oak gateleg DINING TABLE. 36" x 42" max. £150-200
399. A 17thC oak 2 panel COFFER, adapted from a larger version. £60-90
400. A pair of Victorian balloonback Bedroom Chairs.
401. A set of four Victorian lathback KITCHEN CHAIRS. £100-150.



- 402. An Edwardian wind out DINING TABLE** and two further leaves. **£500-700**
403. A Victorian mahogany WHATNOT, the four graduated semi circular tiers connected by barleytwist pillars. £200-300
404. An Edwardian oak QUARTETTO OF TABLES. £280-350
405. A carved Standard Lamp. £35-45
406. Two Victorian lathback Kitchen Chairs. £20-30
407. An Edwardian mahogany SALON CHAIR inlaid with neo-classical motifs. £80-120
408. An Edwardian carved oak ladies OPEN ARMCHAIR, upholstered in maroon velvet. £80-100
409. A 20thC Chinese four fold SCREEN richly decorated with two peacocks and peonies. 36" high. £50-70
410. A pink Lloyd Loom linen basket.
411. A drop-arm Sofa.
412. A glass top brass Coffee Table.
413. A pair of Victorian mahogany DINING CHAIRS with balloon-backs and serpentine seats. £40-60
414. A George III oak gateleg DINING TABLE. 39" x 56" max. £50-80
415. A pair of Victorian elm spindleback Kitchen Chairs. £25-40
416. A pair of Edwardian mahogany Bedroom Chairs upholstered in gold dralon. £20-30
417. A Victorian elm spindleback Kitchen Chair.
418. Two Edwardian Chairs.
419. A pair of Victorian rosewood barback DINING CHAIRS. £40-60
420. A 1960's oak DINING TABLE with barleytwist legs. £50-80
421. A pair of upholstered WING ARMCHAIRS with pouffe. £40-60
422. A 1920's oak Billiard Cue Stand. £40-60
423. An oak NEST OF TABLES. £50-70
424. A Victorian Chiffonier Base. £50-70
425. A Victorian elm circular Stool. £20-30
426. A Victorian oak three tier DUMB WAITER. 24" wide. £120-180
427. A 1920's oak Filing Cabinet with tambour top. £40-50
428. An Edwardian satinwood SIDE TABLE. £40-60
429. An Edwardian inlaid mahogany JARDINIERE STAND. £60-90
430. A Regency ironwork GARDEN SEAT with a spiral sprung circular seat and back. £100-150
431. A Victorian mahogany PEDESTAL TABLE with moulded edge top and tripod base. £100-150
432. A William IV mahogany HALL CHAIR with oval back. £80-100
- 433. A quality walnut WORK TABLE** with a fitted shaped top, over four turned pillars, on four Regency style splay legs with brass toes and castors. **£400-600**
434. A Victorian walnut PIER CABINET with a single glazed door. 33" wide. £200-300
435. A Regency mahogany SOFA TABLE, the plain moulded top having two fall flaps, frieze drawer with Prince of Wales feathers' ring handle, rectangular pillars and fluted sabre legs, brass toes and castors. 20" x 36". £300-400



436. A Queen Anne style walnut CHEST of three drawers with brass drop handles and bracket feet. 23" wide 28" high. £150-200
437. An early Victorian flamed mahogany veneer CHIFFONIER 40" wide. See illustration on centre pages. £250-350
438. A Georgian style mahogany serpentine CHEST of four graduated drawers, swan neck handles and bracket feet. 37" wide. £400-500
439. A Jacobean style oak SIDE TABLE with carved frieze drawers, pillar supports, stretcher and scroll feet. £150-200
440. A Victorian carved mahogany SERVING TABLE with marble top, gadrooned frieze, cabriole legs and ball and claw feet. 18" x 48". £200-300
441. An Edwardian oak windout DINING TABLE with turned and reeded legs, two further leaves, 42" x 71" max. £400-600
442. A Georgian style mahogany swivel OPEN ARMCHAIR upholstered in light green buttoned leather. £80-100
443. Four 19thC Ibex spindleback KITCHEN CHAIRS. £80-100
444. A Victorian bleached mahogany CHEST of 2 short and 3 long graduated drawers. 38" wide. £120-180
445. An Edwardian oak HALLSTAND. £150-200
446. A Victorian gilt composition OVERMANTEL MIRROR 45" high 36" wide. £50-80
447. Two Victorian cast iron Bedroom Chimney Pieces. £20-30
448. A pair of Victorian cast iron GARDEN SEAT ENDS. £40-60
449. A late 19thC walnut ORGAN by Bell Organ & Piano Co., Canada. £50-80
450. Spare Lot.
451. Two pairs of Victorian mahogany Pillars and cover. £20-30
452. A Chippendale style mahogany PIER GLASS with gilt ho-ho bird, late 19thC. £60-90
453. A large Victorian pine DRESSER BASE. £120-180
454. An Edwardian inlaid mahogany Wardrobe. (AF) £40-60
455. An Edwardian satinwood WARDROBE with mirror door and drawer base. £40-60
456. An Edwardian CHINA DISPLAY CABINET, two glazed doors with crossed astragals, on cabriole legs. 34" wide. £200-300
457. An early 20thC oak DRESSER with platerack top, two frieze drawers, turned legs and pot board. £200-300
458. An Edwardian satinwood WARDROBE with mirror door and drawer base and a DRESSING CHEST. £150-200
459. An Edwardian satinwood DRESSING CHEST. £80-120
460. An Edwardian light ash WARDROBE with mirror door and drawer base. £80-120
461. A late Victorian mahogany veneer CHIFFONIER. 41" wide. £150-200
462. A Victorian mahogany WARDROBE with mirror door and drawer base. 46" wide.
463. A Victorian mahogany WASHSTAND with a shaped marble top and carved cabriole legs. £120-180



464. A late Victorian walnut **WARDROBE** with mirror door and drawer base and a **DRESSING CHEST**. £300-400
465. A Victorian banded mahogany bowfront **CHEST** of 2 short and 2 long graduated drawers, with oval brass handles and splay feet. 40" wide. £300-400
466. An early 18thC Continental panelled oak **COFFER** with hinged lid, 9 rectangular panels, on later nulled feet. 52" wide, 36" high, 25" deep. £300-500
467. A Regency giltwood and gesso porthole **WALL MIRROR** with eagle pediment, convex glass and leaf adornment to base. 40" high. £350-450
468. A Victorian painted pine traytop **KNEEHOLE DESK** with marbled porcelain handles. 22" x 44". £400-500
469. A fine Edwardian mahogany **DRESSING TABLE AND WASHSTAND**, string inlaid and painted with floral and classical motifs. Together with two wardrobe doors. *See illustration on centre pages.* £500-700
470. A George III oak **BUREAU**, the fall flap concealing drawers and pigeon holes, over four graduated drawers, on bracket feet, later knob handles. 39" wide. £400-600
471. A glazed two door Bookcase.
472. A George III mahogany **HANGING CORNER CABINET**. 46" wide. £350-450

END OF SALE

---



Established 1900

# -GOLDINGS-

Chartered Surveyors, Auctioneers, Valuers & Estate Agents  
Residential, Commercial, Agricultural, Antiques & Fine Art

45 High Street, Grantham, NG31 6NE  
Telephone: 0476 · 590211

## PROFESSIONAL SERVICES FOR



### RESIDENTIAL

---

We have a department headed by Chartered Surveyors to undertake valuation and sale of all types of property from Castles to Town Houses. Surveys, Housebuyers Reports, Mortgage, Insurance and Probate Valuations to individual requirements.



### COMMERCIAL

---

*Property*; Dealing with the survey of Shops, Offices and Factories. Sale, Valuation and Rent Reviews, Lease negotiations and Rent Arbitration for the landlord and tenant.

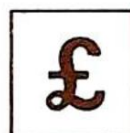
*Plant, Machinery & Assets*; Sales for Receivers, Liquidators, High Court & County Court. Auction Sales on Site prepared for private and public clients alike.



### AGRICULTURAL

---

Our Senior Partner has wide experience in the sale and valuation of Agricultural Properties, conducting Farm Sales and Valuation of Live and Dead Farming Stock for dissolution, Probate and other matters. Other areas covered include Rent Reviews, Development Land reports and Annual Stocktaking Valuations.



### FINANCIAL SERVICES

---

Our Experienced Consultant is available to advise on all matters concerning Finance, Mortgages, Insurance, Investment, Planning and Pensions.



### PROPERTY MANAGEMENT

---

Personal service and attention to detail ensures that our management team exploits your investment portfolio whether an Individual Family Home let for a small fee or Office, Factory, Shop or Farm with rent collected and regular inspections made.

**Saleroom Manager**  
Colin R. Young FNAVA

**Partners**  
C. Robin Hall FRICS FIAA  
Ian J. Shaw FRICS FNAEA

**Financial Service Consultant**  
John G. Stukins



# **-GOLDINGS-**

## **ANTIQUES DEPARTMENT**



### **GENERAL ENQUIRIES**

Our Auction Rooms are open 9am to 1pm & 2pm to 5pm Monday to Friday. Please call in or telephone (0476) 65118 for entering items, valuation appointments, sales information, house clearances and transport arrangements.



### **VALUATIONS**

For items too large or numerous to bring to us our valuer can visit your home to give personal advice on the best method of sale.

With an increasing number of thefts, particularly of Antiques & Works of Art it is essential to have a detailed inventory and report with photographic records. This can be essential when negotiating settlements with Insurance Companies.



### **SELLING WITH GOLDINGS**

For over 90 years we have held sales in Grantham. Our spectrum ranges from important paintings, such as two examples by Fred Stead selling for £10,800 to items of a few pounds.

Our versatility enables us to deal with single items to Country House Sales with the same level of professional competence. Flexible commission rates, extensive register of specialist buyers and regular sales ensure that your valuables get the widest International exposure and that selling with us is a pleasurable and profitable experience.

**HOW TO FIND ...**

**"THE LARGEST**

**PURPOSE BUILT**

**AUCTION ROOMS**

**IN THE AREA"**

