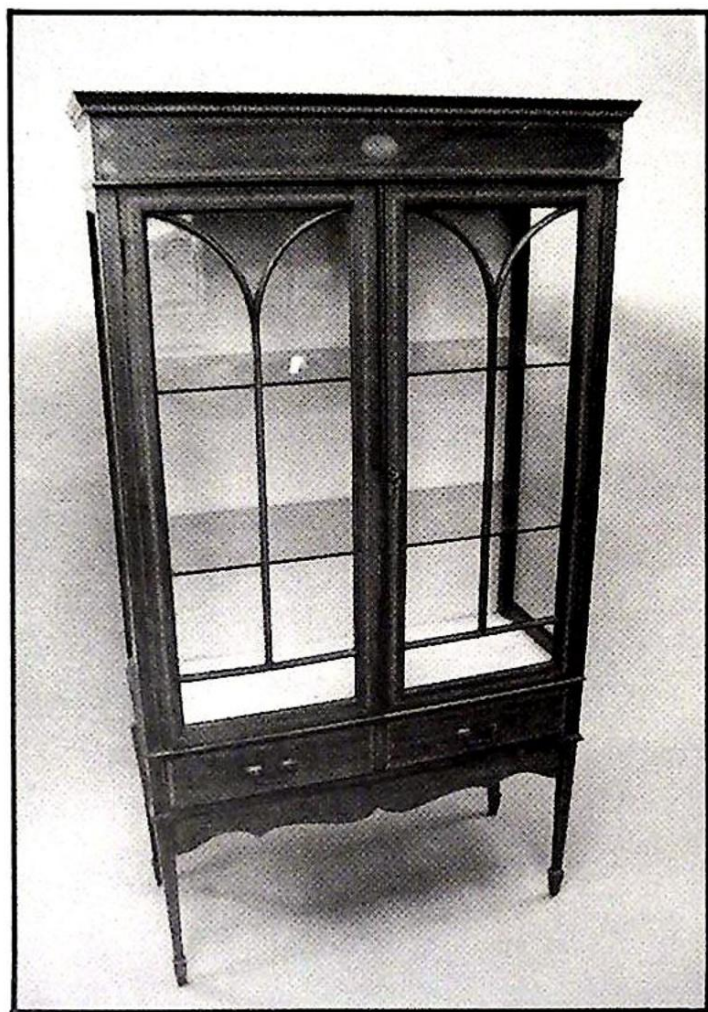


Established 1900

# **-GOLDINGS-**

Chartered Auctioneers  
Valuers, Surveyors & Estate Agents

**THE GRANTHAM AUCTION ROOMS**



# **AUCTION**

**On Wednesday, 8th September, 1993**

# -GOLDINGS-

## ANTIQUES DEPARTMENT



### GENERAL ENQUIRIES

Our Auction Rooms are open 9am to 1pm & 2pm to 5pm Monday to Friday. Please call in or telephone (0476) 65118 for entering items, valuation appointments, sales information, house clearances and transport arrangements.



### VALUATIONS

For items too large or numerous to bring to us one of our experienced Valuers will visit your home to give personal and confidential appraisal for age, origin and value.

Sale Valuations are free of charge and given without obligation, together with advice for the best method of sale.

Probate Valuations can be prepared at short notice and the property cleared swiftly. Once a person has died it is essential to remove all valuables before it becomes common knowledge that a property is unoccupied.

Insurance Valuations can be prepared for single items or whole contents. With an ever increasing number of thefts, particularly of Antiques & Works of Art it is essential to have a detailed inventory and photographic records. If you do not have one at present, please ask our Valuer to call BEFORE IT IS TOO LATE!



### SELLING WITH GOLDINGS

Our versatility enables us to deal with single items to Country House Sales with the same level of professional competence.

Flexible commission rates, extensive register of specialist buyers and regular sales ensure that your valuables get the widest International exposure and that selling with us is a pleasurable and profitable experience.



### PAST SUCCESS

Selling for over 90 years in Grantham you can rely upon our experience and success. Your treasures from nominal to great value receive the same special care and attention.



A late 19th C. Dutch floral  
marquetry Boudoir Sofa.  
Sold for £2,500.



Upon instructions from Solicitors, Executors and Private Individuals.

**Messrs**

# **-GOLDINGS-**

will sell by Auction selected pieces of

**ANTIQUE & LATER**

**FURNITURE, GLASS, CERAMICS, SILVER, JEWELLERY,  
A VARIETY OF COLLECTORS ITEMS  
AND A MOTOR CAR**

on Wednesday 8th September, 1993

Commencing 10am at

**THE GRANTHAM AUCTION ROOMS**

Old Wharf Road, Grantham, Lincolnshire NG31 7AA  
Telephone: (0476) 65118 Fax: (0476) 590998

Viewing Times:

Sunday 5th: 2pm to 4pm  
Tuesday 7th: 1pm to 7pm  
Saleday 8th: 9am to 10am

Cover Illustration: Lot 420

## CONDITIONS OF SALE

1. The highest bidder shall be the buyer. The Auctioneers reserve the right of regulating the biddings; of rejecting any bid; and of bidding for, withdrawing, consolidating, dividing or altering the order of lots.
2. The purchase money for each lot with the usual commission of 10% plus VAT at the current rate shall be paid at the fall of the hammer (if required). Each lot at the fall of the hammer shall be at the sole risk and expense of the buyer, and shall be paid for and removed immediately after the conclusion of the sale, *but no lot shall become the property of the buyer, or be removable until paid for*, and if taken away in contravention of these conditions without an order for removal signed by the Auctioneers, they shall have power to seize the same by their servants or agents, or otherwise, or the Auctioneers may recover either the lot sold or the price thereof (at their option) by action at law.
3. No contra account of any description whatever will be allowed to the buyer as a set off, and payment for each Lot shall be made to the Auctioneers or their clerk only, and a buyer paying by cheque must give satisfactory references (if required).
4. For all purposes of this sale the Clerk of the Auctioneers shall be deemed to be the agent of both seller and buyer.
5. A bidder shall not be allowed to retract his bidding after the fall of the hammer, and he shall give up his full name and address if required. The Auctioneers will not recognise the transfer of any lot from one buyer to another, nor make any alteration in the sale book in respect thereof.
6. The Auctioneers are acting only as agents, and give no personal warranty as to the condition, quality or authenticity of any chattels offered for Auction. Any catalogue description is given merely as guide to purchasers, any description can be changed from the rostrum before the lot is sold. If a purchaser buys without previous inspection he will do so at his own risk.
7. Notwithstanding any other terms in these Conditions, if within 7 days of the sale a purchaser gives notice in writing that a lot is a deliberate forgery, with supporting factual evidence, the Auctioneers may rescind the transaction. The burden of factual proof lies with purchaser, mere opinions will not satisfy. This benefit is not assignable.
8. If any buyer neglect or refuse to comply with the above conditions or any of them, his deposit money (if any) shall be forfeited, and the lot uncleared may, at the option of the Auctioneers, be resold without notice by public auction or private contract, and any loss occasioned by such re-sale together with all expenses attendant thereon, or arising under these conditions shall be paid for by the defaulter at this sale and be recoverable as and for liquidated damages. This condition is however without prejudice to the right of the Auctioneers to enforce the contract made at this sale if they think fit.
9. Any Notes for Purchasers and catalogue Glossaries, where used, will be construed as Conditions of Sale.
10. The Auctioneers shall be the sole Arbitrators in all matters of dispute relating to these conditions both as between the seller and the buyer and between the several bidders and buyers and their determination on all matters shall be final and binding on all parties concerned.

Auctioneers: C. Robin Hall FRICS FAAV & Colin R. Young FNAVA



## IMPORTANT NOTES FOR PURCHASERS

1. **PAYMENT:** Must be made in full immediately after the Auction. The following methods of payment are acceptable.  
a) Cash   b) Bankers Draft   c) Building Society Cheque  
d) Cheques, accompanied by a valid card. For accounts above the stated card limit, we reserve the right to retain the goods until clearance is established.
2. **BUYERS PREMIUM:** of 10% + VAT is payable on all lots.
3. **REMOVAL OF PURCHASES:** Goods must be collected as soon as they are paid for, and in the Two Working Days following the sale. If goods are not collected on these days we reserve the right to charge £1 per lot per day thereafter.
4. **COMMISSION BIDS:** If you are unable to attend this or any of our future sales we will be pleased to bid on your behalf. We always purchase at the lowest possible price, subject to other bids and reserves.  
  
All bids must be handed to the office on an official form. It remains the responsibility of prospective purchasers to contact GOLDINGS to confirm whether their bids have been successful.
5. **TELEPHONE BIDS:** There are inherent dangers with this practice, therefore all such arrangements are made entirely at the bidder's risk. Telephone bids will only be accepted if the lower catalogue estimate is £500 or above. For lots with a lower estimate below this figure Commission Bids Only will be accepted.
5. **SMOKING:** is not permitted in any part of the Saleroom.
6. **REFRESHMENTS:** will be available Saleday.
7. **ACCOUNT TRANSFERS:** will not be recognised after the sale. If any lots are purchased for another person, this must be declared at the fall of the hammer.

## GLOSSARY

- a) Generally: '*As Found.*' (AF). This term indicates the lot has some damage. Its absence does not indicate that the lot is free of defect. All lots are SOLD AS SEEN.
- b) Paintings: '*Signed, initialled, monogrammed.*' This refers to the present state of the work and is not an attribution.
- c) Books and printed matter: These items are not sold subject to collation and are not returnable once removed from the premises.
- d) Silver & Jewellery: Weights given are approximations given by basic instruments.
- e) Estimates: For intending purchasers we include in this catalogue the Auctioneers opinion of value. If no figures are given the value is less than £20.

## CAR

1. A 1988 Volkswagen Jetta GTI 16v SALOON CAR, under 50,000 miles, Registration F810 XEW. *See illustration.*

Note: HPI investigations show an outstanding balance. An undertaking for payment has been made between the Liquidator and Toyota Finance.  
**£2000-3000**



## BYGONES & COLLECTORS ITEMS

2. A Humber Sports Gentlemen's Bicycle with drum brakes.
3. A substantial hand hewn STONE TROUGH. *See illustration.* **£350-450**



4. A large DOLLS HOUSE. **£80-100**
5. A brass bound oak HALF BARREL.
6. An album of 78rpm Records.



7. **A GERMAN HORN GRAMAPHONE**, with a walnut case and a painted tin horn. Fully restored in 1984. *See illustration.* **£500–700**



8. A quantity of HMV 78 rpm Records.
9. An oak cased HMV GRAMAPHONE. £40–60
10. Old Classical and Operatic Records, Box.
11. A HMV Model 101 Gramophone. £20–30
12. An oak Smokers Stand. £20–30
13. A 19thC WOOL WINDER. £80–120
14. A 19thC tabletop SPINNING WHEEL. £100–150
15. A canvas Traveller's Trunk.
16. A large leather Suitcase.
17. A large leather Suitcase.
18. A large leather Suitcase.
19. A leather Suitcase.
20. A rosewood Thumbstick and a Marvel tennis racquet.
21. A Victorian steel Spark Guard.
22. A pair of old Skis and sticks.
23. A tapestry of Tutankhamun.
24. A stuffed and mounted Fox Head £20–30.

25. A group of brass Mallards.
26. Two mounted Boar's Heads. £30-50
27. A taxidermy Buzzard. £25-40
28. A Victorian spelter Marley Horse.
29. Three stoneware Spirit Kegs.
30. A brass and copper Coal Bucket and irons (AF).
31. A Turkish copper Samovar. £25-40
32. A copper Fondue Pan of Islamic design. £25-30
33. An old brass Miner's Lamp. £30-40
34. A copper Water Jug together with four copper pot-bellied Tankards. £20-30
35. A 19thC soapstone Spill Vase.
36. An old 'Parker' Display Case.
37. A leather Gladstone Bag.
38. A selection of brass and iron Weights.
39. Five woodworking Planes.
40. Plate, bells, etc.
41. A late Victorian Pocket Stereoscopic Viewer. £30-40
42. Old vehicle Tax Holders.
43. Two brass sprays and cobblers leg.
44. A Victorian galleried Lacquer Tray.
45. Compass, magnifier and lapels.
46. An African tribal figure and an ivory tusk.
48. A selection of brass fittings.
49. A pair of burlwood octagonal Spill Vases.
50. Six Georgian brass pierced backplate Handles and four escutcheons.  
£20-30
51. A Victorian Flat Iron and Trivet.
52. Two copper Sieves and two copper Pans, all with brass handles.



53. An old black bakelite Telephone.
54. A terracotta Chicken Roaster by Hemstock, Sutton-on-Trent.
55. A cased Ukelade (AF).
56. Two lignum vitae Rules and a flat iron trivet.
57. Pewter, Tankards and Plates. £20-30
58. Sanderson floral print 154cm (61") drop Curtains, two 160cm (63") wide, one 114cm (45") wide. (3). £20-30
59. **A Victorian VIOLIN** with the signature and label GEORGE PYNE Maker London ANNO 1892, 14". £200-300
60. A Victorian charcoal burning FUNNEL IRON and ember carrier. £40-60.
61. A Victorian charcoal burning LACE IRON of navette shape. £30-40
62. A Victorian brass inlaid WRITING BOX. (AF) £80-100
63. A 1920's Wedding Dress, etc.
64. A Victorian rosewood TEA CADDY of sarcophagus form. £40-60
65. **A late Regency rosewood tabletop JEWELLERY & WRITING CABINET**, the caddy top having mirror and fitted jewel tray over two doors concealing dummy drawer, two drawers and a lap desk, inlaid with mother of pearl decoration. *See illustration.* **£350-450**



66. Pedestal Ashtray.
67. An Art Deco 3-piece Brush Set.
68. A Victorian BAYONET with sheath. £30-40

69. A 19thC Hunting Sword with a curved steel blade, brass handle and knuckle guard and bone handle. £30–50
70. A Victorian mahogany BOOT JACK. £100–150
- 71. An hexagonal mahogany MINIATURE PILLAR BOX. 37 cm (14½") high. See illustration on centre pages. £300–400**
72. A 17thC. Japanese POLE ARM. £150–200
- 73. A Cromwellian style Lobster-Tail HELMET. £280–350**
- 74. Two Victorian engraved glass Window Lights.**
- 75. A ROCKING HORSE by Haddon of Wallingford & Clacton-on-Sea. £300–400**
76. A collection of 19 steel Keys. £25–40
77. Two cloissone Bowls.
78. A cased pair of Binoculars.
79. C.30 fish shape Counters.
80. An ARMAND MARSEILLE character BABY DOLL, with bisque head, sleeping eyes, open mouth and composite body. Marked A.M. Koppelsdorf, 930 Germany A.3/0 M., c.1920. 36 cm (14"). £100–150
81. A signed Chinese hand painted porcelain Snuff Bottle.
82. Two needle holders.
83. A Chinese blue and white porcelain Snuff Bottle.
84. Bone seals, knife, etc.
85. A Chinese intricately hand painted jade egg.
86. A Victorian Meerchaum PIPE carved with the mask of an old sailor with a nude lady entwined in his long beard, cased. £150–200
87. A Champeve enamelled miniature balister vase.
88. A cabinet comprising four trays of plaster Relief Medallions (approx 100 pieces) depicting Classical and Renaissance subjects, in the style of the Grand Tour medallions. £120–180
- 88A A circular cast aluminium PLAQUE of the R.N.A.S. Training Establishment, Cranwell, Sleaford. £40–60



89. c.70 – 6d's and plaque.
90. A pair of Regency bronze CANDLESTICKS together with a similar example, 23 cm (9") high. *See illustration on centre pages.* £200–300
91. A model TRACTION ENGINE, solid fuel fired. £250–350
- 92 to 100. Spare Lots.

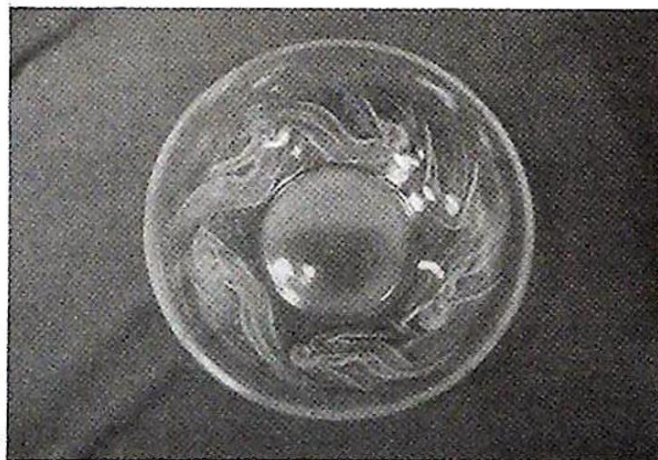
## GLASS & CERAMICS

100. A modern Chinese baluster Vase with cover.
101. A Till & Sons floral pottery Rosebowl. £30–40
102. A pair of Wedgwood 'Greenleaf' Comports.
103. An early 19thC. DERBY FRILL VASE. (AF) £60–80
104. Teapot, porcelain caddies, etc. £35–50
105. Onyx vase and miscellaneous china.
106. Five assorted Plates.
107. Shelley vase and other china.
108. A Doulton Slater's Patent Teapot. (AF)
109. A Limoges Trinket Set and Hatpins.
110. Two 19thC Oriental Vases, Water Jug, drabware Jug and Pepperpot.
111. A small pair of 19thC Chinese Vases (1 AF) and three Oriental design plates.
112. A Victorian cut crystal decanter, sweet jar and seven frosted glass dishes.
113. Three graduated Mallard Wall Figures.
114. A Decanter and six glasses.
116. A Victorian glass baluster Vase.
117. A small Cornucopia Figure.
118. An Oriental part Tea Service in blue and cream with gilt decoration.
119. A vine engraved glass Fruit Bowl.
120. A 19thC German bisque Figure of a girl reclining on a chaise longue.

121. Six lead crystal Sherry Glasses.
122. Two Toby and two Character Jugs.
123. Two silver rimmed orange glass salts and vase.
124. Three glass Sugar Castors, two with silver tops.
125. Three pieces of green glass, one silver rimmed.
126. A crystal Decanter with label.
127. Six 18thC Dutch Delft Tiles.
128. A Chamberlains WORCESTER 'Japan' design polychrome CABINET PLATE.  
*24cm (9½") dia. c.1800 (AF) £40-60*
129. An AYNSLEY Cabinet Plate painted with a rural scene, within a turquoise and gilt border. £20-30
130. A Staffordshire moulded and hand painted Side Plate. £20-30
131. A Cantonese Plate. £20-30
132. A shaped and moulded oval CABINET PLATE of THE HAGUE factory, the centre field painted with two blue and yellow birds on a branch, the border having four blue and gilt panels connected by garlands, c.1775. Stork mark in underglaze blue. (AF) £70-90
133. Two 18thC. Dutch Delft blue and white Plates. (AF)
134. A Victorian COPELAND Dessert Plate painted with a view of Lausanne, within a yellow and gilt border. £20-30
135. A Qianlong blue and white Plate. £20-30
136. Six Dicken's Character Jugs. £30-40
137. Three Kingston Character Jugs. £20-30
138. A pair of Mason's 'Manderin' Plates. £20-30
139. Six lead crystal Goblets. £25-40
140. A QUIMPER armorial baluster Vase. £30-40
141. A Qianlong famille rose PALETTE MUG with five figures in an underglaze cartouche, overglaze diaperwork field and serpent handle. *See illustration on centre pages.* £120-180
142. A large Victorian glass Urnular Vase with cover, painted with flora. £20-30



143. A 19thC German polychrome bisque Figure Group of boy, girl and rabbit. 21cm (8½") high. £25-40
144. A 19thC German polychrome bisque Figure of a boy. 38cm (15") high. (AF). £20-30
145. Seven pieces of Wedgwood blue and white Jasperware. £30-50
146. Two Meiji period Imari Plates. £20-30
147. A Guangxu famille rose BOWL decorated with gilt and enamels, on a carved lacquer stand. 23cm (9") dia. *See illustration on centre pages.* £80-120
148. A pair of HICKS & MEIGH stone china DESSERT PLATES with moulded scallop rim, gilt and polychrome floral decoration through, c.1820. *See illustration on centre pages.* £100-150
149. A MASON'S ironstone LOVING MUG decorated in the Oriental taste, c.1870 (AF). £40-60
150. An ASHWORTH'S ironstone oval MEATPLATE and three DINNER PLATES, (1 AF), decorated in the Oriental taste, c.1870. Matching previous lot. *See illustration on centre pages.* £80-120
151. An ASHWORTH'S Imari Pattern Ironstone DINNER PLATE. £20-30
152. A slice cut crystal cocktail and sherry Glass. £25-40
153. Nine slice cut crystal Goblets and two further glasses. £25-40
154. A Victorian floral Cheese Dish. £20-30
155. '**Ondine Ouverte**', a **LALIQUE opalescent BOWL**, circular with six moulded nymphs, engraved R. Lalique, France. 21cm (8") dia. *See illustration.* **£250-400**



156. A display twist-stem Champagne Flute.

157 to 170. Spare Lots

## **BOOKS, ETC.**

171. The Illustrated London News 1955 edition and Earls Court Motor Show supplement, Daily Sketch reprint and 1957 West Indies tour souvenir.

172. Bill the Minder, hardback, written and illustrated by W Heath Robinson.

173. The Illustrated Library Shakespeare in 9 volumes. £50-70

174. Splendour of France and Belgium the Glorious, 2 volumes.

175. H.M. The King Picture Book, and others.

176. Poems by William Cowper of the Inner Temple, 1837.

177. General War Map and the Art Portfolio of War Leaders.

178. Two WWI Postcard Silks.

179. A Victorian photograph album and bible.

180. Lincolnshire in 1836 with nearly 100 engravings, published by John Saunders, Jun., Lincoln, clothboard. £40-60

181. 'On the Study of words' by R C Trench dd 1892.

182 to 190. Spare Lots

## **JEWELLERY & BIJOUTERIE**

191. A moonstone and white metal BAR BROOCH.

192. An Edwardian 9ct rose gold and citrine FOB SEAL. Birmingham 1903.  
£25-40

193. Pearl necklets, silver pieces, etc.

194. An 18ct gold marquise shoape RING set with five diamonds. £60-90.

195. A 9ct gold SLAVE BANGLE, 13 grammes. £40-60

196. Two inlaid jet Brooches.



197. An agate bead Necklet and matchin bracelet.
198. A 15ct gold Diamond set BAR BROOCH. £40-60
199. A 9ct gold buckle design SCARF CLIP. £30-40
200. A large oval moss agate BROOCH with a gold mount. £60-80
201. An 18ct gold and platinum RING, set with an oval ruby enclosed by diamonds. £50-80
202. A Victorian 15ct gold RING set with two sapphires and seed pearls. £40-60
203. A Victorian multi-gem Brooch. £40-60
204. A garnet set gold BROOCH. £40-60
205. Two carats of faceted emeralds.
206. Costume Jewellery.
207. A Victorian white metal Bangle and a silver rattle.
209. A pair oi 9ct gold drop chain EARRINGS each with a single amethyst. £50-70
- 209A. A pair of silver Cufflinks.
210. A pair of 14ct gold ORIENTAL CUFFLINKS. £40-60
211. Five gold charms. £35-50
212. Four Oriental gold charms. £80-120
213. Two Men's 9ct gold Black Onyx RINGS. £30-40
214. A 9ct gold peridot ½ HOOP RING. £40-60
215. A 9ct gold Sapphire & Diamond ½ Eternity RING. £30-40
216. An 18ct gold Lion Claw PENDANT.
217. A 9ct gold & Enamel Naval Sword BROOCH. £40-60
218. Three 9ct gold ETERNITY Rings. £25-35
219. Four 9ct gold Dress Rings. £25-35
220. Two Diamond Solitaire RINGS (one 9ct & one 18ct gold). £30-40
221. Assorted 9ct gold charms. £80-100
222. Silver Brooch, Garnet Pendant & Pear Pendant. £25-35
223. A Gold Cross and Belcher chain. £30-40

- 224. A Gold Necklet.
- 225. A 3-colour gold Bracelet.
- 226. A sapphire & diamond Cluster Ring and a blue topaz & diamond Cluster Ring. £25–35
- 227. Two Pair of gold Earrings, gold chain, gold chain & heart pendant. £25–35
- 228. A 9ct gold Signet Ring, and a 9ct gold Ring set with CZ.
- 229. An Oriental gold & pearl Ring. £20–30
- 230. A 14ct gold peridot & Aquamarine 2 stone Ring. £20–30
- 231. A 9ct gold Cameo Ring. £25–35
- 232. Three assorted dress Rings (2 AF). £20–30
- 233. An 18ct gold & platinum single stone Ring. £20–30
- 234. A George V 18ct gold sapphire & diamond Gypsy Ring, London 1915. £180–250
- 235. Silver pendant, chain, cufflinks and charm.
- 236. An Antique 22ct gold CLUSTER RING set with emeralds and diamonds. £250–350**
- 237. A 9ct gold Art Nouveau BROOCH set with ruby, peridot, garnet and seed pearls, boxed. £80–100
- 238. An 18ct gold SOLITAIRE RING with an 80pt. diamond. £500–700**
- 239. A 9ct gold Flowerhead RING set with emeralds and diamonds. £80–100
- 240 to 250. Spare Lots

## NETSUKE

- 251. A Japanese hardwood Netsuke, traditional study of a Fisherman. £20–30
- 252. A signed Japanese hardwood Netsuke, study of a youth resting upon a fallow deer. £20–30
- 253. A signed Japanese Netsuke, study of a youth in finely decorated kimono carrying a large toad. £30–40
- 254. A signed Japanese Netsuke, study of a fisherman with his catch basket full. £30–40



255. A signed Japanese Netsuke, study of a market trader offering peaches from a basket. £30–40.

256 to 260. Spare Lots

## CLOCKS & WATCHES

261. An Antimas 9ct gold Ladies Watch with 15 jewels. £20–30

**262. An 18ct gold OMEGA Lady's WRISTWATCH, cased. £400–500**

263. A Lady's 9ct gold TISSOT WRISTWATCH on 9ct gold bracelet. £40–60

264. A Lady's 9ct. gold OMEGA WRISTWATCH on a cordette leather strap. £30–40

**265. A 14ct gold OMEGA Gentleman's WRISTWATCH, cased. £500–600**

266. A William IV silver Pocket Watch. (AF). Birmingham 1833

267. A 14ct gold Lady's ½ Hunter POCKET WATCH. £30–40

268. A Lady's 9ct gold CERTINA WRISTWATCH on a 9ct gold bracelet. £50–80

269. A Venus Lady's WRISTWATCH inset in a 18ct gold bangle.

**270. A French brass CARRIAGE CLOCK, white faced with Roman numerals and maker T.R. Russell, 1682 Paris. £400–500**

271. A slate and marble Mantel Clock. £25–40

272. A 19thC German walnut MANTEL CLOCK with an 8-day movement. £80–120

273. A WATCHMAKER'S CABINET of eleven drawers with miscellaneous spare parts. £50–80

274. A mahogany WALL CLOCK with Westminster chime. £100–150

275. A 1920's oak Wall Clock with Westminster chime 8-day movement. £30–40

**276. A George III mahogany crossbanded oak LONGCASE CLOCK with swan-neck pediment, freestanding cluster columns, arch top trunk door, 30 hour movement, painted dial by ...wright, Nottingham. 213cm (7'0i) high. £350–500**

277 to 280. Spare Lots

## SILVER & PLATE

- 281. Six oval silver plated Platters.
- 282. An EPNS Coffee Pot and Water Jug. £35–50
- 283. A Victorian silver plated London shape Teapot. £25–35
- 284. Platedware including caddy spoon, butter knives, etc.
- 285. A Grinsell's Patent silver plated two bottled Tantalus Stand. £30–50
- 286. An electroplate globular TEA KETTLE on a simulated bamboo warming stand. *See illustration on centre pages.* £100–150
- 287. Two Georgian style silver plated Coffee Pots. £30–40
- 288. A large silver plated Salver.
- 289. A pair of Edwardian silver Salt Spoons.
- 290. An Edwardian silver Pepper Pot.
- 291. A pair of Edwardian Sugar Nips and a spoon with a rocco bowl.
- 292. Six silver rat-tail Coffee Spoons, cased, Birmingham Assay.
- 293. Two silver and a plated Napkin Rings.
- 294. Six George V silver Coffee Spoons, cased, Sponsor James Dixon & Son – Sheffield 1926.
- 295. A Victorian silver four slice toaster TOASTRACK. London 1899. 140 grammes (4.5 oz). £50–60
- 296. A Victorian silver CREAM JUG. Chester Assay. 75 grammes (2¼ oz). £40–60
- 297. A continental silver SPOON with applied Royal coat of arms to the handle and the bowl embossed with Edward I. Import work of 1913. £20–30
- 298. A pair of filigree Toothpick Holders, continental white metal.
- 299. An Edwardian miniature oval silver Photograph Frame. £30–40
- 300. Six George III cut crystal CRUET BOTTLES, each silver topped, c.1807. £200–300**
- 301. A sterling handled Needle Cleaner in the form of a strawberry. £25–40.**
- 302. An Edwardian silver handled Glove Stretcher, Lace Hook and Button Hook, Chester Assay. £25–40





Lots 71, 90, 414



Lots 409, 411, 418, 417A



Lots 413, 410

Lots 141, 147, 148, 150, 286, 315



303. A Victorian Queen's pattern Sugar Spoon. Sponsor George Angel. London 1861.
304. Six George IV silver fiddle pattern TEASPOONS. Sponsor W.J. London 1823. £20-30
305. Four Victorian silver topped Scent Bottles. (AF). £20-30
306. Two silver Photograph Frames.
307. A pair of George III fiddle pattern Sugar Tongs. London Assay.
308. Four silver spoons and cigarette case.
309. Georgian silver flatware, 3 spoons and 3 forks. £25-40
310. Rat-tail soup spoons, bone handled pickle fork, etc and four silver spoons.
311. Six pairs of Knives and Forks with mother of pearl handles. - £20
312. A thread & fiddle pattern Part Cutlery Service of 26 pieces of electroplate. £25-40
313. A King's pattern CUTLERY SERVICE for six place settings, being 40 pieces of A1 electroplate. £60-90
- 314. A heavily chased Indian white metal TRAY, COFFEE POT and TWO DISHES. c.1750 grammes (60 oz). £300-400**
315. An early 19thC Sheffield Plate ICE BUCKET with a gadrooned and scalloped rim, lion mask swing handles, on ball feet. *See illustration on centre pages.* £150-200
- 316 to 320. Spare Lots

## PICTURES

321. A pair of oak framed Shooting Prints. £20-30
- 321A. A signed Lithograph of Austin Mackenzie, Master of the North Pytchley hounds. £20-30
322. Harry Fricker. A still life watercolour of flowers in a vase. £30-40
323. M Flint. A Victorian oil on canvas landscape. £20-30
324. E Sharland. A signed colour print of Salisbury Cathedral.
325. Prosperity, a Hogarth Print, in a modern frame. £20-30



- 325A. A Victorian chronolithograph in a maple frame. £40–60
326. F Haynes. A highlighted pencil sketch of Fishing Boats. £20–30
327. O.D. Roberts. A watercolour Farmyard Scene. £20–30
328. Four pictures, two unframed.
329. T Sutherland. A set of four aquatint Hunting Scenes after Alken. £40–60
330. A colour engraving 'The First Barrel' shooting scene.
331. Ailments of the Horse, all man made. Print.
- 331A. A pair of Landscape Prints.
332. An Edwardian oak framed Print, Well Done.
333. A landscape Watercolour.
334. A print of an Asian girl.
335. A still life print of flowers.
- 335A. An Art Deco framed Print.
336. A Pears Print – Spring Blossoms. £20–30
337. A Victorian colour Print – My Darling's Better, in a maple frame. £40–60
338. A Victorian colour Print – Quiet Reading, in an oak frame. £25–40
339. A set of six Hunting Prints after Alken.
340. F Golden Short. An oil on board coastal scene of Perranporth, Newquay. 23cm × 30cm (9" × 12"). £20–30
341. A mid-European scene of riverside buildings with moored boat and figures, watercolour. 24cm × 40cm (9½" × 15½"). *See illustration.* £100–150



- 341A. Tom Campbell. A pair of watercolour Landscape.
342. A small watercolour of a building by a river, indistinctly signed. £20-30
343. A print on canvas of Elizabeth I.
344. A print on canvas.
345. A pair of Victorian colour Hunting Prints. £20-30
- 345A. Cuthbert Bradley. A colour Hunting Print signed in pencil by the artist and by Frank Gillard, huntsman to the Duke of Rutland 1879 to 1896. £40-60
346. Three Victorian Prints.
- 347. E. Zampighi.** An interior scene with baby in crib overlooked by three of the other five figures, oil on panel, signed. 29cm x 40cm (11½" x 15½"). See illustration. **£600-800**



- 348. H. Barter.** Still life flowers in a jug, oil on canvas, signed. 56 cm " 46 cm (22" x 18"). £50-80
- 349. F. Musin.** A harbour scene, oil on panel, signed. 42cm x 75cm (16½" x 29½"). See illustration. **£600-800**





350. 19thC. English School. A landscape with a girl holding a wheatsheaf, oil on panel. *51cm × 37cm (20" × 14½")*. £100–150

## **ORIENTAL RUGS**

351. A Shiraz Rug. £150–200  
352. An Afghan Prayer Rug. £40–60  
353. A Beluch Rug. £150–200  
354. A Bokkara Rug. £40–60  
355. A Kurdish Rug. £150–200  
356. A Beluch Rug. £50–80  
357. A Hammadan Rug. £100–150  
358. A Beluch Rug. £50–80  
359. An African Kelim. £25–40  
360. A Bokkara Rug. £50–80  
361. A Beluch Rug. £60–90  
362. A Turkoman Rug. £100–150  
363. Two small Rugs.  
364 to 370. Spare Lots

## **FURNITURE**

371. A pair of Victorian reeded mahogany PILLARS. *115cm (45") high*. £50–80  
372. A pair of Victorian reeded mahogany PILLARS. *115cm (45") high*. £50–80  
373. An oak drawleaf DINING TABLE. £60–90  
374. A set of four Victorian carved walnut balloon back DINING CHAIRS with cabriole legs. (1AF). £250–350  
375. A late 19thC ORKNEY CHAIR. £150–200  
376. A glass top brass Coffee Table. £40–60  
377. A Lloyd Loom Patio Chair.

378. A late Victorian OPEN ARMCHAIR upholstered in black rexine. £60–90
379. A square FOOTSTOOL with satin floral upholstery and ball and claw feet. £30–50
380. A Victorian Mahogany Wine Table. £30–40
381. Commode, two towel rails.
382. An Edwardian Luggage Stand. £30–40
383. A Victorian mahogany SIDE TABLE. £60–80
384. An Edwardian walnut KNEEHOLE DESK raised on turned legs with castors. *61cm × 133cm (24" × 52")*. £100–150
385. An Edwardian mahogany marquetry SIDE CHAIR. £40–60
- 386. A late Victorian walnut KNEEHOLE DESK, *121cm × 61cm (48" × 24")* £300–400**
387. A Victorian SMOKERS BOW CHAIR with a double 'H'-stretcher. £80–120
388. A Victorian oak three tier WHATNOT. £150–200
389. An Edwardian oak windout DINING TABLE with single leaf. £200–300
390. A set of four Edwardian mahogany DINING CHAIRS with pierced back splats and cabriole legs. £80–120
391. A compact Georgian style KNEEHOLE DESK on bracket feet. *48cm × 80cm (19" × 31")*. £120–180
392. A George III mahogany Dining Chair in the Hepplewhite manner. £30–50
393. An Edwardian beech wind-out DINING TABLE. £50–80
394. A Regency style mahogany SIDEBOARD with a serpentine front. £100–150
395. A pair of William IV mahogany barback SIDE CHAIRS with turned legs. £30–40
- 396. A 17thC oak WAINSCOT CHAIR. £300–400**
397. A Georgian oak Gateleg DINING TABLE. £50–80
398. A Georgian yew bow back WINDSOR CHAIR with an elm saddle seat, H stretcher, cabriole front legs and pad feet. £120–180
399. A 17thC oak BIBLE BOX. £150–200



400. A 17thC oak MULE CHEST with plain top, 4 panel front and two drawers. 138cm (54") wide. £180-250
401. A Victorian mahogany BREAKFAST TABLE, the moulded circular top on octagonal taper pedestal, and trefoil base. 102cm (40"). £180-250
402. A 1940's KNOLE SUITE upholstered in floral tapestry. £150-200
- 402A. A 18thC Continental curved elm CARVER CHAIR with tapestry seat. £100-150
403. A Georgian pierced splat Dining Chair.
404. A rosewood OCCASIONAL TABLE with two carved cabriole supports. £100-150
405. A Victorian mahogany tip top PEDESTAL TABLE with trefoil base. £250-350
406. An Edwardian inlaid mahogany octagonal OCCASIONAL TABLE. £120-150
407. An American walnut SUTHERLAND TABLE. £180-250
- 408. A Victorian glazed walnut BOOKCASE, with single door. £300-400**
- 409. A Regency black lacquer CARVER CHAIR** with scroll arms, reeded cresting rail, green chinoiserie barback and seat rail, sabre legs front and rear. *See illustration on centre pages.* **£400-600**
- 410. An early Victorian walnut TEAPOY**, the gadroon moulded circular top over a swell barleytwist pillar, on three carved cabriole legs. *See illustration on centre pages.* **£600-800**
- 411. A Regency rosewood PIANO SEAT** with a rulled and brass inlaid cresting rail, pierced and inlaid barback, rise and fall leather upholstered circular seat, on four turned and reeded legs. *See illustration on centre pages.* **£600-800**
412. A Regency mahogany PIANO STOOL with a rise and fall leather upholstered circular seat, on four turned and reeded legs. £280-350
- 413. A quality walnut WORK TABLE** with a fitted shaped top, over four turned pillars, on four Regency style splay legs with brass toes and castors. *See illustration on centre pages.* **£400-600**
- 414. A late Regency PIER TABLE** having a brass galleried marble top, brass inlaid rosewood frieze and base, mirrored and giltwood back, with gilt brass front pillars. 61cm (24") wide. *See illustration on centre pages.* **£1500-2000**

415. Spare Lot
416. A Victorian SMOKERS BOW CHAIR with a double 'H'-stretcher. £80-120
417. An early Victorian panelled mahogany KNEEHOLE DESK with conventional drawer configuration to the front and a bank of four drawers and four dummy drawers to the side of one pedestal, with knob handles. 158 cm x 112 cm (62" x 44"). £1500-2000
418. A pair of Regency painted black lacquer LAMP TABLES with trefoil bases. *See illustration on centre pages.* £400-600
419. A George II square carved giltwood FOOT STOOL on bun feet. £200-300
420. An Edwardian mahogany DISPLAY CABINET with shell inlaid dentil cornice, two glazed and crossbanded doors, over two drawers, shaped apron and square taper legs with spade feet. *See cover illustration.* £350-500
421. A George III mahogany LINEN PRESS having two large panelled doors, over two short and single long drawers, oval pressed brass handles, on bracket feet, 123cm (48") wide. *See illustration* £400-600



422. A George II oak split CHEST of 2 short and 3 long graduated drawers. 107cm (42") wide. £100-150
423. A Victorian bleached mahogany CHEST of 2 short and 3 long graduated drawers. 97cm (38") wide. £120-180



425. A Victorian brass Triple Dressing Table Mirror. £30-40
426. A Victorian walnut Upright Piano by J.B. Cramer & Co., London. £25-40
427. An Edwardian walnut framed OVERMANTEL MIRROR with bevel glass. *140cm (55") square*. £100-150
428. A 1920's mahogany bowfront SIDEBBOARD. £40-60
429. An Edwardian inlaid mahogany DRESSING CHEST. £100-150
430. A late Regency rosewood CHIFFONIER BASE, with two drawers over two arch panel doors. *122cm (48") wide*. £100-150
431. A late Georgian mahogany bowfront CHEST of three graduated drawers with brass swing handles, on splay feet. *102cm (40") wide*. £180-250
432. An Old Charm COURT CUPBOARD. £180-250
433. A Victorian mahogany bowfront CHEST of three long and two short drawers, with turned knob handles and feet. *106cm (42") wide*. £100-150
434. A Victorian mahogany TABLE MIRROR with swing glass, barleytwist pillars and shaped base. £80-120
435. A 1930's oak side by side BUREAU CABINET. £80-120
436. A Victorian painted mahogany CABINET BOOKCASE. £80-120
437. An American ORGAN by Needham of New York, *c.1900*. £80-120
438. A 1930's beaded oak three -piece BEDROOM SUITE. £100-150
439. An oak SIDEBBOARD with applied carved panels. £100-150
440. A Canadian walnut ORGAN by Bell & Co. £50-80
441. An Edwardian walnut MIRRORBACK SIDEBBOARD. £100-150
442. A Victorian mahogany TRIPLE WARDROBE with centre mirror door. £250-350
443. A Victorian grain painted pine WARDROBE with mirror door and drawer base. £80-120
444. A William IV mahogany PEMBROKE TABLE, (AF). £50-80
445. A George III rosewood crossbanded mahogany PEMBROKE TABLE, the plain top having canted fall flap, true and dummy frieze drawer, brass knob handles, square taper legs, brass toes and castors. (AF) £200-300

446. A Victorian stripped pine WASHSTAND with three drawers. £40–60
447. A heavy Victorian pine scrubtop FARMHOUSE TABLE with three drawers and turned legs, *102 cm × 214 cm (40" × 84")*. £180–250
448. A Victorian grain painted pine BLANKET BOX. £40–60
449. A Victorian pitch pine WRITING TABLE with two frieze drawers and turned legs. £80–100
450. A Victorian pine DRESSING TABLE. £60–90
451. A Victorian carved oval Wall Mirror. £70–90
452. An early Victorian mahogany D-shape CHEST of 2 short and 3 long graduated drawers with wooden knob handles on turned feet. *106cm (42") wide*. £200–300
453. An Edwardian inlaid mahogany WASHSTAND and DRESSING TABLE £150–200
454. A Victorian satinwood DRESSING TABLE £40–60

END OF SALE



# FORTHCOMING SALES AT

## THE GRANTHAM AUCTION ROOMS

GOLDINGS will sell by AUCTION

**ANTIQUE & MODERN**

**FURNITURE & EFFECTS**

on Wednesday 22nd September, 1993 at 10am

Viewing: Day prior to Sale 1pm to 5pm & Saleday 9am to 10am

## THE COMPLETE AUCTION SERVICE

Our next catalogued sale of

**ANTIQUES & FINE ART**

is on Wednesday 17th November, 1993 at 10am

To include Furniture, Paintings, Prints, Silver & Plate, Glass,  
Ceramics, Books, Jewellery, Arms & Militaria, Bygones, Coins,  
and a variety of Collectors' Items.

— — — *Further entries now Required* — — —

Viewing: Sunday 14th 2pm – 4pm, Tuesday 16th 1pm – 7pm  
and Saleday 9am – 10am

Catalogues £2.50 (pre-paid) by post or £2 from our offices.

GRANTHAM'S NO 1 AUCTIONEERS & VALUERS FOR

ANTIQUES \* FINE ART \* HOUSEHOLD \* COMMERCIAL

## NOTES

---



# Messrs -GOLDINGS-

will return to their Traditional style Weekly Auction Sales of

**GENERAL FURNITURE**

**BRIC - A - BRAC**

**HOUSEHOLD & OUTDOOR EFFECTS**

on Every Wednesday in October, 1993 at 10am

**THE GRANTHAM AUCTION ROOMS**

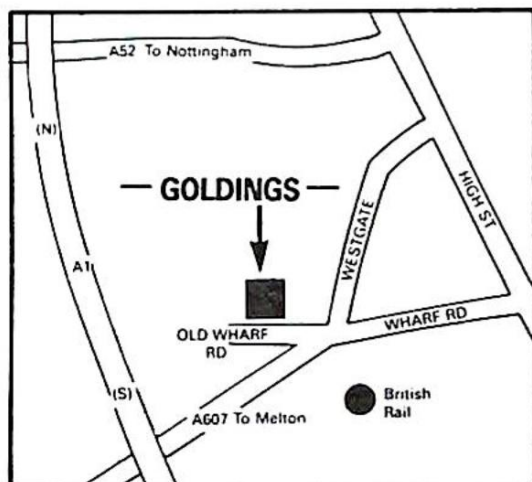
are already open Monday to Friday to receive entries, but  
in October between 9am and 12 noon they will be

**OPEN EVERY SATURDAY**

Before you come into Town, load up your surplus items from the House,  
Garage or wherever and bring them to Market.

**VENDORS PAID OUT SALEDAY\***

How to find us .....



- FREE SALE VALUATIONS
- TRANSPORT ARRANGED
- REGULAR SALES OF  
ANTIQUES  
& FINE ART

**AUCTION!**  
The positive way  
to turn your  
Antique & Modern  
goods into  
**CASH!**

Auction Rooms, Old Wharf Road, Grantham, NG31 7AA  
Telephone: 0476 65118

\*Subject to our Conditions of Entry

# COMMISSION BID FORM

LOT NO	BRIEF DESCRIPTION	PRICE

Bids are left at the senders risk and are accepted subject to our Conditions of Sale.

NAME: .....

ADDRESS: .....

.....

.....

.....

TEL: .....

SIGNATURE: .....

SALE DATE: .....

Lots will be purchased at the lowest price as permitted by other bids or reserves.

Prospective purchasers should contact the Auction Rooms after the sale and if successful, the item(s) purchased must be collected and paid for within two days of the sale.

A Buyers Premium of 10% + VAT will be levied on the hammer price, to all purchasers.



## MAILING REGISTER SUBSCRIPTION FORM

If you wish to receive our Auction catalogues and detail sheets for one year, please complete and return this form.

### 1. Antiques & Fine Art Auctions

There are currently planned 5 Sales per annum to include:-

Furniture, Paintings, Prints, Glass, Ceramics, Toys, Silver, Clocks, Watches, Jewellery, Metalware, Stamps, Coins, Books, Arms & Militaria, Bygones, Barometers, Collectors Items, etc.

### 2. Commercial Auctions

Frequency of Sales determined by instructions from The High and County Courts, Liquidators and Receivers.

Office Equipment, Catering Equipment, Engineering Equipment, Industrial Plant & Machinery, Retail/Wholesale Shop Stock and Fittings, Vehicles; - Assets of a variety of Businesses.

### 3. Specific Requirements

If you specialise in one area of the above categories (eg. *Books*) please state this to avoid receiving unwanted catalogues.

.....

1. Antiques & Fine Art. (£10) £.....

2. Commercial Auctions. (£5) £.....

Fee enclosed £..... Total

Name: Mr/Mrs/Miss/Title .....

Address: .....

.....

.....

.....

Tel: (.....) ..... Date: ..... Our Ref: \*ML .....

NOTES

***Lowes Removals***



*Removals - Fine Art Carriers*  
*Local & Long Distance*

**Andrew Lowes**

40 Vernon Avenue, Gonerby Hill Foot,  
Grantham, Lincs., NG31 8JJ  
*Telephone: 0476 65194*

PRINTED BY W.G. HARRISON, DYSART ROAD, GRANTHAM  
TEL: 0476 62700



Established 1900

# -GOLDINGS-

Chartered Surveyors, Auctioneers, Valuers & Estate Agents  
Residential, Commercial, Agricultural, Antiques & Fine Art

45 High Street, Grantham, NG31 6NE  
Telephone: 0476 · 590211

## PROFESSIONAL SERVICES FOR



### RESIDENTIAL

---

We have a department headed by Chartered Surveyors to undertake valuation and sale of all types of property from Castles to Town Houses. Surveys, Homebuyers Reports, Mortgage, Insurance and Probate Valuations to individual requirements.

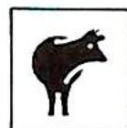


### COMMERCIAL

---

*Property:* Dealing with the survey of Shops, Offices and Factories. Sale, Valuation and Rent Reviews, Lease negotiations and Rent Arbitration for the landlord and tenant.

*Plant, Machinery & Assets:* Sales for Receivers, Liquidators, High Court & County Court. Auction Sales on Site prepared for private and public clients alike.



### AGRICULTURAL

---

Our Senior Partner has wide experience in the sale and valuation of Agricultural Properties, conducting Farm Sales and Valuation of Live and Dead Farming Stock for dissolution, Probate and other matters. Other areas covered include Rent Reviews, Development Land reports and Annual Stocktaking Valuations.



### FINANCIAL SERVICES

---

Our Experienced Consultant is available to advise on all matters concerning Finance, Mortgages, Insurance, Investment, Planning and Pensions.



### PROPERTY MANAGEMENT

---

Personal service and attention to detail ensures that our management team exploits your investment portfolio whether an Individual Family Home let for a small fee or Office, Factory, Shop or Farm with rent collected and regular inspections made.

**Saleroom Manager**  
Colin R. Young FNAVA

**Partners**  
C. Robin Hall FRICS FAW  
Ian J. Shaw FRICS, FNAEA

**Financial Service Consultant**  
John G. Stukins

Established 1900

# **-GOLDINGS-**

Chartered Auctioneers  
Valuers, Surveyors & Estate Agents

**THE GRANTHAM AUCTION ROOMS**

Old Wharf Road, Grantham, Lincolnshire NG31 7AA  
Telephone: (0476) 65118 Fax: (0476) 590998