

Established 1900

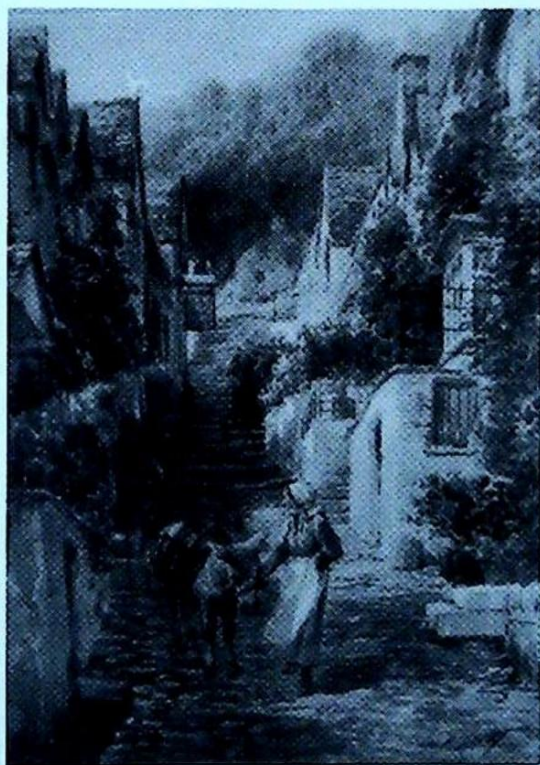
-GOLDINGS-

THE GRANTHAM AUCTION ROOMS

Upon instructions from Executors of Estates from Grantham and Stamford,
the residual contents of a Sleaford farmhouse and others.

GOLDING YOUNG & Co. will sell by AUCTION

Antiques & Fine Art



on Wednesday, 18th October, 1995, at 10 a.m.

Golding Young & Co.

Old Wharf Road, Grantham, Lincolnshire, NG31 7AA

Telephone: (01476) 65118

Fax: (01476) 61475

CONDITIONS OF SALE

1. These Conditions together with any Notices to Purchasers are the only terms and conditions subject to which Golding Young & Co. ("the Auctioneers") as agents for the Vendor will sell goods to a purchaser ("the Bidder") and all other conditions, whether express, or implied at common law or by statute as are capable of lawful exclusion are hereby excluded.
2. The highest bidder shall be the buyer. The Auctioneers reserve the right of regulating the biddings; of rejecting any bid; and of bidding for, withdrawing, consolidating, dividing or altering the order of lots.
3. The purchase money for each lot with the usual commission of 10% plus VAT at the current rate shall be paid at the fall of the hammer (if required). Each lot at the fall of the hammer shall be at the sole risk and expense of the buyer, and shall be paid for and removed immediately after the conclusion of the sale, *but no lot shall become the property of the buyer, or be removable until paid for*, and if taken away in contravention of these conditions without an order for removal signed by the Auctioneers, they shall have power to seize the same by their servants or agents, or otherwise, or the Auctioneers may recover either the lot sold or the price thereof (at their option) by action at law.
4. No contra account of any description whatever will be allowed to the buyer as a set off, and payment for each Lot shall be made to the Auctioneers or their clerk only, and a buyer paying by cheque must give satisfactory references.
5. For all purposes of this sale the Clerk of the Auctioneers shall be deemed to be the agent of both seller and buyer.
6. A bidder shall not be allowed to retract his bidding after the fall of the hammer, and he shall give up his full name and address if required. The Auctioneers will not recognise the transfer of any lot from one buyer to another, nor make any alteration in the sale book in respect thereof.
7. The Auctioneers are acting only as agents, and give no personal warranty as to the condition, quality or authenticity of any chattels offered for Auction. Any catalogue description is given merely as guide to purchasers, any description can be changed from the rostrum before the lot is sold. If a purchaser buys without previous inspection he will do so at his own risk.
8. Notwithstanding any other terms in these Conditions, if within 7 days of the Sale a purchaser gives notice in writing that a lot is a deliberate forgery, with supporting factual evidence, the Auctioneers may rescind the transaction. The burden of factual proof lies with purchaser, mere opinions will not satisfy. This benefit is not assignable.
9. If any buyer neglect or refuse to comply with the above conditions or any of them, his deposit money (if any) shall be forfeited, and the lot uncleared may, at the option of the Auctioneers, be resold without notice by public auction or private treaty, and any loss occasioned by such re-sale together with all expenses attendant thereon, or arising under these conditions shall be paid for by the defaulter and be recoverable as and for liquidated damages. This condition is however without prejudice to the right of the Auctioneers to enforce the contract made at this sale if they think fit.
10. Any Notes for Purchasers and Catalogue Glossaries will be construed as Conditions of Sale.
11. The Auctioneers shall be the sole Arbitrators in all matters of dispute relating to those conditions both as between the seller and the buyer and between the several bidders and buyers and their determination on all matters shall be final and binding on all parties concerned.

Auctioneers: C. Robin Hall FRICS FAAV & Colin R. Young FNAVA



Established 1900

-GOLDINGS-

• Fine Art Auctioneers & Valuers •

THE GRANTHAM AUCTION ROOMS

Golding Young & Co
Telephone: (01476) 65118

Old Wharf Road, Grantham, Lincs NG31 7AA
Fax: (01476) 61475

GOLDING YOUNG & Co. will sell by AUCTION

Antiques & Fine Art

On Wednesday, 18th October, 1995, at 10 p.m.

**This collective catalogued sale includes
BOOKS, PRINTS, GLASS, CERAMICS, SILVER,
PLATEDWARE, PAINTINGS, CLOCKS,
TOYS, BAROMETER, JEWELLERY,
COLLECTORS' ITEMS & FURNITURE**

Viewing Times:

Sunday 15th: 2 p.m. to 4 p.m.

Tuesday 17th: 2 p.m. to 7 p.m.

Saleday 18th: 9 a.m. to 10 a.m.

Cover Illustration: Lot 495

IMPORTANT NOTES FOR PURCHASERS

1. **PAYMENT:** Must be made in full immediately after the Auction. The following methods of payment are acceptable.
a) Cash b) Bankers Draft c) Building Society Cheque
d) Cheques, accompanied by a valid card. For accounts above the stated card limit, we reserve the right to retain the goods until clearance is established.
2. **BUYERS PREMIUM:** of 10% + VAT is payable on all lots.
3. **REMOVAL OF PURCHASES:** Goods must be collected as soon as they are paid for, and in the Two Working Days following the sale. If goods are not collected on these days we reserve the right to charge £1 per lot per day thereafter.
4. **COMMISSION BIDS:** If you are unable to attend this or any of our future sales we will be pleased to bid on your behalf. We always purchase at the lowest possible price, subject to other bids and reserves.

All bids must be handed to the office on an official form. It remains the responsibility of prospective purchasers to contact GOLDINGS to confirm whether their bids have been successful.
5. **TELEPHONE BIDS:** There are inherent dangers with this practice, therefore all such arrangements are made entirely at the bidder's risk. Telephone bids will only be accepted if the lower catalogue estimate is £500 or above. For lots with a lower estimate below this figure Commission Bids Only will be accepted.
5. **SMOKING:** is not permitted in any part of the Saleroom.
6. **REFRESHMENTS:** will be available Saleday.
7. **ACCOUNT TRANSFERS:** will not be recognised after the sale. If any lots are purchased for another person, this must be declared at the fall of the hammer.

GLOSSARY

- a) Generally: 'As Found.' (AF). This term indicates the lot has some damage. Its absence does not indicate that the lot is free of defect. All lots are SOLD AS SEEN.
- b) Paintings: 'Signed, initialled, monogrammed.' This refers to the present state of the work and is not an attribution.
- c) Books and printed matter: These items are not sold subject to collation and are not returnable once removed from the premises.
- d) Silver & Jewellery: Weights given are approximations given by basic instruments.

BYGONES & MISCELLANEA

1. A Mounted Police BATON and attachments.
2. A brass LOG BOX.
3. A Victorian brass OIL LAMP. £20-30
4. A "Blow" glass BUTTER CHURN.
5. A brass columnar OIL LAMP with engraved glass shade. £30-50
6. A Baby's GAS MASK and Warden's Helmet.
7. A Victorian brass and copper BUCKET. £30-50
8. A pair of wrought iron FIRE DOGS.
9. A Victorian cased OTTER by Robert Hope, Jedburgh. £25-40
10. A Victorian cased BADGER by R Raine, Carlisle. £30-50
11. A SLOT MACHINE - The Trickler by Bryan of Kegworth. £150-200
12. A SLOT MACHINE - The Twenty One. £120-180
13. A Victorian lead shell BIRD-BATH with putti. £150-200
14. An Indian brass HUBBLE PIPE. £20-30
15. A large DOLLS HOUSE and FURNITURE. £120-180
16. A Victorian MILKING STOOL. £20-30
17. A small 4 wheel CART. £40-60
18. A folding mahogany STAND for a Butler's Tray. £20-30
19. A folding mahogany TOWEL HORSE. £20-30
20. A Besson & Co EUPHONIUM (AF). £30-50
21. A pair of heavy Barleytwist oak CANDLESTICKS. £50-80
22. An Art Nouveau hammered copper hanging LANTERN. £200-300
23. A cut glass CHANDALIER. £30-40
24. A cut glass CHANDALIER. £70-90
25. C.375 Eagle Comics from 1956 onwards. £600-800
26. A pair of 19thC Italian painted terracotta FIGURES. £40-60
27. A Chinese embroidered SILK PICTURE, in carved lacquer frame. £25-40
28. A woolwork SAMPLER, dated 1890. £30-50
29. An early Victorian needlework PICTURE of a young girl, in silk. £60-80
30. A Georgian oval silkwork PICTURE of tree with basket of fruit. £30-50
31. 2 small Victorian copper SAUCEPANS. £20-30
32. A set of 4 graduated Victorian copper SAUCEPANS. £40-60
33. 2 Victorian copper BOWLS and Saucepan Cover.
34. A Victorian copper 2 handled SAUCEPAN. £25-35
35. A Victorian copper hanging CONTAINER. £20-30
36. An onyx BOOKEND.
37. A Hardy 12' SALMON ROD, in 3 sections. £80-120
38. Robert Morden. Colour County MAP of Norfolk.
39. 4 Framed Advertising POSTERS. £30-40
40. 4 framed Advertising POSTERS. £30-40

41. 4 framed Advertising POSTERS. £30-40
42. 2 framed Advertising POSTERS. £20-30
43. An old RAILWAY SIGN - Gate Closure Penalty. £25-40
44. A Victorian brass PRESERVE PAN, 14". £25-40
45. A Victorian brass LADLE.
46. A brass HAND BELL.
47. A Victorian copper circular JELLY MOULD. £25-40
48. A set of PAN SCALES.
49. A Victorian pierced brass KETTLE STAND. £25-40
50. A Victorian brass CHAMBER STICK.
51. A spun brass TABLELAMP.
52. A pair of brass HANGINGS cast in the form of game.
53. Bronze and brass MORTARS (2). £20-30
54. An old brass CAR HORN.
55. A pewter PLATE and pair of glass KNIFE RESTS.
56. An Antler TABLE LAMP.
57. A brass DINNER GONG.
58. A brass baluster VASE.
59. A brass FIRE EXTINGUISHER.
60. A 'King of the Road' CAR HORN. £20-30
61. A copper KETTLE. £20-30
62. A copper JARDINIERE and brass JUG.
63. A Victorian oak BOX with key. £20-30
64. A Victorian brass PRESERVE PAN, 9.1/2". £20-30
65. A Victorian brass PRESERVE PAN, 8.1/2". £20-30
66. A golden plush TEDDY BEAR with articulated head and limbs, 17" high. £200-300
67. A Victorian copper MILK SKIMMER. £20-30
68. Scales and Weights. £20-30
69. A pair of brass horse BOOKENDS.
70. Miscellaneous pictures.
71. A County Map of Nottingham.
72. An oak cutlery CANTEEN.
73. A Cranberry glass NIGHT LIGHT. £25-40
74. An oak BISCUIT BARREL.
75. 3 Victorian copper SAUCEPAN COVERS. £25-40
76. A Victorian walnut DESK STAND. £30-50
77. 2 R.E.M.E. Lance Corporal TUNICS.
78. 2 Victory wooden JIGSAWS.
79. A pair of brass model CANNONS. £25-40
80. An early granite PESTLE & MORTAR. £20-30
81. A stereoscopic VIEWER and cards. £20-30
82. A bronze MORTAR. £20-30
83. A Lucas 'Silver King' oil CYCLE LAMP. £20-30
84. A pewter BEDPAN by Richard Yates. £50-70
85. An ebony DRESSING TABLE SET.
86. An 18thC Crossbow STOCK. £25-40
87. A mahogany cased.
88. A brass and oak DINNER GONG. £25-40
89. A Georgian brass CANDLE-STICK with petal base. £40-60
90. A Victorian brass PRESERVE PAN. 12". £20-30
91. Rolling pins, bellows, bread-board, 3 glass dishes.

92. A Georgian brass DOORSTOP. £30-50
93. A 19thC Japanese BRONZE JARDINIÈRE with 6 relief panels on a diaperwork ground, seal mark to base 15" dia. £280-350
94. A pair of 19thC spelter FIGURES of fisherman and woman. £20-30
95. A pair of brass electric LIGHT FITTINGS. £150-200
96. A Georgian copper COFFEE POT of ovoid form with mesh face mount and on a circular gadrooned base. £60-80
97. 19thC Brass DOOR HANDLE with turned decoration
98. A Victorian brass Oil Lamp Reservoir. £20-30
99. A Victorian brass circular JARDINIÈRE with lion mask handles. £180-250
100. A pair of Oriental carved wooden FIGURES of Buffalo and mounts (AF). £180-250
101. A sectional WALKING STICK with toddy glass. £30-40
102. 4 Walking Canes with silver mounts. £50-70
103. A Geo III Copper barrel shape COFFEE POT with bark handle. £20-30
104. 19thC Anglo Indian Carved Hardwood DESK STAND. £35-50
105. A Westminster Bakelite RADIO, model ZA818. £30-40
106. 3 Skin HANDBAGS
107. Bowler HAT, TOP HAT and another. £40-60
108. A Victorian walnut circular FOOTSTOOL. £80-120
109. A Victorian walnut octagonal FOOTSTOOL with woolwork top. £100-150
110. A Victorian carved oak arched FOOTSTOOL. £70-90
111. A glass SMOKE COLLECTOR.
112. A tortoiseshell FEATHER FAN. £25-40
113. A Cat's Whisker RECEIVER. £25-40
114. 2 Art Deco FEATHER FANS and Ostrich Feather. £20-30
115. 5 satin PARASOLS and silver topped CANE. £20-30
116. A Victorian mahogany WOOL-WINDER. £20-30
117. A Victorian oval MIRROR and a maple FRAME (2). £20-30
118. Feather BOA, 3 parasols including bone finials.
119. A Chinese embroidered silk DRAPE. £40-60
120. 2 Child's DRESSES, satin shirt and another.
121. Feather Shoulder Wrap, etc.
122. A child's embroidered cream CARRYING CAPE. £20-30
123. A Victorian woolwork PICTURE of a girl carrying a basket on her head, mahogany frame. £100-150
124. A pair of carved Panels with Coathooks. £25-40
125. Two framed Colliery CERTIFICATES.
126. A mahogany brass mounted FISHING REEL.
127. An early Burroughs CALCULATOR in steel case.
128. A pair of brass CARRIAGE LAMPS. £20-30
129. A Lincolnshire Chronicle ENAMEL SIGN.
130. A brass taper BUCKET. £25-35
131. A part TRAINSET. £30-40

132. A miniature pedestal TABLE. £25-40
 133. A FAN and PARASOL. £25-35
 134. A pair of brass DOORSTOPS - George V and Queen Mary. £60-80
 135. A carved Shield STOOL.
 136. A silk PICTURE in a plated frame. £35-45
 137. A Victorian rosewood sarcophagus TEA CADDY. £25-40
 138. A Victorian rosewood sarcophagus TEA CADDY. £40-60
 139. A Victorian Tonbridgeware WORKBOX. £20-30
 140. A Victorian rosewood WORKBOX. £30-40
 141. A Georgian fitted mahogany WRITING BOX. £150-200
 142. A Victorian yew sarcophagus TEA CADDY. £80-120
 143. A George III mahogany TEA CADDY. £40-60
 144. A George III mahogany TEA CADDY with bracket feet. £80-120
 145. A George III mahogany TEA CADDY with bracket feet. £80-120
 146. A rectangular CUTLERY BOX.
 147. A Victorian carved oak BOX. £35-50
 148. A pair of Regency gilt papier mache COASTERS. £120-150
 149. A cased PUFFIN. £25-40
 150. A ROCKING HORSE. £150-250
 - 150A. A large copper JUG. £80-120
 151. 129 pages World Stamps.
 152. A mother of pearl concertina CARD CASE. £50-80
 153. A tartanware CARDBOX and tortoiseshell BOX.
 154. A WWI brass BOX.
 155. Bavarian DOG'S HEAD NUTCRACKER.
 156. A Victorian papier mache DESK-STAND. £30-40
 157. A Victorian papier mache SWEET DISH.
 158. A Bavarian carved bear INK-WELL.
 159. An album of World Stamps.
 160. A Victorian brass lion LETTER RACK.
 161. Lincoln Imp Letter Clip, resin figure and bronzed figure.
 162. 3 Fountain Pens. £25-40
 163. Plated Cruet, Dolls Teaware, etc.
 164. 6 Bakelite ASHTRAYS.
 165. Assorted World Stamps.
 166. A Victorian Berlin Woolwork LETTERRACK. £30-40
 167. A Victorian cast iron DOG NUTCRACKER. £30-40
 168. A signed 1954 Winston Churchill greetings letter.
 169. A Continental ivory Ink and Pen Stand on turned supports. £30-40
 170. ALBUM OF WORLD STAMPS X 3.
 171. A carved ivory RIVER BOAT. £30-40
 172. An INKSTAND.
 173. A pair of hide TRAVELLING INKWELL and LIGHTER.
 174. A small brass HAND LAMP.
 175. A fine 19thC premiere partie Boule CASKET. £250-350
 - 176-180. Spare Lots
-
- ### DIE-CAST MODELS & TOYS
181. Britains British Regiments No 7227, boxed.
 182. Matchbox 'Popeye' Models, Corgi 'Muppet Show' Models and Disney, all boxed.

183. Royal Mail Vans: Dinky Bedford 410. 2 Corgi Escorts and Lledo Vintage, all boxed. (4).
184. Emergency Services: Dinky 269 Police Transit; Corgi 339/621/-1185/297; Matchbox K67/K96/-K99/K39; Vanguard Fire Engine, all boxed (10)
185. Public Services: Corgi 499/497/-451/450/C532/498 x 2, all boxed (7).
186. Morris Vans: Corgi Classics 957/958/96842; Vanguard GPO, all boxed (4)
187. Royal Commemorative Buses: Corgi 471 and Dinky 297 Silver Jubilee; Matchbox 1981 Wedding x 2, all boxed (4).
188. Buses: Matchbox K15; Corgi 46930 and 1004, all boxed (3).
189. Buses: Matchbox K15; Corgi 46930 and 1004, all boxed (3).
190. Buses: Corgi 477 Buzby and Solids Green London (2).
191. Sports Cars: Matchbox K100/-K98/K70/K95; Corgi 312/1009/-345/314, all boxed (8).
192. Commercial Vehicles: Matchbox K24/K11x2/K17/K3/K29/K37, all boxed (7).
193. Commercial Vehicles: Corgi 1169/-1147x2/C1231/C1224, all boxed (5).
194. Vintage Commercial Vehicles: Corgi C821 and C867; 3 Gilbow and a Lledo, all boxed (6).
195. Corgi Classic Cars: 803/806/D701, all boxed (3).
196. Range Rover: Dinky 268 and 192; Corgi 507; Impy Major, all boxed (4).
197. Miscellaneous boxed Model Cars.
198. Dinky Spitfire MkII 719, boxed.
199. Dinky Anti-Tank Gun 625 and Austin Para-Moke 601, boxed (2).
200. Two Dinky Sea King Helicopters 724, boxed (2).
201. Matchbox K101/K104/K107 Tanks, boxed; Dinky Hurricane and Junkers (5).
202. Dinky 'Emergency' Truck 267, boxed.
203. Dinky 'Cinderella's Coach' 111, boxed.
204. Corgi James Bond Aston Martin 271, boxed.
205. Corgi James Bond Aston Martin 271, boxed (AF).
206. Dinky Purdey's TR7 112, boxed.
207. Matchbox No 12 Foden Break-down Tractor.
208. Dads Army Mobile Canteen, boxed.
209. Corgi Batmobile and Batboat, boxed.
210. Dinky Aveling Barford Roller 279 and Muir Hill Loader 437, boxed (2).
211. Dinky Aveling Barford Roller 279 and Ford Tractor, JCB Excavator boxed (3).
212. Dinky Rescue Launch 678 (box AF) and Matchbox K-22 Hovercraft, boxed.
213. Corgi Concorde 651, Space Shuttle and Matchbox Airbus.
214. Dinky Pullmore Car Transporter 582 and Lone Star Tanker.
215. 9 old die-cast Buses, mainly Corgi/Dinky.
216. A Corgi Heinkel and a Fire Engine.
217. 9 Ashtray/Deskstands with Vintage Models.
218. Modern Trains and carriages.
219. Die-cast Military Planes and Boats (AF).

- 220. Mamod Steam Roadster, boxed.
- 221. Assorted die-cast Models.
- 222. Assorted die-cast Models.
- 223. Assorted die-cast Models.
- 224. A Mamod STEAM TRACTOR, TRAILER and LINE SHAFT, all boxed.
- 225 to 230. Spare Lots.

GLASS & CERAMICS

- 231. A Victorian Staffordshire FIGURE of Highlander with shield and axe, 10". £50-70
- 232. A Victorian Staffordshire CHARACTER JUG - Hearty Goodfellow. £25-40
- 233. A reproduction Staffordshire FIGURE GROUP.
- 234. A Victorian Staffordshire FIGURE - Death of Nelson, 9". £150-180
- 235. A Victorian Staffordshire FIGURE - Lad & Lass on a Clock, 6". £100-150
- 236. A Victorian Staffordshire FIGURE - Tom King 12" (AF). £25-40
- 237. A Victorian Staffordshire Spill Vase FIGURE GROUP of boy and girl with a deer, 7" high. £150-200
- 238. A Victorian Staffordshire Spill Vase FIGURE GROUP of boy and girl with spaniel, 7" high. £150-200
- 239. A pair of Victorian Staffordshire SPANIELS with green lustre, 8" high. £150-200
- 240. A pair of Victorian Staffordshire SPANIELS. 8" high. £80-120
- 241. A fine pair of Victoria Staffordshire FIGURE GROUPS. £350-450
- 242. A gilt turquoise and white porcelain BASKET. £100-150
- 243. A Victorian green bubble glass DOORSTOP. £25-40
- 244. A pair of Victorian faceted WINE GLASSES.
- 245. A Victorian glass RUMMER. £20-30
- 246. 10 Victorian Custard GLASSES. £20-30
- 247. 9 Victorian Custard GLASSES. £20-30
- 248. Two 19thC majolica PLATES. £20-30
- 249. A 19thC majolica FISH JUG. £20-30
- 250. A 19thC majolica VINE JUG. £40-50
- 251. A Japanese DOLL HEAD BRUSH.
- 252. A cut glass WATER JUG.
- 253. A Belleek BOAT.
- 254. A German floral pierced COMFORT.
- 255. 3 Victorian WINE GLASSES.
- 256. Spode CUP and SAUCER, Copeland Plate (2 off).
- 257. A Wedgwood part COFFEE SET. £20-30
- 258. A pottery SARDINE DISH.
- 259. A large floral Baluster VASE. £50-80
- 260. A pair of floral cream VASES with gilt handles. £30-50
- 261. A Delft blue and white GINGER JAR. £20-30
- 262. A Minton Majolica JARDINIERE, 15" high (much restoration and damage). £100-200
- 263. 2 Victorian COMFORTS and 4 BOWLS.
- 264. A Redcliff ironstone WINE TUREEN, with spoon and jug. £60-80

265. Mottled brown Stoneware Pieces.
266. A glass BISCUIT BARREL with plated lid.
267. Myott Meatplate, New Hall Coffee Pot and 2 bowls.
268. Satsuma and Imari VASES (2). £30-40
269. A First Period Worcester CREAMER AND CUP. £30-50
270. A pink satin-glass BOWL with stand.
271. An Ashworth's MEATPLATE.
272. A Worcester gilt SUGAR BOX, dolphin base and small Teapot (AF). £30-40
273. Clear and coloured GLASSWARE
274. A Cranberry glass BOWL and a satin glass JUG.
275. A Price JUG, Clarice Cliff PLATE and 2 pieces of Poole.
276. Aynsley DISH, Cube TEAPOT and other chinaware.
A Copeland Late Spode DINNER SERVICE, with retail mark of Mortlock's Oxford Street, polychrome 'Peacock' pattern. To be sold in 9 lots.
277. 5 graduated octagonal Meatplates, 21" to 10". £200-300
278. 4 small octagonal Meatplates. £30-50
279. 21" octagonal Meatplates (AF). £20-30
280. Six 10" Bowls, six 10" Plates, oval Tureen, and two square Tureens. £80-120
281. Six 10" Bowls, six 10" Plates, oval Tureen, and two square Tureens, (1 cover missing). £80-120
282. Five 10" Plates. £25-40
283. Five 10" Plates. £25-40
284. Seven 8" Plates. £30-50
285. 9 1/2" square Bowl, 10" Plate and two 10" Bowls (1 AF). £20-30
286. A 19thC Spode 'Blue Italian' pattern MEATPLATE, 21". £180-250
287. A famille vert circular PLAQUE 10" dia. £70-100
288. A large ironstone JUG. £30-50
289. A Victorian black lustrous COW CREAMER.
290. A 19thC Samson FIGURE of NEPTUNE, 9" high. £80-120
291. An 18thC Imari bullet-shape TEAPOT. £20-30
292. An 18thC Chinese bullet-shape TEAPOT. £40-60
293. A Crown Devon 'Lustrine' BOWL, 4" dia. £20-30
294. A heavy cut glass CLARET JUG with plated mount. £180-250
295. An old pottery COW CREAMER. £180-250
296. Edwardian WINE GLASSES. £20-30
297. A famille vert BOWL (AF).
298. An Amherst Japan pedestal BOWL (AF). £60-90
299. A pair of 19thC Staffordshire gold wine JUGS with floral transfer printing. £100-150
300. A Meiji Imari WISHING WELL, 12". £100-150
301. A Meiji Imari BOTTLE VASE, 12". £30-50
302. A Minton floral POT POURRI DISH. £30-50
303. A 19thC Worcester relief VASE depicting an elephant tusk (AF). £40-60
304. Two silver lustre JUGS and GOBLET.
305. A large glass CANDY JAR. £25-40

306. An Oriental design JARDINIERE. £25-40
307. Royal Commemorative ware. £60-90
308. A pink glass TRINKET SET and Dachshound KNIFE RESTS. £25-40
309. A Fish JUG and jasperware JUG.
310. A Beswick character TEAPOT and 2 Jugs. £40-60
311. A 19thC French baluster VASE (AF). £25-40
312. A Minton green leaf moulded DISH. £20-30
313. A 19thC ALE GLASS with hollow baluster. £25-40
314. Large pair of CHINESE FIGURES. £250-350
315. A First Period Worcester blue and white bullet shape TEAPOT. £150-200
316. A 19thC KPM floral painted PLATE. £60-80
317. A 19thC Vienna floral painted PLATE. £60-80
318. A 19thC Vienna CUP & SAUCER. £30-40
319. 4 small FIGURINES.
320. 6 pieces Crested ware. £30-40
- 321 to 340. Spare Lots.

BOOKS

341. Walpole's Works, 7 vols.
342. Henry M Stanley. In Darkest Africa, 2 vols, 1890, with woodcuts and maps; Walter Scott. Stanley and Africa.

343. C D Gibson. 4 portfolio Sketchbooks, A Widow and Her Friends, Americans, The Social Ladder and The Education of Mr Pipp.
344. Phil May's 1895 Sketchbook; A B Wenzell, The Passing Show; Henry Parkes, That Sister-in-Law of Mine (3).
345. Admiral Sir Henry Keppel. A Sailor's Life Under Four Sovereigns, 3 vols.
346. E H Shackleton. The Heart of the Antarctic, 2 vols.
347. Ruff's Guide to the Turf, 13 vols 1919-1936.
348. Assorted Books.
349. Assorted Books
350. Assorted Books
351. Milton's Poetical Works, etc.
352. Old London Auction and Fair Catalogues.
353. Bryan's Dictionary of Painters and Engravers.
354. M L Solon. Old English Porcelain; Chaffers Handbook; Chats on Royal Copenhagen.
355. Herbert Cescinsky. English Furniture of the 18thC. 2 vols.
356. T E Lawrence. The Seven Pillars of Wisdom, Jonathon Cape.
357. Punch, 9 vols and British Nation.
358. Encyclopedia of Sport, 3 vols; Cricket of Today vol 1.
359. Stately Homes. Photo/Postcard Album.
360. Novels and Auction Catalogues.
361. The Life of the Rt Hon W E Gladstone, gilt cloth, 3 vols.
362. 3 Vols. "Catalogue of the Printed books in Edinburgh Library".
- 363 to 380 Spare Lots.



Lot 496



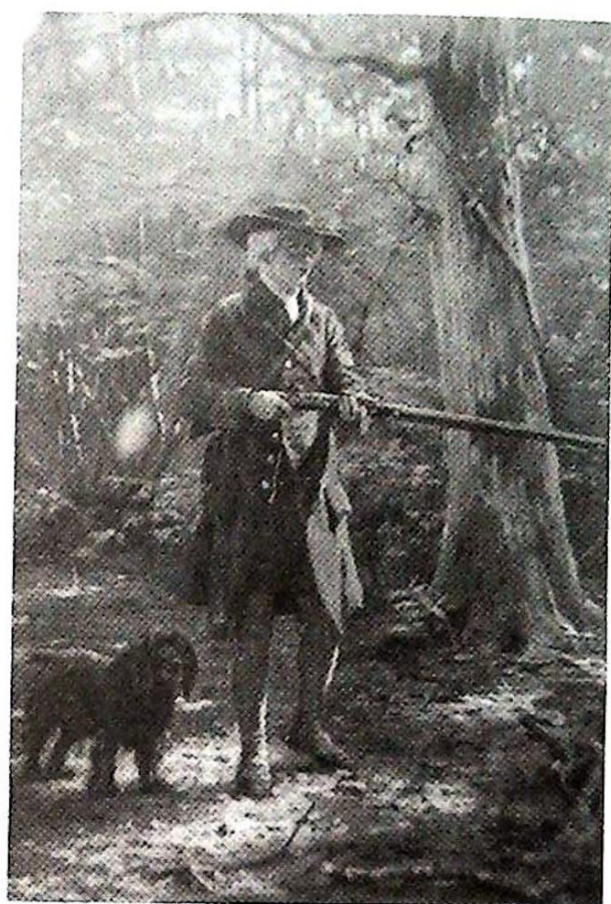
Lot 633



Lot 435



Lot 635



Lot 498



Lot 494



Lot 497



Lot 634



Lot 636



Lot 492

Lot 625



Left to Right: Lots 621, 620, 622

JEWELLERY & BIJOUTERIE

381. An SAS Malaya MEDAL and TANKARD. £20-30
382. A Garrard 9ct gold cased Gentlemans POCKET WATCH, presentation inscription. £40-50
383. A 9ct rose gold double ALBERT, forming a necklace with fob. £100-150
384. An Edwardian lady's rose gold FOB WATCH. £25-35
385. A 1904 Half Sovereign. £30-40
386. A 1906 Sovereign. £40-60
387. A 1911 Sovereign. £40-60
388. A 1913 Sovereign. £40-60
389. A 1914 Sovereign £40-60
390. A 1915 Sovereign £40-60
391. A 9ct rose gold Lady's WRIST-WATCH and another. £30-50
392. A 22ct gold WEDDING BAND. £25-35
393. A 9ct gold BAR BROOCH and another. £25-40
394. A silver ALBERT and Fob.
395. A 1960's Guitar BADGE with a BEATLES photograph.
396. A set of Lapis Lazuli BEADS.
397. A filled 9ct gold BRACELET. £25-35
398. An 18ct white gold Half-Eternity RING. £25-35
399. A 1950's Rolex 18ct gold Gentleman's WRISTWATCH with a President bracelet. £1000-1500
400. A fine Victorian diamond 3-stone RING, centre stone c1.25 carats, other two c0.35 carats each. £1000-1400

NETSUKE

401. A signed Japanese hardwood NETSUKE, study of a small monkey standing upon the shell of a turtle. £30-40
402. A signed Japanese hardwood NETSUKE, study of a fat rat making off with a vegetable. £30-40
403. A signed Japanese ivory NETSUKE, study of a youth in fine kimono playing a bamboo flute. £40-60
404. A signed Japanese ivory NETSUKE, study of a village elder seated in fine decorated costume and holding a sword. £40-60
405. A signed Japanese ivory NETSUKE, study of a boy and his oxen resting. £50-60
406. A signed Japanese ivory NETSUKE, study of a farm labourer holding an ads and a peach. £50-70
- 407 to 410 Spare Lots.

SILVER & PLATEDWARE

411. A galleried oval electroplate TRAY. £20-30
412. A plated SNUFF BOX.
413. An electroplate WARMING DISH on stand. £40-60
414. Plated CAKE BASKET, TEASET and DISHES.
415. Plated Salad SERVERS and Butter KNIVES, boxes (2).
416. Plated TEAPOT, CREAMER, 2 lustre goblets, etc.
417. An electroplate 2 section SERVING DISH. £30-50

418. An Elkington electroplate SARDINE DISH on ball feet. £80-100
419. A Christopher Dresser style plated WATER JUG.
420. An electroplate TEAPOT and Cutlery. £40-50
421. An electroplate 3 branch CANDLABRUM. £20-30
422. Pair Electroplate Corinthian Columnar CANDLESTICKS open square stepped base 9 1/2". £80-120
423. A Victorian chased silver CARD CASE, Birmingham 1900. £50-80
424. A Georgian oval pierced silver SALT with blue glass liner and later spoon.
425. A Victorian embossed silver CREAMER. London 1897. £40-60
426. A set of 6 Old English silver FORKS by James Dixon & Sons. Sheffield Assay. £60-80
427. A set of 6 Old English silver SPOONS by James Dixon & Sons. Sheffield Assay. £60-80
428. A set of 6 Old English silver COFFEE SPOONS by James Dixon & Sons, cased. Sheffield Assay. £25-35
429. A set of 6 Victorian Old English silver TEASPOONS. London 1894. £25-35
430. A silver crackle glass ASHTRAY.
431. A George V silver 3-piece TEASET, 1914. 30oz all in. £180-250
432. A pair of bright cut and pierced electroplate FISH SERVERS, cased. £50-80
433. A Walker & Hall electroplate 3 footed MUFFIN DISH. £30-40
434. A pair of miniature ENTREE DISHES, plated on copper. £25-40
435. An Edwardian silver CARD CASE with a pair of fighting lions in relief enclosed by a foliate border. Birmingham 1904. *See illustration centre pages.* £80-120
436. A Victorian silver 3 piece TEASET of compressed panelled circular form, bright cut engraving, scroll handled, Maker WB (Wm Barber or Wm Barrett II). London 1838 45oz. £650-750
437. A pair of silver DWARF CANDLESTICKS. Birmingham assay. £25-40
438. Pair Walker & Hall Electroplated SCISSORS with chased decoration, cased. £50-70
439. Engine turned silver ASHTRAY, Birmingham 1935.
440. A cased set of 12 pairs electroplate DESSERT KNIVES & FORKS by Joseph Rogers & Son, boxed with label. £120-180
441. A set of 6 silver DESSERT SPOONS Sheffield assay. £40-60
442. 4 pieces silver/plate.
443. An Edwardian silver pedestal BOWL. Birmingham 1905. 9oz. £80-120
444. An Edwardian silver repousse TRAY. Birmingham 1902. 11oz. £150-200
445. A plated 3 piece CRUET.
- 446 to 450 Spare Lots.

CLOCKS & BAROMETER

451. A Victorian slate MANTEL CLOCK. £25-40

452. A 19thC walnut regulator WALL CLOCK (AF). £150-250
453. An oak LONGCASE CLOCK, 30 hour movement, brass dial, silver chapter ring with roman numerals, signed Whitehurst Derby, single hand. £400-600
454. A fine 19thC burr walnut STICK BAROMETER by L Casella, Maker to the Admiralty and Ordnance, London. £1000-1400
- 455 to 460 Spare Lots.

PICTURES

461. 2 Canine colour ENGRAVINGS.
462. A colour PRINT. The Army & Navy. £30-40
463. Sophie T Butler. A small Coastal Scene watercolour signed and dated '32. £25-35
464. A watercolour of a Harbour signed E Murch after L M Watts. £35-45
465. A harbour scene and coastal scene. £20-30
466. A gilt framed Baxter PRINT. £20-30
467. A pair of Chinese rice paper PAINTINGS. £20-30
468. An engraving after Bartolozzi, Hogarth framed. £40-50
469. A set of 4 colour Coaching Scene engravings. £80-100
470. A PEARS PRINT by Fred Morgan. £40-60
471. WATERCOLOUR of country pass signed A M Goodall.
472. P MacGregor Wilson RSW. The Sound of the Mull, Watercolour, signed 7" x 10". £60-80
473. A PEARS PRINT of a young boy playing Cricket. £30-50
474. A PEARS type PRINT of a young Dandy. £25-40
475. A colour lithograph - Hampstead Heath. £20-30
476. A colour lithograph - Children playing cards. £2-30
477. Toon Koster. A small Sailing Boat in heavy waters, oil on canvas, signed 24" x 36" gilt framed. £25-40
478. M G Best. A coloured ink sketch titled Antibes 1919. £30-50
479. James Paterson. Sailing Ships, watercolour signed and dated '87. £30-40
480. An engraving of The Woodcutters after Moorland. £30-50
481. A Laura Knight PRINT - CARNIVAL.
482. A colour PRINT of young man, girl and mother signed E Wardle in pencil.
483. Blanche Ross. The first footsteps of winter in R**town, watercolour, 16" x 9", verso label Watercolour Society of Ireland. £20-30
484. A colour engraving - L'assemblee au Concert. £80-100
485. A G Asprey. Looking over Broadway in the Cotswolds, watercolour, signed 19" x 24". £80-120
486. Lucy Thorburn. Stag in winter landscape, oil on canvas, signed and dated 1905. £50-80
487. 19thC oil on canvas of a 4 mast Sailing ship, 18" x 24". £70-100
488. E Penstone RA. Peasant girl with a wheatsheaf, watercolour signed and dated 1877 8 1/2" x 5" £100-150
489. A pair of Chinese paintings on glass. £180-250

490. After Shayer. Donkey in landscape, oil on canvas, 12" x 17". £200-300
491. A gilt framed PORTRAIT labelled verso The Rev Solomon painted by Thos Ruth 1811. 7" x 5.1/2". £400-600
492. G Armfield. 3 Terriers rabbiting, oil on board, signed, 5" x 7", gilt framed. *See illustration on centre pages.* £500-800
493. Gilt framed OIL ON PANEL Still Life of flowers in a vase signed Gerschel 24" x 20". £400-600
494. 19thC English School. Dog Fox & Pheasant in rural landscape, oil on canvas, 20" x 24". *See illustration on centre pages.* £400-600
495. W H Sweet. Clovelly, Devon, street scene with donkey and figures, watercolour, 14" x 10", signed. *Illustrated on front cover.* £500-700
496. J Henry. Highland Cattle in Landscape, signed, oil on canvas, 28" x 36", moulded brown frame. *See illustration on centre pages.* £400-600
497. F Boudin. Harbour Scene, oil on canvas, bears signature and dated 92, 9" x 12". *See illustration on centre pages.* £400-600
498. George Goodwin Kilburne. On the Prowl, oil on panel, signed Goodwin Kilburne 1901, 12" x 8", titled gilt mount and modern frame. *See illustration on centre pages.* £1800-2500
- 499 to 540. Spare Lots.

CARPETS & RUGS

541. A Persian KELIM £90-120
542. A Persian Tabriz CARPET. £280-350
543. A Persian Serab RUG. £120-150
544. A Belough RUG. £80-100
545. A Northwest Persian RUNNER. £120-150
546. A Meshkin Persian RUNNER. £120-150
547. A Kilim WALL HANGING. £150-200
548. A Kilim. £75-100
- 549 & 550. Spare Lots.

FURNITURE

551. A Victorian satinwood BOX COMMODE. £25-40
552. A Victorian walnut PIANO STOOL £30-50
553. A Victorian inlaid walnut OCCASIONAL TABLE. £20-30
554. A moquette upholstered DAY-BED. £60-90
555. A long oak FOOTSTOOL with cabriole legs. £60-90
556. A Victorian lathback GRAND-MOTHER CHAIR. £80-120
557. A 17thC oak COFFER. £150-200
558. A Victorian pine DOUGH BIN. £100-150
559. A Victorian elm DOUGH BIN. £120-180
560. A Victorian stripped pine BLANKET BOX. £80-120
561. A Victorian stripped pine MONKS BENCH. £100-150
562. A Georgian oak CORNER CUPBOARD, 36" high. £120-180
563. A Georgian oak CORNER CUPBOARD, 3'8" high. £80-100

564. A Georgian oak CORNER CUPBOARD with panelled doors and dentil cornice. £200-300
565. A Georgian pine CORNER CUPBOARD with dentil cornice. £150-200
566. A 19thC elm ladderback CARVER CHAIR. £80-120
567. A set of 4 Edwardian walnut DINING CHAIRS with pierced slats and turned legs. £80-120
568. A Victorian mahogany 2 door WALL CUPBOARD. £80-120
569. Victorian mahogany hanging WALL SHELVES. £50-80
570. A Victorian spindleback CHILD'S CHAIR. £40-60
571. A pair of Edwardian inlaid rosewood SALON CHAIRS. £80-120
572. Victorian folding DAIRY STEPS. £40-60
573. An Edwardian inlaid mahogany MEDICINE CABINET. £80-120
574. A 19thC giltwood CONSOLE TABLE with marble top. £120-180
575. A 19thC giltwood CONSOLE TABLE with marble top. £120-180
576. A Regency mahogany CARVER CHAIR, cane seated. £150-250
577. Victorian Ash and Elm Smokers BOW CHAIR. £80-100
578. A set of 4 wheelback DINING CHAIRS. £40-60
579. An oval oak gateleg DINING TABLE. £80-120
580. An 18thC oak gateleg DINING TABLE. £100-150
581. A Georgian elm country CHAIR with Chippendale style pierced splat. £50-80
582. A Regency scroll-end SOFA with sabre legs (AF). £100-200
583. A Victorian mahogany rectangular TABLE with turned legs. £150-200
584. An oak OPEN BOOKCASE with cupboard base. £60-90
585. A heavy oak REFECTORY TABLE 30" x 60". £200-300
586. A large Victorian mahogany TABLE MIRROR. £120-180
587. A 19thC rosewood pedestal CENTRE TABLE. £180-250
588. A 1920's turquoise lacquer and chinoiserie RECORD CABINET £100-150
589. An 18thC oak JOINT STOOL. £250-400
590. An 18thC oak JOINT STOOL. £250-400
591. A George III mahogany PEMBROKE TABLE. £250-350
592. A 1930's BERGERE 3 PIECE SUITE. £150-250
593. A Victorian mahogany SIDE TABLE with 3 drawers and leather top. £100-150
594. A Victorian mahogany adjustable MUSIC STOOL. £150-200
595. A Georgian style flamed mahogany serpentine CHEST of 6 drawers, with splay feet, early 20thC. £150-250
596. A George III mahogany CORNER WASHSTAND. £200-300
597. A 1930's oak 4-Poster single BED. £100-150
598. A 19thC American ROCKING CHAIR. £120-180
599. An Edwardian crossbanded mahogany folding OCCASIONAL TABLE. £150-200
600. An Edwardian string inlaid mahogany JARDINIERE STAND. £150-250

601. An American walnut SUTHERLAND TABLE. £180-250
602. An unusual upholstered walnut ARMCHAIR stamped Foxheart Registered No 778788. £100-150
603. An 18thC oak SETTLE, 4 shield panels to the back. 6' wide. £200-300
604. A pair of 19thC Continental oak HALL CHAIRS. £100-150
605. A Victorian walnut NURSING TUB CHAIR in gold brocade. £150-200
606. A Victorian swing TOILET MIRROR with drawer. £25-40
607. A Victorian walnut candytwist ARMCHAIR, in red dralon. £280-350
608. A Victorian string inlaid mahogany TOILET MIRROR. £60-90
609. A Victorian walnut SUTHERLAND TABLE, oval moulded top, turned pillars, ceramic castors. £350-450
610. A 19thC barleytwist oak SIDE TABLE. £150-250
611. A William IV mahogany scroll ARMCHAIR, in red dralon. £280-350
612. A 17thC oak JOINT STOOL. £180-250
613. A fine set of Georgian mahogany BED STEPS. £400-600
614. A Victorian walnut STOOL with cabriole legs. £500-800
615. A William IV mahogany CANTERBURY. £600-800
616. A Victorian mahogany STOOL with cabriole legs. £600-800
617. A Queen Anne style walnut scroll ARMCHAIR in blue floral covers. £250-350
618. A George III mahogany CORNER WASHSTAND. £300-500
619. An Edwardian walnut octagonal CENTRE TABLE with galleried base. 36". £150-200
620. A 19thC satinwood inlaid and cameo panelled LADY'S WORKBOX on STAND. Provenance: Bought by present vendor's father from Normanton Hall, Nr Stamford. *See illustration on centre pages.* £600-800
621. A George III mahogany WIGSTAND. *See illustration on centre pages* £300-400
622. A mid 19thC French floral marquetry 3 tier ETAGERE. Provenance: Bought by present vendor's father from Normanton Hall, Nr Stamford. *See illustration on centre pages* £300-400
623. An Edwardian brass Corinthian columnar STANDARD LAMP. £500-700
624. A William IV Mahogany bowback LIBRARY CHAIR with reeded front legs. £400-600
625. A late 17thC/early 18thC oak SIDE TABLE, moulded top, frieze panelled drawer, brass handles, turned legs and front stretcher. 34" wide. *See illustration on centre pages.* £600-900
626. A Victorian brass and iron DOUBLE BED. £100-150
627. A rectangular gilt WALL MIRROR.
628. An oval gilt WALL MIRROR.
629. A gilt shield shape WALL MIRROR.
630. A large 19thC oval gilt WALL MIRROR. £200-300

631. A 1930's burr walnut ESCRITOIRE/BOOKCASE with central quartered veneered tall front with fitted interior over three drawers and flanked by glazed leaded light book compartments, on short cabriole supports. 48" wide. £280-350
632. An early 19thC mahogany CHEST of 2 short and 3 long graduated drawers, knob handles and bracket feet. 46" wide. £280-350
633. A fine Victorian mahogany CHIFFONIER, scroll carved back, drawer and 2 cupboard base. 46" wide. *See illustration on centre pages.* £400-600
634. A George III mahogany BUREAU BOOKCASE, two astragal glazed doors over a fall flap concealing a fitted interior, 4 graduated drawers pierced brass handles and escutcheon. 42" wide, 94" high. *See illustration on centre pages.* £1200-1500
635. A 19thC Flemish heavily carved oak SIDEBORD. *See illustration on centre pages.* £600-900
636. A Georgian oak DRESSER, with 3 shelf platerack, 3 frieze drawers, turned pillars, potboard and bracket feet. 70" wide, 74" high. *See illustration on centre pages.* £2000-3000
637. An Art Nouveau oak HALL-STAND. £300-400
638. An Edwardian inlaid mahogany CHINA CABINET on square taper legs. £500-700
639. A Georgian oak CUPBOARD with 2 door fielded panel top and 5 drawer base, pierced brass handles and bracket feet. 4'6" wide, 4'11" high. £600-900
640. A 17thC oak LIVERY CUPBOARD, the upper section with pierced carving, the lower having plain Wainscot panelling, c.6" high. £400-600
641. A large parcel gilt HONOURS ROLL BOARD, suitable for an Association or Club. 7' high, 7'6" wide. £180-250
642. An Edwardian inlaid and floral painted DISPLAY CABINET £150-200
643. A Georgian oak BUREAU. £180-250
644. A Victorian mahogany SCOTCH CHEST of 6 drawers. £120-180
645. A Victorian mahogany DOUBLE WARDROBE with mirror doors. £80-120
646. An Edwardian inlaid mahogany TRIPLE WARDROBE. £200-300
648. An iron CHANDELIER.

END OF SALE

COMMISSION BID FORM

LOT NO	BRIEF DESCRIPTION	PRICE

Bids are left at the senders risk and are accepted subject to our Conditions of Sale.

NAME:

ADDRESS:

.....

.....

.....

TEL:

SIGNATURE:

SALE DATE:

Lots will be purchased at the lowest price as permitted by other bids or reserves.

Prospective purchasers should contact the Auction Rooms after the sale and if successful, the item(s) purchased must be collected and paid for within two days of the sale.

A Buyers Premium of 10% + VAT will be levied on the hammer price, to all purchasers.

MAILING REGISTER SUBSCRIPTION FORM

If you wish to receive our Auction catalogues and detail sheets for one year, please complete and return this form.

1. Antiques & Fine Art Auctions

There are currently planned 5 Sales per annum to include:-

Furniture, Paintings, Prints, Glass, Ceramics, Toys, Silver, Clocks, Watches, Jewellery, Metalware, Stamps, Coins, Books, Arms & Militaria, Bygones, Barometers, Collectors Items, etc.

2. Commercial & Agricultural Auctions

Frequency of Sales determined by instructions from The High and County Courts, Liquidators and Receivers, and private individuals/companies.

Office Equipment, Catering Equipment, Engineering Equipment, Industrial Plant & Machinery, Live & Dead Farming Stock, Retail/Wholesale Shop Stock and Fittings, Vehicles; – Assets of a variety of Businesses.

3. Specific Requirements

If you specialise in one area of the above categories (eg. *Books*) please state this to avoid receiving unwanted catalogues.

.....

1. Antiques & Fine Art. (£10)	£.....
2. Commercial & Agricultural Auctions. (£5)	£.....
Fee enclosed	£..... Total

Name: Mr/Mrs/Miss/Title

Address:

.....

.....

.....

Tel: (.....) Date: Our Ref: *ML



Established 1900

-GOLDINGS-

• Fine Art Auctioneers & Valuers •

THE GRANTHAM AUCTION ROOMS

Golding Young & Co
Telephone: (01476) 65118

Old Wharf Road, Grantham, Lincs NG31 7AA
Fax: (01476) 61475

GOLDINGS STAMFORD ANTIQUES ROADSHOW

Our Principal Valuer and Auctioneer Colin Young F.N.A.V.A. will be available at our weekly Antiques Valuation Day to appraise your items.

This will provide you access to not only an International Market of buyers for higher value Works of Art, but also the quick turnaround that our Weekly Antique & Modern Auctions in Grantham provide.

Items suitable for the Weekly Sale deposited on a Friday would be sold the following Wednesday with payment the next Friday.

Selling by Auction in 7 days provides the quickest and most efficient way of selling in the area.

For more unusual or higher value lots allocation to one of our Regular Specialist Sales may be more appropriate.

Our Valuation Team, headed by Mr Young, comprises experts and consultants with an up-to-date working knowledge of:

- | | | |
|-------------|-------------|-----------|
| ★ Furniture | ★ Paintings | ★ Silver |
| ★ Ceramics | ★ Clocks | ★ Glass |
| ★ Books | ★ Jewellery | ★ Bygones |

and an increasingly diverse field of Collectors' Items.

For less portable items, such as furniture or large collections, either bring along a photograph or ask for our Valuer to visit your home, without charge or obligation to sell.

STAMFORD VALUATION OFFICE:

4, Ironmonger Street, Stamford, Lincs PE9 1PL
(Paul Johnson Property Consultants)

Telephone: (0378) 215134 - Every Friday 9.30 am to 1 pm

Established 1900

— GOLDINGS —

Chartered Surveyors, Auctioneers, Valuers & Estate Agents
Residential, Commercial, Agricultural, Property Management, Financial Services

45 High Street, Grantham, NG31 6NE

Telephone: 01476 · 590211

PROFESSIONAL SERVICES FOR



RESIDENTIAL

Our established Residential department headed by Chartered Surveyors undertakes sale and valuation of all types of property from Castles to Town Houses; Surveys, Homebuyers Reports, Mortgage, Probate and Insurance Valuations carried out with care attending to individual requirements.



COMMERCIAL

Dealing with the sale and survey of Shops, Offices and Factories. Valuation for Rent Reviews, Lease renewals and negotiations. Rent Arbitration, on behalf of landlord and tenant.

Plant, Machinery & Assets; Sales for Receivers, Liquidators, High Court & County Court. Auction Sales on Site or at The Grantham Auction Rooms for private and public clients alike.



AGRICULTURAL

Our Senior Partner has wide experience in the sale and valuation of Agricultural Properties, conducting Farm Sales and Valuation of Live and Dead Farming Stock for dissolution, Probate and other matters. Together with Rent Reviews, Development Land reports and Annual Stocktaking Valuations.



FINANCIAL SERVICES

Our Experienced Consultant is available to advise on all matters concerning Finance, Mortgages, Insurance, Investment, Planning and Pensions.



PROPERTY MANAGEMENT

Personal service and attention to detail ensures that our management team exploits your investment portfolio whether an Individual Family Home let for a small fee or Office, Factory, Shop or Farm with rent collected and regular inspections made.

Chattels Auctioneer

Colin R. Young FNAVA

Property Management

Mrs. Margaret Pashley

Partners

C. Robin Hall FRICS FAIV

Ian J. Shaw FRICS FNAEA

Financial Service Consultant

John G. Stukins

Residential Sales Manager

Mrs. Jenny Diment FNAEA CPEA

Established 1900

- GOLDINGS -

THE GRANTHAM AUCTION ROOMS



A Shelley part Tea Service in our last sale
Sold for
£450

NEXT SALE
of
ANTIQUES & FINE ART
is on Wednesday, 6th December, 1995
Further entries invited until November 21st

THE COMPLETE AUCTION SERVICE

Auction Sales of Antiques, Fine Art, Collectables, Modern Furniture & Effects – Office, Shop & Catering Equipment
Vehicles – Plant & Agricultural Machinery – Stock-in-Trade – Business Assets – Liquidations & Receiverships
VALUATIONS undertaken for Insurance, Probate, Family Division and Sale purposes. Full HOUSE CLEARANCE facilities.