



Lincoln Fine Art Sale Review

Wednesday 23rd November 2022

**GOLDING YOUNG** EST  
1864



# Probate – Inheritance Tax Assessment

For many Executors and Trustees the responsibility of dealing with a deceased's Estate is a once-in-a-lifetime experience. You have to make a number of important decisions in a very short space of time and all when the loss is most difficult to come to terms with.

The position of Executor is an important one in law and has defined personal liability and responsibility. To exhibit due diligence to beneficiaries and more importantly HM Revenue & Customs, an Executor or advisor will instruct a firm Regulated by RICS.

Even if the estate will be taxed at 0%, a valuation remains an essential tool for an Executor. The inventory will still be used for identification of bequests, trust items, family division and proof of value.

Our valuations are prepared to the International Valuation Standards requirement of the 'Red Book'.

The report will cover sections of:

- Jewellery
- Vehicles
- Antiques, Fine Art & Collections
- General Furniture & Effects



## Removals – Household & Commercial

- Free Quotations
- Full Packing Service
- Suppliers of Packing Materials
- Shipping & Storage Arranged
- Antiques & Fine Art Specialists
- Specialist Piano Movers
- Office Movers

Contact Andrew Lowes on 07970 742577 for a quote  
or email [lowes@goldingyoung.com](mailto:lowes@goldingyoung.com)

[goldingyoung.com](http://goldingyoung.com)

# Review



**Peter Brannan (1926-1994).**  
By The Sea, oil on board, signed and dated (19)78, hand written luggage tag and paper label, Ex.12, one man show, 1978, Usher Art Gallery, £100, Robertson sale 2016, 26cm x 34cm.  
**SOLD for £600**



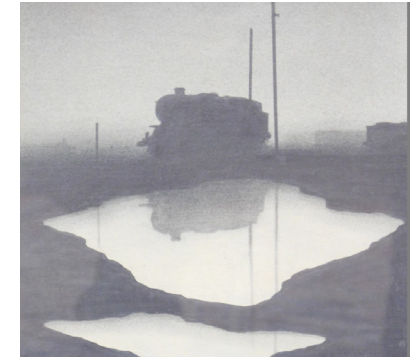
**Manner of Turner (19thC School).**  
Corfe Castle, oil on canvas, attributed to the frame, stencilled numbers to stretcher, 22cm x 28cm.  
**SOLD for £500**



**Laurence Stephen Lowry (1887-1976).**  
Great Ancoats Street, artist signed limited edition print, number 652/850, watermarked, 27cm x 36cm.  
**SOLD for £1,300**



**Andrzej Kuhn (1929-2014).**  
Night United, oil on board, signed, handwritten label verso from the artist's own collection, 120cm x 106cm.  
**SOLD for £2,400**



**Trevor Grimshaw (1947-2001).**  
Puddles and train with telegraph poles, pencil on paper, Colin Jellicoe Gallery, Manchester letter, stating it was used in an exhibition in 1975, 24cm x 19cm.  
**SOLD for £1,400**



**Manner of John Riley.**  
Portrait of Charles II three quarter profile wearing armour, oil on canvas, unsigned, 127cm x 96cm.  
**SOLD for £1,200**



**Trevor Grimshaw (1947-2001).**  
Train and bridge, pencil on paper, 16cm x 12cm.  
**SOLD for £900**



**James Paterson (1854-1932).**  
Amsterdam, The Last of the Indomitable, oil on canvas, signed, A F Armstrong Wellington Fine Arts, Glasgow receipt, dated 1974 and other ephemera, 53cm x 57cm.  
**SOLD for £4,000**



**Andrzej Kuhn (1929-2014).**  
In The Mountains Of Many Moons, oil on board, signed, titled verso and priced £2,000, (including decorative frame) overall 128cm x 127cm).  
**SOLD for £2,000**



**Trevor Grimshaw (1947-2001).**  
Church and factory landscape, pencil on paper, signed, 14cm x 16cm.  
**SOLD for £1,350**

# PRIVATE CLIENT & PROFESSIONAL SERVICE DEPARTMENT

We value personal property for private and corporate clients. Our team have valued family heirlooms, art collections and museum holdings for a variety of purposes.

We are the only auction house in the region to have a bespoke Private Client Department with:

- Three Chartered Arts & Antiques Surveyors
- Four RICS / Antiques Trade Gazette professional assessment award-winning valuers
- Two In-house qualified jewellery valuers
- Experience in abundance and diversity since 1864
- Ten professional staff with RICS, NAVA or SoFAA qualifications.



**For initial advice contact the following Chartered Auctioneers & Valuers:**

Bourne, Stamford & South Colin Young MRICS 01778 422686	Grantham, Lincoln & North William Gregory MRICS 01522 524984
---	--



# Review



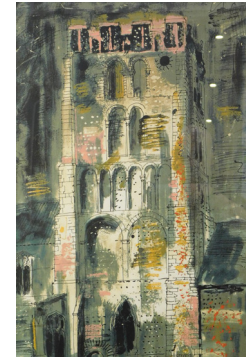
**Eileen Hogan (b.1946).**  
Bolingbroke Park 1, oil on board,  
initialled and dated 1985, John  
Leigh Gallery, Womersley, Guildford  
label verso, 101cm x 94cm.  
**SOLD for £1,000**



**Peter Brannan (1926-1994).**  
Still life, copper lustre jug and  
paint pot before rocking horse, oil  
on board, signed and dated (19)79,  
label verso ex 37 at 1980 Willoughby  
Memorial Hall, £260 on loan to  
Newark Museum 2015-2019 and  
numbered 37, 29cm x 31cm.  
**SOLD for £500**



**Trevor Grimshaw (1947-2001).**  
Train on a slope, pencil on paper,  
signed, 14cm x 14cm.  
**SOLD for £700**



**John Piper (1903-1992).**  
South Lopham Church, artist signed  
limited edition print, 57/70, with  
certificate verso, watermarked,  
93cm x 51cm.  
**SOLD for £750**



**After Andrzej Kuhn (1929-2014).**  
Figures In Moonlight, oil on board,  
101cm x 80cm.  
**SOLD for £500**



**Trevor Grimshaw (1947-2001).**  
Church and factory landscape with  
fence in the foreground, pencil on  
paper, signed, 19cm x 24cm.  
**SOLD for £1,500**



**Bessie Bamber (1870-1910).**  
Kittens and vase, oil on board,  
initialled and numbered 102, 15cm  
x 21cm and another, Kittens in a  
basket, initialled BB - pair. (2)  
**SOLD for £1,400**



**Bessie Bamber (1870-1910).**  
Kittens beside vase and bowl, oil  
on canvas, initialled and another,  
Kittens, book and vase, initialled,  
17cm x 24cm - pair. (2)  
**SOLD for £1,300**



**Bessie Bamber (1870-1910).**  
Kittens, comport and fruit on a  
table, oil on board, initialled, 15cm  
x 19cm and another, Kittens and  
books - pair. (2)  
**SOLD for £1,400**



**Trevor Grimshaw (1947-2001).**  
Fence before train, pencil on paper,  
signed, 19cm x 18cm.  
**SOLD for £1,100**

## Thinking of selling?

Executors, solicitors, accountants, insurers, corporations and government departments, have to exhibit due diligence when instructing. Use this checklist to do the same, with a few reasons why you may wish to choose us.

### We are regulated by RICS

Better Regulation for Us. Better Protection for You.  
Accept Nothing Less.

### Our online catalogues

For over 20 years our catalogues have been online and our experience ensures they are placed in front of the right buyers in the global market.

### Our sales results

July 2020 saw our 141st consecutive month with a sale at either Bourne, Grantham or Lincoln producing a sold rate of over 90%. Good advice, great results for hundreds of vendors every month.

**Join their success with an entry in our next sale!**

# A firm of the highest standing

Being a firm of Chartered Auctioneers & Valuers means that we have not only qualified to the highest standard in the profession, but have to maintain those standards. The first due diligence check any professional makes when needing a formal valuation, or simply selling at auction is for The Hallmark of a Chartered Auctioneer & Valuer - Regulated by RICS.

## RICS

The Royal Institution of Chartered Surveyors is the professional body that has been responsible for The Auctioneers Charter since 1970. All members have to complete at least 20 hours CPD or Continued Professional Development every year. All valuation work is prepared to the RICS Red Book requirements incorporating the International Valuation Standards (IVSC) Client Accounting. All client money has to be held in dedicated, ring-fenced accounts with a full audit trail.

## NAVA Propertymark

The National Association of Valuers and Auctioneers are an important body within the auctioneering and valuation profession, specifically in our case relating to the sale of chattels or personal property. All members have to complete at least 12 hours CPD or Continued Professional Development every year. They work with auctioneers and consumers alike, to offer regulation and guidance. Membership also provides for Primary Authority with Trading Standards to ensure clarity and understanding.

## SoFAA

The Society of Fine Art Auctioneers, formed in 1973, as the name suggests, is a society that exclusively represents the interests of the leading fine art auctioneers in the UK helping them provide the best service to clients. With this level of qualification and accreditation within the firm we pride ourselves on providing a reliable and professional service to get it right.



#### The Bourne Auction Rooms

Spalding Road, Bourne,

Lincolnshire PE10 9LE

E: [bourne@goldingyoung.com](mailto:bourne@goldingyoung.com)

T: +44 (0) 1778 422686

F: +44 (0) 1778 425726

#### The Grantham Auction Rooms

Old Wharf Road, Grantham,

Lincolnshire NG31 7AA

E: [grantham@goldingyoung.com](mailto:grantham@goldingyoung.com)

T: +44 (0) 1476 565118

F: +44 (0) 1476 561475

#### The Lincoln Auction Rooms

Thos Mawer House, Station Road

North Hykeham, Lincoln LN6 3QY

E: [lincoln@goldingyoung.com](mailto:lincoln@goldingyoung.com)

T: +44 (0) 1522 524984

F: +44 (0) 1522 681804

#### The Leicester & Midlands Office

E: [leicester@goldingyoung.com](mailto:leicester@goldingyoung.com)

T: +44 (0) 116 473 5735

#### London & South Valuations

E: [london@goldingyoung.com](mailto:london@goldingyoung.com)

T: +44 (0) 203 301 1007

#### The Louth & Wolds Office

E: [louth@goldingyoung.com](mailto:louth@goldingyoung.com)

T: +44 (0) 1507 661864

#### The Stamford & Rutland Office

E: [stamford@goldingyoung.com](mailto:stamford@goldingyoung.com)

T: +44 (0) 1780 7516