



Lincoln Fine Art Sale Review

Wednesday 25th August 2021

**GOLDING YOUNG** EST  
1864

# Probate – Inheritance Tax Assessment

For many Executors and Trustees the responsibility of dealing with a deceased's Estate is a once-in-a-lifetime experience. You have to make a number of important decisions in a very short space of time and all when the loss is most difficult to come to terms with.

The position of Executor is an important one in law and has defined personal liability and responsibility. To exhibit due diligence to beneficiaries and more importantly HM Revenue & Customs, an Executor or advisor will instruct a firm Regulated by RICS.

Even if the estate will be taxed at 0%, a valuation remains an essential tool for an Executor. The inventory will still be used for identification of bequests, trust items, family division and proof of value.

Our valuations are prepared to the International Valuation Standards requirement of the 'Red Book'.

The report will cover sections of:

- Jewellery
- Vehicles
- Antiques, Fine Art & Collections
- General Furniture & Effects



## Removals – Household & Commercial

- Free Quotations
- Full Packing Service
- Suppliers of Packing Materials
- Shipping & Storage Arranged
- Antiques & Fine Art Specialists
- Specialist Piano Movers
- Office Movers

Contact Andrew Lowes on 07970 742577 for a quote  
or email [lowes@goldingyoung.com](mailto:lowes@goldingyoung.com)

[goldingyoung.com](http://goldingyoung.com)

# Review



**David Blackburn M.B.E. (1939-2016).**  
**The Edge of the Sea**, mixed media, signed and dated 1988, titled verso, 44cm x 34cm. Label verso Hart Gallery, London, Hart South-West, Nottingham.  
**SOLD for £500**



**Margaret Mellis (1914-2019).**  
**Poppy, Arum, Iris**, pastel on paper, signed and titled verso, 30cm x 24cm. Mellis stamp verso.  
**SOLD for £1,300**



**Evelyn May Gibbs (1905-1991).**  
**Hatted woman, net mender**, oil on board, signed, titled verso, 29cm x 39cm. Artist label verso.  
**SOLD for £550**



**Roger Cecil (1942-2015).**  
**May**, mixed media on card, titled verso, 21cm x 17cm. Label verso The New Academy Gallery, Fitzrovia, London.  
**SOLD for £700**



**Norman Wilkinson (1878-1971).**  
**St. Pauls from the Thames**, oil on canvas, signed, 59.5cm x 80.5cm.  
**SOLD for £3,600**



**Norman Wilkinson (1878-1971).**  
**Sailing boat at Needles lighthouse**, oil on canvas, signed, 49cm x 59cm.  
**SOLD for £750**



**Neil Cox (b.1955).**  
**Pheasants foraging in bracken**, oil on canvas, signed, 59.5cm x 75cm. Provenance: Christies Lot 190 23 November 2006.  
**SOLD for £550**



**William Mellor (1851-1931).**  
**On the Wharfe nr Bolton Woods**, On the Llugwy, North Wales, oil on canvas - pair, signed, titled on mount, 40cm x 60cm.  
**SOLD for £2,600**



**Henry Murch (1824-1890).**  
**(After Canaletto) An early 18thC view over a church towards a campanile with figures in the foreground beside a Roman temple**, oil on canvas, initialled and dated 1854, 53cm x 68cm.  
**SOLD for £2,200**



**William Edward Millner (1849-1891).**  
**The day of rest**, oil on canvas, initialled and titled verso, 34.5cm x 62cm.  
**SOLD for £460**

# Review



**19thC School.**  
Head and shoulders portrait of a young woman, oil on canvas, 31.5cm x 24.5cm.  
**SOLD for £260**



**Ken Howard (b.1932).**  
St. Quees (?) bay, watercolour, signed, titled and dated (19)80, 17.5cm x 26.5cm.  
**SOLD for £340**



**Cecil Aldin (1870-1935).**  
The Cottesbrook Hunt - Forward away, Nearing the end, The Brook, The meet at the Swan, At find in the gorse, The dinner at the hall, a set of six artist signed coloured prints, 58cm x 82cm.  
**SOLD for £1,000**



**20thC School.**  
Vase, ceramic, three crescent motif, 39.5cm high.  
**SOLD for £320**



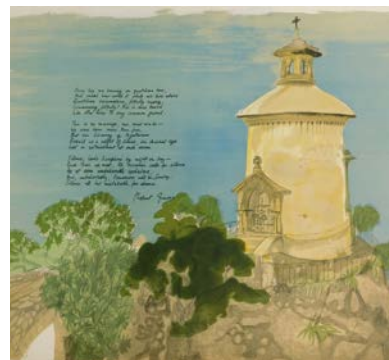
**Thomas Earl (1815-1885).**  
Study of a begging rough coated terrier, oil on canvas (relined), unsigned but old label verso to identify artist and possible date of '68, 52cm x 46cm.  
**SOLD for £650**



**Mary Martin (b.1951).**  
Daffodils, oil on board, signed and dated (19)91, 55cm x 45cm.  
**SOLD for £440**



**Ann Arnold (20thC).**  
Mr Lock in the Rain, oil on canvas, signed and titled verso, 31cm x 41cm and another titled The Brewer on the Bridge.  
**SOLD for £440**



**Robert Graves and Paul Hogarth.**  
Deya - A portfolio of five poems and lithographs published Motif Editions London 1972, 1 folio.  
**SOLD for £600**



**G. Williams (20thC).**  
Coach and Horses, oil on board, signed, 20cm x 25.5cm plus two others by the same artist.  
**SOLD for £300**



**Keith Tovey (1932-2008).**  
Dog resting, oil on canvas, signed, 28.5cm x 39cm.  
**SOLD for £260**

# A firm of the highest standing

Being a firm of Chartered Auctioneers & Valuers means that we have not only qualified to the highest standard in the profession, but have to maintain those standards. The first due diligence check any professional makes when needing a formal valuation, or simply selling at auction is for The Hallmark of a Chartered Auctioneer & Valuer - Regulated by RICS.

## RICS

The Royal Institution of Chartered Surveyors is the professional body that has been responsible for The Auctioneers Charter since 1970. All members have to complete at least 20 hours CPD or Continued Professional Development every year. All valuation work is prepared to the RICS Red Book requirements incorporating the International Valuation Standards (IVSC) Client Accounting. All client money has to be held in dedicated, ring-fenced accounts with a full audit trail.

## NAVA Propertymark

The National Association of Valuers and Auctioneers are an important body within the auctioneering and valuation profession, specifically in our case relating to the sale of chattels or personal property. All members have to complete at least 12 hours CPD or Continued Professional Development every year. They work with auctioneers and consumers alike, to offer regulation and guidance. Membership also provides for Primary Authority with Trading Standards to ensure clarity and understanding.

## SoFAA

The Society of Fine Art Auctioneers, formed in 1973, as the name suggests, is a society that exclusively represents the interests of the leading fine art auctioneers in the UK helping them provide the best service to clients. With this level of qualification and accreditation within the firm we pride ourselves on providing a reliable and professional service to get it right.



#### The Bourne Auction Rooms

Spalding Road, Bourne,  
Lincolnshire PE10 9LE

E: [bourne@goldingyoung.com](mailto:bourne@goldingyoung.com)

T: +44 (0) 1778 422686

F: +44 (0) 1778 425726

#### The Grantham Auction Rooms

Old Wharf Road, Grantham,  
Lincolnshire NG31 7AA

E: [grantham@goldingyoung.com](mailto:grantham@goldingyoung.com)

T: +44 (0) 1476 565118

F: +44 (0) 1476 561475

#### The Lincoln Auction Rooms

Thos Mawer House, Station Road  
North Hykeham, Lincoln LN6 3QY

E: [lincoln@goldingyoung.com](mailto:lincoln@goldingyoung.com)

T: +44 (0) 1522 524984

F: +44 (0) 1522 681804

#### The Leicester & Midlands Office

E: [leicester@goldingyoung.com](mailto:leicester@goldingyoung.com)

T: +44 (0) 116 473 5735

#### London & South Valuations

E: [london@goldingyoung.com](mailto:london@goldingyoung.com)

T: +44 (0) 203 301 1007

#### The Louth & Wolds Office

E: [louth@goldingyoung.com](mailto:louth@goldingyoung.com)

T: +44 (0) 1507 661864

#### The Stamford & Rutland Office

E: [stamford@goldingyoung.com](mailto:stamford@goldingyoung.com)

T: +44 (0) 1780 7516