



EST
1864

GOLDING YOUNG

Fine Ceramics & Asian Art Sale
Thursday 3rd January 2019



CHARTERED AUCTIONEERS & VALUERS • ARTS & ANTIQUES SURVEYORS

PROBATE – INHERITANCE TAX ASSESSMENT

For many Executors and Trustees the responsibility of dealing with a deceased's Estate is a once-in-a-lifetime experience. You have to make a number of important decisions in a very short space of time and all when the loss is most difficult to come to terms with.

The position of Executor is an important one in law and has defined personal liability and responsibility. To exhibit due diligence to beneficiaries and more importantly HM Revenue & Customs, an Executor or advisor will instruct a firm Regulated by RICS.

Even if the estate will be taxed at 0%, a valuation remains an essential tool for an Executor. The inventory will still be used for identification of bequests, trust items, family division and proof of value.

Our valuations are prepared to the International Valuation Standards requirement of the 'Red Book'.

The report will cover sections of:

- Jewellery
- Vehicles
- Antiques, Fine Art & Collections
- General Furniture & Effects



For initial advice contact the following Chartered Auctioneers & Valuers:

Bourne, Stamford & South
Colin Young MRICS
01778 422686

Grantham, Lincoln & North
William Gregory MRICS
01522 524984



Removals – Household & Commercial

- Free Quotations
- Full Packing Service
- Suppliers of Packing Materials
- Shipping & Storage Arranged
- Antiques & Fine Art Specialists
- Specialist Piano Movers
- Office Movers

Contact Andrew Lowes on 07970 742577 for a quote
or email lowes@goldingyoung.com

goldingyoung.com

PRIVATE CLIENT & PROFESSIONAL SERVICE DEPARTMENT

We value personal property for private and corporate clients. Our team have valued family heirlooms, art collections and museum holdings for a variety of purposes.

We are the only auction house in the region to have a bespoke Private Client Department with:

- Four Chartered Arts & Antiques Surveyors
- Two RICS/ Antiques Trade Gazette professional assessment award-winning valuers
- Two In-house qualified jewellery valuers
- Experience in abundance and diversity since 1864
- Ten professional staff with RICS, NAVA or SoFAA qualifications.



The Grantham Ceramics & Asian Art Sale

Thursday 3rd January 2019
At The Grantham Auction Rooms
Sale commences at 6pm

Viewing: Wednesday 2nd January 10am-4pm
and Saleday 8.30am-10am & 5pm-6pm

All enquiries on 01476 565118
Ceramics – Craig Bewick MRICS FNAVA
Asian Art – Colin Young MRICS FNAVA ASFAV

Front cover images:

Top: Lot 3179. A 19thC Rockingham marked porcelain tea service, c.1860. (38 pieces)

Bottom: Lot 3133. A Chinese Archaistic Archaic bronze type vessel, 18cm H.

Grantham Ceramics & Asian Art Sale

3001.
An 18thC Worcester porcelain slop bowl, c.1770, decorated with a figure holding a coffee pot, a dancing figure and another playing a horn, unmarked, 15cm dia.

3003.
An early 20thC Noritake breakfast cup and saucer, c.1900, decorated with tooled gilding on a bronze ground above birds in cherry blossom with oriental figures to the centre of the saucer and base of cup, bronzed bamboo handle, seal mark to the cup and eight character mark to saucer, 10cm dia.



3002.
A late 18thC New Hall porcelain fluted part tea service, c.1790, pattern no. 153, in a blue ground, with gilt stars and dots and gilt swags below, consisting of a hop conical creamer, teapot and cover, slop bowl, three tea bowls and four saucers, pattern No. marked in red. (11 pieces)



3005.
A late 19thC Japanese Satsuma part tea set, c.1880, consisting of a teapot and cover, sucrier and cover, creamer and cover, three tea cups and saucers moulded with dragons, dragon finials and handles, the body decorated with oriental figures, seal marks beneath. (12 pieces)

3004.
An early 20thC Noritake porcelain tea cup and saucer, c.1900, painted with a quail with her chicks within an oriental landscape, both pieces with seven character mark, cup 10cm dia.

3006.
A set of three oriental pottery figures of immortals, of large size, c.1900, unmarked, the largest 22.5cm H. (3)



3007.
A pair of late 19thC Moore Brothers white glazed vases, modelled as putti pulling a cornucopia, both marked Moores 33, 17cm H. (2)

3008.
A Berlin porcelain and Parian candelabrum, modelled as a putti below a rococo scone, with applied flowers, 36cm H. (2)

3009.
A Royal Worcester blush ivory centre vase and cover, decorated by Edward Raby, c.1892, shape code 1481, and a flower group of poppies and butterflies, 48cm H. (2 pieces)

3010.
A Royal Worcester pierced vase, decorated by Harry Stinton with highland cattle, signed, green factory mark, signed H Stinton, shape code 42, 23cm H.

3011.
A Royal Worcester blush ivory centre vase and cover, of large proportion, c.1891, decorated with poppies and insects, puce Worcester factory shape code 1517, unsigned, 15cm H. (2 pieces)



3012.
A 19thC Spode pottery blue and white toast rack, of boat shape with pierced supports, printed in blue and white with flowers and roses, impressed and printed Spode marks, 25cm W.



3013.
A Chinese porcelain sang de boeuf vase, with compressed stem, shouldered body and circular foot, unmarked, 25cm H.

3014.
A Chinese Ming style blue and white ginger jar, with an upper Greek key style decoration, the main body decorated with fern leaves in a geometric pattern, on a circular foot, with double blue line mark beneath, 18thC, 25cm H.

3015.
A Chinese porcelain bowl and cover, profusely decorated with flowers, predominately in pink, green and yellow, on a blue ground, red seal mark beneath, probably late Qing period, 19cm dia. (AF)

3016.
A matched pair of Chinese Archaistic Archaic style bronze ritual wine vessels, each with trumpet tops raised with a repeat geometric pattern on circular feet., 25cm H, Shang style, but Qing period, (AF)

3017.
A 19thC Chinese embroidered bag, with Peking glass ring handles, the material section profusely raised and decorated with a wire work style bird and flower motif, in green, white and blue, on a black ground, 29cm H.

3018.
A Royal Worcester two handled baluster vase, decorated by James Stinton, painted with a cock pheasant, signed JAS Stinton, shape 1034, puce mark for 1909, 9cm H.

3019.
A Royal Worcester two handled vase,
decorated by James Stinton,
painted with a cock pheasant,
signed *JAS Stinton*, puce marked,
shape 2021, 13cm H.

3020.
A Royal Worcester two handled vase,
decorated by James Stinton,
painted with a cock pheasant,
signed *JAS Stinton*, shape code
G995, black mark for 1906,
15cm H.

3021.
A Royal Worcester trumpet shaped vase,
decorated by James Stinton,
painted with cock pheasant,
signed *JAS Stinton*, shape G923,
purple mark for 1938, 11.5cm H.

3022.
A Royal Worcester two handled vase,
decorated by James Stinton,
painted with a cock pheasant,
signed *JAS Stinton*, puce mark for
1917, 16cm H.

3023.
A Royal Worcester large tulip vase,
decorated by James Stinton,
painted with a cock pheasant,
signed *JAS Stinton*, shape G1047,
green mark for 1899, 22cm H.

3024.
A Royal Worcester loving cup,
decorated by James Stinton, with
pheasant in landscape, signed *JAS Stinton*, on a royal blue ground,
puce mark for 1919, 16cm H.

3025.
A late 19thC Royal Worcester porcelain vase,
decorated by James Stinton, with
compressed trumpet stem
shouldered body and circular gilt
lined foot, hand painted with
pheasants in an autumnal scene,
signed *JAS Stinton*, no.2491,
printed marks beneath, 16cm H.
(AF)

3026.
An early 20thC Royal Worcester hand painted porcelain vase,
decorated by James Stinton,
c.1906, with pierced rim, inverted
bulbous body and acanthus leaf
base, hand painted with pheasant
in an autumnal scene, signed
Stinton, no. G1061, printed marks
beneath, 14cm H.

3027.
A late 19thC Wedgwood light blue Jasperware jardinière,
with an upper flowerhead border,
the main body raised with
garlands and acanthus leaves
broken by lion's mask ring
mouldings, with further classical
figures beneath, on a circular foot
with separate drainer stand,
impressed mark WEDGWOOD
beneath, 26cm H, 21cm dia.

3028.
A late 19thC Wedgwood dark blue Jasperware jardinière,
of large proportion, the circular
bowl raised with an upper
flowerhead border, the main body
decorated with garlands broken
by lion's mask ring mouldings,
with classical figures beneath, on
a circular foot, impressed mark
WEDGWOOD ENGLAND
beneath, 25cm H, 27cm dia.



▲ **3029.**
A Chinese porcelain vase,
Wanli six character mark
beneath, of garlic shape, with
inverted stem and bulbous
body, richly glazed in a deep
blue, with a raised unglazed
biscuit dragon decoration, on a
circular foot, double blue
circular six character mark
beneath, 28cm H.

3030.
A circular wooden box,
with mother of pearl inlay, with a
removable lid and inner section,
on a circular foot with
overhanging base, profusely
decorated with flowers and
butterflies, probably Japanese,
11cm H, 24cm dia.

3031.
A Chinese polished green jade vase and cover,
with shaped lid, carved stylized
lotus flower body headed by
figure and shaped foot, with
wooden stick dropper, 14cm H.

3032.
An 18thC Worcester blue and white saucer dish,
c.1785, printed in blue and white
with a version of The
Conversation, pattern disguised
numeral marks, 18cm dia.

3033.
A Caughley lobed shaped dessert dish,
c.1780, painted with the Weir
pattern, workman's mark to the
foot rim, 26cm W.

3034.
Two Caughley polychrome fluted coffee cups,
c.1780, one decorated with a
internal gilt band of foliage, the
other with a blue band and gilt
foliage, unmarked, 6cm H. (2)



▲ **3035.**
An 18thC Worcester blue and white porcelain sauce boat,
c.1770, unmarked, 15cm W.

3036.
An 18thC Derbyshire porcelain teapot and cover,
c.1775, with elaborate handle
decorated with floral sprays,
15cm H. (AF)

3037.
An early 19thC New Hall type teapot and cover,
c.1800, decorated with an
elaborate border pattern and
floral sprays, unmarked, 15cm H.

3038.
A large 18thC Derby porcelain figural candlestick,
c.1775, on a rococo design base,
the female figure carrying a
basket of flowers, patch mark,
33cm H.

3039.
A Moorcroft Puffin pattern vase,
decorated by Carol Lovett, tube
line decoration, fully marked,
26cm H.

3040.
A 20thC Parian Goss bust of a Scottish figure,
black W H Goss mark, 13cm H.



▲ **3041.**
An 18thC Derby porcelain model of sheep,
c.1770, patch mark, 10cm H.

3042.
A New Hall type porcelain spiral fluted teapot and cover,
c.1800, decorated with floral
swags and sprays, marked pattern
no. 146 in puce, 15cm H.

3043.
An 18thC New Hall porcelain fluted coffee cup,
c.1785, decorated with floral
sprays with a blue and puce
border, 6cm H, unmarked.

3044.
An 18th Caughley porcelain artichoke/mustard pot cover,
decorated with blue sprays with a
broad blue band, c.1780, 6.5cm dia.

Grantham Ceramics & Asian Art Sale

3045.
Two New Hall porcelain coffee cups,
c.1785, one cup with clip handle
and decorated with a single gilt
line and gilt swag, the other with
a broad band of puce red and
gold flowers, 6cm H. (2)



▲ **3046.**
A New Hall porcelain
saucer,
c.1800, printed in blue and
white with a New Hall copy of
the Caughley Willow Nankin
pattern, 13cm dia.

3047.
A New Hall porcelain coffee
can,
c.1800, decorated in blue and gilt
with an elaborate pattern of swirls
and red swags, pattern no. 623,
6cm H.

3048.
A New Hall porcelain saucer
dish,
of fluted form decorated with a
blue band and C scroll gilding,
marked pattern no. 554, 20cm dia.,
and a Coalport creamer. (2 pieces)

3049.
A Caughley blue and white
porcelain tureen stand,
c.1790, decorated with The
Conversation pattern, 24cm W.
Ex. Willow Collection.

3050.
A pair of Derby porcelain
cherubs,
on rococo bases, patch mark,
18cm H. (2, AF)

3051.
A Royal Worcester blush
ivory demi tasse cup and
saucer,
c.1900, saucer 9cm dia.

3052.
A pair of 19thC Scottish
pottery sponge ware
tankards,
each of cylindrical outline,
decorated with a repeat broken
banding of red robin and holly
leaves with a upper floral banding
in purple, red and green on cream
ground, on moulded bases with
plain handles, possibly
Portobello, 12cm H. (2)



▲ **3053.**
A late 18thC Derby
porcelain shell shaped
dish,
c.1790, made as a replacement
or addition to the original
Chinese export service
decorated with the arms of the
Greasley family, within an
oriental inspired border of
pagodas and butterflies,
unmarked, 24cm. (AF)

3054.
An oriental soapstone model
of an elephant,
c.1900, 7cm long, and a Chinese
coffee cup decorated with
European style flower sprays,
including roses and tulips, c.1780,
6cm H.



▲ **3055.**
A Samson copy of a red
marked period Derby
coffee cup and saucer,
c.1900 decorated with a square
panel of flowers on a
mushroom ground surround
with gilt wheat foliate border,
faux gold Derby mark, 6cm H.
(2)



▲ **3056.**
A large pair of 19thC
Parian figures,
c.1860, of children playing hide
and seek, the male figure
blindfolded, both figures on a
circular base, unmarked,
20cm H.



▲ **3057.**
An 18thC Derby porcelain
Rothschild Service centre
dish,
c.1785, decorated with a centre
panel of finely painted English
flowers within a Smith blue
and gilt border, puce Derby
mark and pattern no. 100,
gilders no.2 Thomas Soar,
31.5cm W.
From the Rothschild banking
family.

3058.
An oriental figure of a girl,
carved from rock crystal, on a
block marble base, c.1900,
unmarked, overall 10cm long.

3059.
An early 19thC Coalport
porcelain cup and saucer,
c.1820, decorated with exotic birds
within a landscape and exotic
birds holding a floral garland, all
within a fine rococo gilt border,
probably by Thomas Martin
Randall, 6cm H.

3060.
An 18thC Worcester
porcelain bowl,
c.1775, decorated in the oriental
style, with puce monochrome
roses, unmarked, 15cm dia.



▲ **3061.**
A Derby porcelain basket
moulded plate,
decorated with hand painted
with floral sprays, in the style
of Leonard Lead, red Derby
mark, gilders no. 25 painted
no. 29, 20cm dia.

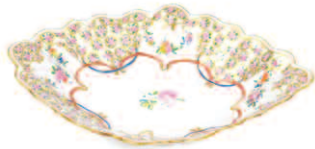
3062.
An early 19thC Spode teapot
and cover,
decorated with large flower
sprays on a blue scale ground,
unmarked, 28cm long, minor chip
to spout cover cracked.

3063.
An 18thC Derby porcelain
pot pouri vase cover,
c.1765, the pierced cover
surmounted with a large canary,
signs of patch marks, 9.6cm dia,
10cm H.

3064.
Four early 19thC Derby
porcelain coffee cans and
saucers,
1810-1835, one with kidney
shaped handle decorated with
gold ferns on a Smith blue ground
red mark, c.1810, ditto with a
square handle, 7cm H, another
Derby coffee can and saucer
decorated with a band of blue and
gilt grapes and vines with a
simple loop handle, gilder no. 47,
6cm H, another Derby coffee cup
and saucer decorated with a gilt
scrolling band with dark purple
flower heads and buds (copy of a
Flight, Barr & Barr Worcester
pattern), Gothic and crown over
D mark, c.1830, 6cm H. (8 pieces)

3065.
A late 19thC Crown Derby
porcelain cabinet plate,
c.1880, decorated with a bird on a
branch with cottage roses within a
elaborate salmon ground banding,
classical gilt columns and flower
heads raised paste gilding, black
mark for Crown Derby, 24cm dia.

3066.
A 20thC Derby porcelain cabinet plate,
c.1933/35, decorated with a fish and signed *W.E. Morley*, all within a gilt foliate border, puce Derby mark, 22cm dia.



▲ **3067.**
A large 18thC porcelain lozenge shaped centre dish,
c.1775, decorated with single rose within gilt cartwheel roundel above floral swags all above blue and puce C scrolls, blue mark, 31cm long.

3068.
A pair of early S & H King Street Derby porcelain octagonal coffee cups and saucers,
c.1900, Ref S & H, Derby marked, with a border of stylized sprigs in green, gold and puce, 5.5cm H. (4 pieces)

3069.
An early 19thC part French porcelain tea set,
c.1800, comprising of a teapot and cover, plate, four tea cups with square handles and six saucers, some pieces marked *NAST*, decorated gilt swags and roundels. (12 pieces)

3070.
An 18thC Chinese export porcelain coffee cup,
c.1780, decorated with roses and tulips, unmarked.



▲ **3071.**
A late 19thC King Street Derby Theatrical figure of Billy Waters,
c.1890, formed playing a fiddle and with a peg leg, inscribed *BILLY WATERS*, S & H Derby marked in puce, 10cm H. (AF)



▲ **3072.**
An early 18thC English Delft side plate,
c.1740, decorated in blue and manganese with stylized flowers, 17cm dia.

3073.
A 19thC porcelain greyhound stirrup cup,
c.1815, in Rockingham type glaze, 16cm long and a smaller stirrup cup in the form of a fox hound similarly glazed, c.1820/30, unmarked, 12cm W. (2 pieces)

3075.
A Royal Crown Derby porcelain cabinet plate,
decorated with birds and flowers, in reserves on a blue ground with raised paste gilding, signed *Cuthbert Greasley*, 22cm dia.



▲ **3076.**
An 18thC Chinese export porcelain armorial famille vert dish and cover,
of octagonal outline, decorated with coat of arms, flower heads and scrolls, with gilt highlights and, shaped mask handles, 13cm H.



▲ **3074.**
A Caughley part tea and coffee service,
c.1780 consisting of a teapot stand, seven fluted coffee cups and two tea bowls with eight saucers, decorated with gilt and grey feathers and flowers, footrims of the cups have been ground down. (18 pieces)

3077.
A 19thC cloisonné tea bowl and cover,
of tapering circular outline, profusely decorated with scrolls and flower heads, on a pink ground, broken by ovals, set with figures on a circular foot, 7cm H, 10cm dia. (AF)

3078.
A 19thC Chinese soapstone desk ornament,
formed as two dragons, on a rectangular platform base, 17cm H.

3079.
A 19thC Chinese soapstone desk ornament,
profusely carved with two dragons, on a square base, in liver and cream colours, unmarked, 16cm H.

3080.
A Chinese spinach jade vase,
of plain cylindrical outline, 8cm H.



▲ **3081.**
A Chinese red ware Yi Xing double teapot,
of cylindrical form with a shaped handle, the lid with a stylized fish handle, 11cm H.

3082.
A Chinese cast bronze censer,
bearing seal mark to the base, probably late Qing period, 11cm dia., 8cm H.

3083.
A fine Peking jade-green glass bowl,
on a turned hardwood stand, 17cm dia., 7.5cm H.

3084.
A Chinese bronze censer
of square section, relief moulded with kylin, and moulded kylin knop, reign mark to base, 11cm H.

3085.
Various Chinese blue and white saucers,
two with pagoda landscapes, 22cm dia., three with foliate design, 14cm dia., and two Japanese shaped dishes, 16cm dia. (7).

3086.
An 18thC Chinese export scalloped side dish,
decorated with pagodas and two men on a bridge in underglaze blue, 8cm W.

3087.
A Chinese redware Yi Xing teapot,
of hexagonal tapered form, seal mark to base, 7cm H.



▲ **3088.**
A Chinese porcelain vase,
of compressed baluster form, hand painted with panels of cats, flowers and trees, broken by fixed areas of flower heads and scrolls in raised enamels, on a circular turquoise foot with double line rounded square *Yongzheng* mark beneath, 17cm H.

3089.
A Chinese bowl,
the celadon glazed semi-translucent body having an oriental blue bird and flower moulded in relief and verso script, six character mark to base, 15.5cm dia. (AF)

3090.
A 19thC Chinese bottle vase,
pale glazed, undecorated, 18cm H. (AF)

Grantham Ceramics & Asian Art Sale



- ▲ **3091.**
A pair of Longton Hall rococo moulded vases with covers,
 c.1755, applied and painted with flowers, the scrolling handle with a leaf spray, typical damage to the flowers, 29cm H.
 Provenance: Sotheby's British & Irish ceramics sale on the 22nd May 1984 & Golding Young Grantham Collective Sale 5th June 2013.

- 3092.**
Three Furstenberg early 20thC white glaze porcelain figures,
 modelled as a man with vines, and two women with flowers and urn respectively, 19cm H. (3)



- ▲ **3093.**
A Derby heart shaped dish,
 c.1782/1800, hand painted to the centre of a scene titled verso *Near Matlock, Derbyshire* with a gilt floral and scroll outline, blue painted marks, 25cm W.

- 3094.**
An early 19thC English porcelain dish,
 possibly Coalport, with a shaped outline on a shell scroll handle centred by hand painted summer flowers, predominantly in pink, green and orange on a white ground with an outer blue and gilt highlighted banding, unmarked, 52cm W.

- 3095.**
A large pair of 19thC Davenport tapered beakers,
 with hand painted and gilt Imari panels, printed mark to base, 13.3cm H, and a Fieldings baluster vase, 15cm H. (3)

- 3096.**
A Chinese brass and champleve enamel cylinder vase and cover,
 with European stylised lion and shield cover, diaper work ground with bands of heraldic dragons, 28cm H.



- ▲ **3097.**
A pair of 19thC Chinese baluster vases and covers,
 decorated in famille vert Cantonese enamels depicting court scenes within reserves with birds and flora in vignettes to the shoulders and foot, 30cm H. (AF)

- 3098.**
An early 19thC Derby porcelain campana vase,
 c.1800, of campana form, decorated with panels of summer flowers, broken by gilt scrolls and flower heads, on a white ground, on circular foot, crowned crossed batons mark in red, 16cm H.

- 3099.**
A 19thC Derby porcelain vase,
 the urn shaped body set with a central hand painted panel of summer flowers, flanked by satyr mask handles on an inverted compressed stem and platform square base, unmarked, possibly Derby, 25cm H. (AF, handles lacking)

- 3100.**
A 19thC Chinese green and imperial yellow ground shouldered vase,
 the neck decorated with polychrome enamels of lappets and goat heads, with a banded body and foot, 25.5cm H. (AF)

- 3101.**
An early 20thC Chinese cloisonné casket,
 of flowerhead outline in yellow, decorated with panels of scholars and flowers predominately in pink, blue and green, on a circular foot, 6cm H, and an early 19thC blue and white pottery pickle dish, decorated with figures before a building. (2, AF)

- 3102.**
A Chinese Republic porcelain vase,
 with compressed trumpet stem, shouldered body and circular foot, profusely polychrome decorated with figures in flowing robes surrounded by tress and fences, pseudo red seal mark beneath, 26cm H, and various other oriental wares, Imari style plate, etc. (a quantity)

- 3103.**
A Chinese Ming style terracotta pottery figure of Buddha,
 in flowing robes aside child, partially decorated in green, unmarked, 20cm H, a similar figure of a scholar in flowing robes, and five others similar. (7)



- ▲ **3104.**
A Chinese T'ang style terracotta pottery figure,
 of a bearded sage in flowing robes predominately in yellow and green, on a shaped partially glazed base, 36cm H.

- 3105.**
A Chinese T'ang style terracotta pottery figure,
 of a bearded sage in flowing robes holding orb, predominately in yellow and green, on a shaped partially glazed base, 37cm H.

- 3106.**
A Chinese T'ang style terracotta pottery figure,
 of a bearded sage in flowing robes holding fly swat, predominately in yellow and green, on a shaped partially glazed base, 37cm H.

- 3107.**
A 19thC red lacquer box,
 with an articulated mesh work style wooden top, set with oriental roundels with gilt highlights on an overhanging square base, 13cm H, 24cm W, 23cm D.



- ▲ **3108.**
19thC School.
 A massive cloth and paper scroll decorated with figures of scholars, mixed media, pen, ink and wash, with double red seal mark, with script lettering, 31cm x 840cm (approx.)

- 3109.**
19thC School.
 Cloth scroll, children at play in naturalistic setting, mixed media, signed with seal mark, 270cm x 68cm.
£50-80

- 3110.**
19thC Oriental School.
 Trees and flowering buds, material and silk work on paper backing, signed with seal mark, 58cm x 37cm, on a larger scroll back.

- 3111.**
A late 19thC cloisonné box,
 of shaped oval outline, decorated with panels of figures and trees on a yellow ground with a floral banding, with removable lid, 11cm W, and a later enamel basket. (2)

- 3112.**
A Chinese terracotta pottery tomb style figure,
 of a standing lady in flowing robes, on a shaped partially glazed base, 18cm H, a Chinese pottery figure of a baby and two others similar. (4)

3113.
A Chinese patinated bronze bowl,
of circular outline raised with a double Greek key style banding and panels of figures, with circular six character raised mark beneath, probably late Qing period, 25cm dia.

3114.
A 18thC Chinese export blue and white plate,
of octagonal outline decorated with flowers, unmarked, 22cm W, and various soup bowls, plates and side plates marked WEXIO, in green transfer print. (a quantity)



▲ **3115.**
A Chinese Qing period porcelain charger,
six character Kangxi mark beneath, polychrome decorated with a view of flowers and birds, with an outer banding, predominately in green, yellow, blue and pink, with floral decoration verso, hand thrown, 42cm W.

3116.
Chinese Republic School.
Figure in flowing robes, another drawing sword, coloured rice paper drawings, 16cm x 10cm, and an Indian court scene. (3)



▲ **3117.**
20thC School.
Bird on flowering branch, silk work, mixed media, 34cm x 24cm.



▲ **3118.**
Oriental School.
Ducks in a landscape, watercolour, material backing, signed, 135cm x 75cm.

3119.
Oriental School.
Landscape, watercolour, signed with seal mark, on material backing, 140cm x 68cm.

3120.
An early 20thC Persian table mirror,
with bevelled glass flanked by cylindrical part pierced supports surmounted by urn finials, with baluster supports on a circular platform base, with front drawer on shaped feet, profusely decorated with a geometric pattern predominately in yellow, red and black lacquer finish, 63cm H.



▲ **3121.**
A Moroccan pottery charger,
probably Fez, of circular outline, blue ground with black tracery decoration, raised with applied white metal sections in a floral motif and raised diamond shaped centre, 36cm dia.

3122.
Spare Lot.

3122.
Spare Lot.



▲ **3124.**
An Archaistic Archaic style Chinese bronze Li-Ting three footed wine vessel,
with raised upper handles, the circular body profusely decorated with a repeat geometric pattern, on triple cylindrical supports, unmarked, Shang style, Qing period, 18cm H.



▲ **3125.**
A pair of 19thC faience tin glazed earthenware pottery Napoleonic candlesticks,
each with compressed square dish holders, cylindrical stems raised with eagles and Bonaparte N and garland crests, predominately decorated in yellow and green, unmarked, 21cm H. (2)

3126.
A green glazed pottery bowl,
of circular outline, 16cm dia., a 19thC porcelain candlestick handpainted with summer flowers with gilt highlights and two Copeland shell shaped open salts, undecorated with green marks beneath. (4, AF)

3127.
A 19thC Chinese carved softwood figure group,
of two ladies in flowing robes aside a mythical beast, on naturalistic base, 16cm H, and four various Chinese hardwood stands. (a quantity)

3128.
A 19thC Chinese cloisonné bowl,
of bellied circular outline, on a circular foot, with an upper geometric body, the main body decorated with flowers in yellow and green, broken by panels of interior scenes set with scholars, with Kangxi style flowerhead mark beneath, 11cm dia.

3129.
An early 20thC Coalport cabinet plate,
the centre handpainted with a scene of trees before lake, building and mountains, signed P Simpson, of shaped outline, on a blue ground with gilt highlights, the border broken by further panels of handpainted scenery, Waring & Gillow Limited crown mark and number beneath, 23cm W.

3130.
A Chinese blanc de chine porcelain figure,
of a lady wearing flowing robes, on a shaped scroll base, 40cm H, and three various other blanc de chine figures. (4)

3131.
A Chinese beaker,
on flared acanthus leaf base, the main body set with script and picked out in colours, unmarked metal, 9cm H.



▲ **3132.**
A Chinese beaker,
of tapering cylindrical outline, decorated with script, white metal, marked beneath, 9cm H, 8oz. (marks rubbed)

Grantham Ceramics & Asian Art Sale



- ▲ 3133.
A Chinese Archaic bronze type vessel,
formed with an articulated dragon's head, providing an opening to a plain interior, with shaped tail on quadruple claw supports, Shang type, Qing period, 18cm H.

3134.
Various Chinese hardwood stands,
to include one of rectangular heart pierced outline on scroll feet, 24cm W, a small red glazed chair, etc. (a quantity)

3135.
A pair of Chinese pottery Ming style figures,
of lady and gentleman, each in flowing robes, polychrome decorated in yellow and green, 35cm H, etc, and two other Ming style Chinese figures of a standing Buddha, and a further figure with hollow base. (5)

3136.
A pair of vases,
each of bulbous outline, with a repeat brick work decoration, white metal, marked AH800, 18cm H. (2)

3137.
A Chinese porcelain famille rose vase,
with compressed trumpet stem, shaped handles and bulbous body, heavily decorated with children playing blind man's buff, with mountains and trees in the distance, predominately in pink, purple and green, on a circular foot, unmarked, 33cm H.

3138.
A 19thC oriental design jug,
with pewter lid, the cylindrical tapering body decorated with exotic bird and flowers, with C scroll rope twist handle, unmarked, 26cm H.

3139.
A Chinese porcelain blue and white vase,
the compressed cylindrical top raised above a shouldered circular body, decorated with figure aside vase, with prunus type bird decoration on circular foot, four character mark beneath, late Qing period, 24cm H.

3140.
A Chinese porcelain vase,
the compressed trumpet stem, raised above a shouldered circular body, decorated with panels of figures, predominately in green and orange on a blue ground, on circular foot, four character mark beneath, late Qing period, 31cm H.



- ▲ 3141.
A late Meiji period Japanese pottery vase,
with shaped stem and ribbed body in brown glazes decorated with gilt highlighted flowers, red signature mark beneath, 30cm H.

3142.
A Middle Eastern metal vase,
of onion shape, decorated with a raised repeat geometric design overall, converted to electricity, 53cm H.

3143.
A Chinese Archaic style metal stand,
of circular outline with inner script and central geometric emblem, on a baize lined circular foot, probably Qing period, 17cm dia.

3144.
A pair of 19thC bronze jardinières,
each of compressed circular outline with an upper pierced floral scroll border, each main body raised with birds, flowers, trees and other foliage, on quadruple supports, unmarked, 25cm H, 33cm dia. (2, AF)

3145.
Two Middle Eastern polished bronze vessels,
each of cylindrical outline with lipped tops, heavily decorated with a repeat geometric scene, 8cm H, and an Indian figure of a polished elephant with rider. (3, AF)



- ▲ 3146.
An enamel panel,
probably Italian 19thC, of rectangular outline set with various figures before trees and mountains, polychrome decorated predominately in yellow, brown and green, in an outer wooden frame, unsigned, 22cm H, 13cm W, 2cm D.

3147.
A cased set of Chinese tiles,
in soft wood case set with four drawers with upper handles, 15cm H, each tile ebonised and raised with gilt lettering, with slide front to the cabinet, with paperwork. (a quantity, AF)

3148.
Three Palestinian open cast metal pots,
each of bulbous decoration with beak spouts and shaped handles, 17cm H, etc. (3, AF)

3149.
An oriental semi porcelain figure,
of a lady stood in flowing robes, polychrome decorated predominately in red, green, turquoise and yellow, unmarked, 32cm H.

3150.
A 18thC Chinese porcelain blue and white export meat platter,
of shaped oval outline, the central section decorated with flowerheads, trees, and insects, with an outer floral border, partially unglazed verso, 40cm W.



- ▲ 3151.
A Chinese export porcelain armorial dish,
of oval outline, partially pierced and centred with a coat of arms, with outer garland and floral scroll bead borders, 23cm W.



- ▲ 3152.
A Chinese Qing period porcelain snuff bottle,
of shouldered outline decorated with figure stacking branches, on a circular foot, in pink on cream ground, blue four character Chenghua style mark, 9cm H.

3153.
A set of six Chinese porcelain snuff bottle,
each of shouldered cylindrical outline, with squat stems, similarly decorated with trees, houses and foliage, double line banded bases, unmarked, 10cm H. (6)

3154.
A Chinese porcelain snuff bottle,
of shouldered outline, with compressed stem raised with characters and banding on a cream ground, on an oval foot, the seal mark hidden by a collector's label, 19thC, 9cm H.

3155.
A Chinese porcelain snuff bottle,
of shouldered outline with compressed top, raised with dragons, in pink and peach on a white ground, with an oval foot, painted four character mark beneath, 7cm H.



▲ **3156.**
Three various 19thC Chinese blue and white porcelain snuff bottles,
to include one with carved underside, decorated with many buildings, of shouldered outline, 7cm H, another set with figure, etc. (3)

3157.
A 19thC Chinese blue and white porcelain snuff bottle,
of shouldered outline with compressed top, profusely decorated with figure, trees and buildings, on a circular foot, unmarked, 9.5cm H.

3158.
A Chinese porcelain snuff bottle,
of inverted bulbous outline with a compressed stem, decorated with figures on a black ground, on circular foot, unmarked, 8cm H.

3159.
A glass perfume bottle,
of shouldered outline, profusely decorated with various figures in flowing robes, and a double gourd style glass perfume bottle. (2)

3160.
A Chinese blanc de chine porcelain snuff bottle,
of shouldered outline with compressed stem, decorated with horses, on a circular foot, unmarked, 8cm H, and another similar. (2, AF)



▲ **3161.**
A Chinese porcelain snuff bottle,
a polychrome decorated with insects and flowers, of stylized heart shaped outline on rectangular foot, red character mark beneath, 6cm H.

3162.
A Chinese porcelain snuff bottle,
of shouldered outline with compressed stem and cylindrical body, decorated with birds in gilt colours on a blue ground, on circular foot, unmarked, 10cm H.

3163.
A blanc de chine Chinese porcelain snuff bottle,
of shouldered circular outline, with compressed cylindrical stem and two further double gourd style snuff bottles. (3)

3164.
A Chinese porcelain enamel barrel,
polychrome decorated with figures, predominately in green, purple and orange, 6cm H, a further lid, a further miniature vessel and cover of similar design, together with a mother of pearl finish tray of shaped square outline, etc. (a quantity)

3165.
A Chinese snuff bottle,
of shouldered outline, marble decorated predominately in blue, brown and red, 10cm H, and two others of similar design. (3)

3166.
A Chinese porcelain snuff bottle,
decorated with a locust on a white ground, seal mark beneath, 6cm H, a shouldered snuff bottle, a cylindrical desk style seal, soapstone seal headed with dog of fo knop, etc. (a quantity)

3167.
Three various green jade dishes,
of polished circular outline, 8cm dia. (3)

3168.
An early 20thC snuff bottle,
handpainted with a front panel of a figure in boat before trees, with compressed yellow stopper, polychrome decorated with mark to the back, on an oval foot, probably Chinese, 7cm H.

3169.
A matched pair of porcelain tea bowls,
of small proportion, polychrome decorated with figures of geisha, predominately in yellow, black and blue, 6cm dia., seal mark beneath, a similar dish decorated with fish, etc. (4)

3170.
A Chinese Ming style blue and white jar and cover,
of cylindrical outline, profusely decorated with birds and flowers, the lid with an unglazed biscuit incised banding, unmarked, 12cm H.



▲ **3171.**
An early 19thC Derby porcelain platter,
c.1815, finely painted with English flower sprays, probably by Leonard Lead, red Derby mark, 39cm W.

3172.
A late 19thC Derby porcelain white glazed figure,
of Autumn with wheat sheaf and bee hive, c.1890, on a C scroll base, 22cm H.

3173.
A Commemorative wall plaque,
of Nicholas II and Alexandra Feodorovna, the centre with profiles of both within a border of musical and military trophies, and a Russian double headed eagle with oak leaves, impressed marks verso, 29cm dia. (2)



▲ **3174.**
An early 19thC Meissen porcelain cup and saucer,
decorated with a tiger within a stylized landscape, impressed number and crossed swords mark in blue, with decorators no.6, c.1800, 15cm dia.



▲ **3175.**
An 18thC green ground Worcester porcelain coffee cup,
c.1768, decorated with fruit by the spotted fruit painter, 6cm H.

3176.
A set of three mid 19thC porcelain pink ground reticulated plates,
with birds in a landscape, probably Thomas Martin Randall, c.1840, impressed marks, 24cm dia. (3 pieces)

3177.
An early 19thC Derby porcelain dinner plate,
decorated by Leonard Lead, with centre group of English flowers, red Derby mark, c.1815, gilders no. 20 and painters no.13, 25cm dia.

3178.
A mid 19thC Parian figure,
of an oriental figure holding a script, c.1850, 13cm H.

Grantham Ceramics & Asian Art Sale



- ▲ 3179.
A 19thC Rockingham marked porcelain tea service, to include teapot, cover and stand, two cake plates, creamer bowl, eleven side plates, nine cups and eleven saucers, puce Rockingham Griffin marked, c.1860. (38 pieces)



- ▲ 3180.
An 18thC Lowestoft porcelain cream boat, c.1765, decorated with printed flower groups, of small size, 14cm long.



- ▲ 3184.
A Japanese blue and white porcelain charger, of circular outline with an outer floral border, the centre decorated with further flowers, partially painted verso, single blue line and seal mark beneath, probably late Meiji period, 43cm dia.

3181.
A Japanese porcelain saucer dish, decorated with a heron in a water landscape, red seal mark, 22cm dia.

3182.
A pair of tall tea bowls and covers, a single Chinese bowl and a Chinese tea cup, c.1790. (5 pieces)

3183.
An 18thC Pennington Liverpool porcelain tea bowl, c.1770, 8cm dia.



3185.
A pair of champléve enamel style metal vases, each of bulbous outline with an upper and lower geometric banding predominately in blue and green, on circular feet, unmarked, 31cm H. (2)

- ▲ 3186.
A pair of Chinese Republic style porcelain vases, each with compressed trumpet stems, on shouldered bodies, polychrome decorated with building and trees before mountains, on circular feet, orange seal marked beneath, 20thC, 19cm H.



- ▲ 3187.
A pair of Chinese porcelain vases, each with compressed stems and animal handles, profusely decorated with flowers predominately in pink blue and green, on circular feet, blue seal marked beneath, 24cm H. (2)

3188.
A celadon vase, of shouldered circular outline, profusely decorated with birds and trees before hills, predominately in green, pink, orange and yellow, on a circular foot, D & S Howlett Collection label beneath, 20thC, 15cm H.

3189.
A Chinese Republic porcelain vase, of small proportion, polychrome decorated with figures, predominately in blue and orange, 11cm H, a lidded tea bowl, a ribbed vase of miniature outline, two blue and white saucers and a ginger jar with six character mark beneath. (a quantity)

3190.
A 19thC blue and white Chinese tea bowl, of circular outline with four character mark beneath, with D & S Howlett Collection label beneath, no.131, 7cm dia, and two blue and red Imari style tea bowls, one similarly labelled. (3)



- ▲ 3191.
A Chinese Kangxi style blue and white bowl, the interior decorated with flowers, with an outer brown glaze on circular foot, unmarked, D & S Howlett Collection label beneath, 19cm dia.

3192.
A pair of Chinese Peking glass vases, in white, each of shouldered circular outline, with removable pierced stained wooden lids, on similar heart shaped pierced bases, 33cm H.

3193.
A 19thC porcelain tea bowl, of circular outline, polychrome decorated in Imari colours, predominately in orange, blue and green, on a circular foot, a blue and white porcelain bowl, D & S Howlett Collection label beneath, no.502, and a Ming porcelain dish, of circular outline, 17cm dia. (3)

3194.
A Chinese cast metal teapot, of small proportion, with removable compressed lid, repoussé decorated with various figures, with plain spout and swing handle on a circular foot, circular 18thC style seal mark beneath, but later, 14cm H.

3195.
A Chinese brass vessel, of cylindrical outline, heavily cast with raised figures, vases, etc., 21cm W, and a cased pair of chopsticks. (2)

3196.
A Chinese biscuit pottery water vessel, with removable lid, circular body, part pierced handle and plain spout raised with panels to one side, seal mark beneath, 8cm H.

3197.
Various oriental porcelain plates, polychrome decorated predominately in pink, yellow and blue, with a Greek key border, 28cm dia., others similar, etc. (a quantity)

3198.
A Chinese porcelain bowl, of circular outline, decorated to the interior and exterior with flowers in red and blue, with a six character Chenghua mark beneath, but later, 16cm dia.

3199.
A Chinese porcelain dish, of circular outline, in the Ming style raised with moulded scrolls, the inner decorated in blue and white with an exotic bird and geometric pattern, on circular foot, further decoration and blue Kangxi style fungus mark beneath, 21cm dia.



- ▲ **3200.**
A Chinese porcelain dish,
of circular outline, decorated
in red and blue with a
geometric pattern broken by
exotic birds, on a circular foot,
partially decorated verso, six
character red Guangxu mark
beneath, 24cm dia.

3201.
**A Chinese porcelain blue and
white ginger jar and cover,**
of large proportion, the
compressed circular lid raised
above a shouldered circular body
decorated with panels of figures
in an external setting, broken by a
further prunus style repeat
pattern on blue ground, on
circular foot, double line mark
beneath, 27cm H. (AF)

3202.
A Chinese bronze censer,
of small proportion, the circular
body with upper moulded
pierced handles, on a tripod base,
six character Jiajiang style mark
beneath, 13cm dia.

3203.
An early 20thC enamel vase,
of small proportion, set with a
three clawed dragon in green on
turquoise textured ground, 14cm
H, and a Ming style celadon
glazed vase, on circular stand. (3)

3204.
**Two similar oriental
porcelain blue and white tea
bowls,**
of shaped outline, on circular feet,
unmarked, 6cm H, etc. (2)

3205.
**A large Chinese pottery Ming
style vase,**
with an acanthus leaf top and
bulbous body raised with a three
clawed dragon, on a circular foot,
unglazed, 38cm H.



- ▲ **3206.**
A 20thC porcelain tile,
probably Chinese, polychrome
decorated with a figure in
flowing robes, predominately
in blue, black, green and
yellow, signed with seal mark
verso, 15cm x 15cm.

3207.
**A Chinese porcelain tea
bowl,**
in the Kangxi style, of lipped
bellied circular outline, on a
circular foot, heavily decorated
with flowers within a floral
decoration with seal mark
beneath, with D & S Howlett
Collection label, 9cm dia.

3208.
**A Chinese blue white and
brown glazed bowl,**
the inner decorated with a
geometric pattern and various
exotic fish, with an outer brown
glaze decoration, on circular foot,
four character mark beneath, with
D & S Howlett label, 11cm dia.

3209.
**A Chinese export armorial
bowl,**
of circular outline with an inner
star banding, the exterior
decorated with coat of arms, with
gilt highlights on circular foot,
12cm dia. (AF)

3210.
**Two Cantonese porcelain
saucers,**
each decorated with figures in a
courtyard setting with buildings
in the distance, predominately in
orange, pink and purple,
13cm dia., a plainly decorated
bowl, and a further blue and
white saucer. (4)

3211.
**A Chinese porcelain Ming
style ginger jar and cover,**
of circular outline, heavily
decorated with figure and trees
before water and mountains, with
an upper geometric banding, with
(removable) compressed circular
lid, 18cm H.

3212.
**Various Chinese celadon
porcelain,**
to include a drainer with D & S
Howlett Collection label, a similar
labelled bowl and another lidded
example, partially ribbed, 10cm H.

3213.
An Imari porcelain vase,
probably Chinese Qing period,
the compressed trumpet stem
raised above a shouldered body,
profusely decorated with panels
of flowers with gilt highlights
predominately in red and blue,
unmarked, 30cm H.

3214.
**A late 19thC Japanese Imari
bowl,**
of flared outline, typically
decorated with flowers
predominately in blue and red,
21cm W, and a Chinese ginger jar
with double circle mark beneath,
with D & S Howlett label. (2)

3215.
**A Chinese semi porcelain
figure,**
of a cockerel in turquoise and
purple glazes, impressed marks
beneath, 35cm H.

3216.
**A Chinese blue and white
porcelain brush pot,**
of cylindrical outline, profusely
decorated with a figure in an
exterior setting, on a circular foot,
unmarked, 14cm H.

3217.
**Various oriental porcelain,
etc.,**
a blanc de chine figure of a seated
lady, of small proportion, 11cm H,
a blue and white teapot, miniature
vase and a further teapot. (4)

3218.
**An Imari porcelain well
bucket vessel,**
probably Chinese, with shaped
handle and cylindrical body,
typically decorated in red and
blue with gilt highlights,
unmarked, 19cm H.

3219.
An oriental pottery vase,
with cylindrical stem and bulbous
body, profusely decorated with
panels of flowers broken by
turquoise sections set with further
flowerheads, etc., predominately
in blue red and yellow, on a
circular foot, eight character mark
beneath, probably Japanese,
29cm H.

3220.
A Chinese vase,
of inverted shouldered circular
outline, in a green crackle glazed
with a repeat geometric pattern
and removable wooden lid,
unmarked, 24cm H.

3221.
**A Chinese redware pottery
part service,**
comprising of a teapot with
compressed circular lid, 14cm H,
sparsely decorated with flowers
predominately in blue and red,
with a ring and ear handle, on
compressed feet, seal mark
beneath, and three similar cups,
all unglazed. (4)



- ▲ **3222.**
A large Derby mask ale jug,
c.1775, with an unusual
decoration of grapes and
flowers in similar style to the
Egerton Service with two
principle large flower groups
and scattered insects, 22.5cm H.
(AF)

3223.
**A Chinese blue and white
pottery Ming style jar,**
of large proportion, with
unglazed top, the main body
decorated with flowers, with and
upper dot border, probably 18thC,
29cm H.



- ▲ **3224.**
A Royal Worcester vase,
decorated by James Stinton,
with pheasants in an autumnal
setting, with compressed
trumpet stem, scroll handles
and circular foot, pink marks
beneath, no.790, 23cm H.

Grantham Ceramics & Asian Art Sale

3225.
A Japanese Kutani pottery jardinière,
 of bellied circular outline, heavily decorated with geisha and children in a naturalistic setting before water and mountains, on a part glazed circular foot, red marks beneath, 23cm H, 35cm dia.



▲ **3226.**
A Chinese blue and white porcelain floor standing vase,
 the inverted square top, raised above a body raised with dragon, with cloud-like designs, on a square foot, four character mark beneath, probably 20thC, 61cm H.

3227.
19thC Japanese School.
 Figure seated in flowing robes, wood block print in colours, signed, 36cm x 26cm.



▲ **3228.**
19thC Japanese School.
 Figure of a Samurai on roof top, block print in colours, signed, 38cm x 25cm.

3229.
Utagawa Kunisada (Toyokuni III 1786-1864).
 Figure of a Samurai, block print, in colours, signed, 33cm x 25cm.

3230.
Early 20thC Japanese School.
 Storks before mountains, Japanese block print, in colours, signed, 25cm x 35cm.

3231.
Early 20thC Japanese School.
 Trees before mountains, block print, in colours, signed, 25cm x 36cm.

3232.
Early 20thC Japanese School.
 Figure in interior setting, block print, in colours, signed, 37cm x 25cm.

3233.
19thC Japanese School.
 Interior scene and another, figures climbing hill, block print, in colours, signed, 23cm x 36cm. (2)

3234.
Utagawa Kunisada (Toyokuni III 1786-1864).
 Figures with birds to the side, block print in colours, signed, 33cm x 24cm.



▲ **3235.**
A late 19thC Chinese ladies Xia Pei silk embroidered vest,
 on a blue ground, with a silk gauze, embroidered in gold coloured wrapper thread, with plain collars, birds to the shoulders, various birds and flowers to the panel section front, above dragons, in gilt red, moonlight blue and yellow, in floral red material, the hem hung with green netting suspending gilt metal orbs and multi-coloured silk tassels.

3236.
An early 20thC Chinese blue silk three quarter length Jifu court style robe,
 with a textured floral pattern and embroidered silk floral sleeves, with gilt metal orb fasteners, 110cm W.



▲ **3237.**
A Chinese silk ladies informal Jifu robe,
 probably late Qing period, in red silk with textured body, raised with panels of figures with gilt highlights.

3238.
A Chinese full size shoulder throw,
 probably early 20thC, in gold coloured wrapped thread in a repeat dragon pattern, Greek key style outline and woven green and blue line border, on a black ground, 220cm W.

3239.
A Chinese Qing period silk Jifu robe,
 in dark blue set with dragon and floral roundels, with a light blue lining and front gilt orb fasteners, 166cm W.

3240.
An early 20thC silk Jifu robe,
 with an embroidered floral part outline, on a black and turquoise ground raised with fish and set with elaborate gilt fasteners, with further delicate silk work floral embroidery to each shoulder, 133cm W.

3241.
An early 20thC silk open Jifu,
 in blue with repeat circle floral pattern and elaborate front orb fasteners, 126cm H.

3242.
A cream silk banner or throw,
 of gilt wirework floral decoration, of rectangular outline with red stripe to each end, 171cm W, and a small quantity of other items, headdress, etc. (a quantity)

3243.
A pair of Chinese silk work shoe covers and bases,
 each of shaped outline decorated with flowers, in Imperial style yellow, blue and purple on red ground, probably late 19thC, 14cm W. (2)

3244.
Various oriental silk skirts and material,
 to include a wrap around skirt, in pink with black flowers, 84cm H, another similar, etc. (a quantity)

3245.
An oriental silk cape,
 in red and Imperial type yellow colours decorated with Chinese lettering, probably 20thC, 124cm H.

3246.
A pair of Chinese silk panels,
 with upper fastenings, each decorated with butterflies predominately in blue, red and turquoise, with a red frilled section, probably late 19thC, 81cm H. (2)

3248.
Various late 19thC and other Chinese silk works,
 off cuts, epaulettes, bell pulls, florally set pieces, other gilt work sections, etc. (a quantity, various dimensions)

3249.
A pair of Eastern silk style shoes,
 of shaped outline with heels, in peach, with embroidered under sections, 13cm W, various other silk embroidered shoes, etc. (a quantity)



▲ **3250.**
An early 20thC silk Jifu court style robe,
 probably Chinese, with silk and gilt wire work decoration, with elaborate front metal orb fasteners, decorated with dragons and flowers predominately in green, gilt, blue and yellow, full length 150cm H.

3251.
Various Chinese silk work sections, pieces, etc.,
 an Indian style headdress with heavy gilt floral decoration, silk work, embroidered silk, floral silks, etc. (a quantity, various dimensions)

3252.
An early 20thC Chinese Qing period silk work jacket, with filigree style floral decoration predominately in blue, turquoise and pink, with a repeat embroidered decoration, 93cm H.

3253.
A Chinese silk jacket, probably early 20thC, in black and white floral pattern with a upper and lower stitched floral decoration and elaborate front fasteners, 63cm H, a further silk style flowing robe in blue raised with flowerheads, and a small quantity of silk material, chaps, etc. (a quantity)

3254.
An early 20thC oriental silk style throw, in red in yellow floral pattern, with green, yellow and blue highlights, and a similar designed throw in orange with raised Chinese lettering and flowers, predominately in orange, green, red and white.

3255.
Two part silk dress sections, probably Chinese decorated with dragons, on a gilt coloured silk ground. (2, various dimensions)

3256.
Various material silk work, throws, part clothing, mainly Chinese Qing period and later, parasol, etc., contained in a tin trunk, 47cm H, 76cm W, 56cm D. (a quantity)

3257.
An 18thC Chinese plate, of circular outline, polychrome decorated with figure on horseback before a further figure carrying sword, surrounded by flowerheads and foliage, polychrome decorated predominately in pink, yellow and green, 23cm dia., and a Kangxi style Chinese blue and white porcelain plate of circular outline with floral centre and flowerhead border, pseudo double circle mark verso. (2, AF)

3258.
Five similar Chinese celadon plates, polychrome decorated with butterflies, birds and flowerheads, in famille rose colours, predominately in pink, green and yellow, 19cm dia., blue seal marks beneath, all similar. (5)

3259.
19thC Indian School. Interior scene, with gilt highlights, in a heavily carved star, flowerhead and scroll frame, with shaped supports, with (later) metal hanger verso, 25cm H, 24cm W, 3cm D, and another similar, ivory and mixed media. (2 framed)

3260.
A Chinese Ming style blue and white porcelain dish, of circular outline with shallow centre, decorated with leaves and flowers in an outer scroll border, unmarked, Ming style but later 35cm dia.

3261.
A Chinese Ming style blue and white porcelain charger, with flowerhead outline decorated with ducks, leaves and reeds, with decorated back, 20thC marks verso, 39cm W, on an adjustable entwined wooden stand.

3262.
A Chinese blue and white porcelain charger, decorated with dragon with an outer geometric banding, partially decorated verso, on a circular foot, Kangxi style double line flowerhead mark verso, but later, 49cm dia.

3263.
A 20thC cloisonné vase, with trumpet stem and shouldered circular body, heavily decorated with five claw dragon, predominately in yellow, green, black and blue, with gilt highlights, on circular foot, 25cm H.

3264.
A 19thC Cantonese tea cup, with shaped handle, the circular bowl decorated with panels of figures in an interior setting, broken by further panels and flowerheads, in famille rose colours, predominately in pink, green, yellow and blue, on a circular foot, D Howlett collection label beneath, no. 341, 8cm H.

3265.
A Chinese Imari tankard, of cylindrical outline, with ear shaped handle, heavily decorated with buildings, cliffs and a seascape, in orange and blue, on a circular foot, 7cm H. (AF) See Christies 22nd June 1989 Monaco lot 66 for a similar item.

3266.
A Chinese porcelain canary yellow bowl, the bellied circular body raised with scrolls and flowerhead, on a circular foot, blue six character mark beneath, probably 20thC, 15cm dia.

3267.
Richard Sebright (1868-1951). Still life, wild grapes, pears and apples, watercolour, attributed verso. 16cm x 12cm. Richard Sebright is often considered the first Royal Worcester fruit painter.



▲ **3268.**
A Billingsley Mansfield decorated 18thC Worcester Barr, Flight & Barr quart jug, painted by William Billingsley at Mansfield 1799-1802, with sepia monochrome landscapes, gilt monogrammed J M L, 22cm H. See W D John, William Billingsley illustrations for a similar jug, but decorated with flowers, (illustration 59).



▲ **3269.**
A fine Derby porcelain centre dish, painted by William Billingsley, with fruit and flowers within a gilt star and rounded border, puce marked pattern no.157. For similar examples of this pattern see W D John, William Billingsley (illustrations 30A and 39A), overall 31cm W.



▲ **3270.**
A pair of 19thC Masons octagonal vases and covers, decorated with flowers and baskets, with blue dragon handles, Masons Patent Ironstone china mark, 38cm H.

3271.
Four reference books relating to William Billingsley, comprising The Pattern and Shapes of Pinxton China Factory 1796-1813, Exley (C) A History of the Torksey and Mansfield China Factory, Manchip (D) Not Just A Bed of Roses and The Bicentenary Catalogue of The Pinxton China Factory by the Pinxton Porcelain Society. (4)

3272.
Five vintage Sotheby's Fine Ceramic catalogues. (5)

3273.
Six vintage Sotheby's Fine Ceramics catalogues. (6)

3274.
Four vintage Christie's English and Welsh Ceramics catalogues. (4)

3275.
Six vintage Christie's Ceramic catalogues. (6)

3276.
Seven vintage Sotheby's English Ceramics catalogues. (7)

3277.
Nine various English Ceramics Circle copies of The Transactions. (9)

3278.
Seventeen various copies of The Northern Ceramic Circle journals and newsletters. (17)

Grantham Ceramics & Asian Art Sale

3279.
Ten copies of various reference works relating to Derby porcelain, including Pegg (William), *Fine China Painters and The Derby China Work*, catalogues of china by Haslem, *Old Crown Derby China Works and The King Street Factory 1849-1935*, The Anthony Hoyle catalogue, *The 1st Supplement To The Marks on Chelsea-Derby and three Derby Porcelain International Society Journals* nos. 1, 5 and 7. (10)

3280.
Three early 19thC Herculeanum coffee cans, two decorated in Imari colours and another with a gilt bond of foliage and flowers, c.1815. (3 pieces)

3281.
Four Worcester coffee cans, c.1800/1815, one BFB marked, decorated with printed flowers, another decorated with classical gilt bands on a salmon ground, marked BFB, another FBB marked, decorated with a band of red, puce, green and gold floral bands, the fourth marked incised 'B' and decorated with a orange ground and gilt strawberries. (4)

3282.
Two early 19thC Herculeanum tea cups and saucers, c.1815, one decorated in a green leaf and blue berry pattern, the other with blue and gilt spriggs, together with a Herculeanum coffee can decorated with a band of grapes and vine leaves. (5)

3283.
Five early 19thC Spode coffee cans, c.1810, one decorated with a border of Imari design, another decorated with a gilt oval, pattern no. 332 marked, the third decorated with a classical gilt border pattern, another with a orange ribbon pattern with a gilt foliage and border pattern of white flowers and gilt foliage on an orange ground. (5)

3284.
An early 19thC Coalport coffee can and saucer, c.1810, decorated in a rich gold and red floral C scroll pattern, together with another Coalport coffee can decorated with gilt oak leaves and swags with red bells. (3)

3285.
Four various early 19thC English porcelain coffee cans, c.1805 one New Hall pattern no. 623, decorated with a border pattern of white flowers on a blue ground, a Grainger's Worcester coffee can decorated with red flowers and gilt leaves, another coffee can with gilt, blue and red border pattern, and the fourth can decorated with palm leaves on a red seaweed ground. (4)

3286.
Indian School.
 A painted panel of various figures and horses, in a landscape, within a flower border, gouache, framed, 23cm x 30cm.

3287.
A pair of late 19thC Chinese silk embroidery panels, depicting flora and fauna in a diaper border, 23cm x 59cm.

3288.
An early 18thC English Delft blue and white plate, probably Lambeth, decorated with flowers, 20cm dia., and various shards of a 18thC famille rose bowl. (a quantity)

3289.
Various 18thC English and Dutch Delft tiles, to include polychrome examples, figure on horseback, scholars, 13cm x 13cm, etc. (a quantity)

3290.
A panel of various 18thC English and Dutch Delft tiles, to include powder examples, probably Lambeth or Vauxhall, oriental figure with blue floral spandrels, 13cm x 13cm, various others, etc, in a pine panel frame. (8 tiles)

3291.
A panel of fourteen English and Dutch Delft tiles, all early 18thC and later, to include purple and blue examples, 14.5cm x 13.5cm, etc., bird tile, figures playing, other Dutch tiles, etc. in a pine frame. (a quantity)

3292.
W Ritter (fl. 1896).
 Malay Fishmonger, gouache, signed and dated (96), 15cm x 10cm.

3293.
19thC School.
 The Beklee Gate of The Fort Agra, 10cm x 18cm, and another similar, coloured book plate prints. (2)

3294.
Two various Japanese kimonos, each 20thC in black and blue, sizes unknown, in a wicker style box.

3295.
Oriental School.
 Trees, and flowering plants, prints, 10cm x 23cm, etc.

3296.
Spare Lot.

3297.
19thC Middle Eastern School.
 Stork in a naturalistic setting, mixed media, signed, 18cm x 11cm, and another bird on branch, watercolour, signed and annotated. (2)

3298.
18thC Indian School.
 Gods in interior setting, material print, possibly silk, 30cm x 27cm, and two others similar. (3)

3299.
An early 20thC soapstone figure, of a goat aside two kids on naturalistic setting, 10cm H.

3300.
A 19thC oriental bowl, of flared outline, polychrome decorated with chicken in a naturalistic setting, predominately in orange, black and pink, with a part floral interior, 16cm W.

3301.
A 20thC bottle vase, with bulbous body and slender cylindrical stem, decorated with flowers on a green ground, on circular foot, six character Chinese mark beneath, 6cm H.



▲ **3302.**
A pair of late 19thC Royal Worcester vases, c.1899, each handpainted with roses, signed *R Austin*, with compressed trumpet stems, bulbous bodies and circular feet, green printed marks beneath, 19cm H. (2, AF)

3303.
An early 20thC Royal Worcester cabinet cup, c.1904, painted by William Ricketts, with autumnal fruits, pears, cherries and plums, pink printed marks beneath, 4cm H.

3304.
A patinated bronze bowl, possibly Japanese, with compressed circular neck, bellied body raised with flowers, on an inverted stem and platform base terminating in dragon's heads, unmarked, 24cm H.



▲ **3305.**
A mid 19thC Canton worked Chinese ivory tusk bridge scene, carved and set with many figures in boats at prayer, etc., in a naturalistic setting, on a fixed ebonised base, 11cm H.

3306.
A Georgian scrimshaw page turner, engraved with ship and Forget Me Not I Shall Return and Remember Me sailor's motto titles, 40cm W.

3307.
A late 19th/early 20thC bone Japanese tanto dagger with scabbard,
with plain blade heavily carved with figures, with compressed wooden mounts, 40cm W, and a part needle case with vacant Stanhope style top.

3308.
A late 19thC Japanese Imari vase,
with compressed stem and shouldered circular body, profusely decorated with scrolls broken by panels of exterior scenes, predominately in blue and orange, on a circular foot, unmarked, 33cm H.

3309.
A late 18thC style Dutch Delft cow creamer,
of typical form, polychrome decorated with flowers, on a shaped base, predominately in blue, brown and green, marks beneath, 16cm H. (no lid)

3310.
A large early 20thC Chinese cloisonné bowl,
of shouldered circular outline, decorated with insects and flowers on a blue ground, on circular foot, 19cm H.

3311.
A late 19thC oriental porcelain bowl,
polychrome decorated predominately in green, yellow and purple set with figures in a naturalistic setting, on circular foot, unmarked, 17cm dia, and a 19thC loving cup transfer printed with a polychrome decorated scene. (2, AF)

3312.
An early 18thC English Delft bowl,
decorated with flowers, with further decoration verso, probably Bristol or Liverpool, 22cm dia. (AF)

3313.
A 20thC Wye terracotta pottery plaque,
raised with a classical figures flanked by stylised columns, marks verso, 20cm x 19cm.

3314.
Two medieval style pottery floor tiles,
of square outline, the first set with coat of arms predominately in blue, yellow and pink, the second similarly decorated with stylised animals, 18cm x 17cm. (2, AF)

3315.
A large 18thC Delft tile,
of square outline centred by a butterfly, polychrome decorated predominately in blue, yellow and orange, 20cm x 20cm. (AF)

3316.
An 18thC blue and white English Delft dish,
of circular outline decorated with bird in a naturalistic setting, the border set with flowers broken by a lattice work, 34cm dia. (AF)

3317.
A 19thC Imari dish,
of octagonal outline, decorated and centred with a vase of flowers with an outer floral decoration predominately in blue and orange with gilt highlights, 33cm W.

3318.
A late 19thC Cantonese jar and cover,
of shaped circular outline decorated with panels of figures in interior settings broken by further panels of birds in famille rose colours, predominately in pink, green and blue, 10cm H.



▲ **3319.**
A late 18thC tin glazed earthenware blue and white saucer,
centred with a vase of flowers with an outer floral border, 14cm dia.

3320.
A blue and white tin glazed charger,
of circular outline decorated with oriental figures in an interior setting, with an outer lattice border broken by a stylised swirl decoration, 35cm dia. (AF)

3321.
An early 18thC English Delft polychrome decorated plate,
centred with flowers predominately in green, blue and yellow, with an outer lattice work border broken by further flowerheads and foliage, partial collector's label verso, 31cm dia. (AF), together with a Chinese blue and white plate. (2)

3322.
An mid 18thC English Delft charger,
probably Lambeth, polychrome decorated with a floral scene and outer flowerhead border with a fixed line banding predominately in blue, green and brown, 30cm dia. (AF)

3323.
A 20thC slipware Piscean dish,
of oval outline decorated with two fishes, unmarked, 26cm W.

3324.
Various oriental and other wares,
a late 19thC Cantonese plate polychrome decorated in famille rose colours predominately in pink and green, set with butterflies and summer flowers, 24cm dia, and three various tea bowls. (a quantity)

3325.
An 18thC Delft pottery tile,
in purple decorated with flowers and another 18thC blue and white tile decorated with a figure holding a pail, probably Dutch, 13cm x 13cm. (2, AF)

3326.
An 18thC English Delft blue and white plate,
decorated with flowers with an outer floral border and yellow lined banding, unmarked, 27cm dia., and a further Delft dish decorated with flowers and a polychrome decorated heavily potted mug, unmarked. (3)

3327.
A late 19thC Chinese porcelain vase,
with compressed circular stem and shouldered circular body, decorated with panels of birds in famille rose colours predominately in pink and green, on a blue ground, on circular foot, unmarked, 25cm H.

3328.
An early 20thC Chinese porcelain dish,
of shaped octagonal outline decorated with vase of flowers, a polychrome decorated bowl, tea bowl, shaped blue and white dish, a tin glazed earthenware vase, etc. (a quantity, all AF)

3329.
A 19thC Chinese famille rose vase,
with compressed trumpet stem, floral rim and shouldered body, with moulded dragons decorated with panels of figures broken by flowerheads predominately in pink and green, on a circular foot, partially converted to electricity, 38cm H. (AF)

3330.
Various tin glazed earthenware tiles,
to include one with a bird polychrome decorated in yellow, green and blue, 13cm x 13cm, etc. (3)

3331.
An 18thC tin glazed earthenware vase,
of shouldered outline on circular foot, profusely decorated with bird and flowers, 15cm H, and another similarly decorated, probably Dutch. (2, AF)

3332.
An 18thC Delft blue and white vase,
profusely decorated with flowers, on a circular foot, labelled beneath London Lambeth Wincanton or Bristol, 20cm H. (AF)

3333.
An 18thC English Delft bowl,
polychrome decorated with an oriental scene predominately in green, yellow, brown and blue, with an inner floral decoration, probably Bristol, and a Delft plate. (2, AF)

3334.
An 18thC English Delft plate,
polychrome decorated with flowers predominately in brown, yellow and blue, 23cm dia., and a blue and white Delft dish, probably Bristol, c.1760. (2, AF)



▲ **3335.**
An 18thC Pearlware pottery large blue and white jug,
printed with a Spode type Willow pattern design below a shell and diaper border, c.1790, 21cm H.

Grantham Ceramics & Asian Art Sale

3336.
Three early 19thC Derby red marked coffee cans,
c.1805/1810, a Derby coffee can moulded with flower sprays and picked out in gold in a salmon ground with a wishbone handle, another Derby coffee can decorated with a salmon ground band and gilt floral band, the third coffee can decorated with a green ground band and a gilt dart band and an inner gilt floral band. (3)

3337.
An 18thC Chelsea red anchor mark and period plate,
c.1765, with a crown rim, the decoration of well painted floral sprays, 24cm dia. and a Chelsea moulded red anchor period plate, c.1758/60 moulded with floral sprays with a inner moulded band of flowers, the decoration of scattered flower sprays and insects, 24cm dia. (2 pieces)

3338.
An 18thC Derby blue marked plate,
c.1770, decorated with gilt swags, cartwheels, and a starburst to the centre, blue crown over D mark, 23cm dia.

3339.
Four early 19thC Derby coffee cans,
c.1805-1810, red Derby marked, one Derby can with a wishbone handle decorated with a blue, gilt and white border pattern, another again with a wishbone handle and painted with small polychrome flower sprays, another with a square handle and a red gilt border, the fourth with a ring handle with thumb rest and decorated with a gilt floral border. (4 pieces)

3340.
An 18thC Chelsea Derby cup and saucer,
of large proportion, with cross over Meissen type handle, decorated with green floral sprays with a gilt centre and gilt dentil border, gold anchor and D marked, c1768, cup 7cm H.

3341.
An 18thC Bow porcelain figure of Winter,
c.1758, 12cm H.

3342.
An 18thC Derby blue and white sauce boat,
c.1770, decorated with a landscape to the bottom of the sauce boat below a C scroll inner border, the outer border printed with insects and C scrolls, incised size 6, 14cm W and a Derby moulded sauce boat, c.1770 the moulding picked out in blue below a rope twist border, patch marked, 17cm W. (2 pieces)



3343.
An 18thC Worcester porcelain blue and white moulded sauce boat,
c.1770, decorated with two panelled landscape within a moulded cartouche, crescent marked, 14cm W.

3344.
A pair of 18thC Derby small petal moulded side plates,
c.1775, decorated with green floral sprays and gilt centres, crown over D mark, 17cm dia. (2)

3345.
An 18thC blue marked Derby bowl,
c.1775, decorated with a band of Smith blue and white flowerheads, with red and yellow ribbons below a dentil gilt rim with painted floral sprays below, marked blue crown over D mark, 15cm dia.

3346.
Various early 19thC porcelain,
to include a factory Z coffee cup painted in the hollow rock pattern and a Keeling coffee cup, c.1800, with pixie ear handle decorated in gilt and white dentil rim and wavy line and dots, etc. (4 pieces)

3347.
An early 19thC Thomas Wolfe factory Z creamer,
c.1805, decorated with sepia prints of grapes, vine leaves and peaches below gilt lines, 13cm W.

3348.
A late 18thC Thomas Wolfe factory Z trio,
c.1795, consisting of a tea bowl, saucer and coffee can, decorated in gilt and sepia with a band of feathers and tracery, pattern no. 38, unmarked. (3 pieces)

3349.
A late 18thC Thomas Wolfe factory Z trio,
c.1795, comprising of a tea bowl, saucer and coffee can, decorated with a band of sepia feathers and gilt tracery, pattern no. 38, unmarked. (3 pieces)

3350.
A late 18thC Keeling spiral fluted trio,
c.1795, comprising of a tea bowl and saucer and a coffee cup, the coffee cup with pixie ear handle decorated with a single gilt line and undulating floral band, pattern no. 154, marked 154 in red. (3 pieces)

3351.
A mid 19thC English porcelain armorial dinner service,
c.1840, probably Coalport, many pieces marked *A.B Daniell London*, with Vicimus Wolf crest, comprising of a large serving platter 55cm W, another smaller, a lidded muffin dish, open dish, tureen and lid, six soup bowls and eighteen two sized dinner plates, each with Royal blue and gilt highlighted scroll decoration on a white ground. (a quantity)

3352.
A polished jade coloured stone vase,
of shaped outline with ring handles on an oval foot, 20cm H.

3353.
A 19thC Copeland china porcelain dessert service,
set with armorial crest *Honesty Is The Best Policy*, with a Royal blue ground with gilt highlights and painted dot border, 23cm W, and a quantity of similar shell shaped dishes. (a quantity)

3354.
A pair of Chinese sugar bows,
bamboo style, white metal marked, 13cm W, and a dish with similar markings. (2)

3355.
A Japanese Meiji period Satsuma vase,
of octagonal outline with an inverted cylindrical stem, profusely decorated with figures, with gilt highlights, on a circular foot, marked beneath, 17cm H, and a similar two handled koro. (2)

3356.
An early 20thC Royal Dux vase,
of oblong outline, set with a child clown, predominately in green and cream with a gilt highlights, raised triangle mark beneath, 18cm W.

3357.
Various African hardwood tribal items,
to include figures, of shaped outline, 25cm H, a figure with vase to his head, beadwork, etc. (a quantity)

3358.
A Dutch tin glazed earthenware equestrian figure,
polychrome decorated, marked, *Roos*, 27cm H.

3359.
A pair of Chinese blanc de chine figures of Guanyin,
each in flowing robes on a naturalistic floral base, 42cm H. (2)

3360.
A Japanese card case,
inlaid with houses before Mount Fuji on a black ground, signed, with thumb mould spring loaded opening, with a plain interior, 9cm W.

3361.
A pair of Chinese bronze vases,
of bulbous outline, repousse decorated with dragons, on circular feet, 25cm H.

3362.
Three various Chinese gilt bronze figures,
of Sages, each in flowing robes on naturalistic bases, one holding an orb and a staff, various designs, 19cm H. (3)

3363.
A patinated bronze figure,
of a seated god, with legs crossed, early Qing period, 16cm H.

3364.
Various oriental items,
Chinese, etc., early 19thC Imari
style plate with gilt highlights,
19cm dia., various tea bowls, blue
and white crackle vase, blue and
white saucer, small dish with
raised turtle, etc. (a quantity)

3365.
**A Chinese blue and white
porcelain bowl,**
probably Ming period, of circular
outline, decorated with a repeat
geometric pattern, on a plain
circular foot, 10cm dia., and
another in celadon glaze,
probably of similar date. (2, AF)

3366.
**A Chinese carved stone
monkey,**
holding urn, heavily polished in
green glazes, unmarked, 20cm H,
possibly early 19thC.

3367.
**Three blue and white
porcelain bowls,**
each of circular outline, one with
an inner geometric pattern
decorated with external flowers,
on a circular foot, 22cm dia., and
two other blue and white bowls,
smaller, one set with fish, possibly
Ming period. (3, AF)

3368.
**An early 20thC Indian brass
figure group,**
of an oxen pulled cart, with figure
to the back, 6cm H, and three
other various brass animal
figures, all probably Indian. (4)

3369.
**A pair of Chinese gilt bronze
cats,**
each in standing poses on
rectangular plinth bases, 17cm H.
(2)

3370.
**Various soapstone
ornaments,**
to include an early 20thC heavily
carved vase with central bowl
surrounded by animals, in black
and cream, 20cm H, a floral
soapstone figure, standing sage,
another in jade colours, polished
elephant soapstone, circular lid,
etc. (a quantity)

3371.
Six various opium weights,
probably Indian, to include
animal figure, 7cm H, etc., brass
figure of a god, etc. (6)

3372.
**A ceremonial shaped wooden
shield,**
possibly Maori or South Sea, of
oval outline, heavily carved with
raised lower section,
45cm H, 18cm W, 4cm D.

3373.
20thC Japanese School.
Mountain scene, mixed media,
printed signature, 44cm x 64cm.



▲ **3374.**
**A 19thC Chinese famille
rose bowl,**
of circular outline profusely
decorated with panels of
figures on horseback, in a
naturalistic setting
predominately in pink, green,
blue, turquoise and purple,
with further hunting scenes
broken by gilt highlighted
sections, on a circular foot,
with an inner decoration,
26cm dia. (AF)
See Andrew Smith sale lot 469,
25th January 2011.



3375.
**An 18thC Chinese export
armorial tea bowl and saucer,**
of small proportion, polychrome
decorated with outer swags
predominately in green and pink,
the saucer with an oval initialled
crest set with ribbons, with
similar decoration to the bowl,
4cm H. (2)

3376.
Various hand fans,
to include an enlarged Japanese
lacquered example with paper
centre, 67cm W, a silk fan, various
others, ivory finish early 20thC
and later. (a quantity)



▲ **3377.**
**An early 19thC Obadiah
Sherratt pottery bust of
John Wesley,**
on an inverted mottled stem
and square foot, with front
title, polychrome decorated,
32cm high. (AF)



▲ **3378.**
**A Russian Gardner
porcelain figure,**
of a lady wearing a turquoise
head scarf and purple dress
with cream and red pinafore,
on a square base, printed mark
in red to underside, 20cm H.

3379.
**An 18thC First period
Worcester porcelain blue and
white tea bowl and saucer,**
c. 1775, cannon ball pattern, with
a blue open crescent mark,
7cm dia. (2)

3380.
**An 18thC Worcester
porcelain teacup and saucer,**
c. 1800, of leaf shape, with
powder blue and gilt highlighted
rim, decorated with flowers, the
cup having incised B, 5cm W,
crossed mark to saucer. (2)

3381.
**An 18thC Worcester
porcelain blue and white
pickle dish,**
c. 1775, of flower head outline,
decorated with flowers, open
crescent mark beneath, 5.5cm W.

3382.
**A 19thC Chinese bone model
of a pagoda,**
in six sections, elegantly carved
with a repeat design, 75cm high.

3383.
**A 19thC Japanese Kutani
pottery charger,**
of circular outline, gilt highlighted
and decorated with panels of
birds, figures and buildings,
predominately in orange, six
character mark beneath, 40cm dia.
(AF)

3384.
**A Chinese porcelain blue and
white bowl,**
four character stylised Kangxi
mark beneath, of shaped circular
outline, profusely decorated with
flowers, double line four character
mark beneath, 18cm W.

3385.
**A 19thC Ridgeway pottery
soup tureen,**
with cover, ladles and stand,
transfer printed with flowers,
printed marks beneath, 13cm H.



▲ **3386.**
**A Chinese porcelain erotic
figure group,**
formed as nude lady and
gentleman cavorting on a
mattress, predominately in
blue, on a unglazed biscuit
base, unmarked, 16cm W.

Grantham Ceramics & Asian Art Sale

3387.
A Chinese porcelain erotic figure group,
 formed as a fornicating couple, in recumbent pose, partially decorated in green, unmarked, 10cm W.

3388.
A Chinese porcelain erotic figure group,
 formed as fornicating couple in a naturalistic setting, sparsely decorated in blue and red, unmarked, 11cm H.

3389.
A Chinese porcelain erotic figure group,
 formed as two gentlemen cavorting with a lady, sparsely decorated in green, blue, red and black, on an unglazed base, unmarked, 9.5cm H.

3390.
Curtis (Annette).
 Erotic Antiques, Lyle Publications, 160pp, hardback with dust jacket.



▲ **3391.**
A mid 19thC Anglo-Indian Tree Of Life style chair,
 probably Bombay, profusely carved with a heavily pierced oval back, with drop in seat overtufted in early floral material on shaped front supports, with lion's mask patera and stylised hoof feet, 103cm high.

Further lots are included in this sale.
 Please refer to online catalogue for details.



Bid Here Without Being Here

Buying at auction has never been so easy

the-saleroom.com
 live auctions

For more information about Live Auctions please go to www.the-saleroom.com

GOLDING YOUNG 1864
 CHARTERED AUCTIONEERS & VALUERS • ARTS & ANTIQUES SURVEYORS

INFORMATION FOR BUYERS

1. **Introduction:** The following informative notes are intended to assist Buyers, particularly those inexperienced or new to our salerooms. All sales are conducted on our printed 'Conditions of sale' which are readily available for inspection and normally accompany catalogues. Our staff will be happy to help you if there is anything you do not fully understand.
2. **Agency:** As auctioneers we usually contract as agents for the seller whose identity, for reasons of confidentiality, is not normally disclosed. Accordingly, if you buy your primary contract is with the seller.
3. **Estimates:** Estimates are designed to help buyers gauge what sort of sum might be involved for the purchase of a particular lot. The lower estimate may represent the reserve price and certainly will not be below it. Estimates do not include the buyer's premium or VAT (where chargeable). Estimates are prepared some time before the sale and may be altered by announcement before the sale. They are in no sense definitive and are subject to constant revision.
4. **Buyers premium:** The 'Conditions of sale' oblige buyers to pay a buyer's premium at 20% on the hammer price of each lot purchased with a minimum of £2 per lot. In the case of lots purchased 'Live On-line' or via www.the-saleroom.com or www.i-bidder.com please see bidding platform for buyers premiums.
5. **VAT:** An asterisk (*) indicates that VAT is payable by the purchaser at the standard rate imposed by current UK law on the hammer price as well as being an element in the buyer's premium, lots are noted in the saleroom by a red dot on the lot number. This imposition of VAT is likely to be because the seller is registered for VAT within the European Union and is not operating the Dealers Margin Scheme or because VAT is due on importation into the UK. The double symbol (**) indicates that the lot has been imported from outside the European Union and the present position is that these lots are liable to a reduced rate of VAT on the gross lot price (i.e. both the hammer price and the buyer's premium). Lots which appear without either of the above symbols indicate that no VAT is payable on the hammer price. This is because such lots are sold using the Auctioneers' Margin Scheme and it should be noted that the VAT included within the premium is not recoverable as input tax. (VAT rates are changing with frequency, please check with HMRC. VAT will be charged as set by Government at the time of sale.)
6. **Condition and description of lots.** We are primarily, agents for the seller. We are dependent on information provided by the seller and whilst we may inspect lots and act reasonably in taking a general view about them we are normally unable to carry out a detailed or any examination of lots in order to ascertain their condition in the way in which it would be wise for a buyer to do. Intending buyers have ample opportunity for inspection of goods and, therefore, accept responsibility for inspecting and investigating lots in which they may be interested. Please note carefully the exclusion of liability for the condition of lots contained in the 'Conditions of sale'. Neither the seller nor we, as the auctioneers, accept any responsibility for their condition. In particular, mechanical objects of any age are not guaranteed to be in working order. However, in so far as we have examined the goods and make a representation about their condition, we shall be liable for any defect which that examination ought to have revealed to the auctioneer but which would not have been revealed to the buyer had the buyer examined the goods. Additionally, in specified circumstances lots misdescribed because they are 'deliberate forgeries' may be returned and repayment made. There is a 21 day time limit from the date of sale, not date of collection or receipt. (The expression 'deliberate forgery' is defined in our 'Conditions of sale').
7. **Electrical goods:** Items are tested by a qualified electrician for SAFETY ONLY. An item that passes the PAT safety test may not work. Conversely, an item that fails the test may work with just minor repair. 'Working Order' and 'Safe' are two completely different concepts. The only thing you may take for granted is that the item will be safe at the point of sale. Items that have failed will have their cabling cut to source, labelled and sold 'For Trade Only'. To use the object you will have to change it radically from what was sold to you. Therefore, the Auctioneers cannot be held responsible after the point of sale. Those items sold genuinely as 'antiques or collectables' will not have been tested and if bought for use must be checked over for compliance with safety regulations by a qualified electrician before use. This is an express condition.
8. **Export of goods:** Buyers intending to export goods should ascertain (a) whether an export licence is required and (b) whether there is any specific prohibition on importing goods of that character

because, e.g. they may contain prohibited materials such as ivory. Ask us if you need help

9. **Bidding in person:** Some form of identification with proof of address will be required if you are unknown to us. Bidders may be required to register before the sale commences and lots will be invoiced to the name and address on the registration form. Account transfers will not be recognised or facilitated under any circumstances.
10. **Absentee bidding:** Commission bids may be left with the auctioneers indicating the maximum amount to be bid excluding buyers' premium. They will be executed as cheaply as possible having regard to the reserve (if any) and competing bids. If two buyers submit identical commission bids, the auctioneers may prefer the first bid received. If there are genuine reasons why you are unable to leave a Commission Bid and you wish to bid by telephone we may accommodate on lots where your opening bid will be £500 or above. There are inherent dangers with this practice; therefore all arrangements shall be entirely at the bidder's risk. Absentee bid instructions must be received by telephone, fax or email 12 hours prior to the sale.
11. **Live Internet Banking:** In completing the bidder registration on www.the-saleroom.com and providing your credit card details and unless alternative arrangements are agreed with Golding Young Limited, you
 - (i) authorise Golding Young Limited, if they so wish, to charge the credit card given in part or full payment, including all fees, for items successfully purchased in the sale via www.the-saleroom.com or www.i-bidder.com, and
 - (ii) confirm that you are authorised to provide these credit card details to Golding Young Limited through www.the-saleroom.com or www.i-bidder.com.
12. **Methods of payment:** Accounts are due for settlement SALEDAY. The following methods of payment are acceptable. There will be NO EXCEPTIONS to this policy. To avoid undue embarrassment for yourself or our staff, please do not ask for preferential treatment.
 - i. **Cash.** Single payments up to £7,000 only.
 - ii. **Debit Card.** No limit with chip & pin. (CNP limit £500).
 - iii. **Credit Card.** No limit with chip & pin. (CNP limit £500).
 - iv. **Bank Drafts & Building Society Cheques.** No limit. Due to forgeries, we will retain the goods for 3 working days to establish clearance of funds.
 - v. **Cheques.** Accepted up to the limit of the guarantee card for immediate clearance. For sums exceeding this, and you are not known to the auctioneers, we will retain the goods for 7 working days to establish clearance of funds.
 - vi. **Bank Transfer.** Please see details on our website.
13. **Collection and storage:** Goods can be collected as soon as they are paid for and within two working days following the sale. If goods remain with us and we have no contrary written advice of your intentions the items will be moved to storage and reasonable labour charges levied and storage at the rate of £2+vat per lot per day thereafter for small items and £10+vat per lot per day for furniture and large items.
14. **Postage and packing:** Options for buyers are available at www.goldingyoung.com/buying-shipping or ask a member of staff.

Lots subject to normal VAT rules are marked in the text-only catalogue with a single asterisk character (*) or a single dagger symbol (†) to indicate a VAT added rate of 20%.

Lots subject to normal VAT rules are marked in the text-only catalogue with a single 'at' character (@) to indicate a VAT inclusive rate of 20%.

Lots subject to normal VAT rules are marked in the text-only catalogue with double asterisk characters (**) or a double dagger symbol (§) to indicate a VAT added rate of 5%.

Lots subject to normal VAT rules are marked in the text-only catalogue with double 'at' characters (@@) to indicate a VAT inclusive rate of 5%.

Lots marked in the text-only catalogue with a bullet character (•) are subject to the Artist's Resale Right Scheme.



The wrong time to find out
what it was worth...



Over 40 million pounds of antiques & fine art valuation
in UK, Europe, Asia, Africa & The Americas since January 2014.

ESTD
1864
GOLDING YOUNG



William Gregory MRICS and Colin Young MRICS
are RICS Registered Valuers and
offer free advice for Insurance, Tax Planning and Probate reporting
and of course the sale of single items and collections.

The Bourne Auction Rooms
+44 (0) 1778 422686

The Grantham Auction Rooms
+44 (0) 1476 565118

The Lincoln Auction Rooms
+44 (0) 1522 524984

CHARTERED AUCTIONEERS & VALUERS ♦ ARTS & ANTIQUES SURVEYORS



goldingyoung.com

EST
1864
GOLDING YOUNG



Thinking of selling?

Executors, solicitors, accountants, insurers, corporations and government departments, have to exhibit due diligence when instructing. Use this checklist to do the same, with a few reasons why you may wish to choose us.

We are regulated by RICS

Better Regulation for Us.
Better Protection for You.
Accept Nothing Less.

Our online catalogues

For over 20 years our catalogues have been online and our experience ensures they are placed in front of the right buyers in the global market.

Our sales results

December 2018 saw our 122nd consecutive month with a sale at either Bourne, Grantham or Lincoln producing a sold rate of over 90%. Good advice, great results for hundreds of vendors every month.

Join their success with an entry in our next sale!

goldingyoung.com

HOUSE CLEARANCE

If there is that hidden 'find', it will be to your direct benefit.

Every week we take instructions for House Clearance for all of the prominent firms of Solicitors in the area, as well as from Private Individuals, Trustees and Executors.

If you are dealing with the content of a property, please contact us at the earliest point.

A visit to the premises by one of our qualified and experienced appraisal staff will offer the best advice for Security, Valuation and Sale.

DISPOSE OF NOTHING

Often things thought to be rubbish are saleable.

IMMEDIATE ACTION IS REQUIRED

Once a property is uninhabited it is a target for burglars and your insurance may be invalid.

Items removed from premises are listed and handled by our professional carriers. Goods are then allocated to the next appropriate sale to ensure the highest sale return.

We also deal with the unsaleable residue, disposed of in the most cost-effective and environmentally friendly way, giving a total service.



**PROPERTIES CLEARED,
PROMPTLY AND EFFICIENTLY**

Call: John Ireland MA MRICS - **01778 422686**

For Bourne, Stamford, Peterborough Region and Southern Counties

Call: Craig Bewick BA (Hons) MRICS FNAVA - **01476 565118**

For Grantham Region and The Midlands

Call: John Leatt ASFAV - **01522 524984**

For Lincoln Region and Northern Counties

The Bourne Auction Rooms

Spalding Road, Bourne,
Lincolnshire PE10 9LE

E: bourne@goldingyoung.com

T: +44 (0) 1778 422686

F: +44 (0) 1778 425726

London & South Valuations

E: london@goldingyoung.com

T: +44 (0) 2033 011007

The Grantham Auction Rooms

Old Wharf Road, Grantham,
Lincolnshire NG31 7AA

E: grantham@goldingyoung.com

T: +44 (0) 1476 565118

F: +44 (0) 1476 561475

The Louth & Wolds Office

5 Mercer Row, Louth
Lincolnshire LN11 9JG

E: louth@goldingyoung.com

T: +44 (0) 1507 661864

The Lincoln Auction Rooms

Thos Mawer House, Station Road
North Hykeham, Lincoln LN6 3QY

E: lincoln@goldingyoung.com

T: +44 (0) 1522 524984

F: +44 (0) 1522 681804

The Stamford & Rutland Office

1, The George Mews
Station Road, Stamford
Lincolnshire PE9 2LB

E: stamford@goldingyoung.com

T: +44 (0) 1780 751666