



EST
1864

GOLDING YOUNG

Fine Ceramics & Asian Art Sale

Wednesday 5th September 2018



CHARTERED AUCTIONEERS & VALUERS • ARTS & ANTIQUES SURVEYORS

PROBATE – INHERITANCE TAX ASSESSMENT

For many Executors and Trustees the responsibility of dealing with a deceased's Estate is a once-in-a-lifetime experience. You have to make a number of important decisions in a very short space of time and all when the loss is most difficult to come to terms with.

The position of Executor is an important one in law and has defined personal liability and responsibility. To exhibit due diligence to beneficiaries and more importantly HM Revenue & Customs, an Executor or advisor will instruct a firm Regulated by RICS.

Even if the estate will be taxed at 0%, a valuation remains an essential tool for an Executor. The inventory will still be used for identification of bequests, trust items, family division and proof of value.

Our valuations are prepared to the International Valuation Standards requirement of the 'Red Book'.

The report will cover sections of:

- Jewellery
- Vehicles
- Antiques, Fine Art & Collections
- General Furniture & Effects



For initial advice contact the following Chartered Auctioneers & Valuers:

Bourne, Stamford & South
Colin Young MRICS
01778 422686

Grantham, Lincoln & North
William Gregory MRICS
01522 524984



Removals – Household & Commercial

- Free Quotations
- Full Packing Service
- Suppliers of Packing Materials
- Shipping & Storage Arranged
- Antiques & Fine Art Specialists
- Specialist Piano Movers
- Office Movers

**Contact Andrew Lowes on 07970 742577 for a quote
or email lowes@goldingyoung.com**

goldingyoung.com

PRIVATE CLIENT & PROFESSIONAL SERVICE DEPARTMENT

We value personal property for private and corporate clients. Our team have valued family heirlooms, art collections and museum holdings for a variety of purposes.

We are the only auction house in the region to have a bespoke Private Client Department with:

- Four Chartered Arts & Antiques Surveyors
- Two RICS/ Antiques Trade Gazette professional assessment award-winning valuers
- Two In-house qualified jewellery valuers
- Experience in abundance and diversity since 1864
- Ten professional staff with RICS, NAVA or SoFAA qualifications.



The Grantham Ceramics & Asian Art Sale

Wednesday 5th September 2018

At The Grantham Auction Rooms

Sale commences at 10am

Viewing: Tuesday 4th 10am-4pm
& Saleday 8.30am-10am

Bid online or simply watch the sale live at



All enquiries to 01476 565118

Ceramics - Craig Bewick MRICS FNAVA

Asian Art – Colin Young MRICS FNAVA ASFAV

Front cover images:

Lot 1. A fine Chinese carved jade vase and cover,
with stylised dragon mask ring handles, 19.5cm x 15.5cm.

Lot 181. A Davenport fruit dish or comport from the 1831 William IV Coronation Banquet service,
the centre painted with a patriotic spray of roses, thistles, leek and shamrock tied with a Union ribbon, the
interior rim with floral reserves on a green ground hatched in gilt, printed factory mark, 33cm across.

Grantham Ceramics & Asian Art Sale



- ▲ 1. A fine Chinese carved jade vase and cover, with stylised dragon mask ring handles, 19.5cm x 15.5cm. (AF)



- ▲ 2. A Derby cornucopia wall pocket, of rococo shape, decorated with exotic birds, c.1765 (patch mark) 25cm x 14cm. (AF)
NB. For a similar pair see G Bradley, Derbyshire Ceramics In The Derby Museum.



- ▲ 3. A Rockingham tureen cover and stand, c.1828, moulded with oak leaves and acorns. 23cm x 17cm. (AF)



- ▲ 4. A Rockingham teapot cover and stand, pattern no. 1475 c.1835, decorated with panels of English flowers, 16cm high.

5. A Derby porcelain figure, of Dr Syntax writing, with pair of ducks at his feet, c.1900, 14cm x 10cm. (AF)

6. A Chinese European style small bowl, 12cm, (restored)

7. A 19thC oriental pottery Libation cup, moulded with a parrot on leafage, 9cm. (AF)

8. A Continental figure, of a Mansion House dwarf, c.1900, 17cm high.

9. A Samson figure, of a Mansion House dwarf, c.1900, playing a mandolin, 19cm high.

10. A Derby figure, of a Mansion House dwarf, c.1835, patch marks and incised no. 44, 220cm high. (AF)



- ▲ 11. A pair of Derby figures, of Mansion House dwarfs, c.1835, incised marks, no. 18 and no. 47.

12. A Derby white glazed figure, of a Mansion House dwarf, c.1900, 19cm high.

13. An English pearlware figure, of a Mansion House dwarf, c.1830, 18cm high.

14. An English pearlware figure, of a Mansion House dwarf, c.1830, 18cm high.

15. An English pearlware figure, of a Mansion House dwarf, c.1830, 18cm high.

16. An English pearlware figure, of a Mansion House dwarf, c.1830, 15cm high.



- ▲ 17. An extensive early 19thC Spode dessert service, including a pair of footed cream tureens, covers and stands, footed comport, a pair of large handled baskets, a pair of middle sized handled baskets, a set of four small handled baskets, 17 dessert 220 0 plates, each decorated with English flowers in reserves on a green ground, c.1825, marked Spode 2705. (32)



- ▲ 18. A Royal Worcester two handled vase by James Stinton, painted with a cock pheasant, signed left hand side JAS Stinton, puce mark for 1917, 16cm high.



- ▲ 19. A Royal Worcester two handled vase by James Stinton, painted with a cock pheasant, signed to the left hand side JAS Stinton, shape code G995, black mark your 1906, 15cm high.



- ▶ 20. A Royal Worcester large tulip vase by James Stinton, painted with a cock pheasant, signed JAS Stinton, shape G1047, green mark for 1899, 22cm high.



- ▲ 21. A Royal Worcester bottle vase by Harry Stinton, painted with Highland cattle by a mill, signed H S Stinton, shape code G702, green mark for 1918, 14cm high.



- ▲ 22. A Royal Worcester James Stinton two handled vase, painted with cock pheasant, signed J A Stinton, puce marked, shape 2021, 13cm high.

- ▼ 27. An early Royal Copenhagen part dinner service, decorated with marrow, fruit, grapes, etc. in grey sepia. (12 pieces)



23. A Royal Worcester James Stinton puce marked box and cover, painted with Highland cattle, signed James Stinton, puce mark for 1929, 6.5cm high.



- ▲ 24. A Royal Worcester Stinton squat vase, painted with Highland cattle, signed Stinton, shape code H158, purple mark for 1939, 8cm high.

25. A Royal Worcester trumpet vase by James Stinton, painted with cock pheasant, signed JAS Stinton, shape G923, purple mark for 1938, 11.5cm high.

26. A Royal Worcester two handled baluster vase by James Stinton, painted with a cock pheasant, signed by JAS Stinton, shape 1034, puce mark for 1909, 9cm high.



- ▲ 28. A pair of Chinese vases, globular form, decorated with oriental pheasant within prunus and hollow rock, 18 character mark in blue, 25cm tall.



- ▲ 29. A Chinese reticulated double walled vase, pierced with oriental pearl in famille vert colours, impressed 6 character mark, 23cm tall.



- ▲ 30. A Royal Worcester loving cup by James Stinton, decorated with a cartouche, with pheasant in landscape, signed JAS Stinton, on a royal blue ground, puce mark for 1919, 16cm high.



- ▲ 31. A Continental figure, of a Mansion House dwarf, c.1890, 21cm high.



- ▲ 32. A pair of Rockingham red Griffin ewers, marked factory mark and E72 in red, c.1828, overall 20.5cm high, (AF), decorated with white applied flowers and central polychrome flower groups.



- ▲ 33. A Derby figure, of a musician playing a pipe and drum on a rococo base, c.1835, incised mark no.311, 21cm high overall.

Grantham Ceramics & Asian Art Sale



- ▲ 34. **A Derby patch marked candlestick figure**, of a shepherdess with lamb at her feet, set of a rococo base, c.1775, (sconce missing), 20cm high.



- ▲ 35. **A Derby patch marked candlestick figure**, of a Gallant, c.1785, 26cm high.

36. **A Derby blue and white butter boat**, moulded as a vine leaf with stalk handle on three lotus feet, c.1775, cell border and oriental landscape to the inside, 7cm overall.

37. **A rare Derby Blue and white wine taster**, c.1768, of circular form with leaf handle, cell border and hand painted with a peony to the inside.

38. **An unusual Liverpool (probably Christians) shell dish**, mounted on three feet, c.1768, 10cm dia. and a Derby blue and white shell dish, painted with flower ground within a cell tape border, 10cm overall, c.1770, incised '3', another Derby blue and white shell dish en-suite, incised '1', c.1770, 9cm dia. (3, all AF)

39. **A Derby blue and white pickle leaf dish**, c.1775, of leaf form with twig handle, printed to the centre with flower group, 9.5cm overall.



- ▲ 40. **A Worcester work man's marked punch bowl**, c.1756-58, painted with the Precipice pattern, workman's mark to foot rim, 22cm dia.

41. **A Pennington Liverpool large punch bowl**, printed with flower groups to the exterior and cell border and classical romantic landscape to the inside, c.1785, 24.5cm dia.

42. **A Booths pottery plate**, superbly decorated with exotic birds in landscape and flower groups, after Giles, with gilt cartouche on a blue scale ground, c.1900, 23cm dia., another plate after Chelsea, with blue ground and swags with exotic birds, c.1865, 22cm dia. (2)



- ▲ 43. **A Chelsea outside decorated plate**, c.1775, decorated with cut fruit group, with unusual crimson border, unmarked, 23cm dia.

44. **Mason's patent Ironstone china**, impressed and printed marks, c.1813-25, decorated with oriental landscape within a moulded and flower border, 24cm dia., another ornate china plate marked J.W.R (probably for Rathbone c.1818-1823), decorated with birds in landscape with rose border, 'C' scroll moulded with blue ground and gilding, 25cm dia. (2)

45. **A Rockingham puce Griffin period trio**, pattern no. 1475 marked, c.1835, single spur handles. (3)

46. **A puce Griffin marked cup and saucer**, pattern no. 1438, of single spur shape, c.1835, decorated in blue and gilt, a puce Griffin marked three spur handled Rockingham cup and saucer, pattern no. 1321, decorated with landscapes on a grey ground, c.1835. (4)



- ▲ 47. **A rare Rockingham Red Griffin marked Trifler or cup plate**, c.1826, decorated with fine flower groups within 'C' scroll gilt borders, pattern no. 597, marked in gold overall, 10cm dia.

48. **A Rockingham puce Griffin marked potpourri basket and cover**, c.1830, the basket moulded with flowers and heavy loop handle (restored), 12cm dia. (2)

49. **A Rockingham red Griffin marked plate**, c.1828, pattern no.575, marked in red, the plate moulded with shark tooth and gilding, with handpainted flower groups, overall 24cm dia.

50. **A Brameld teapot stand**, decorated with printed flowers groups, c.1825, 18cm dia., A Rockingham cake plate puce Griffin period (unmarked), decorated with pink cottage roses on grey and gold leaves, overall 27cm long. (2) Part of a single owned private collection from London.



- ▲ 51. **A rare Meissen blue and white saucer**, c.1730, decorated with chinoiserie style landscape, crossed swords mark in underglaze blue, 12cm dia.



- ▲ 52. **An early Meissen saucer**, gilder no. 92, superbly painted with chinoiserie scene of figure over a fire elaborate gilt decoration, bottle lustre with iron red and brown scrolling, 12.5cm dia.



- ▲ 53. **A Sevres plate**, c.1759, date letter 'F', the plate moulded feuille de choux border with flowers and central polychrome landscape depicting a hunting scene, unidentified painted mark (a caduceus in blue, see figure 91 in French Porcelain, A Catalogue of The British Museum Collection (1994) Aileen Dawson).

54.
A Chelsea Derby dessert dish, of circular and fluted form, Anchor and D gilt mark, 1775-77, central polychrome flower spray with three scattered flower groups, blue outer border decorated with grapes and vine leaves in gilt, 21cm dia., and a plate en suite (unmarked), 23cm dia. (2)

55.
A Derby puce marked circular fluted dessert dish, cross batons mark in puce, blue 5 and puce 2 in foot rim, floating pattern no. 18-N, plate pattern 18 with monogrammed DS to the centre.
Provenance: Kedleston Hall sale 13th March 2002 lot 189.

56.
A Derby plate, anchor and D mark in gilt, C.1775, Broad Smiths blue rim with tooled gilt swags and roundels, inner Smiths blue ring with tooled gilt swags, grey urn with pink flowers swags 3 grey trophy motifs, 23cm dia.

57.
A Chelsea Derby shallow bowl, anchor and D mark in gold, c.1775, Broad Smiths blue border with gilt palm leaves and pearls, centred shaped grey urn and swags of pink flowers, three polychrome flower sprays and small scattered sprigs gilt band to foot rim on green flower groups to the centre, 23cm dia.

58.
A Derby blue marked soup dish, c.1777-84, Neo Classical decoration, Smiths blue border with tooled gilt flower heads and swags above green husk swags, blue crown and D mark, central grey urn, gilt rim to foot rim, 23cm dia.

59.
A Chelsea Derby plate, gold anchor mark, 1775-1784, moulded mazarine blue border decorated with tooled gilt swags and vine leaves, central grey urn with polychrome flowers, and scattered flower sprays decorated in Duesburys decorating shop in Chelsea, 23cm dia.

60.
A rare Derby Duke of Northumberland Service octagonal dish, gold anchor, 1778/1779, decorated in Duesburys decorating shop in Chelsea probably by Edward Withers, the decoration of light blue ground with fine gilt surrounds tooled gilt and white pearls with flower sprays in tooled gilt panels, overall 23cm.

61.
A rare Derby anchor and D in gilt plate, of Egerton type pattern, c.1773-1777, the border of five Romanesque heads on a claret ground with gilt reserves, green husk swags shadowed in pink with central large bunch of grapes and scattered insects, gilt foot rim, (probably made for the Egerton family of Cheshire), overall 22cm dia.

62.
A Chelsea Derby moulded plate, anchor on D marked in gilt, 1773-1777, decorated with a turquoise border with tooled gilt flowerheads and swags above rose swags in pink and green with large central rose, gilt foot rim, 21.5cm dia.

63.
A Chelsea feather moulded plate, unmarked, 1760-70, decorated with romantic urban landscape in polychrome, probably by Boreman, typical Chelsea, scattered insects and flowers, the feather mould border picked out in puce and gold, 21cm dia. (cracked)



64.
A Derby gold anchor marked octagonal dish, London, outside decorated in the style of Giles, with blackberry swags and stylized flower groups, with a single tooled gilt band, mid 1770's, overall 24cm long.

65.
A Derby porcelain octagonal dish, probably London, outside decorated with turquoise, gilt and cream border with green rose swags and gilt suspended swags with a central feature of a rose group within a high reserve in gilt, unusual puce anchor mark, c.1775, 22cm long high line.

66.
A Derby custard cup, c.1770-75, green flower decoration with turquoise handle, gilt anchor and D mark, 6cm high.



67.
A rare Derby patch marked figure of a red squirrel, of unusually large size, standing on a oval flower encrusted base while eating a nut, c.1765, 10cm high. (restoration to ears)

68.
A Derby patch marked ewer, c.1780-84, decorated with monochrome panel of a river landscape with figures, and the reverse of a romantic figure playing a flute, both panels probably by Z Boreman, the body decorated with gilt strips, overall 26cm high. (AF)

69.
A pair of unusual large size 18thC coffee or chocolate cups, c.1770, decorated with Smiths blue bands and gilt strips, blue D shaped handle, blue marked crown over D with manuscript N mark, 7cm high. (2)

70.
A rare ogee moulded Derby coffee cup, having curved over Meissen type handle painted with good flowers, sprays in the style of Withers, c.1778-80, blue mark crown and D in blue with manuscript N mark, a Derby puce marked coffee cup, decorated with pink border and green husks above flower sprigs, c.1780, crown over D in blue with incised script N.

71.
A puce crown over D marked acanthus moulded coffee cup, with Smiths blue border and gilt drops above polychrome flowers sprays, c.1781-84, overall 6cm high, a good Derby two handled chocolate/caudle cup and cover, blue crown over D and incised N script mark, 1780-1, decorated with Smiths blue bands and grape and vine gilding and flower roundels in polychrome, with green husk swags, 9.5cm high overall.

72.
Derby coffee cups, both outside decorated in the styles of Giles, gold anchor marks to both, one decorated with a border of pink ground and gilt swags above flower sprays, the other with blue and gilt bands of flower sprays, c.1774-1783.

73.
Four Chelsea Derby tea bowl and a rare Chelsea Derby miniature tea bowl, c.1770, one tea bowl pineapple moulded with rare puce anchor mark, decorated with stylized acanthus flowers and leaves between gilt lines, 7.8cm dia., miniature tea bowl unmarked pink, border with green husks, rose spray to the bottom of tea bowl, 5cm dia., ogee moulded tea bowl, unmarked, (AF), ogee moulded tea bowl, gilt anchor and D mark, typical decoration of flower sprays, 8cm dia., Chelsea Derby tea bowl anchor and D mark in gold, decorated with unusual dentil border of puce and purple above a gilt crow's foot border with flower spray below, 7.8cm dia. (5)



74.
A rare Boreman decorated Chelsea Derby French shaped cup, with tremblouse stand gold anchor mark, marked and incised script N, 1778-1781, both cup and stand decorated with irregular shaped polychrome reserves, with tooled gilt surround with stylized river landscapes between Oeil-de Perdouse gilt/blue ground, probably Chelsea decorated, museum restoration to cup, cup 8.5cm high, stand 16.5cm dia.

75.
A large Derby mask ale jug, c.1775, with unusual decoration of grapes in similar style to the Egerton Service with two principle large flower groups and scattered insects, 22.5cm high, (cracked).

Grantham Ceramics & Asian Art Sale



- ▲ 76.
A rare Derby ice pail and cover,
 c.1775, of Egerton type with grapes and vine leaves, heads in a brown ground, green swags and husks with scattered moths, the base of the ice pail has interior decoration to mask the manufacturing joint, marked gold anchor, 26cm high.



- ▲ 78.
A Derby pierced perfume vase,
 c.1760, decorated with stylized birds in landscape within puce cartouches, a good landscape with figures and flower groups, patch marked, 19cm high.



79.
A Derby ale jug,
 c.1785-1787, painted with typical flower groups, in the style of Edward Withers but most likely by William Smith, puce cross baton and D in puce gilder number 2 for soar, firing cracked and glazed crazing, 19.5cm high.



- ▲ 80.
A rare Derby teapot and cover,
 of barrel form with rare moulding of birds and prunus with flower knop, probably outside decorated in the style of James Giles, border pattern of leaf and berry and the moulding picked out with gilt scrolls, red anchor mark and red no.5 to underside/cones, pattern marked c.1775, 14cm high.

81.
A Japanese circular moulded saucer dish,
 with brown edge painted with a figure and view of distant hills, the remaining surface of the dish moulded with rocks and watery landscape, 21cm dia., c.1750-1780.



- ▲ 83.
A mid 19thC English porcelain armorial dinner service,
 probably Coalport, c.1840, many pieces marked *A.B Daniell London*, with Vicimus Wolf crest, comprising of a large serving platter 55cm wide, another smaller, a lidded muffin dish, open dish, tureen and lid, six soup bowls and eighteen two sized dinner plates, each with Royal blue and gilt highlighted scroll decoration on a white ground. (a quantity)

82.
A Japanese Arita saucer dish,
 moulded with flowers, petals and leaves painted with a crane and carp, c.1750-1780, 21cm dia.

84.
A Chinese late Qing period fish bowl,
 of large proportion, famille rose decorated with panels of birds on flowering branches broken by a repeat scroll and flower pattern on a pink ground with an upper yellow and turquoise heart shaped banding, on circular unglazed foot, the interior decorated with fishes, unmarked, 36cm high, 43cm dia.



- ▲ 85.
A pair of 19thC Chinese Qing period bottle vases,
 with overhanging lip tops, inverted stems and bulbous bodies, profusely decorated with figures, with gilt highlights and an upper floral banding on circular feet, unmarked, 31cm high. (2)

86.
A late 19thC ivory fan,
 profusely carved with figures and flowers, with a filigree style centre raised with further figures, of shaped outline, 20cm high.

87.
Book.
 The Marks of Chelsea-Derby, of early crossed batons, useful ware, 1770-1790, together with supplements by Stephen Mitchell.

88.
A collection of Chinese and Japanese pottery and porcelain,
 comprising of a 19thC Meiji period Satsuma tea bowl, profusely decorated with figures on a gilt ground with red highlights, on circular foot, five character mark beneath, 5cm high, a Kyoto Satsuma vase of circular shouldered outline decorated with many figures, buildings and flowerheads, on circular foot, similar vase, Imari vase, stem vase, etc. (a quantity)



- ▲ 89.
A pair of Chinese ebonised hardwood carved buffalo figures,
 each with a repeat scroll decoration, set with figures to their backs, each on a pierced naturalistic base, 29cm high. (2)

90.
A late 19thC Chinese Qing period cloisonné box and cover,
 with elaborate dragon knop, each piece polychrome decorated flowers on a green ground, predominately in blue, green and yellow, with a sectional interior, unmarked, 16cm high.

91. A bronze desk seal, formed as an elephant on stepped concave base, unmarked, *8cm high*.

92. A pair of polished bronzed desk seals, formed as mystical birds, on hexagonal bases, unmarked, *6cm high*. (2)

93. An early 19thC Chinese Qing period blue and white vase, of trumpets form, decorated with warriors on horseback before foliage, on a circular foot, unmarked, *12cm high*, polychrome decorated, a crackle pottery vase and a Chinese blue and white octagonal shaped vase with pierced body, on shaped feet. (3)

94. An early 20thC Chinese late Qing period prunus vase, with compressed circular stem, the cylindrical body heavily decorated with flowers on a blue ground on circular foot, Single Line China mark beneath, *15cm high*.

95. Two early 19thC carved Chinese wooden cups, profusely decorated with bearded sage, trees, scholars and other figures, *6cm high*. (2)

96. An early 20thC Chinese cloisonné bowl and cover, decorated with dragon, on a red ground, predominately in blue and yellow with gilt highlights, the lift off lid revealing a plain interior in turquoise, on circular foot, *11cm high*.

97. A 19thC Chinese cloisonné jar and cover, on silvered ground, profusely decorated with an interior scene of vase on table, predominately in blue, red and yellow, the body decorated with panels of further vases, on a circular foot, Kangxi style floral fungus mark beneath, but later, *9cm high*.

98. An early 20thC Chinese cloisonné jar and cover, the domed lid decorated with scrolls on red ground with gilt highlights, the main body set with Imperial dragon with five claws in yellow, blue and green, on circular foot, *21cm high*.

99. A pair of 19thC Japanese cloisonné vases, each with slender trumpet stems and bulbous bodies profusely decorated with exotic birds, on a textured turquoise ground on circular feet.



▲ **100. A nest of four Chinese carved wooden tables,** possibly jumu wood, each of rectangular rounded outline with pierced rectangular scroll and flowerhead frieze, on bamboo style supports, (largest) *71cm H, 42cm W, 34cm D*.

101. A late 19thC Chinese hardwood low altar table, the rectangular top raised on a heavily carved scroll support with an outer geometric repeat banding, *29cm H, 115cm W, 41cm D*.

102. A 20thC Chinese cloisonné standard lamp, the metal fitting raised on a cylindrical stem broken by baluster and other sections, profusely decorated with geometric flowerheads predominately in yellow and blue, on an iron coloured ground, terminating in an octagonal base, *147cm high*.

103. An early 20thC Chinese cloisonné vase, of circular shouldered outline, profusely decorated with insects and flowers on a red ground, converted to a lamp, *40cm high*, a 20thC blue and white bowl with a flared rim, modern jardiniere on drainer stand, a Chinese blue and white Ming style ginger jar and another similar possibly Ming period. (a quantity, AF)

104. A porcelain vase, the shaped outline decorated with enamel panels of figure before mountains, in black and turquoise ground with an upper floral decoration, on square foot, probably Japanese Meiji period, converted to a lamp, *41cm high*, a 19thC famille celadon famille rose plate on green ground, a dish with red seal mark beneath, etc. (a quantity)

105. A Japanese Meiji period bronze vase, the inverted cylindrical stem with elephant handles raised with birds, the shaped body similarly decorated with a repeat geometric pattern raised with relief cast birds and insects, on a circular foot, converted to a lamp, unmarked, *44cm high*. (AF)

106. A Japanese Meiji period bronze vase, with cylindrical flowerhead stem and bulbous body flanked by pierced scroll flowerhead handles, on a circular base terminating in lotus leaf pad feet, converted to a lamp, *45cm high*. (AF)

107. An early 20thC Japanese blue and white pottery stick barrel, of cylindrical outline, profusely decorated with three clawed dragons, with an upper and lower geometric banding, unmarked, *62cm high*.

108. A pair of Chinese pottery figures of standing ducks, in blue on a shaped purple ground, impressed numbers beneath 072 and T80, *21cm high* and a Japanese Meiji period table top black lacquered jewellery cabinet. (3)

109. A Chinese Ming style blue and white porcelain vase, with compressed circular rim, shouldered body and circular foot, decorated with geometric floral pattern, on an off white ground, glazed to the underside, *20cm high*.

110. A pair of 18thC blue and white pottery jars and covers, each with compressed lids, unglazed necks and shaped bodies heavily decorated with houses, trees and mountains, on circular feet, *19cm high*. (2)

111. An 18thC Chinese blue and white stem dish, with flared rim on a compressed circular base decorated with prunus, unmarked, *19cm wide*. (visibly restored to the underside)



▲ **112. A 19thC Chinese cloisonné box,** of rectangular outline, centred with an exotic bird on a flowering branch, on blue ground with gilt highlights, part seal mark, *12cm wide*.



▲ **113. Various jadite soapstones and other ornaments,** to include dragon urn vase *12cm high*, exotic birds, malachite carved animal figures, frog, squirrel, etc. (a quantity)



▲ **114. A Chinese cloisonné cauldron vase,** with rope twist handles, the bellied body profusely decorated with flowers on a turquoise and blue ground, raised on triple supports with four character Southern Ming (Nan) mark beneath, *15cm high*.

115. Various 19thC and other Chinese porcelain, to include a famille vert sauce boat with flared rim, shaped feathered handle and floral decorated to interior predominately in green, blue and pink, *7cm high*, unmarked, various other footed bowls, to include a flared example with faux Kangxi mark beneath. (a quantity)

Grantham Ceramics & Asian Art Sale

116.
Various 19thC Chinese tea bowls,
footed bowls, etc., small famille vert pom pot with flowerhead top decorated with flowers predominately in green, pink and blue, on a circular foot, 13cm wide, three tea bowls and a celadon flared bowl and a pair of shaped Japanese sweetmeat dishes signed and decorated with birds and flowering branches in polychrome colours predominately in pink and green. (a quantity)

117.
A Chinese blue and white porcelain cylinder vase or brush pot,
of cylindrical outline with compressed trumpet stem and a upper floral banding, the main body decorated with birds on tree boughs, on a circular foot, uncircled stylized four character Jiaqing mark beneath, but probably late Qing period, 26cm high.

118.
A pair of late Japanese Meiji period cloisonné vases,
each of shouldered outline, decorated with flowerheads and geometric banding predominately in pink, green and blue, 18cm high, a lidded jar, another similar and a cauldron vase, etc. (a quantity)



▲ **119.**
A late 19thC Chinese Qing period cloisonné bowl,
the interior decorated with figures with an outer banding predominately in red, green and yellow on a blue ground, on circular foot, double red S mark beneath, 19cm dia.

120.
A large quantity of various 19thC and other hardwood Chinese stands,
to include a circular ebonised example with heavily carved frieze, 24cm wide, various others, a Japanese square stained example, other stands, mainly hardwood, etc. (a quantity)



▲ **121.**
A Chinese porcelain double gourd vase,
in famille jaune decoration, set with panels with exotic birds on flowering branches predominately in yellow, blue, green and pink, on circular foot, uncircled four character mark beneath, probably early 19thC, 18cm high.

122.
An 18thC export porcelain plate,
polychrome decorated with flowers predominately in orange, green and blue, 24cm dia., Arne Biiun Rasmussen label verso, 24cm dia., and a 19thC blue and white tea bowl decorated with Chinese vases, pagoda, etc., unmarked. (2)

123.
A Chinese Ming blue and white pottery vase,
with unglazed rim, the body decorated with a repeat pattern of flowers and entwined branches, on a circular foot, unmarked, converted to electricity, 55cm high.

124.
A late 19th/early 20thC cloisonné vase,
with a compressed trumpet stem and shouldered body profusely decorated with geometric banding, flowerheads and stylized birds predominately in blue, red, green and yellow on a white ground, on circular foot, converted to electricity, unmarked, 45cm high.

125.
A Chinese Ming style vase,
with unglazed neck, shoulder and base, profusely decorated with flowerheads on a crackle ground, converted to electricity, unmarked, on wooden plinth base, 35cm high, and a pair of crackle pottery vases profusely decorated with fighting warriors, some on horseback, with raised dragons and unglazed sections, each converted to electricity. (3, AF)

126.
A 19thC Japanese Meiji period vase,
polychrome decorated and profusely decorated with birds on flowering tree boughs, predominately in pink and yellow, on a circular foot, black signature to the body, converted to electricity, 55cm high. (principally Meiji period, AF)

127.
A 19thC Chinese double gourd vase,
the bulbous body with double neck, decorated with buildings with gilt highlights and flowers, on a blue ground, on circular foot, converted to electricity, 46cm high.

128.
A pair of 19thC Chinese cloisonné vase,
each of cylindrical outline, profusely decorated with an upper floral banding and further flowers, butterflies and insects to the body, predominately in green and red on a blue ground, each on carved wooden bases and converted to electricity, 56cm high. (2)

129.
A Chinese porcelain fish bowl,
of large proportion, the overhanging lip set with a stylized heart shaped banding, the interior decorated with fish in orange and blue, with an outer repeat flowerhead and entwined decoration, on circular foot, stylized six character mark beneath, 23cm high.

130.
An early 20thC oriental parasol,
with cylindrical handle raised with bone carved flowerheads, with a plain wooden stem and material end in outer case, 62cm wide. (AF)

131.
A 20thC Chinese pottery Ming style candlestick,
with flowerhead dish holder, baluster stem and relief cast ducks, polychrome decorated predominately in red, yellow and pink on a black and yellow ground, on a circular foot, unglazed, 31cm high.



▲ **132.**
A 19thC Cantonese famille rose punch bowl,
of large proportion, the interior and exterior decorated with panels of ladies, interior scenes, pagoda, etc. broken by further panels of flowers, profusely decorated, on circular foot with gilt highlights, on carved wooden stand, unmarked, 44cm dia.

133.
A Chinese porcelain dish,
of oval outline, decorated with flowers and entwined flowers, on shaped feet, Kangxi style seal mark, but 20thC, 22cm wide, a modern tea bowl, etc. (a quantity)

134.
A Chinese porcelain jardiniere,
of tapering circular outline, the main body decorated with flowerheads on a circular foot, unmarked, together with an associated stand with entwined supports, with circular attachment base, the jardiniere 20cm high.

135.
A pair of Kyoto style pottery Satsuma jardinieres,
on stands, each with shaped bowls, with relief rope twist handles, cylindrical stems, each profusely decorated with figures, flowers and buildings, predominately in green, pink, orange and black, with white dot highlights, on domed feet, 78cm high. (2)

136.
19thC School.
Still life, summer flowers in vase on table aside plate, and another in Chinese vase, 30cm x 21cm, wood block prints, seal mark and signed. (2)



- ▲ 137.
Five various 19thC Canton ivory figures, probably chess pieces, to include bearded sage wearing flowing robes, on inverted base, 13cm high, another sage, two figures glazed red. etc. (5)

138.
A late 19th/early 20thC Mongolian horse whip, with turned handle, metal stem and rope twist end, the main body 22cm wide, and another similar. (2)

140.
A Sunderland lustre wall plaque, of square form, 'Thou God, See'st Me', c.1850, 21cm x 21cm.

141.
A Robinson and Leadbeater Parian Commemorative bust of Queen Victoria, 1837-1897, to commemorate the 60th year of her reign, marked R and L, old restoration to lace hair net, 23cm high.



- ▲ 142.
A first period Worcester blue and white painted dinner plate, c.1770, decorated with pine cone pattern, minor rim chip, 24cm dia.

143.
A Derby puce mark acanthus moulded tea bowl and saucer, decorated with an undulating bond of polychrome and gilt sprigs, pattern no. 111, gilder no. 8 and 5, c.1790, 14cm dia.



- ▲ 139.
An unusual Spode mushroom ground part tea set, including three saucer dishes decorated with fine English flower groups with gilt cartouches on a mushroom ground, marked Spode and pattern no. 3762, comprising of five saucers 14cm dia., three saucer dishes 18cm dia, three tea cups and one breakfast cup, c.1810. (13 pieces)

144.
A Davenport jug, mounted with white metal cover and rim, the body decorated with typical fox hunting scenes of 'The Kill' below a brown glazed neck, 21cm high, together with a smaller version, but lacking metal mounts, 11cm high, both marked, impressed Davenport mark over anchor. (2)

145.
A Davenport Toby jug, c.1820, of typical form, of a seated figure with black tricorne hat and blue coat with crimson cuffs holding a ale jug, impressed Davenport above anchor marked, overall 25cm high. (rim chips restored)

146.
A part set of three graduated Davenport marked stoneware jugs, decorated in the imari style and pallet, c.1820/30, printed Davenport anchor and stone china in blue. (3)

147.
A rare Davenport egg ring together with a Davenport egg cup, the egg ring of hoop form moulded with 'C' scrolls to rim, the edge picked out in gold printed Davenport mark within a scroll above an anchor in red, c.1830, 5cm dia, the egg cup decorated with an acanthus band in slate grey below a single gilt line marked Davenport within a scroll above an anchor in blue, c.1860, 6.5cm high. (2)

148.
A pair of Davenport pearlware vases, with square cut handles decorated with oriental figures within landscapes on a black ground, c.1815, marked with printed DAVENPORT, 19cm high. (2 pieces, minor rim chips and hairlines)

149.
A rare Davenport porcelain dinner plate, with central armorial device, marked with a puce printed mark Manufacturers To Their Majesties and pattern no. 379, (for another example of this service see G Goddard Encyclopaedia of British Porcelain, manufacturer's page 285, fig. 134), 21cm dia., c.1831-37, together with another Davenport armorial dinner plate marked with the printed Davenport Longport mark in puce, c.1860, 26cm dia., and a Davenport pottery armorial of a falcon on a gloved hand painted in puce, impressed Davenport and anchor mark, 20cm dia, c.1830. (3)

150.
Five Davenport child's cup and saucers, in a green transfer pattern of cottages, a sepia transfer of a church view, a sepia transfer leaf border pattern cup and saucer, a painted green sprig pattern cup and saucer and a Sunderland lustre decorated cup and saucer, plus a child's plate printed with classical romantic scene in green, a saucer printed in purple with an oriental landscape, Davenport printed and impressed marked, plus a doll's service plate printed in blue, various impressed and printed marks, c.1835-1860. (13 pieces)

151.
A Davenport pottery Bargeware type octagonal jug, named and dated 1850, impressed marked and granite painted in simple style with flowers in red, blue, black and green, 25cm high.



- ▲ 152.
Davenport pearlware ribbon type plates, c.1795, impressed Davenport marks, one decorated with grapes and vine border with a brown rim, the other with a printed willow pattern in blue, both 18cm dia. (2)

153.
Davenport porcelain. Various cups and saucer / plate together with the base of a pastel burner decorated in the Imari style, various marks, c.1815-1880. (6)

154.
A Davenport soup plate in Ironstone, decorated with an Imari pattern marked with rose printed mark of Davenport Longport Staffordshire, stone china within a garter style wreath, c.1820-40, plus two plates with the printed Davenport Longport mark in red, c.1880. (3)

155.
Davenport Porcelain. Comprising of six cups and saucers, various dates and marks, c.1810-1880. (12)

156.
A well painted English spill vase, c.1820, decorated with various English flowers, probably Spode.

Grantham Ceramics & Asian Art Sale



- ▲ 157.
Davenport porcelain.
Comprising of seven cups and saucers, various dates, c.1810-1880. (14)

158.
A good Davenport nursing or invalid pottery cup,
decorated with romantic scenes with a church and figures, c.1825, printed marks.

159.
A pearlware bullet shaped teapot and cover,
c.1815, decorated with printed oriental scenes of Chinese figure, man at the door pattern, 15cm high. (cover and spout AF)

160.
Davenport pottery.
Various plates and dishes, including bamboo and peony pattern soup plate, c.1815, a Suez pattern dinner plate, a oriental landscape dessert plate, a flower printed saucer dish, and a pair of flow blue romantic pastoral wall plates, c.1815-1900. (6)

161.
A blue and white pottery Davenport knife rest,
printed with corn husks and fruit, c.1815, printed Davenport mark, 8cm long.

162.
A rare Davenport child's service teapot and cover,
c.1860, decorated in pink lustre and green/red flowers, impressed mark, 9cm high.

163.
A Davenport centre porcelain compot,
pattern 1011, consisting of turquoise blue panels with gilded cartouches around a mushroom ground panel, blue printed Davenport mark, c.1860.

164.
A Davenport stand,
en suite to the previous lot.

165.
A Davenport 'D' shaped pearlware cache or bough pot,
c.1810, decorated with typical border pattern of red flowers with green and black leaves, moulded with oak leaves dessert plate, the leaves picked out in vibrant colours of yellow, green, orange and turquoise, impressed Davenport and anchor mark, 21cm dia.



▲ 166.
A very unusual Davenport pearlware dessert plate,
naturalistically moulded with oak leaves, the leaves picked out in vibrant colours of yellow, green, orange and turquoise, impressed Davenport and anchor mark, c.1810, 21cm dia.

167.
An interesting Davenport trio,
decorated with stylized flowers, c.1825, also a Davenport slate blue printed coffee cup and saucer, c.1850, and a Davenport tea cup and saucer, Davenport Longport puce printed mark, c.1870. (7)

168.
A Davenport terracotta ware guglet or water bottle,
unmarked, decorated with printed sepia cottage roses, c.1860, 25cm high.

169.
A Davenport two handled serving dish,
together with a dessert dish, both decorated with central polychrome landscapes on green ground, both marked Davenport and anchor in blue and printed Davenport Longport mark, c.1845-1870. (2)

170.
A Davenport coffee cup,
decorated with superb flower panels below a rich green ground high line, puce Davenport and anchor mark and 1, c.1830, together with Davenport tea cup and saucer decorated with green Davenport and anchor in red mark, c.1825, and a Davenport cup and saucer decorated with green leaves, puce marked Davenport and anchor mark in red plus a Davenport coffee cup and saucer printed red scroll pattern, green Davenport Longport mark, c.1883. (7)

171.
A Davenport cream jug,
c.1860, printed with flowers below a green border, Davenport and anchor mark in blue, together with a Davenport Paris shape creamer, c.1860, decorated with gilt bands. (2)



▲ 172.
A rare marked and finely painted Davenport soup dish,
superbly painted with flower sprays, rare printed mark Manufacturers To Their Majesties 1830-1837, in puce, 26cm dia.

173.
A rare Davenport miniature fluted coffee can,
with trembleuse saucer pattern no. 2358, retailers printed mark for John Mortlock & Co London, 4.5cm high.

174.
Eight various Davenport serving dishes,
dates from 1840-1880. (8 pieces)

175.
Davenport.
Two blue and white printed coffee cups and saucers, Davenport Longport printed mark, c.1880, plus Davenport pair of small blue and white painted with blue sprigs side plates, script Davenport mark, c.1825. (6 pieces)

176.
A Davenport violet printed soup dish from a British Scenery,
Service impressed mark, 24cm dia., plus a Davenport blue and white printed tureen base, impressed mark, both c.1830, 24cm long. (2)

177.
A Davenport small shallow pearlware dish,
c.1815, decorated with dragons on a brown seaweed ground below a Greek key border, 20cm dia., and a small side plate printed in blue with dragons, stone china body with stone china Davenport mark, c.1810, 16cm dia. (2)

178.
A Davenport bowl from a washing set,
impressed mark, c.1850, 25cm dia., a Davenport small sauce boat printed with the willow pattern in blue and white, Davenport printed mark, c.1850, a pair of Davenport side plates with a simple gilt border pattern, c.1850, 14cm dia., a Davenport Indian tree type pattern side plate, 17cm dia., Longport mark printed, c.1870, 17cm dia., and a Davenport side plate decorated with stylized flowers on a yellow ground, c.1870, 20cm dia. (6)



▲ 179.
A Davenport bi colour printed pearlware plate,
printed in green with a romantic scene below a red printed border of hops on a red ground, impressed and Davenport printed mark, 20cm dia.

180.
A set of four Victorian lithophanes, of river and coastal scenes, impressed marks 800, 831, 828 and 831, c.1880, 7cm long. (4)



- ▲ 181.
A Davenport fruit dish or comport from the 1831 William IV Coronation Banquet service, the centre painted with a patriotic spray of roses, thistles, leek and shamrock tied with a Union ribbon, the interior rim with floral reserves on a green ground hatched in gilt, printed factory mark, 33cm across. (AF - conserved with nine metal staples.) NB. This service was commissioned by the King for his 8th September 1831 Coronation. The incorporation of the symbolic flowers was a specific request of William IV to John Davenport. The service earned the factory their Royal commission.



- ▲ 182.
A fine Rockingham plate, decorated by Thomas Steele, with fruit and flowers, the border with a Earl's cornet and initials E C below a shark tooth gilded border, red griffin marked, c.1828, 24cm dia.

183.
A rare Rockingham French Empire style cup and saucer, pattern no. 674, Rockingham 1745-1842, by A & A Cox, page 372 colour pattern 145, and a cup and saucer from this service, flowers by Edward Steele, pattern no. 674 high line, red griffin mark, c.1826-30.

184.
A Chelsea gold anchor marked moulded plate, decorated with flower centre and border of exotic birds and branches, c.1756, 22cm dia. (chip and hair line damage)

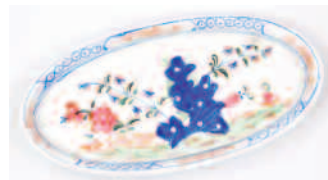
185.
A French 18thC Sevres plate, decorated with fruit and flowers to the the centre with a apple grand green border with panels of exotic birds, crossed Sevres marks with R M P initials.

186.
An unusual Caughley moulded deep dish, printed with the fisherman pattern within a cell border, the moulding copying the Tournay mouldings, impressed Salopian mark, c.1780, 21cm dia.

187.
A Caughley plate, printed with stylized flower sprigs below a thick blue and shark tooth border, 'S' marked, c.1780, 21cm dia.

188.
A Caughley coffee cup, painted in polychrome with a centre panel of flowers within a gilt cartouche and scattered sprays below a gold and puce crossed hatched border, unmarked, and a Caughley tea bowl painted with back to back roses below a inner red and puce berry border, c.1775. (2)

189.
A pair of Regency moulded dessert plates, c.1830, decorated with polychrome landscapes with a gold and grey border, possibly Ridgeway, 22cm dia. (2)



- ▲ 190.
A rare factory X, Y, Z spoon tray, of oval form, decorated with a version of hollow rock pattern, c.1790, workman's mark to reverse, 14cm high.



- ▲ 191.
A pair of unusual Derby shell shaped dishes, decorated with mountainous landscapes within a gilt floral border, c.1820, red marked, 22cm overall. (2)

192.
Unusual Derby coffee cans, c.1830, together with two Chinese pieces, c.1760, the Derby coffee can probably made as an addition to an original Chinese service, decorated in monochrome romantic landscape below a gilded tooth and grey 'X' hatched border and inner border of arrow and darts, the Chinese originals with monochrome oriental scenes below a similar border, Derby red marked, the Chinese unmarked. (5 pieces, AF)

193.
An unusual Derby botanical shell shaped dish, decorated with named flower Bachelors Buttons in red in the style of William Quaker Pegg, c.1825, within an unusual turquoise ground border, red Derby mark.

194.
A Bow coffee cup, c.1760, decorated with oriental figures and children, with an inner red shark tooth border, unmarked.



- ▲ 195.
A fine Chaffers and Christian Liverpool small sauce boat, decorated in blue and white with a oriental landscape to one side and flowers to the other, 'X' hatched inner border, bears an inventory old label *Authenticated by Henry Sandon at Lowestoft 18.3.99*, unmarked, 12cm high overall.

196.
An early Derby coffee cup, c.1758, decorated with flower sprays, by the Cotton Stem Painter, the cup of square early shape with pixie ear handle, unmarked, 6cm high.

197.
An early workman's marked Worcester blue and white tall chocolate cup, of herring bone moulded form with unusual handle painted with flower sprays and insect in blue and white, workman mark, c.1756-58, 6cm high.



- ▲ 198.
An early Lowestoft teapot and cover, decorated with a man on the bridge, pattern in blue and white below a 'X' hatched border, marked with workman's no. 6 to footrim, c.1760, 12cm high. (restored to the cover)



- ▲ 199.
A Lowestoft bell shaped tankard, decorated in blue and white with printed roses and carnations, c.1760 high line, 9cm high.

200.
A Bow figure of a Putto, raised on a 'C' scroll base, c.1760, unmarked 12cm high.

201.
A Chamberlain Worcester Regent body chamberstick, painted probably by Thomas Baxter, with a view of Mr Barr's Garden in Worcester, marked in full *Chamberlain Worcester, 155 New Bond Street, London*, c.1820.

Grantham Ceramics & Asian Art Sale

202.
A Pinxton covered sucrier or sugar box and cover,
 c.1799, decorated in red enamels with red sprigs pattern no. 1, unmarked, and a Pinxton saucer decorated in brown and gilt border, pattern no. 281, c.1799, (for both these patterns and shapes see N D Gent 'The Patterns and Shapes of the Pinxton China Factory 1798-1813). (2)

203.
Gent (Nicholas).
 The Pinxton China Factory, privately printed in 1996, limited edition 1000 copies only.

204.
The Hoffmeister Collection catalogue volumes I and II,
 together with the English translation of all three volumes, case bound, and volume I and volume II cased, dated 1999 and 2000. (3)

205.
A large pair of Coalport cache or plant pots,
 c.1815, decorated overall with cabbage roses between gilt reserves, the cache pot with a paid of blind handles to each, unmarked, 20cm dia., 16cm high. (2 pieces, one AF)

206.
A large guard's regiment Coalport milk jug,
 c.1910, with moto *Tria Juncta in Uno*, with Coldstream and Scotsguard regimental badges, impressed mark PQ, together with a Minton regimental plate with blue ground and Gordon Highlanders regimental badge, c.1900. (2)

207.
A Booths pottery plate,
 decorated with exotic birds within gilded cartouches on a blue scale ground, c.1900, unmarked, 23cm dia.

208.
A rare Wedgwood child's service trio,
 of tea cup, saucer and small plate, c.1800, impressed WEDGWOOD marked, saucer 10cm dia.



▲ **209.**
A Japanese Taisho period netsuke,
 formed as a gentleman in flowing robes aside baskets, two character mark beneath, 5cm high.

210.
A Japanese Taisho period netsuke,
 formed as a gentleman in flowing robes, aside baskets, two character mark beneath, 4cm high.

211.
A Japanese Taisho period netsuke,
 of a gentleman in seated pose wearing flowing robes holding hammer before block, two character mark beneath, 4cm high.

212.
A Japanese Taisho period netsuke,
 formed as a figure in flowing robes holding mask, two character mark beneath, 4cm high.

213.
A Japanese Taisho period netsuke,
 of a gentleman in seated pose wearing flowing robes holding hammer before block, two character mark beneath, 4cm high.

214.
A Chinese late Qing period chopstick case,
 of shaped cylindrical outline, with metal banding, 24cm wide and two chopsticks.

215.
Various Eastern items,
 metalware, etc., an elaborate copper and base metal prayer box, with inverted cylindrical top and shaped handle, 20cm wide, a casket set with two ovals of an Indian lady and gentleman, opium pipe, brass elephants, caskets, cylindrical jar, wooden goblet, carved figures, etc. (a quantity)

216.
A carved jade pendant,
 formed as fish, 7cm wide, various other carved jade coloured items, soapstone carved Buddha group, further gods, early 20thC Chinese doll with embroidered limbs, etc. (a quantity)

217.
Various cloisonné, etc.,
 to include an early 20thC Chinese jar and cover of cylindrical outline, profusely decorated with flowers on a turquoise ground with gilt highlights, 9cm high, bowl, vase, snuff bottles, etc. (a quantity)

218.
A pair of Chinese porcelain famille jaune vases,
 each of a shouldered outline, profusely decorated with animals, on a yellow ground, on circular feet, double ring red seal mark beneath, 10cm high. (boxed)

219.
A Chinese cloisonné bowl,
 of circular outline profusely decorated with flowers on a green and blue ground with an upper black geometric banding, 26cm dia., complete with a shaped wooden base.

220.
A pair of 19thC Persian metal vases,
 each with cylindrical stems and bulbous bodies, later converted to electricity, 42cm high, a bronzed figure of a seated bearded sage in flowing robes, various oriental ceramics, ribbon edge bowl, a pair of footed bowls, etc. (a quantity)

222.
A pair of soapstone bookends,
 each with three clawed dragons, in brown and green on shaped bases, 19cm H, 12cm W, 7cm D. (2)



▲ **221.**
A Japanese Taisho period ivory Okimono figure,
 of a gentleman in flowing robes holding monkey and sword being attacked by eagle, on naturalistic base, marks beneath, 18cm high



▲ **223.**
An 18thC Chinese export porcelain tankard,
 the bulbous body profusely polychrome decorated with figures predominately in green, blue and purple, on a circular foot, with plain handle and upper yellow banding, 12cm high.

224.
Indian School.
 Procession on horse, camel and elephant, hand touched probably acrylic on silk material, unsigned, 42cm x 85cm.

225.
A pair of Japanese Meiji period porcelain plates,
 of octagonal outline, polychrome decorated with figure leading cow before birds on flowering branches, with an outer geometric banding, unmarked, 22cm wide. (2)

Further lots are included in this sale. Please refer to online catalogue for details.

Thinking of selling Ceramics or Asian Art?



A late 18thC/early 19thC Pinxton porcelain tankard, polychrome decorated with Hardwick Hall to the front, with various hand painted flowers with gilt highlights to the cylindrical body with a gilt highlighted leaf capped handle on a circular foot, unmarked, 11.5cm high.

Sold for £5,400



A 19thC cloisonné enamel vase, of double lozenge outline set with orbs, the main body gilt highlighted and decorated with flowers in a geometric pattern, predominately in blue and turquoise on a shaped foot, unmarked, 21.5cm high.

Sold for £3,100

Entries now invited for the Grantham winter catalogue.

INFORMATION FOR BUYERS

1. **Introduction:** The following informative notes are intended to assist Buyers, particularly those inexperienced or new to our salerooms. All sales are conducted on our printed 'Conditions of sale' which are readily available for inspection and normally accompany catalogues. Our staff will be happy to help you if there is anything you do not fully understand.
2. **Agency:** As auctioneers we usually contract as agents for the seller whose identity, for reasons of confidentiality, is not normally disclosed. Accordingly, if you buy your primary contract is with the seller.
3. **Estimates:** Estimates are designed to help buyers gauge what sort of sum might be involved for the purchase of a particular lot. The lower estimate may represent the reserve price and certainly will not be below it. Estimates do not include the buyer's premium or VAT (where chargeable). Estimates are prepared some time before the sale and may be altered by announcement before the sale. They are in no sense definitive and are subject to constant revision.
4. **Buyers premium:** The 'Conditions of sale' oblige buyers to pay a buyer's premium at 20% on the hammer price of each lot purchased with a minimum of £2 per lot. In the case of lots purchased 'Live On-line' or via www.the-saleroom.com or www.i-bidder.com this will be charged at 25% on the hammer price. In addition, VAT is payable on this premium (see below).
5. **VAT:** An asterisk (*) indicates that VAT is payable by the purchaser at the standard rate imposed by current UK law on the hammer price as well as being an element in the buyer's premium, lots are noted in the saleroom by a red dot on the lot number. This imposition of VAT is likely to be because the seller is registered for VAT within the European Union and is not operating the Dealers Margin Scheme or because VAT is due on importation into the UK. The double symbol (**) indicates that the lot has been imported from outside the European Union and the present position is that these lots are liable to a reduced rate of VAT on the gross lot price (i.e. both the hammer price and the buyer's premium). Lots which appear without either of the above symbols indicate that no VAT is payable on the hammer price. This is because such lots are sold using the Auctioneers' Margin Scheme and it should be noted that the VAT included within the premium is not recoverable as input tax. (VAT rates are changing with frequency, please check with HMRC. VAT will be charged as set by Government at the time of sale.)
6. **Condition and description of lots.** We are primarily, agents for the seller. We are dependent on information provided by the seller and whilst we may inspect lots and act reasonably in taking a general view about them we are normally unable to carry out a detailed or any examination of lots in order to ascertain their condition in the way in which it would be wise for a buyer to do. Intending buyers have ample opportunity for inspection of goods and, therefore, accept responsibility for inspecting and investigating lots in which they may be interested. Please note carefully the exclusion of liability for the condition of lots contained in the 'Conditions of sale'. Neither the seller nor we, as the auctioneers, accept any responsibility for their condition. In particular, mechanical objects of any age are not guaranteed to be in working order. However, in so far as we have examined the goods and make a representation about their condition, we shall be liable for any defect which that examination ought to have revealed to the auctioneer but which would not have been revealed to the buyer had the buyer examined the goods. Additionally, in specified circumstances lots misdescribed because they are 'deliberate forgeries' may be returned and repayment made. There is a 21 day time limit from the date of sale, not date of collection or receipt. (The expression 'deliberate forgery' is defined in our 'Conditions of sale').
7. **Electrical goods:** Items are tested by a qualified electrician for SAFETY ONLY. An item that passes the PAT safety test may not work. Conversely, an item that fails the test may work with just minor repair. 'Working Order' and 'Safe' are two completely different concepts. The only thing you may take for granted is that the item will be safe at the point of sale. Items that have failed will have their cabling cut to source, labelled and sold 'For Trade Only'. To use the object you will have to change it radically from what was sold to you. Therefore, the Auctioneers cannot be held responsible after the point of sale. Those items sold genuinely as 'antiques or collectables' will not have been tested and if bought for use must be checked over for compliance with safety regulations by a qualified electrician before use. This is an express condition.
8. **Export of goods:** Buyers intending to export goods should ascertain (a) whether an export licence is required and (b) whether there is any specific prohibition on importing goods of that character because, e.g. they may contain prohibited materials such as ivory. Ask us if you need help.
9. **Bidding in person:** Some form of identification with proof of address will be required if you are unknown to us. Bidders may be required to register before the sale commences and lots will be invoiced to the name and address on the registration form. Account transfers will not be recognised or facilitated under any circumstances.
10. **Absentee bidding:** Commission bids may be left with the auctioneers indicating the maximum amount to be bid excluding buyers' premium. They will be executed as cheaply as possible having regard to the reserve (if any) and competing bids. If two buyers submit identical commission bids, the auctioneers may prefer the first bid received. If there are genuine reasons why you are unable to leave a Commission Bid and you wish to bid by telephone we may accommodate on lots where your opening bid will be £500 or above. There are inherent dangers with this practice; therefore all arrangements shall be entirely at the bidder's risk. Absentee bid instructions must be received by telephone, fax or email 12 hours prior to the sale.
11. **Live Internet Banking:** In completing the bidder registration on www.the-saleroom.com and providing your credit card details and unless alternative arrangements are agreed with Golding Young Limited, you
 - (i) authorise Golding Young Limited, if they so wish, to charge the credit card given in part or full payment, including all fees, for items successfully purchased in the sale via www.the-saleroom.com or www.i-bidder.com, and
 - (ii) confirm that you are authorised to provide these credit card details to Golding Young Limited through www.the-saleroom.com or www.i-bidder.com.
12. **Methods of payment:** Accounts are due for settlement SALEDAY. The following methods of payment are acceptable. There will be NO EXCEPTIONS to this policy. To avoid undue embarrassment for yourself or our staff, please do not ask for preferential treatment.
 - i. **Cash.** Single payments up to £7,000 only.
 - ii. **Debit Card.** No limit with chip & pin. (CNP limit £500).
 - iii. **Credit Card.** No limit with chip & pin. (CNP limit £500).
 - iv. **Bank Drafts & Building Society Cheques.** No limit. Due to forgeries, we will retain the goods for 3 working days to establish clearance of funds.
 - v. **Cheques.** Accepted up to the limit of the guarantee card for immediate clearance. For sums exceeding this, and you are not known to the auctioneers, we will retain the goods for 7 working days to establish clearance of funds.
 - vi. **Bank Transfer.** Please see details on our website.
13. **Collection and storage:** Goods can be collected as soon as they are paid for and within two working days following the sale. If goods remain with us and we have no contrary written advice of your intentions the items will be moved to storage and reasonable labour charges levied and storage at the rate of £2+vat per lot per day thereafter for small items and £10+vat per lot per day for furniture and large items.
14. **Postage and packing:** Options for buyers are available at www.goldingyoung.com/buying-shipping or ask a member of staff.

Lots subject to normal VAT rules are marked in the text-only catalogue with a single asterisk character (*) or a single dagger symbol (†) to indicate a VAT added rate of 20%.

Lots subject to normal VAT rules are marked in the text-only catalogue with a single 'at' character (@) to indicate a VAT inclusive rate of 20%.

Lots subject to normal VAT rules are marked in the text-only catalogue with double asterisk characters (**) or a double dagger symbol (§) to indicate a VAT added rate of 5%.

Lots subject to normal VAT rules are marked in the text-only catalogue with double 'at' characters (@@) to indicate a VAT inclusive rate of 5%.

Lots marked in the text-only catalogue with a bullet character (•) are subject to the Artist's Resale Right Scheme.



The wrong time to find out
what it was worth...



Over 40 million pounds of antiques & fine art valuation
in UK, Europe, Asia, Africa & The Americas since January 2014.

ESTD
1864
GOLDING YOUNG



William Gregory MRICS and Colin Young MRICS
are RICS Registered Valuers and
offer free advice for Insurance, Tax Planning and Probate reporting
and of course the sale of single items and collections.

The Bourne Auction Rooms
+44 (0) 1778 422686

The Grantham Auction Rooms
+44 (0) 1476 565118

The Lincoln Auction Rooms
+44 (0) 1522 524984

CHARTERED AUCTIONEERS & VALUERS ♦ ARTS & ANTIQUES SURVEYORS



goldingyoung.com

EST
1864
GOLDING YOUNG



Thinking of selling?

Executors, solicitors, accountants, insurers, corporations and government departments, have to exhibit due diligence when instructing. Use this checklist to do the same, with a few reasons why you may wish to choose us.

We are regulated by RICS
Better Regulation for Us.
Better Protection for You.
Accept Nothing Less.

Our online catalogues
For over 20 years our catalogues have been online and our experience ensures they are placed in front of the right buyers in the global market.

Our sales results
July 2018 saw our 117th consecutive month with a sale at either Bourne, Grantham or Lincoln producing a sold rate of over 90%. Good advice, great results for hundreds of vendors every month.

Join their success with an entry in our next sale!

goldingyoung.com

HOUSE CLEARANCE

If there is that hidden 'find', it will be to your direct benefit.

Every week we take instructions for House Clearance for all of the prominent firms of Solicitors in the area, as well as from Private Individuals, Trustees and Executors.

If you are dealing with the content of a property, please contact us at the earliest point.

A visit to the premises by one of our qualified and experienced appraisal staff will offer the best advice for Security, Valuation and Sale.

DISPOSE OF NOTHING

Often things thought to be rubbish are saleable.

IMMEDIATE ACTION IS REQUIRED

Once a property is uninhabited it is a target for burglars and your insurance may be invalid.

Items removed from premises are listed and handled by our professional carriers. Goods are then allocated to the next appropriate sale to ensure the highest sale return.

We also deal with the unsaleable residue, disposed of in the most cost-effective and environmentally friendly way, giving a total service.



PROPERTIES CLEARED, PROMPTLY AND EFFICIENTLY

Call: John Ireland MA MRICS - **01778 422686**
For Bourne, Stamford, Peterborough Region and Southern Counties

Call: Craig Bewick BA (Hons) MRICS FNAVA - **01476 565118**
For Grantham Region and The Midlands

Call: John Leatt ASFAV - **01522 524984**
For Lincoln Region and Northern Counties

Summer reView

It has been a very busy summer for auction sales with the crescendo of all three salerooms having to hold extended two-day sales in July offering just under 5,000 diverse lots in that month alone.

It has been a very busy summer for auction sales with the crescendo of all three salerooms having to hold extended two-day sales in July offering just under 5,000 diverse lots in that month alone.

Grantham started the 'hot-lot-wave' with over 400 lots purely from the estate of Lance Gay, a well respected collector and attendee at Golding Young sales. For many of his silver and jewellery lots it was second time under the hammer for me having already sold so much of it to him from a variety of previous collections and estates over the decades.

Bourne followed with one of the most interesting and complicated consignments to realise. The estate of Rolls Royce enthusiast John Little near Spalding saw a tender sale of over 170 lots of Rolls Royce parts and spares followed by the auction sale of his mid-restoration 1935 Phantom III, known as 34-EX. In October 1936 The Autocar magazine published a road test report of two Phantom III cars, 34-EX was subjected to lengthy trials and the car was used to provide driver data and performance figures. This particular car was famously tested fully laden with its original large Hooper limousine body completing an historic journey across the Sahara desert. All this provenance it made up for fact that it was still in hundreds of pieces looking like an oversized Meccano set, but still achieving a hammer price of £16,000.

Lincoln completed the hat-trick of sales with long standing clients of the firm clearing The Estate House on The Avenue in Harewood, near Leeds selling a fine family collection of Georg Jensen silver from the 500+ lots consigned. Artworks from the property are included in this catalogue.

As we look forward to the Autumn sale programme we will be going to weekly sales until December and the Grantham Asian Art Sales have now been extended to incorporate other fine ceramics. The next sale on the 5th September already includes a comport from the Coronation Banquet of George IV in 1831.

Finally, my congratulations go to two of our valuers on passing professional examinations and gaining further qualifications in recent months. Craig Bewick at Grantham is now a member of RICS and Alastair McPhie-Meiklejon at Louth is now member of NAVA.

We look forward to your support at future sales.

Colin R Young MRICS FNAVAASFAV



George III bracket clock by John Archambo
SOLD for £5,000



Art Deco dancer by Demetre H Chiparus
SOLD for £15,000



Silver tazza by Georg Jensen
SOLD for £1,700



1935 Rolls Royce Phantom III
SOLD for £16,000

The Bourne Auction Rooms
Spalding Road, Bourne,
Lincolnshire PE10 9LE

E: bourne@goldingyoung.com
T: +44 (0) 1778 422686
F: +44 (0) 1778 425726

London & South Appointments
E: london@goldingyoung.com

The Grantham Auction Rooms
Old Wharf Road, Grantham,
Lincolnshire NG31 7AA

E: grantham@goldingyoung.com
T: +44 (0) 1476 565118
F: +44 (0) 1476 561475

The Louth & Wolds Office
5 Mercer Row, Louth
Lincolnshire LN11 9JG

E: louth@goldingyoung.com
T: +44 (0) 1507 661864

The Lincoln Auction Rooms
Thos Mawer House, Station Road
North Hykeham, Lincoln LN6 3QY

E: lincoln@goldingyoung.com
T: +44 (0) 1522 524984
F: +44 (0) 1522 681804

The Stamford & Rutland Office
1, The George Mews
Station Road, Stamford
Lincolnshire PE9 2LB

E: stamford@goldingyoung.com
T: +44 (0) 1780 751666