



EST
1864

GOLDING YOUNG

Fine Art Sale

Wednesday 26th February 2020



CHARTERED AUCTIONEERS & VALUERS • ARTS & ANTIQUES SURVEYORS

PROBATE – INHERITANCE TAX ASSESSMENT

For many Executors and Trustees the responsibility of dealing with a deceased's Estate is a once-in-a-lifetime experience. You have to make a number of important decisions in a very short space of time and all when the loss is most difficult to come to terms with.

The position of Executor is an important one in law and has defined personal liability and responsibility. To exhibit due diligence to beneficiaries and more importantly HM Revenue & Customs, an Executor or advisor will instruct a firm Regulated by RICS.

Even if the estate will be taxed at 0%, a valuation remains an essential tool for an Executor. The inventory will still be used for identification of bequests, trust items, family division and proof of value.

Our valuations are prepared to the International Valuation Standards requirement of the 'Red Book'.

The report will cover sections of:

- Jewellery
- Vehicles
- Antiques, Fine Art & Collections
- General Furniture & Effects



For initial advice contact the following Chartered Auctioneers & Valuers:

Bourne, Stamford & South
Colin Young MRICS
01778 422686

Grantham, Lincoln & North
William Gregory MRICS
01522 524984



Removals – Household & Commercial

- Free Quotations
- Full Packing Service
- Suppliers of Packing Materials
- Shipping & Storage Arranged
- Antiques & Fine Art Specialists
- Specialist Piano Movers
- Office Movers

Contact Andrew Lowes on 07970 742577 for a quote
or email lowes@goldingyoung.com

goldingyoung.com

PRIVATE CLIENT & PROFESSIONAL SERVICE DEPARTMENT

We value personal property for private and corporate clients. Our team have valued family heirlooms, art collections and museum holdings for a variety of purposes.

We are the only auction house in the region to have a bespoke Private Client Department with:

- Four Chartered Arts & Antiques Surveyors
- Two RICS/ Antiques Trade Gazette professional assessment award-winning valuers
- Two In-house qualified jewellery valuers
- Experience in abundance and diversity since 1864
- Ten professional staff with RICS, NAVA or SoFAA qualifications.

A YEAR IN *re*VIEW

Over £3 million under the hammer from over 50,000 lots for over 8,000 vendor sale entries in 2019.
We look forward to your support in 2020!



February: SOLD for £1,200



March SOLD for £2,950



April SOLD for £3,600



May SOLD for £18,000



June SOLD for £4,200



July SOLD for £2,800



August SOLD for £1,500



September SOLD for £2,200



October SOLD for £50,000



November SOLD for £2,800



December SOLD for £1,950



January SOLD for £25,000

*pre*VIEW

Bourne

Toy, Transport & Automobilia Sale
Thursday 12th March



Grantham

Fine Ceramics & Asian Art Sale
Thursday 2nd April



Lincolnshire

Monthly Collective Sales
4th/11th/18th March



INFORMATION FOR BUYERS

1. **Introduction:** The following informative notes are intended to assist Buyers, particularly those inexperienced or new to our salerooms. All sales are conducted on our printed 'Conditions of sale' which are readily available for inspection and normally accompany catalogues. Our staff will be happy to help you if there is anything you do not fully understand.
2. **Agency:** As auctioneers we usually contract as agents for the seller whose identity, for reasons of confidentiality, is not normally disclosed. Accordingly, if you buy your primary contract is with the seller.
3. **Estimates:** Estimates are designed to help buyers gauge what sort of sum might be involved for the purchase of a particular lot. The lower estimate may represent the reserve price and certainly will not be below it. Estimates do not include the buyer's premium or VAT (where chargeable). Estimates are prepared some time before the sale and may be altered by announcement before the sale. They are in no sense definitive and are subject to constant revision.
4. **Buyers premium:** The 'Conditions of sale' oblige buyers to pay a buyer's premium at 20% on the hammer price of each lot purchased with a minimum of £2 per lot. In the case of lots purchased 'Live Webcast' through Golding Young Live will be charged at 24% and external internet bidding platforms this will be charged at 28% on the hammer price. In addition, VAT is payable on this premium (see below). To clarify, live webcast auctions are NOT sales governed by Distance Selling Regulations – you were given the opportunity to view, even if you did not.
5. **VAT:** An asterisk (*) indicates that VAT is payable by the purchaser at the standard rate imposed by current UK law on the hammer price as well as being an element in the buyer's premium, lots are noted in the saleroom by a red dot on the lot number. This imposition of VAT is likely to be because the seller is registered for VAT within the European Union and is not operating the Dealers Margin Scheme or because VAT is due on importation into the UK. The double symbol (**) indicates that the lot has been imported from outside the European Union and the present position is that these lots are liable to a reduced rate of VAT on the gross lot price (i.e. both the hammer price and the buyer's premium). Lots which appear without either of the above symbols indicate that no VAT is payable on the hammer price. This is because such lots are sold using the Auctioneers' Margin Scheme and it should be noted that the VAT included within the premium is not recoverable as input tax. (VAT rates are changing with frequency, please check with HMRC. VAT will be charged as set by Government at the time of sale.)
6. **Condition and description of lots.** We are primarily, agents for the seller. We are dependent on information provided by the seller and whilst we may inspect lots and act reasonably in taking a general view about them we are normally unable to carry out a detailed or any examination of lots in order to ascertain their condition in the way in which it would be wise for a buyer to do. Intending buyers have ample opportunity for inspection of goods and, therefore, accept responsibility for inspecting and investigating lots in which they may be interested. Please note carefully the exclusion of liability for the condition of lots contained in the 'Conditions of sale'. Neither the seller nor we, as the auctioneers, accept any responsibility for their condition. In particular, mechanical objects of any age are not guaranteed to be in working order.
However, in so far as we have examined the goods and make a representation about their condition, we shall be liable for any defect which that examination ought to have revealed to the auctioneer but which would not have been revealed to the buyer had the buyer examined the goods. Additionally, in specified circumstances lots misdescribed because they are 'deliberate forgeries' may be returned and repayment made. There is a 21 day time limit from the date of sale, not date of collection or receipt. (The expression 'deliberate forgery' is defined in our 'Conditions of sale').
7. **Electrical goods:** Items are tested by a qualified electrician for SAFETY ONLY. An item that passes the PAT safety test may not work. Conversely, an item that fails the test may work with just minor repair. 'Working Order' and 'Safe' are two completely different concepts. The only thing you may take for granted is that the item will be safe at the point of sale. Items that have failed will have their cabling cut to source, labelled and sold 'For Trade Only'. To use the object you will have to change it radically from what was sold to you. Therefore, the Auctioneers cannot be held responsible after the point of sale. Those items sold genuinely as 'antiques or collectables' will not have been tested and if bought for use must be checked over for compliance with safety regulations by a qualified electrician before use. This is an express condition.
8. **Export of goods:** Buyers intending to export goods should ascertain (a) whether an export licence is required and (b) whether there is any specific prohibition on importing goods of that character because, e.g. they may contain prohibited materials such as ivory. Ask us if you need help.
9. **Bidding in person:** Some form of identification with proof of address will be required if you are unknown to us. Bidders may be required to register before the sale commences and lots will be invoiced to the name and address on the registration form. Account transfers will not be recognised or facilitated under any circumstances.
10. **Absentee bidding:** Commission bids may be left with the auctioneers indicating the maximum amount to be bid excluding buyers' premium. They will be executed as cheaply as possible having regard to the reserve (if any) and competing bids. If two buyers submit identical commission bids, the auctioneers may prefer the first bid received. If there are genuine reasons why you are unable to leave a Commission Bid and you wish to bid by telephone we may accommodate on lots where your opening bid will be £500 or above. There are inherent dangers with this practice; therefore all arrangements shall be entirely at the bidder's risk. Absentee bid instructions must be received by telephone, fax or email 12 hours prior to the sale.
11. **Methods of payment:** Accounts are due for settlement SALEDAY. The following methods of payment are acceptable. There will be NO EXCEPTIONS to this policy. To avoid undue embarrassment for yourself or our staff, please do not ask for preferential treatment.
 - i. **Cash.** Single payments up to ONE THOUSAND GBP only per sale.
 - ii. **Debit Card.** No limit with chip & pin. (Card Not Present limit £500 & no CNP on gold or silver).
 - iii. **Credit Card.** We no longer accept credit cards.
 - iv. **Bank Drafts & Building Society Cheques.** No limit. Due to forgeries, we will retain the goods for 3 working days to establish clearance of funds.
 - v. **Cheques.** Accepted up to the limit of the guarantee card for immediate clearance. For sums exceeding this, and you are not known to the auctioneers, we will retain the goods for 7 working days to establish clearance of funds.
 - vi. **Bank Transfer for Bourne Auctions.** Payments to Golding Young Limited - Auction Clients Account – Bourne. 40-22-19 22034859. HSBC, 88 Westgate, Grantham NG31 6LF. BIC/Swift Code HBUK GB4B. IBAN is GB93HBUK40221922034859
 - vii. **Bank Transfer for Grantham Auctions.** Payments to Golding Young Limited - Auction Clients Account – Grantham. 40-22-19 13666891. HSBC, 88 Westgate, Grantham NG31 6LF. BIC/Swift Code HBUK GB4B. IBAN is GB16HBUK40221913666891.
 - viii. **Bank Transfer for Lincoln Auctions.** Payments to Golding Young Limited - Auction Clients Account - Lincoln. 40-22-19 33667200. HSBC, 88 Westgate, Grantham NG31 6LF. BIC/Swift Code HBUK GB4B. IBAN is GB82HBUK40221933667200.

Bank Transfer payment types, codes and clearance times:
BACS – code BP = cleared funds on the 4th day.
EFT or CHAPS – code CR + ADVICE CONFIRMS = cleared funds after 24hrs.
If early release of goods is requested our staff will ring HSBC to confirm guaranteed cleared funds.
12. **Collection and storage:** Goods can be collected as soon as they are paid for and within two working days following the sale. If goods remain with us and we have no contrary written advice of your intentions the items will be moved to storage and reasonable labour charges levied and storage at the rate of £2+vat per lot per day thereafter for small items (1 person safe carry) and £10+vat per lot per day for furniture and large items (2 person safe carry). This satisfies the requirements of the Consumer Rights Bill (2014).
13. **Late payment penalties:** Auction accounts have always been due Saleday. Any account remaining outstanding after 3 days will have a £20+vat administration charge applied. **We require payment to terms. Payment must be made on time, in full, and without any deduction, set off or counterclaim. In the event that an account is outstanding after 7 days, we will refer the matter to our debt collection agents, Daniels Silverman Limited, which will incur a surcharge of 20% of the debt, plus VAT at the prevailing rate. You agree that you will be legally liable to pay us that surcharge, and that payment of the same can be enforced against you in court. You also agree to pay interest at the relevant reference rate provided for under the Late Payment of Commercial Debts (Interest) Act 1998, which interest is payable both after and before any judgment of the court and continues to accrue.**
14. **Postage & Packaging:** Options for buyers are available at www.goldingyoung.com/buying-shipping or ask a member of staff.

Lots subject to normal VAT rules are marked in the text-only catalogue with a single asterisk character (*) or a single dagger symbol (†) to indicate a VAT added rate of 20%.

Lots subject to normal VAT rules are marked in the text-only catalogue with a single 'at' character (@) to indicate a VAT inclusive rate of 20%.

Lots subject to normal VAT rules are marked in the text-only catalogue with double asterisk characters (**) or a double dagger symbol (‡) to indicate a VAT added rate of 5%.

Lots subject to normal VAT rules are marked in the text-only catalogue with double 'at' characters (@@) to indicate a VAT inclusive rate of 5%.

Lots marked in the text-only catalogue with a bullet character (•) are subject to the Artist's Resale Right Scheme.



The Lincoln Art Sale

Wednesday 26th February 2020

**At The Lincoln Auction Rooms
Viewing & Selling in The Gallery
At Thos Mawer House
Sale commences at 5pm**

Viewing: Sunday 23rd February 2pm-5pm
Tuesday 25th February 10am-4pm
& saleday from 2pm

Bid online or simply watch the sale live at

**GY
- Live!**

goldingyoung.com

All enquiries to William Gregory MRICS on 01522 524984

Front cover images:

Top - Lot 27, 19thC School.

Study of a maiden sleeping, oil on canvas laid on board, 50cm x 60.5cm.

Bottom - Lot 233, David Gersham-Bomberg (1890-1957).

Sketch for Ghetto theatre series, ink, 19.5cm x 25cm.



Lincoln Fine Art Sale

Please note auction starts at 5pm



- ▲ 1.
Jean Jules Geoffroy (1853-1924).
Going to School, oil on canvas, signed, 45cm x 26cm.
Provenance: Christie, Manson and Woods, lot 71, April 3rd 1925, with original catalogue.



- ▲ 3.
Laurence Stephen Lowry (1887-1976).
Market Scene in a Northern Town, artist signed coloured print, 48cm x 62cm.



- ▲ 2.
William Logsdail (1859-1944).
The Gardens of Eastgate House, Lincoln, oil on canvas, signed, 39.5cm x 27cm.
Provenance: Christie, Manson and Woods, lot 173, February 5th 1926, Alfred Shuttleworth Auction, with original catalogue



- ▲ 4.
18th/19th School.
Half length portrait of a gentleman with wig, silk scarf and gold jacket holding a skull, oil on canvas.
£400-600



- ▲ 5.
William Sidney Cooper (1854-1927).
At Langford, Essex, watercolour, signed, dated 1910, titled verso, 35cm x 47cm.
£300-500



▲ 6. **Len Roope (1917-2005).**
Broadgate, Lincoln, watercolour, signed and titled, 22cm, x 28cm.



▲ 7. **Edward Hersey (b.1948).**
An Old Sussex Barn, oil on canvas, signed and titled verso, 44.5cm x 59.5cm.
Label verso AR Whibley and Son, Worthing.



▲ 8. **After Heywood Hardy (1843-1933).**
Awaiting the Call, coloured engraving, 53cm, x 64cm.



▲ 9. **R. S. Austin (19thC).**
Masted Ships at Sea, oil on canvas, signed and dated 1876, 73.5cm x 125cm.
£300-500



▲ 10. **Charles Vyse (1882-1971).**
The Kiss, bronze, 25.5cm H.
£800-1200

11. **19thC British School.**
Mountain landscape with shepherd and gamekeeper, oil on canvas, 63.5cm x 89cm.
£200-400



▲ 12. **William Shayer (1811-1892).**
Cattle watering in river landscape, oil on canvas, 90.4cm x 250.5cm.
£300-500

13. **Thomas Miles II Richardson (1813-1890).**
Mountain lake scene, watercolour, 38cm x 70cm.
£200-300



▲ 14. **Walter Emsley (1860-1938).**
Flowerpale (Flowergate) Whitby, watercolour, signed and titled verso, 52cm x 36cm.
£200-300



▲ 15. **Frank Rousse (act. 1894-1917).**
Whitby fish market, watercolour, signed and dated (18)98, 29.5cm x 44.5cm.
Label verso - Walker Galleries
£200-300

16. **Alfred Powell (1830-1893).**
On the trees at Rokeby, watercolour, signed, dated 1872, titled verso, 24cm x 34cm.
Label verso Chome Fine Art London.
£100-200

17. **19thC Continental School.**
Figures in a market place, oil on canvas, indistinctly signed, 41cm x 52cm.

18. **Thomas George Cooper (1836-1901).**
River landscape with sheep, oil on canvas, signed and dated 1898, label verso, 49cm x 74cm.
£500-800

Lincoln Fine Art Sale



▲ 19.
Thomas George Cooper (1836-1901).
River landscape with cattle, oil on canvas, signed and dated 1898, 49.5cm x 75cm, label verso Thomas Wilson Sheffield.
£500-800

20.
Wylon Gowdy (19th/20thC).
Gun dogs flushing up game, oil on canvas, signed, 39.5cm x 59.5cm.
£100-200



▲ 21.
Claude Cardon (1864-1937).
Calves, piglets, hens and chicks, oil on canvas, signed and dated (18)98, 49.5cm x 75cm.

22.
After Sir Edwin Landseer RA.
Two sheepdogs and a flock in the Highlands, 58cm x 69cm, oil on canvas.
£100-200

23.
19thC Continental School.
Extensive river landscape, oil on canvas, 73cm x 124cm.

24.
19thC Continental School.
Old gentleman pouring a drink, oil on canvas, indistinctly signed, 67.5cm x 49.5cm.

25.
19thC British School.
River landscape with horses and wagon, figure fishing, oil on canvas, 47.5cm x 72.5cm.



▲ 26.
17thC/18thC School.
Head and shoulders portrait of a gentleman wearing a white ruff, oil on canvas, 46cm x 36cm.



▲ 27.
19thC School.
Study of a maiden sleeping, oil on canvas laid on board, 50cm x 60.5cm.

28.
19thC British School.
Half length portrait of a woman in a green dress with lace collar, oil on canvas, 92cm x 71cm.

29.
18thC School.
Half length portrait of a gentleman in gold jacket, lace collar and wig, oil on canvas, 76cm x 63.5cm.



▲ 30.
18thC School.
Half length portrait of a woman wearing a dress with blue ribbon, oil on canvas, 77cm x 63.5cm.

31.
18thC School.
Three quarter portrait of a gentleman in red jacket, gold waistcoat, silk collar and wig, oil on canvas, 126.5cm x 101cm.

32.
19thC British School.
Three quarter portrait of a lady seated wearing a dress with lace trimmings, oil on canvas, 112cm x 85.5cm.



▲ 33.
18thC School.
Half length portrait of a gentleman in green jacket, lace collar and wig, holding a letter, oil on canvas, 103cm x 91cm.



▲ 34.
19thC School.
Head and shoulders portrait of a bearded gentleman, oil on canvas, 47cm x 37cm.



▲ 35.
17thC/18thC School.
Half length portrait of a gentleman wearing a lace collar, 76cm x 64cm.

36.
19thC British School.
Half length portrait of a young gentleman, oil on canvas, 61cm x 51cm.

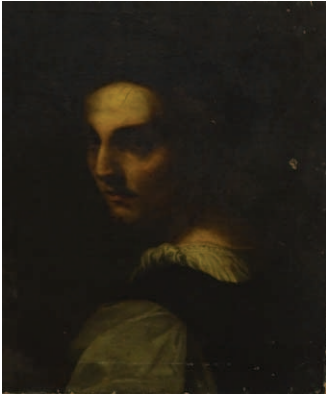
37.
19thC School.
Three quarter portrait of an old lady holding a fan, oil on canvas, 59cm x 42.5cm.

38.
19thC School.
Head and shoulders portrait of a young lady wearing a cameo brooch, oil on canvas, 61cm x 51cm.

39.
19thC British School
Head and shoulders portrait of a young woman in a lace dress, 60.5cm x 50.5cm.



▲ 40.
19thC British School.
Head and shoulders portrait of a gentleman in black jacket, oil on canvas, 60.5cm x 50.5cm.



▲ 41.
18thC/19thC Continental School.

Head and shoulders portrait of a figure looking sideways, oil on canvas, 53cm x 43cm.

42.
19thC School.

Three quarter portrait of a lady in fine costume, oil on canvas, 76.5cm x 50.5cm.

43.
18thC/19thC School.

Half length portrait of a lady reading a book, oil on canvas, 76cm x 46cm.

44.
19thC School.

Portrait of a maiden in costume, oil on canvas laid on board, 50cm x 59.5cm.

45.
19thC School.

Head and shoulders of a lady wearing a bonnet, oil on canvas, 45.5cm x 40.5cm.

46.
After Elisabeth Louise Vigée le Brun.

Artist painting Marie-Antoinette, oil on canvas, 50cm x 40cm.

47.
Spare Lot.

48.
After Joshua Reynolds.

Young child and puppy, oil on canvas, 75cm x 62cm.
£100-200

49.
19thC British School.

Madonna and Child, oil on canvas, 76cm x 63cm.

50.
Kolosziary? (19thC/20thC).

Children stringing beads, oil on canvas, signed, 99cm x 72cm.

51.
Julius Geertz (1837-1902).
The Sour Lemon, oil on canvas, signed and dated 1865, 71cm x 63cm.
£200-300



▲ 52.
19thC School.
Madonna, oil, 28cm x 22cm.

53.
A. Schath.
Continental coastal scene with masted ships and figures, oil on canvas, signed, 25.5cm x 58cm.

54.
H. Walter.
Coastal scene with fishing boats and figures, oil, signed, 17.5cm x 39cm.

55.
19thC British School.
Head and shoulders portrait of a young woman wearing a hat, oil on board, 11.5cm x 8.5cm.

56.
18thC/19thC British School.
Maiden with basket of flowers, oil on canvas, 24.5cm x 32cm.

57.
19thC School.
Study of an old couple at the table, oil on canvas, 19cm x 39cm.



▲ 58.
19thC Scottish School.
Portrait, sisters, oil on canvas, 91cm x 70.5cm.
£500-800



▲ 59.
19thC Continental School.
Portrait of Mme Coerine Dessierich de Ses 3 filles, pastel, titled verso, 47cm x 60cm.
£250-450

60.
Thomas Sidney Cooper.
Views near Rochester, oil on canvas - pair, oil on canvas, signed and titled verso, 29.5cm x 39.5cm.
£2000-3000



▲ 61.
18thC School.
Classical landscape with ruins and figures, oil on canvas, 70cm x 107.5cm.



▲ 62.
After Turner.
River scene with sailing boats and figures, oil on canvas, 91cm x 123cm.

63.
18thC School.
Classical landscape with shepherd, family and animals, oil on canvas, 53.5cm x 66cm.



▲ 64.
18thC Continental School.
Figures outside cottages, oil on panel - pair, 45cm x 59cm.



65.
F.M. (19thC).
Rocky coastal scene with sailing boats and figures, oil on canvas, initialled, 59.5cm x 93cm.

66.
Agnew (19thC/20thC).
Still life with ornaments, oil on canvas, signed, 37cm x 34cm.

67.
18thC Continental School.
Classical landscape with pan and maiden, oil on canvas, 71cm x 86cm.



▲ 68.
18thC/19thC School.
Landscape with shepherd and sheep in the foreground, oil on canvas, 51cm x 61cm.

69.
19thC School.
Coastal landscape with figures, oil on canvas, dated 1832, 58cm x 81cm.

Lincoln Fine Art Sale



▲ 70.
18thC/19thC School.
Madonna with maiden looked over by Saint Jerome, oil on canvas, 77cm x 67cm.

71.
18thC/19thC School.
Christ nailed to the cross, oil on canvas, 75cm x 49cm.



▲ 72.
18thC/19thC School.
Maiden with putti in classical garden, oil on canvas, 60cm x 76cm.

73.
18thC/19thC School.
Christ with maidens and cherubs in classical landscape, oil on canvas, 56cm x 83cm.

74.
18thC/19thC School.
Christ with disciples, oil on canvas, 86cm x 79cm.

75.
18thC/19thC School.
Christ with Madonna, oil on canvas, 82cm x 100cm.



▲ 77.
George Armfield (1808-1893).
Terriers, oil on canvas - pair, signed, 29cm x 39cm
£1000-1500



▲ 76.
18thC/19thC School.
Adam and Eve, oil on canvas, 183cm x 112cm.

78.
G. Moore (19thC/20thC).
Maiden standing on a bridge, oil on board, signed, 44cm x 34cm.



▲ 79.
Harden Sidney Melville (1824-1894).
Working horses in rural scenes, oil on canvas - pair, signed, 29cm x 44.5cm.
£250-350

80.
B. Smith (19thC).
Cow, sheep and goat in rural landscape, oil on panel, signed and dated 1848 verso, 28.5cm x 44cm.
£100-200

81.
George Armfield (1808-1893).
Terriers and mouse, oil on canvas - pair, signed, 29.5cm x 39.5cm.
£1500-2000

82.
F. Welk (?) (19thC).
Cottages in landscapes, oil on canvas, pair, indistinctly signed, 30cm x 56.5cm.
£100-200

83.
Dorothy Day (19th/20thC).
Floral still life, oil on canvas, signed, 48.5cm x 39.5cm.

84.
19thC School.
Jockey on horseback, oil on canvas, 50cm x 64cm.



▲ 85.
Lily Brown (19thC/20thC).
Dark bay horse in stable, oil on canvas, signed, 46cm x 66.5cm.

86.
19thC British School.
Shetland horse with spaniels, oil on canvas, 46cm x 61.5cm.

87.
18thC British School.
Farmyard scene with figures and animals, oil on canvas laid on board, 73cm x 106.5cm.

88.
E. Chadin(?) (19thC).
Game still life, oil on canvas, indistinctly signed, 68.5cm x 42.5cm, and another Rams head (2).

89.
19thC/19th Continental School.
Extensive landscape with waterfall, oil on canvas, 62cm x 86.5cm.



▲ 90.
18thC/19thC School.
The Rent Collector, oil on canvas, 62cm x 49.5cm.

91.
18thC/19thC School.
Figures by river landscape, oil on canvas, 79cm x 106.5cm.



▲ 92.
18thC/19thC School.
Masted ships in harbour scene,
oil on canvas, 35.5cm x 53.5cm.

93.
18thC/19thC School.
Cattle watering, oil on board,
37.5cm x 58.5cm.



▲ 94.
William Henry Cooper (1858-?).
River landscape with horse
and rider, oil on canvas,
signed, 29cm x 54.5cm.
£300-500



▲ 95.
Henry Deacon Hillier-Parker (1858-1930).
Sunset landscape, oil on
canvas, signed and dated 1897,
39cm x 59.5cm.
£250-350

96.
Colin Campbell Cooper (1856-1937).
Landscape with Belvoir Castle(?),
watercolour, signed and dated
1875, 43cm x 65cm.

97.
Settimio Giampietri (1842-1924).
Italian children by ruins,
Rimanenza Latine, watercolour,
signed, inscribed and dated 1894,
50.5cm x 33.5cm.
£200-300

98.
Joshua Renshaw (act. 1886-1894).
Barden Bridge, Warkdale York,
watercolour, signed and titled
verso, 27.5cm x 38cm.

99.
Ebenezer Wake Cook (1843-1926).
Coastal scene, watercolour,
32.5cm x 47cm.
£100-200

100.
Walter Norfolk (19thC/20thC).
Shepherd with sheep on
woodland path, oil on canvas -
pair, signed, 60cm x 39.5cm.

101.
Hermanus II Koekkoek (1836-1909).
On a Dutch land, Dootzyl
Holland, watercolour - pair,
signed J. van Conver, titled verso,
52cm x 35cm.
Label verso A.R. Whibley and Son
Worthing.

102.
19thC British School.
Boynton Church nr Bridlington,
oil on canvas, inscribed verso,
31cm x 42.5cm.
£200-300

103.
George Hodgson (1847-1921).
Cottages at Jersey, oil on canvas,
signed and titled verso,
52.5cm x 34.5cm
Label verso W. Frank Gadsby,
Leicester.

104.
S.T. (19thC).
Church interior, watercolour,
monogrammed, 25cm x 17.5cm.



▲ 105.
William Edward Millner (1849-1895).
Rustic Toilet, oil on canvas,
titled on mount, 60cm x 50cm.
£300-500

106.
V. Mathias (19thC/20thC).
Canal Venice, oil on board, signed
and titled verso, 30cm x 22cm.



▲ 107.
Henry Farrer (1843-1903).
Woodland river scene, oil on board, signed, 12cm x 35cm.
£2000-3000

108.
E.C. Hamblin (19thC/20thC).
Rural landscape with shepherd
and sheep, oil on canvas, signed,
29.6cm x 59.5cm.
£500-800

109.
Alicia Kendrick (19thC/20thC).
The Late Old Dromore Mallow Co
Corn. watercolour, inscribed
verso, 31cm x 49cm.
£50-80

110.
Phillip Wilson Steer (19thC/20thC).
Lady in costume reading, seated
on garden bench, oil on canvas,
monogrammed and dated (19)07,
24.5cm x 37.5cm.

111.
Ellen Vernon (19thC).
Sheep on a moorland path,
watercolour, signed, 27cm x 38cm.

112.
Stephen J. Bowers (atc.1874-1892).
Country landscape with figures,
watercolour, signed and dated
1883, 35cm x 51.5cm.



▲ 115.
John Linnell (1792-1892).
A wooded evening landscape, a drover herding a flock of sheep
along a lane towards the viewer, trees to the left, a church partly
hidden behind trees to the right, signed lower right, oil on canvas,
67cm x 86.5cm.
£1500-1800

113.
Edward Davies (1841-1920).
River landscape with watermill,
watercolour, signed, 36cm x 53cm.



▲ 114.
Fred Hines (act.1875-1928).
River scenes with maiden and
child, watercolour - pair,
signed, 27cm x 37cm.

Lincoln Fine Art Sale

116.
Cunningham Bridgeman
(19thC/20thC).
Autumn tints in the Llear Valley,
N. Wales, watercolour, signed,
15cm x 21.5cm.
£50-80

117.
19thC British School.
Lady buying lace, watercolour,
23cm x 18.5cm.

118.
19thC British School.
Marine Parade, Brightheltonstone,
watercolour, titled and dated
1806, 11cm x 20.5cm and two
others Brighton 1835, Great
Entrance Windsor Castle (3).

119.
Philip Connard (1875-1958).
Masted ship in harbour,
watercolour, titled on the mount,
19.5cm x 30cm and another signed
Martin Hardie (1875-1952) (2).

120.
John Frederick Lewis (?).
Study of a gentleman, drawing,
20cm x 15.5cm and other 19thC
and later watercolours, drawings
and prints (15).



▲ **121.**
18thC/19thC School.
Extensive landscape with
steam railway engine,
watercolour, 21cm x 41cm.

122.
18thC/19thC School.
Grand house gardens with
figures, watercolour,
22cm x 36.5cm.
Label verso Thos. Agnew & Sons Ltd.
London

123.
19thC School.
Chapel and grounds, watercolour,
17.5cm x 21cm.

124.
Elizabeth Lumsden
(act. 1830).
Belem Castle, Lisbon, watercolour,
titled verso, 12.5cm x 17cm.
Label verso Mount Gallery London

125.
19thC British School.
Portrait of a gentleman, oil on
copper, 20.5cm x 17.5cm.

126.
19thC British School.
Portrait of a gentleman, oil on
panel, 18cm x 15cm.

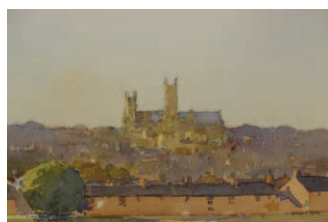
127.
18thC/19thC School.
Portrait of a gentleman in hat and
cloak, oil on panel, 17.5cm x 12.5cm.

128.
18thC/19thC School.
Portrait of a lady in ruff collar, oil
on metal, 11cm x 9cm and another
(2).



▲ **129.**
19thC School.
Portrait of a gentleman, oil on
board, 18.5cm x 15cm and
another seated lady (2).

130.
19thC British School.
Portrait of a lady holding a
basket, oil on metal, 19cm x 22cm
and another (2).



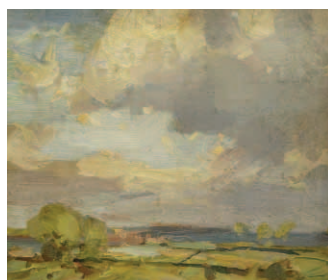
▲ **131.**
Len Roope (1917-2005).
Lincoln from the South,
watercolour, signed, titled and
dated 1975, 13.5cm x 19.5cm.

132.
Len Roope (1917-2005).
Lincoln from the North East,
watercolour, signed, titled and
dated 1975, 19.5cm x 31.5cm.

133.
Len Roope (1917-2005).
Exchequer Gate, Lincoln,
watercolour, signed and titled,
18.5cm x 24cm.

134.
Len Roope (1917-2005).
Vale of Lorton, morning,
watercolour, signed and titled,
16.5cm x 24.5cm, and another
Brayford Lincoln (2).

135.
Len Roope (1917-2005).
Skiddaw from North West,
watercolour, signed and titled,
21cm x 31cm.



▲ **136.**
Herbert Rollett
(1872-1932).
Landscape (reverse trees), oil
on board, 21cm x 25cm.
With Smith Allen, Herbert
Rollett, Lincolnshire grocer to
acclaimed artist.
£150-250

137.
Herbert Rollett (1872-1932).
Landscape through trees, oil on
board, 25.5cm x 20.5cm.
£100-200

138.
Herbert Rollett (1872-1932).
Landscape, oil on board,
16.5cm x 22.5cm.
£100-200

139.
Herbert Rollett (1872-1932).
Trees and river, oil on board,
29.5cm x 24.5cm
£60-80



▲ **140.**
William Bartol Thomas
(1877-1947).
Fishing boat, watercolour,
signed verso, 32.5cm x 27.5cm.
£100-200

141.
John Berney Ladbrooke
(1803-1879).
Lincoln, pencil drawing, signed
and titled, 42cm x 31.5cm.
£50-80

142.
19thC/20thC British School.
Riverside, Lincoln, watercolour,
titled on mount, 16.5cm x 17cm.



▲ **143.**
Colin Carr (1929-2002).
Grimsby dock tower,
watercolour, signed and dated
(19)97, 27cm x 18cm.
£40-60

144.
Colin Carr (1929-2002).
Waltham Mill, artist signed
coloured print dated (19)82,
24.6cm x 16.5cm, and five coloured
prints (6).

145.
Karl Wood (1888-1958).
Paxton St. Saviour, watercolour,
titled verso, 25cm x 16.5cm, and
eight other Lincolnshire related
pictures (9).



▲ 146.
Thomas George Storey (1865-1935).
Landscape with church, oil on canvas, signed, 19cm x 29cm.
£50-80

147.
19thC British School.
Lincoln from the Brayford, watercolour, indistinctly signed, 17cm x 34cm.

148.
19thC British School.
The Glory Hole, Lincoln, watercolour, inscribed verso, 25cm x 17.5cm.

149.
A.E. Dobdinson (19thC/20thC).
The Glory Hole, The Minster, watercolour - pair, signed and titled, 15.5cm x 11cm.

150.
David Paton (20thC).
Harlech Castle, photographic print, signed, 14cm x 19cm.

151.
J. Ashforth (19thC/20thC).
Newport Arch, watercolour, signed and dated 1907, 15cm x 21cm.

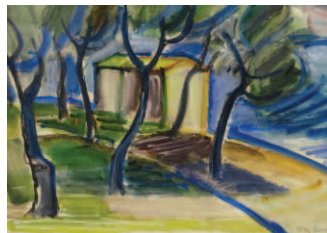


▲ 152.
Vincent Haddelsey (1934-2010).
Horse and carriage, artist signed limited edition coloured print 41/100, 22cm x 31cm.

152A.
Alfred George Webster (?-1894).
Boston Stump, watercolour, signed, 22.5cm x 13.5cm.
£50-80



▲ 153.
Antonin (Tony) Bartl (1912-1998).
Jocelyn, oil on canvas, signed and dated 1985, 94.5cm x 65.5cm.



▲ 154.
Antonin (Tony) Bartl (1912-1998).
Landscape with trees, watercolour, signed, 30.5cm x 40.5cm.

155.
Robin Wheeldon (b.1945).
Denis Law, pastel, signed and dated 1977, 43cm x 36.5cm.

156.
Robin Wheeldon (b.1945).
Keith Fletcher, pastel, signed, titled and dated (19)91, 43cm x 31cm.
£60-80

157.
Robin Wheeldon (b.1945).
Andy Roberts, pastel, signed, titled and dated (19)91, 43cm x 31cm.
£60-80

158.
Alf Ludlam (1941-2018).
Life room art department - Nuns Corner, drawing, signed, titled and dated 1976 verso, 74cm x 48cm.



▲ 159.
Alf Ludlam (1941-2018).
Chloe Boughton-Leigh, oil on board, signed, titled and dated (2)008 verso, 59.5cm x 37cm.

160.
Alf Ludlam (1941-2018).
Female nude in front of a pink and grey wall, oil on board, signed, titled and dated (19)76 verso, 38.5cm x 28cm.



▲ 161.
Alf Ludlam (1941-2018).
Portrait of a young lady, oil on board, signed, titled and dated (19)86, 28.5cm x 19cm.
Label verso Franklin Trust.

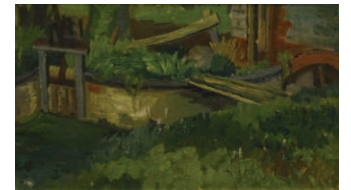
162.
Alf Ludlam (1941-2018).
Angela, I, II, III, pencil drawing - three, signed and titled verso, 26cm x 17cm.

163.
Kathleen Tyson.
A trout stream in Wiltshire, oil on canvas, signed, 62cm x 75cm.
Artist's label verso.

164.
David Weston.
Fairy Glen - The Princess, oil on canvas, signed, dated (19)94, titled verso, 59.5cm x 90cm.
£80-120



▲ 165.
Anna Katrina Zinkeisen (1901-1970).
Lincoln, coloured lithographic print, 74.5cm x 100.5cm.
£80-120



▲ 166.
Noel Rowston Brannan (1921-2001).
Water Mill, Kirby Green, oil on board, 24cm x 40.5cm.
Label verso Lincolnshire and South Humberside Artists Society.

167.
Noel Rowston Brannan (1921-2001).
Industrial landscape, oil on board, 37cm x 61cm.
Label verso W. Frank Gadsby, Lincoln.

168.
Noel Rowston Brannan (1921-2001).
Garden scene, oil on board, dated November 1995 verso, 44cm x 49.5cm.



▲ 169.
Noel Rowston Brannan (1921-2001).
Bagworth 2, oil on board, titled verso, 40cm x 60.5cm.

Lincoln Fine Art Sale

**170.
Noel Rowston Brannan
(1921-2001).**

Desford Evening, oil on board,
titled verso, 34cm x 42.5cm.

**171.
Noel Rowston Brannan
(1921-2001).**

Cliffe Hill Quarry, oil on board,
27.5cm x 44cm.
*Label verso Lincolnshire and South
Humberside Artists Society.*



▲ **172.
Noel Rowston Brannan
(1921-2001).**

Industrial scene, oil on board,
titled verso, 30.5cm x 46cm.

**173.
Noel Rowston Brannan
(1921-2001).**

Leicestershire farmhouse, oil on
board, titled verso,
50.5cm x 40.5cm.

**174.
Noel Rowston Brannan
(1921-2001).**

Nailstone Scrapheap One, oil on
board, titled verso, 40cm x 59.5cm.
*Label verso Lincolnshire and South
Humberside Artists Society.*

**175.
Noel Rowston Brannan
(1921-2001).**

Industrial landscape, oil on board,
40cm x 60cm.

**176.
Noel Rowston Brannan
(1921-2001).**

Churchyard, watercolour,
26.5cm x 36.5cm.

**177.
Noel Rowston Brannan
(1921-2001).**

Industrial yard, felt pen, signed,
27cm x 36.5cm.

**178.
Noel Rowston Brannan
(1921-2001).**

Industrial scene, felt pen, signed,
17cm x 27cm.

**179.
Noel Rowston Brannan
(1921-2001).**

Fallen post, felt pen, signed and
dated 1985, 27cm x 36.5cm.

**180.
Noel Rowston Brannan
(1921-2001).**

Landscape, felt pen, signed and
dated 1982, 42cm x 61cm.
Artist label verso.

**181.
Noel Rowston Brannan
(1921-2001).**

Barbage Woods, watercolour,
signed, dated 1984, titled verso,
26.5cm x 36.5cm.
Artist label verso.



▲ **182.
Noel Rowston Brannan
(1921-2001).**

Lincolnshire landscape,
watercolour, signed and dated
1947, titled verso, 30cm x 34cm.
Artist label verso.

**183.
Noel Rowston Brannan
(1921-2001).**

Barbage woods, watercolour,
signed, dated 1985, titled verso,
35cm x 54cm.
Artist label verso.

**184.
Noel Rowston Brannan
(1921-2001).**

Farmhouse, felt pen, signed and
dated 1959, 26.5cm x 37cm.

**185.
Noel Rowston Brannan
(1921-2001).**

Landscape with trailer, oil on
board, 33cm x 39cm, and another
railings and crane (2).



▲ **186.
Noel Rowston Brannan
(1921-2001).**

Portrait, oil on board,
41cm x 30.5cm, another and
various photographs.

**187.
Noel Rowston Brannan
(1921-2001).**

Farmstead track with trees, oil on
board, 38cm x 43.5cm, and four
others (5).

**188.
Noel Rowston Brannan
(1921-2001).**

Abstract, oil on board,
19cm x 23cm, and two others (3).

**189.
Noel Rowston Brannan
(1921-2001).**

Still life with ripe bananas, oil on
canvas, signed, dated (19)47, titled
verso, 40cm x 51cm.
Artist label verso.

**190.
Noel Rowston Brannan
(1921-2001).**

Still life with onions, oil on
canvas, 51cm x 61cm.



▲ **191.
Noel Rowston Brannan
(1921-2001).**

Community bus, oil on canvas,
titled verso, 61cm x 63cm

**192.
Noel Rowston Brannan
(1921-2001).**

Standing corn, oil on canvas,
signed and dated 1951, titled
verso, 51cm x 61cm.

**193.
Noel Rowston Brannan
(1921-2001).**

Head and shoulders portrait, oil
on canvas, 61cm x 51.5cm.

**194.
Noel Rowston Brannan
(1921-2001).**

Nude study, oil on canvas,
40.5cm x 30cm.

**195.
Noel Rowston Brannan
(1921-2001).**

Studio works (titled 1940-1947),
contents of album, approx
35 works.

**196.
Noel Rowston Brannan
(1921-2001).**

Studio works (titled post 1947),
contents of album, approx
84 works.

**197.
Noel Rowston Brannan
(1921-2001).**

Studio works (titled 1946 mainly
Bath), contents of album, approx
20 works.

**198.
Noel Rowston Brannan
(1921-2001).**

Studio works (titled Lincolnshire
1942-1945), contents of album,
approx 65 works.

**199.
Noel Rowston Brannan
(1921-2001).**

Studio works (titled Drawings
Post 1952), contents of album,
approx 25 works.

**200.
Noel Rowston Brannan
(1921-2001).**

Studio works (titled student
works), contents of album, approx
62 works.

**201.
Noel Rowston Brannan
(1921-2001).**

Studio works (titled 1490-1587),
contents of album, approx
27 works.



- ▲ 202.
Edward Eaton Brannan (1886-1957).
Lincolnshire fields, watercolour, signed and titled verso, 24cm x 30cm.

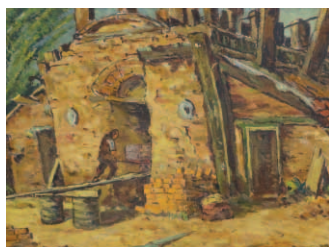
203.
Edward Eaton Brannan (1886-1957).
Tree study, Lincolnshire, watercolour, titled verso, 19cm x 26.5cm.

204.
Edward Eaton Brannan (1886-1957).
Harvest time in Lincolnshire, watercolour, signed and titled verso, 29cm x 34cm.

205.
Edward Eaton Brannan (1886-1957).
Lincolnshire landscape, watercolour, titled verso, 23.5cm x 26cm.

206.
Edward Eaton Brannan (1886-1957).
Country lane landscape, watercolour, signed, 29.5cm x 34cm.

207.
Edward Eaton Brannan (1886-1957).
Trencrom, Cornwall, oil on canvas, signed and titled verso, 49.5cm x 59.5cm.



- ▲ 208.
Edward Eaton Brannan (1886-1957).
Brick kiln, oil on canvas, signed, 51cm x 61cm.

209.
Edward Eaton Brannan (1886-1957).
Growing Wheat, oil on board, signed and titled verso, 44cm x 58.5cm.
Label verso New English Art Club.

210.
Edward Eaton Brannan (1886-1957).
Woodland landscape, oil on canvas, 50cm x 61cm, plus two others (3).



- ▲ 211.
Edward Eaton Brannan (1886-1957).
Study of a woman, oil on canvas, 61cm x 51cm, plus two others (3).

212.
Edward Eaton Brannan (1886-1957).
Studio works (titled Brown Book), content of album, approx 12 works.

213.
Edward Eaton Brannan (1886-1957).
Studio works (titled Brown Book 2), contents of album, approx 32 works.

214.
Edward Eaton Brannan (1886-1957).
Studio works (titled Drawings 185201918), contents of album, approx 47 works.

215.
Edward Eaton Brannan (1886-1957).
Studio works (titled Vintage), contents of album, approx 10 works.

216.
Edward Eaton Brannan (1886-1957).
Studio works (titled EEB 3 folio), contents of album, approx 13 works.

217.
Edward Eaton Brannan (1886-1957).
Studio works (titled EEB - folio 2), contents of album, approx 20 works.

218.
Edward Eaton Brannan (1886-1957).
Studio works (titled EEB folio 4), contents of album, approx 9 works.

219.
Edward Eaton Brannan (1886-1957).
Studio works (titled EEB folio 1), contents of album, approx 30 works.

220.
Edward Eaton Brannan (1886-1957).
Studio works (titled EEB drawings), contents of album, approx 43 works.

221.
Edward Eaton Brannan (1886-1957).
Studio works (titled M folio), contents of album, approx 9 works.

222.
Edward Eaton Brannan (1886-1957).
Studio works (titled EEB Ω imperial), contents of album, approx 14 works.

223.
Edward Eaton Brannan (1886-1957).
Studio works (titled EEB prints - Ω Imperial), contents of album, approx 47 works.

224.
Peter Brannan (1926-1994).
Artist sketch book, dated circa 1958, address 1 Mount Lane, Newark, Notts and two others (3).

225.
Peter Brannan (1926-1994).
Artist sketch book. dated circa 1949 and another - address Thornton 103, Highgate, Cleethorpes, Lincs. (2).



- ▲ 226.
Peter Brannan (1926-1994).
Artist sketch book, signed and dated 1989 and another (2).

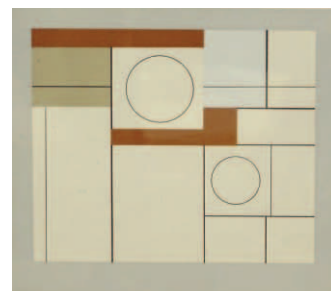
227.
Peter Brannan (1926-1994).
Life study drawings, signed and dated 1950, plus others - prints and etchings, approx 47 items.

228.
Brannan Archive.
E.E. Brannan exhibition catalogue, The Usher Art Gallery, Lincoln 1948, Goldmark Retrospective catalogues, Theatre Royal, Lincoln Programmes with annotations (11).

229.
Brannan Archive.
Etchings and prints - various hands, including W.W. Ward, contents of Album - approx 21 items.



- ▲ 230.
Eena Plachte (1893-1986).
Portrait study, drawing, studio stamp, 9cm x 24cm, and another. *Provenance: Brannan Archive.*



- ▲ 231.
Benjamin Lander Nicholson (1894-1982).
Abstract, coloured print, with hand written dedication to Mr and Mrs Hepworth from Ben Nicholson, 25cm x 18cm. *Provenance: Brannan Archive.*

Lincoln Fine Art Sale



▲ 232.
David Gershman-Bomberg (1890-1957).
Figures on staircase/study drawing (on reverse), ink, signed and dated (19)19, 25cm x 19.5cm.
Provenance: purchased from the Artist's wife.
£1200-1800



▲ 233.
David Gershman-Bomberg (1890-1957).
Sketch for Ghetto theatre series, ink, 19.5cm x 25cm.
Provenance: purchased from the Artist's wife.
£600-800



▲ 234.
Kyffin Williams (1918-2006).
Farmers with sheep dogs, watercolour, initialled, 19cm x 24cm.



▲ 235.
Laurence Stephen Lowry (1887-1976).
Fever Van, artist signed coloured print, 45cm x 53.5cm.
£1500-2500



▲ 236.
Laurence Stephen Lowry (1887-1976).
The Pond, artist signed coloured print, 46cm x 58cm.
£1500-2500

238.
After Laurence Stephen Lowry (1887-1976).
Going to work, limited edition coloured print 481/850, 46cm x 61cm.

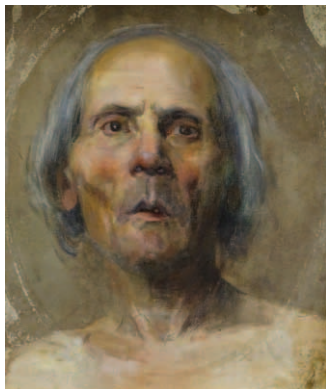


▲ 240.
Henry Moore.
Off Seashore in a Gale, pencil, signed and titled, also signed on mount Yours truly, 12.5cm x 17cm, with another picture - Phillip Wilson-Steer (2).

239.
20thC British School.
Figure by a lamp post, pencil, signed L.S. Lowry and dated 1965, 15.5cm x 5.5cm.



- ▲ 237.
Laurence Stephen Lowry (1887-1976).
Britain at Play, artist signed coloured print, 49cm x 62cm.
£1500-2500



- ▲ 241.
20thC School.
Portrait study of a man, oil on canvas laid on board, 38.5cm x 32cm.



- ▲ 242.
Richard Ranft.
Study of two young women, pastel drawing, signed, 13cm x 21cm.
£400-600

243.
Simon Coleman.
Figure sleeping, watercolour drawing, signed, 22.5cm x 15.5cm.
£400-600

244.
Graham Carter (20thC).
The Young Spartans, watercolour, signed and titled verso, 17.5cm x 26.5cm.

245.
Giulio Falzoni (1900-1978).
Porto Capuna, Napoli, watercolour, signed and titled verso, 33cm x 49cm.
£250-350

246.
Emil Feisinal?.
Beach scene with figures, oil on canvas, signed, 19cm x 58.5cm.
£40-60

247.
Reg Herle.
Sailing boats, oil on board, signed, 44cm x 81cm.

248.
Vic Ellis.
The river Thames in trading days, oil on canvas, signed, 34cm x 59.5cm.
With Artist's Certificate of Authenticity.

250.
Clive Madgwick (20thC).
Piazza St, Croce, Florence, oil on canvas, signed and titled verso, 29cm x 39cm.
Label verso, Francis Iles Fine Paintings, Kent.
£300-500



- ▲ 249.
Antoine Blanchard (1910-1988).
The Horse Bus, oil on canvas, signed, 32cm x 44.5cm.
Provenance: E. Stacey Marks, Eastbourne.
£1800-2200



- ▲ 251.
Charles A. Browning (20thC).
Still life, oil on canvas, signed, 39cm x 49.5cm.
Artist label verso.
£100-150

252.
Edward Hersey (b.1948).
The Old Farmhouse, oil on canvas, signed and titled verso, 44.5cm x 59.5cm.
Label verso - A.R. Whibley and Son, Worthing.



- ▲ 253.
Stephen Park (b.1953).
Calf, turkey, lamb and chickens, oil on canvas, signed, 49.5cm x 59.5cm.
£150-250

254.
Prudence Turner (1930-2007).
Highland river scene, oil on canvas, signed.
£100-200



- ▲ 255.
H. E. Stephens (19thC/20thC).
British Frigate at Sea, HMS Dreadnought, oil on canvas, signed and dated 1907, 49cm x 75cm.
£150-250



- ▲ 256.
G. Arnold (19thC/20thC).
GT - Northern fleet Shifting Grounds North Sea Admiral Ship Epworth, watercolour, signed, titled and dated 1903, 50cm x 72.5cm.

257.
G. Arnold (19thC/20thC).
St. Epworth with the fleet Dogger Bank, watercolour, signed, titled and dated 192, 50cm x 72cm.

258.
Peter Whittock (20thC).
Quiet Sunday Princes Dock, Hull 1881, watercolour signed and titled, 31cm x 50cm.
Label verso, The Mall Galleries

Lincoln Fine Art Sale



- ▲ **259.**
Peter Whittock (20thC).
Huntress off Dodman Point, watercolour, signed and titled, 30cm x 51cm.
Artist label verso - dated 1996.

- 260.**
Peter Whittock (20thC).
Off the coast of Kent, watercolour, signed and titled, 30cm x 51cm
Label verso The Mall Galleries.

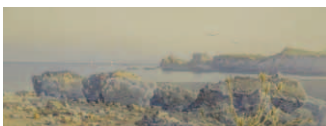
- 261.**
Peter Whittock (20thC).
Tranquility, watercolour, signed, titled and dated (19)96, 30cm x 51cm
Label verso The Mall Galleries.

- 262.**
Peter Whittock (20thC).
Off Brixham, weather changing, watercolour, signed, titled and dated (19)91, 15cm x 31cm and another Coastal traffic (2).

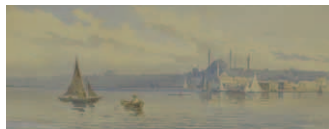
- 263.**
Peter Whittock (20thC).
Baltic trade - Neptunus, watercolour, signed and titled, 15cm x 30.5cm, and another - Off the Needles (2).

- 264.**
Peter Whittock (20thC).
Busy waters off Berryhead, oil on canvas, signed and titled verso, 39cm x 75cm.

- 265.**
David C. Bell (b.1950).
Masted ships at sea, watercolour, signed, 32.5cm x 50.5cm.



- ▲ **266.**
Frederick Lord Leighton (1830-1896).
Constantinople, watercolour, signed and dated 1891, 20.5cm x 48.5cm.



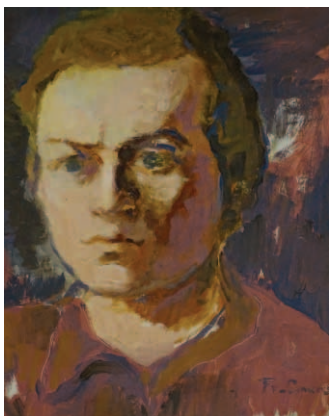
- ▲ **267.**
Frederick Lord Leighton (1830-1896).
Coastal scene with sailing boats, watercolour, signed and dated 1891, 20.5cm x 48.5cm.

- 268.**
John Harold Bruce Lockhart (1889-1956).
River Mill, watercolour, signed and dated 1948, 32cm x 50cm.

- 269.**
Kate Dorbin (1868-1955).
Country Lane, watercolour, signed, 26cm x 27.5cm, and another continental church (2).

- 270.**
K.S. (19thC/20thC).
Landscape with church spire in the distance, oil on canvas, initialled, 24.5cm x 60cm.

- 271.**
C.L. Adamson (19thC/20thC).
Heathfield Park, Sussex, Midsummer 1934, watercolour, signed, dated 1934 and titled on mount, 35cm x 54cm.



- ▲ **272.**
Frans Smeers (1873-1960).
Head and shoulders portrait, oil on board, signed, 39.5cm x 31cm.

- 273.**
Robert Henry Alison Ross (act.1898-194).
Advocats Close Edinburgh, oil on canvas, signed, 58cm x 35cm.

- 274.**
Flores Cadiz(?) (19thC/20thC).
Portrait studies, oil on board - pair, indistinctly signed and dated 1910, 26cm x 14.5cm.

- 275.**
Flores Cadiz (?) (19thC/20thC).
Portrait studies, oil on board - pair, indistinctly signed and dated 1910, 26cm x 14.5cm.

- 276.**
Andrew P. Neilson (1920-2004).
Overgate, watercolour, signed, 27cm x 37cm.

- 277.**
Winefred Cadwallader (19thC/20thC).
Tower Bridge, watercolour, signed, titled and dated Oct 1903, 25.5cm x 37cm.

- 278.**
Edmund Gilling Hallewell (1822-1869).
Watermill, watercolour, signed and dated 1869, 22cm x 30cm, and another indistinctly signed (2).

- 279.**
19thC British School.
Terriers, oil on board, 18cm x 22cm, and another Child with rocking horse (2).

- 280.**
William Thurston Tropham (1888-1966).
Autumn, Lac Long, STE, AGATHE, oil on board, signed and titled verso, 29cm x 39.5cm.
Label verso Wallack's Art Shop, Ottawa.

- 281.**
Elia Joeza (b.1932).
Floral still life, oil on canvas, signed, 60cm x 49.5cm.

- 282.**
Joseph Edward Homerville Hague (19thC/20thC).
Town Parade, oil on board, 39.5cm x 32cm.
£200-300

- 283.**
J.B.W. (19thC/20thC).
Country landscape with farmhouse and haystacks, oil on canvas, initialled, 59cm x 100.5cm.

- 284.**
Pablo Martinado (1856-1937).
Continental market scene, watercolour, signed, 42cm x 31.5cm.



- ▲ **285.**
Ena Limebeek (1898-1984).
Freda Swain, oil on canvas, initialled and titled verso, 50cm x 49.5cm.
Label verso - Paris Salon

- 286.**
Ena Limebeek (1898-1984).
Portrait of a lady, oil on canvas, initialled, 74cm x 62cm.
Label verso - Paris salon

- 287.**
J Bera (?) (20thC).
Classical floral still life, oil on panel, signed, 90cm x 70cm.

- 288.**
Ercole Magretti (1890-1967).
Lake landscape, figure in a boat, oil on canvas, signed, 48cm x 67cm.
£150-250

- 289.**
Eustace Liscard (20thC).
Blossoms in a Chinese vase, oil on board, signed, 49cm x 39cm.

- 290.**
T. Colis (?) (19thC/20thC).
Later afternoon on the Welsh border, oil on canvas, signed, 75cm x 126cm.

- 291.**
Johannes Schelfman (1903-?).
Ducklings on the river bank, oil on board, signed, 18cm x 23cm.
£80-120

- 292.**
Wyksham.
I couldn't see her but I think she was there!!!, watercolour, signed, titled and dated 1896, 25cm x 21cm.

- 293.**
19thC School.
Portrait of a woman, over painted photographic print, 63cm x 51cm.



- ▲ 294.
Michael O'Rorke (1895-1981).
Landscape in the Masai Mara, Kenya, with Masai tribal figures and their cattle, oil on canvas and dated 1963, 44cm x 72cm, with book Brian O'Rorke - Policeman Artist.
£150-200

295.
19th/20thC British School.
Inn scene with stage coach, horses and figures, oil on canvas, 69.5cm x 90cm.

296.
19thC/20thC British School.
Old lady in rural landscape, oil on canvas laid on board, 23.5cm x 19cm.

297.
Toon Verplak (1901-1966).
Country lane with cottages, oil on canvas, signed, 59cm x 78cm.
£200-300

298.
19thC School.
Figures in a cobbled street, overpainted photographic print, 27cm x 19.5cm.

299.
Samuel John Lamorna Birch (1869-1955).
Kingfisher, watercolour, signed, 30cm x 21cm.
£200-300



- ▲ 300.
Dina Nath Walli (1908-2006).
River Jehlum from the Bund, watercolour, signed, 25.5cm x 36cm.
Artist label verso.
£200-300

301.
Iain Macnab (1890-1967).
Market scene, artist signed etching, 30.5cm x 39.5cm.
£50-100

302.
Susan Beanlah (20thC).
Packing up the nets, watercolour, signed and titled verso, 36cm x 55cm.

303.
Henry Ryland (1856-1924).
Country river scene with church, oil on board, signed, 45cm x 25cm.
£100-£200



- ▲ 304.
Constance Helen Greaves (1882-1966).
Old Nog, watercolour, signed and titled verso, 26cm x 21cm.

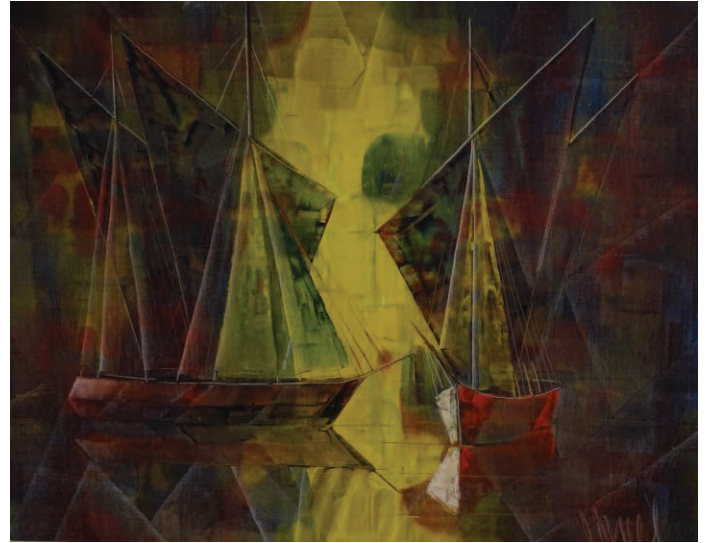
306.
Anders Montan (1845-1917).
Old lady in cottage interior, oil on canvas, signed and dated 1912, 56.5cm x 66cm.
£500-800



- ▲ 307.
Jorge Aguilar-Agon (b.1936).
Sandy Banks, oil on canvas, signed and titled verso, 59cm x 74.5cm.
£200-300

308.
Jorge Aguilar-Agon (b.1936).
Fishing boats, oil on canvas, signed, 44cm x 105.5cm.
£200-300

309.
A.E. Fletcham (19thC/20thC).
Landscape, watercolour, signed, 19cm x 24cm.
£30-50



- ▲ 305.
Marcel Mouly (1918-2008).
Sailing boats, oil on canvas, signed, 49cm x 59cm.
£1500-2500

310.
Ena Limebeek (1898-1984).
The Monastery of the Snows, watercolour, titled verso, 22cm x 27cm, and another labelled verso Federation of British Artists Gallery, The Mall Galleries (2).



- ▲ 311.
Helmut Stadelhofer (1914-1979).
Bacarian lake, oil on canvas, signed, 49cm x 58.5cm.
£300-400

312.
Elimia Alonso (20thC).
Park scene, oil on canvas, signed and dated 1958, 65cm x 92cm.
£200-300

313.
John ?.
Coastal scene, fishing harbour, oil on canvas, signed and dated 1872cm x 92cm.
£200-300

314.
Therese Marie-Hegg de Landerset (1829-1911).
Floral still life, watercolour, signed, 61cm x 45cm.

315.
Hubert Suttler (1817-1904).
Lake scenes - calm and stormy, oil on board - pair, signed E. Grossen, 22.5cm x 31cm.
£500-700

316.
Georges Laporte (1926-2000).
Port de Villefranche quai courbet, oil on board, signed and titled verso, 31cm x 21cm.
£800-1200

317.
Ronald Crampton (1905-1985).
Sail barge - Passing Orford Quay, oil on canvas, signed and titled verso, 49cm x 55cm.

318.
Charles 'Snaffles' Johnson Payne (1884-1967).
The finest view in Europe, artist signed, coloured print, 47.5cm x 75cm.
£20-40

319.
Reuben Ward Binks (1880-1950).
Black Labrador, field trial champion, Hinwood Chance, watercolour, signed and dated 1936, 25cm x 24cm.

Lincoln Fine Art Sale



- ▲ **320.**
L.D.L.
Mike, head of black Labrador,
pastel, signed and dated 1939,
26cm x 34cm.

- 321.**
Bethil.
Dacred Jet, pastel on paper,
signed, 23cm x 28cm.
£20-40

- 322.**
**Ita Phobie Rennie (Early
20thC Scottish).**
Black Labrador, watercolour and
pastel, signed, 41cm x 35cm.
£50-70



- ▲ **323.**
John Beer (1883-1915).
The Water Jump, The
Lancashire Handicap
Steeplechase, Manchester 1910,
further inscribed Springbok,
Odor, The Duffrey, Bushido
and Viz, pencil, watercolour
and body colour, 25cm x 35cm.
£50-80

- 324.**
David Waller (b.1945).
Mare and foal in landscape, oil on
canvas, signed, 51cm x 62cm.
£40-60

- 325.**
David Waller (b.1945).
Seated hound on a chair, oil on
board, 29cm x 40cm.
£20-40

- 326.**
Farcher.
Cockerel and chickens, oil on
board, 19cm x 24cm.

- 327.**
Peter Robinson (20thC).
Swift, watercolour, signed,
22cm x 17cm.



- ▲ **328.**
**Henry Wilkinson
(1921-2011).**
Etching of a Labrador and a
hare, signed in pencil and
numbered 65/45, 22cm x 29cm.
£30-50

- 329.**
Peter Biegel (1913-1987).
Saddling stalls at Newbury,
watercolour, signed, 28cm x 22cm,
label verso from the Tryon Gallery
Limited.
£300-500

- 330.**
**A collection of late 19thC and
later copper printing plates,**
mainly relating to buildings and
scenes around York, to include
Treasurers House, Lendal,
Walmgate bar, Howsham Hall,
York Minster, etc. (25).

- 331.**
Cedric Hodgson (20thC).
Wayside Inn, Windy Winter, The
Bridge, Evening, Shrimpers, artist
signed etchings, various sizes (6).

- 332.**
Joseph Severn (1793-1879).
Portrait of Joseph Severn,
21cm x 16cm.
Joseph Severn was an English
portrait and subject painter, he
was a controversial friend of the
poet John Keats. A version of this
picture is hung in the National
Portrait Gallery. Sold with a
printed portrait of Thomas Henry
Severn, the son of Joseph and a
mid 19thC portrait of John Storr, a
book relating to Joseph Severn
and John Keats Memorial Volume,
issued by The Keats House
Committee, Hampstead,
published 1921, with references to
Joseph and James Severn.
£100-150

- 333.**
Doris Hooper.
Landscape with blue sky, oil on
canvas, signed, 30cm x 40cm.

- 334.**
19thC School.
Loch scene, oil on board,
indistinct monogram,
14.5cm x 25.5cm.

- 335.**
**Alfred G. Buckingham
(1879-1956).**
Sunshine and Thaw, gelatin silver
print, signed and titled verso,
30cm x 22cm.
Label verso Japan British Ex 1910.
£300-500



- ▲ **336.**
Simon Buttery.
The Old Book Shop, multi
media, signed and dated
(20)14, 60cm x 44.5cm.

- 337.**
Simon Buttery.
Coffee Tavern, multi media,
signed and dated (20)14,
44.4cm x 59.5cm.



- ▲ **338.**
Doug Hyde (b.1972).
Bear Hug, artist signed print,
28cm x 37cm, including book
Head and Soul inscribed by
the Artist (2).
£100-200

- 339.**
Norman Wade (20thC).
Durham Cathedral, coloured
lithographic print, artist signed,
titled, dated (19)72 and number
76.100, 35cm x 57cm.

- 340.**
W.S. Taylor (1920-2010).
Girls Head 14/50, artist signed
etching, 23cm x 14.5cm, and four
other etchings (5).



- ▲ **341.**
Tracy Savage (20thC).
Whalers Tower, acrylic on
board, signed and dated
(20)07, 53cm x 25cm, artist label
verso.

- 342.**
**John Knapp Fisher
(1931-2015).**
North West Pembrokeshire
134/500, artist signed coloured
print, 25cm x 76.5cm, artist label
verso.

- 343.**
Simon Bull (b.1958).
Ullswater - Autumn Morning,
Autumn Mist Loghagg Tam, two
artist signed coloured prints,
32cm x 43cm (2).

- 344.**
A. Tew (20thC).
Don Giovanni, oil on board,
signed, 48cm x 39cm.

- 345.**
A. Tew (20thC).
Horses and carriage in market
square, oil on board, signed,
39cm x 49cm.

- 346.**
Mthetheleli Malambile.
N'Dbele Woman, acrylic on
board, signed and titled verso,
35cm x 29cm.



▲ 347.
Mthetheleli Malambile.
N'Dbele house, oil on board,
signed and titled verso,
34.5cm x 29cm.

348.
M.M. (20thC).
Figures on the beach, oil on board,
initialled, 56cm x 71cm.

349.
Abushaniaa.
Portrait, oil on canvas, signed,
18cm x 17cm, and another pair (3).

350.
John Ryan.
Donkey, oil on board, signed and
titled verso, 29.5cm x 19cm, and
another The Farrier (2).

351.
M. Lott.
Kneeling woman with birds, oil
on canvas, signed, 90cm x 120cm.
£100-150

352.
Tracy Savage (20thC).
Old Town, acrylic on board,
signed, 91cm x 91cm.

352A.
Tracy Savage (20thC).
Huts, artist limited edition print,
91cm x 53cm, with certificate of
authenticity.

353.
F. McClain.
Elements, multi media, signed
and titled, 40cm x 40cm.

354.
Rowland Fade (1939-2017).
Abstract composition, multi-
media, signed, 60cm x 90cm.

355.
Kathleen Crow.
Winter, acrylic on board, signed
and titled verso, 76cm x 76cm.

356.
Kathleen Crow.
Spring, acrylic on board, signed
and titled verso, 76cm x 76cm.

357.
Sarah Hutton.
Farm on the Moors, oil on paper,
signed and titled verso,
57cm x 38cm.

358.
20thC School.
Racing horses with jockey,
watercolour, indistinctly signed,
55cm x 73cm.

359.
Adian Dawnag.
Tribute to Edward Lear, oil on
board, signed and titled verso,
109cm x 78cm.
Label verso The Chelsea Art Society.

360.
Adian Dawnag.
Feeding Pelicans, oil on board,
signed and dated 1991,
45cm x 101cm.

361.
Rozanne Bell (b.1962).
Bird black, watercolour, signed,
75cm x 54cm
*With artist signed certificate of
authenticity.*
£70-100

362.
Rozanne Bell (b.1962).
Bird White, watercolour, signed,
75cm x 54cm
*With artist signed certificate of
authenticity.*
£70-100

363.
Rozanne Bell (b.1962).
Eagle, watercolour, signed,
54cm x 73cm
*With artist signed certificate of
authenticity.*
£70-100

364.
Rozanne Bell (b.1962).
Head and shoulders study -
gentleman wearing a hat,
watercolour, signed, 62cm x 47cm
*With artist signed certificate of
authenticity.*
£70-100

365.
Mario Vannetti.
Floral still life, oil on canvas,
signed, 98cm x 68cm.

366.
Sautiua.
Homage to Bacchus, oil on board,
signed and titled verso,
25cm x 32cm, and two others (3).

367.
Edith Woods.
Landscape, oil, signed,
38cm x 60cm, and another signed
D.E. Winsea (2).

368.
W.S. Taylor (1920-2010).
Staffordshire dogs, pastel,
38cm x 27cm, and a pair of pottery
Staffordshire dogs (3).

369.
20thC British School.
Nude study, inscribed For
Gabrielle dated 4/6/74,
39cm x 40cm.

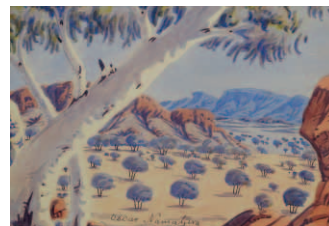
370.
S.B. (20thC).
Jersey cows, Woodberry, oil on
board, initialled, 16.5cm x 16.5cm.

371.
C.J. Thornton.
Old Cottage, Scremby, Lincs,
watercolour, signed and titled,
26cm x 17cm, and another
Handgate at Markby.

372.
T.H. McVos(?) (20thC).
Continental market square, pastel,
signed and dated 1951,
49cm x 30.5cm.

373.
Sarah Bowman (20thC).
Kingfishers, watercolour,
initialled, 25cm x 18.5cm, and two
others (3).

374.
J.A. Drinkwater.
Lamport and Holts Memling at
anchor. R. Mersey, watercolour,
signed and titled verso,
19cm x 32cm, and two others.



▲ 375.
**Oscar Namatjira
(1922-1991).**
Landscape, watercolour,
signed, 25cm x 35cm.

376.
**David Muirhead Bone
(1876-1953).**
Evora Portugal, watercolour,
titled verso, 20.5cm x 13cm, label
verso Mercury Gallery, London
and two other pictures, one
signed E Vulliamy (3).

377.
**Roger de la Corbiere
(1893-1974).**
Plougrescant, Moonlight, oil on
canvas - Pari, signed and titled
verso, 59.5cm x 90cm.
£50-80

378.
Lin Litchfield.
The Oriental Carpet Shop,
watercolour, signed and dated
1970, titled verso, 25cm x 35cm,
and another Trenton (2).
£30-50

379.
Mary Ardin.
Landscape, watercolour, signed,
and four others (5).

380.
J.C. Vamosgne.
Dutch woman, watercolour,
signed, dated 1906 and titled
verso, 28cm x 18cm, and another
Moselle (2).
£30-50

381.
Adrian Dawndy.
Opium Poppy, watercolour,
signed, titled and dated 1990,
59cm x 41cm, and two others.

382.
**The Gilly Wilson Paper
Textile Co Ltd.**
Winter Staw Yukka, multi-media,
signed, titled and dated March
(19)85, 76cm x 62cm, and two
others (3).

383.
20thC School.
Abstract, gouache, indistinctly
signed verso, 48cm x 32cm, and
another signed Barry Driscoll (2).

Lincoln Fine Art Sale



- ▲ 384.
Barry Atkinson (1943-2019).
Garden scene, watercolour,
signed and dated May (19)74,
53cm x 40cm.

385.
Barry Atkinson (1943-2019).
The Workshop No. 2, oil on board,
signed and titled verso,
60cm x 48.5cm.

386.
Barry Atkinson (1943-2019).
Market scene, watercolour, signed
and dated (19)84, 48cm x 36.5cm.

387.
Barry Atkinson (1943-2019).
Studio works (approx 41).

388.
Barry Atkinson (1943-2019).
Studio works (approx 15).

389.
Barry Atkinson (1943-2019).
Studio works (approx 23).

390.
Barry Atkinson (1943-2019).
Studio works (approx 24).

391.
20thC School.
Abstract multi media,
58cm x 43cm.

392.
Barry Atkinson (1943-2019).
Studio works (approx 11).



- ▲ 393.
Walter Cockcroft.
Newstead Abbey from East,
watercolour, signed, titled and
dated October 1983,
29cm x 42cm.
*Label verso City of Nottingham
Castle Museum - Local Artists
Exhibition.*

394.
Walter Cockcroft.
Millgate - Newart-on-Trent, pencil
drawing, signed, titled and dated
November 1982, 28cm x 41cm.
*Label verso City of Nottingham
Castle Museum - Local Artists
Exhibition.*

395.
Walter Cockcroft.
Old Dodd Keswick, Pastel.crayon,
signed, titled and dated June 1983,
44cm x 29cm.
*Label verso City of Nottingham
Castle Museum - Local Artists
Exhibition.*

396.
Konstantin Kuzema (20thC).
Raskolnikor's Way, watercolour,
signed, 33.5cm x 39cm, and
another bridge scene. (2)

397.
Candido Ballester (b1926).
Lady with cat, mutli media,
signed, 40cm x 28.5cm, and a
signed print Jackie Jones.

398.
Sheila Holland (1932-2012).
Art works - composition statues,
illustration for guide only.
*Note items are in storage within
Central Lincoln: viewing by
appointment only.*

Further lots and
updates
available online.

Notes

Artist index

NAME: LOT NUMBER

A		F		O	
Abushaniaa	349	Farrer, H	107	O'Rorke, M	294
Adamson, C.L.	271	Feisinal, E	246		
Agnew	66	Fisher, J.K.	342		
Aguilar-Agon, J	307, 308	Fletcham, A.E.	309		
Alonso, E	312			P	
Ardin, M	379			Park, S	253
Armfield, G	77, 81	G		Paton, D	150
Arnold, G	256, 257	Geertz, J	51	Payne, C. J.	318
Ashforth, J	151	Geoffroy, J. J. H.	1	Plachte, E	230
Atkinson, B	384-392	Gersham-Bomberg, D	232, 233	Powell, A	16
Austin, R.S.	9	Giampietri, S	97		
		Gowdy, W	20	R	
		Greaves, C.H.	304	Ranft, R	242
B				Rennie, I. P.	322
S.B.	370	H		Renshaw, J	98
Ballester, C	397	Haddelsey, V	152	Richardson, T.M	14
Bartl, A	153, 154	Hague, J.E.H.	282	Robinson, P	327
Beanlah, S	302	Hallewell, E.G.	278	Rollett, H	136-139
Beer, J	323	Hamblin, E.C.	108	Rooke, L	6, 131-135
Bell, D.C.	265	Herle, R	247	Rosse, R.H.A.	273
Bell, R	361-364	Hersey, E	7, 252	Rousse, F	15
Bera(?), J	287	Hillier-Parker, H.D.	95	Ryan, J	350
Bethil	321	Hines, F	114	Ryland, H	303
Biegel, P	329	Hodgson, C	331		
Binks, R.W.	319	Hodgson, G	103	S	
Birch, S.J.	299	Holland, S	398	K.S.	270
Blanchard, A	249	Hooper, D	333	Sautiua	366
Bone, D.M.	376	Hutton, S	357	Savage, T	341, 352, 352A
Bowers, S.J.	112	Hyde, D	338	Schath, A	53
Bowman, S	373			Schelfman, J	291
Brannan, E.E.	202-223	J		Severn, J	332
Brannan, N.R.	166-201	Jośza, E	281	Shayer, W	12
Brannan, P	224-227			Smeers, F	272
Bridgeman, C.	116	K		Smith, B	80
Brown, L	85	Kendrick, A	109	Stadelhofer, H	311
Browning, C.A.	251	Koekkoek, H	101	Steer, P.W.	110
Buckingham, A.G.	335	Kolosziary ?	50	Stephens, H.E.	255
Bull, S	343	Kuzema, K	396	Storey, T.G.	146
Buttery, S	336, 337			Suttler, H	315
		L			
C		L.D.L.	320	T	
Cadiz, F	274, 275	Ladbrooke, J.B.	141	S.T.	104
Cadwallader, W	277	Laporte, G	316	Taylor, W.S.	340, 368
Cardon, C	21	Leighton, F	266, 267	Tew, A	344, 345
Carr, C	143, 144	Lewis, J.F.	120	Thomas, W.B.	140
Carter, G	244	Limebeek, E	285, 286, 310	Thornton, C.J.	371
Chadin, E	88	Linnell, J	115	Tropham, W.T.	280
Cockcroft, W	393-395	Liscard, E	289	Turner, P	254
Coleman, S	243	Litchfield, L	378	Tyson, K	163
Colis, T	290	Lockhart, J.H.B.	268		
Connard, P	119	Logsdaill, W	2	V	
Cook, E.W.	99	Lott, M	351	Vamosgne, J.C.	380
Cooper, C.C.	96	Lowry, L.S.	3, 235-237	Vannetti, M	365
Cooper, T. G.	18, 19	Ludlam, A	158-162	Vernon, E	111
Cooper, T.S.	60	Lumsden, E	124	Verplak, T	297
Cooper, W.H.	94			Vyse, C	10
Cooper, W.S.	5	M			
Crampton, R	317	F.M.	65	W	
Crow, K	355, 356	M.M.	348	J.B.W.	283
		McClain, F	353	Wade, N	339
D		McVos, T.H.	372	Walli, D.N.	300
Davies, E	113	Macnab, I	301	Waller, D	324, 325
Dawndy, A	381	Madgwick, C	250	Walter, H	54
Dawnag, A	359, 360	Magretti, E	288	Webster, A.G.	152A
Day, D	83	Malambile, M	346, 347	Wells, F	82
De la Corbiere, R	377	Martinado, P	284	Weston, D	164
De Landerset, T. M-H.	314	Mathias, V	106	Wheeldon, R	155-157
Dobdinson, A.E.	149	Melville, H.S	79	Whitlock, P	258-264
Dorbin, K	269	Millner, W.E.	105	Wilkinson, H	328
Drinkwater, J.A.	374	Montan, A	306	Williams, K	234
		Moore, G	78	Wood, K	145
E		Moore, H	240	Woods, E	367
Ellis, V	248	Mouly, M	305	Wyksham	292
Emsley, W	13				
		N		Z	
F		Namatjira, O	375	Zinkeisen, A.K.	165
Fade, R	354	Neilson, A.P.	276		
Falzoni, G	245	Nicholson, B.L.	231		
Farcher	326	Norfolk, W	100		

As at the time of printing, lots without estimates are to be sold without reserve, auctioneer's discretion.

See online catalogue for updates.

The Bourne Auction Rooms

Spalding Road, Bourne,
Lincolnshire PE10 9LE

E: bourne@goldingyoung.com

T: +44 (0) 1778 422686

F: +44 (0) 1778 425726

The Grantham Auction Rooms

Old Wharf Road, Grantham,
Lincolnshire NG31 7AA

E: grantham@goldingyoung.com

T: +44 (0) 1476 565118

F: +44 (0) 1476 561475

The Lincoln Auction Rooms

Thos Mawer House, Station Road
North Hykeham, Lincoln LN6 3QY

E: lincoln@goldingyoung.com

T: +44 (0) 1522 524984

F: +44 (0) 1522 681804

The Leicester & Midlands Office

E: leicester@goldingyoung.com

T: +44 (0) 116 473 5735

London & South Valuations

E: london@goldingyoung.com

T: +44 (0) 203 301 1007

The Louth & Wolds Office

E: louth@goldingyoung.com

T: +44 (0) 1507 661864

The Stamford & Rutland Office

E: stamford@goldingyoung.com

T: +44 (0) 1780 7516